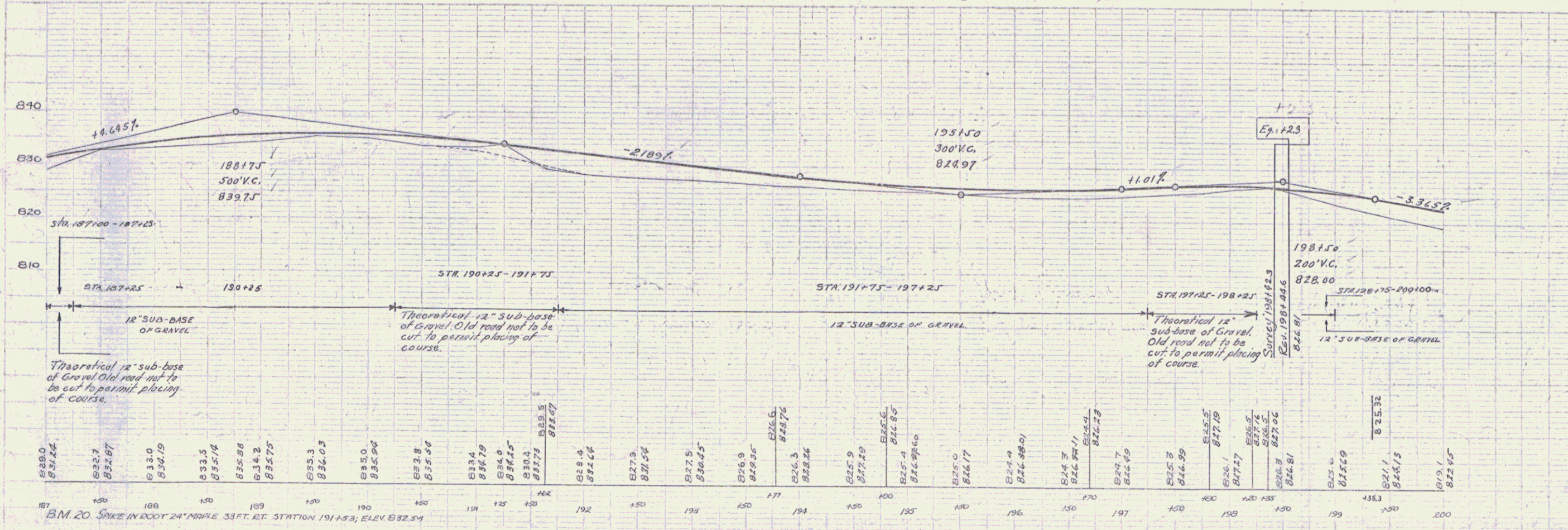
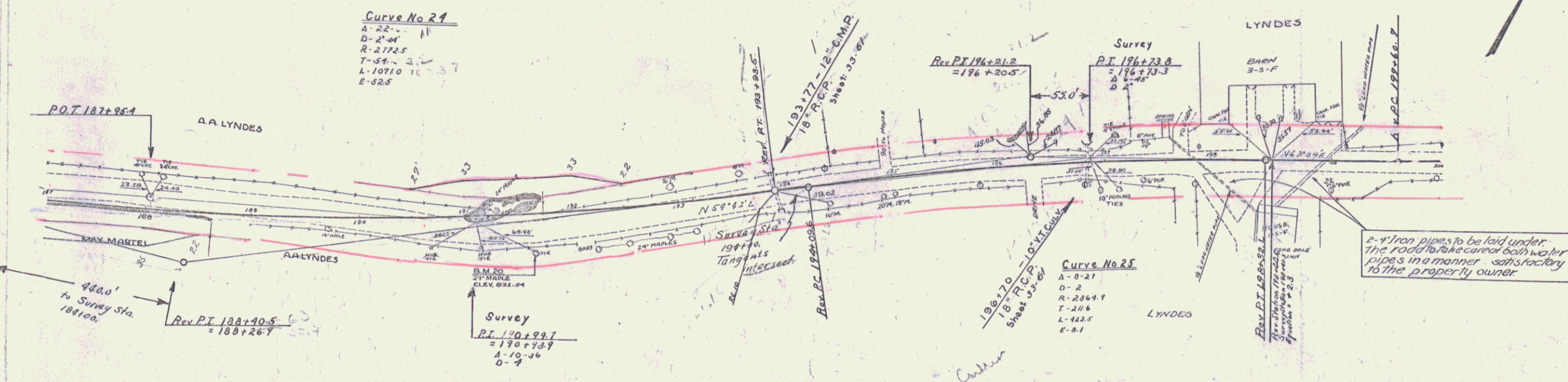


WOOD GUARD RAIL REQUIRED				CABLE GUARD RAIL REQUIRED				REINF. CONC. PIPE CULVERT REQUIRED					
STA	STA	LEFT	RIGHT	STA	STA	LEN	CONSTANT	PAR LENGTH	STA	DIA	LENG	CONCA	CONC. STEEL
193+65	193+89	24'	24'	192+80	193+52	2	112'	40'	193+77	18"	36'	1.8 ct.	54*
194+58	194+82	24'	24'					152'	196+70	18"	36'	1.8 ct.	54*

1930  
 3 97-D 1930 17 30

PUTNAM CHANCE 8-4-30



B.M. 20 SPIKE IN ROOT 24\"/>

SERIES F NO. 97-D  
 SHEET 17 OF 22