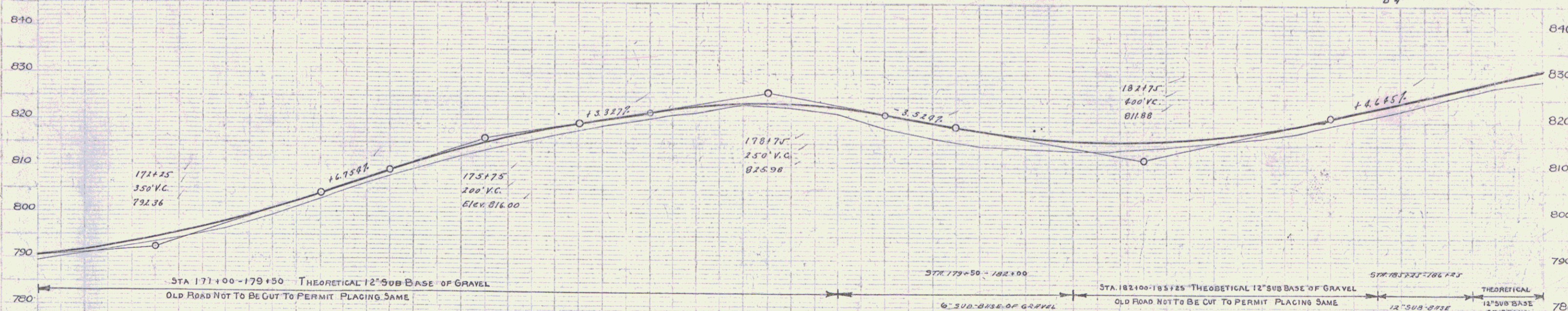
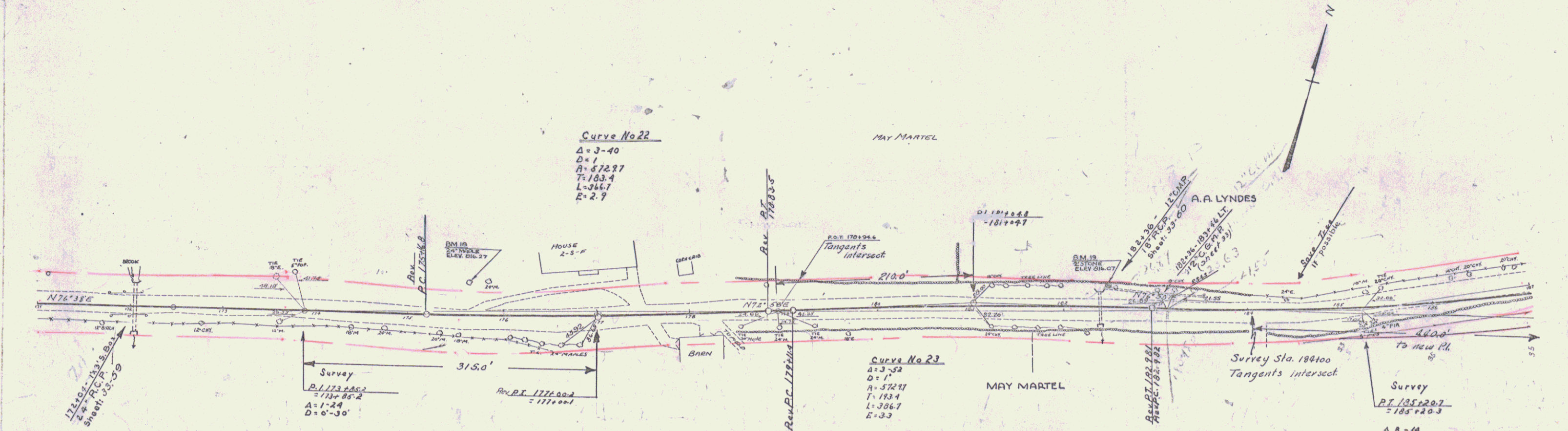


WOOD GUARD RAIL REQUIRED				CABLE GUARD RAIL REQUIRED				REINF. CONC. PIPE CULVERT REQUIRED				RELAYING PIPE CULVERTS				
CULV. STA.	LEFT	RIGHT		STA	STA	Lo-R	LENGTH CONSTANT	STA	DIA.	LENG.	CONG. CONC.	STEEL	STA	STA	CG.M.P. LENGTH	REINFORCING
182+36	24'	24'		171+0	173+30	Q	230' 20' 250'	172+04	24"	56'	2.4-cy	54#	182+36	183+46.6	120'	1.2-cy
				171+77	172+25	L	48' 40' 88'	182+36	18"	36"	1-8-cy	84#				

97-D 1930 16 39



STA	ELEV.	STA	ELEV.	STA	ELEV.	STA	ELEV.	STA	ELEV.	STA	ELEV.	STA	ELEV.	STA	ELEV.
171	799.4	172	796.8	173	793.5	174	790.2	175	786.9	176	783.6	177	780.3	178	777.0
178	816.0	179	812.7	180	809.4	181	806.1	182	802.8	183	799.5	184	796.2	185	792.9
186	811.88	187	808.58	188	805.28	189	801.98	190	798.68	191	795.38	192	792.08	193	788.78
194	785.48	195	782.18	196	778.88	197	775.58	198	772.28	199	768.98	200	765.68	201	762.38

B.M. # 18 Spike in root of Maple 32' Lt. 175+61 Elev. 816.27  
 B.M. # 19 U.S.I.B.M. Top 2' Stone at 12° Lim 27' Lt. 182+44 Elev. 816.07

SERIES NO. 370 SHEET 16 OF 39