

**WOOD GUARD RAIL REQUIRED**

CULV. STA.	LEFT	RIGHT
164+44	24	24
167+60	24	24

**WOOD GUIDE POSTS REQUIRED**

STATION	LEFT	RIGHT
164+44	1	1

**CABLE GUARD RAIL REQUIRED**

STA	STA	Lx D	LENGTH	CONSTANT	PIV. LENGTH
159+0	159+56	R	56'	20'	76'
162+26	163+70	R	44'	20'	64'
165+25	166+77	R	52'	20'	72'
167+15	168+91	R	76'	20'	96'

578  
16  
738

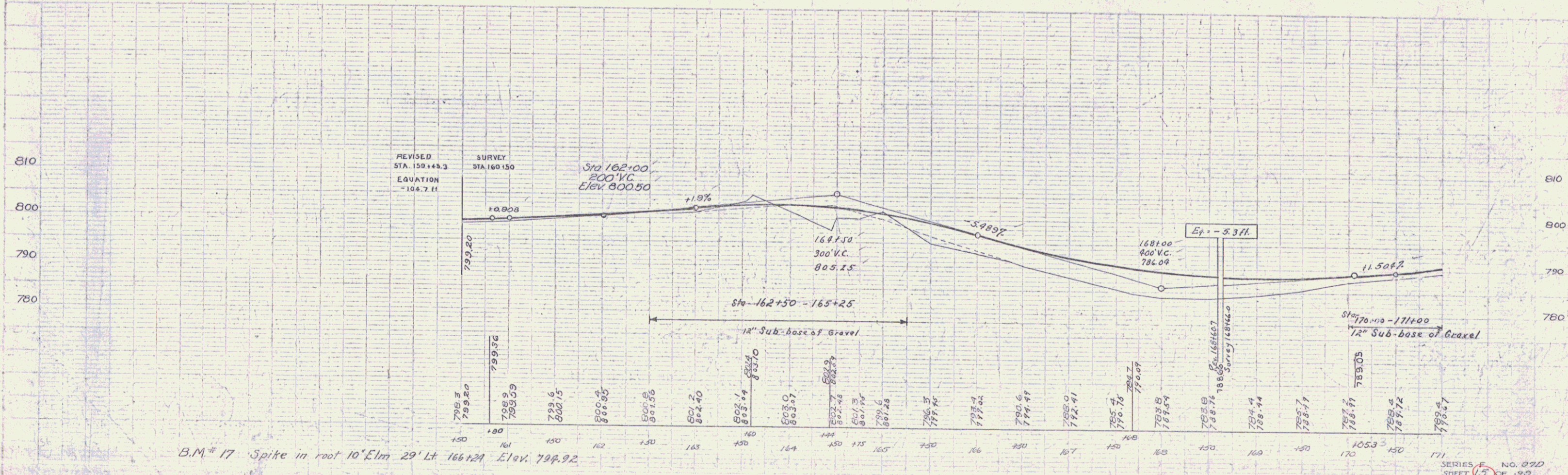
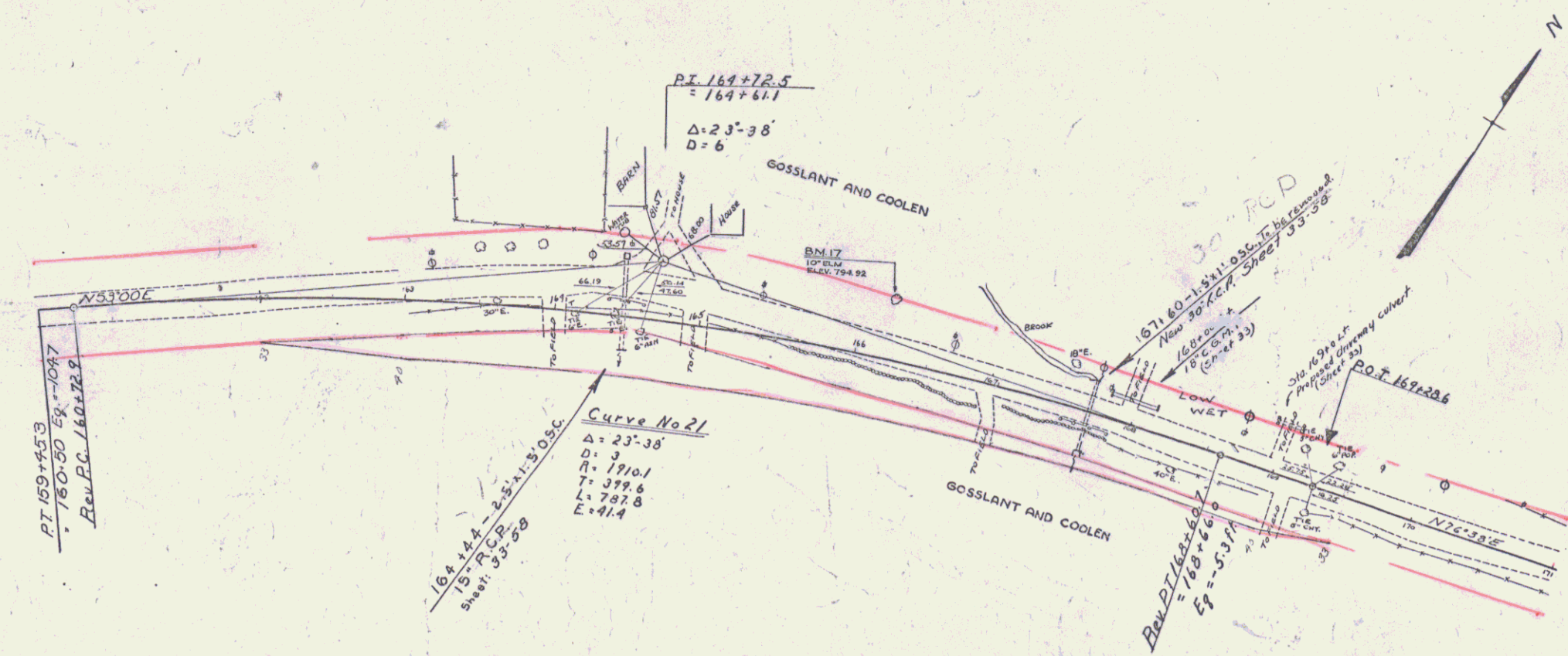
**REINF. CONG. PIPE CULVERT REQUIRED**

STA	DIA.	LENG.	CONC.	CONG.C. STEEL
164+44	15"	68'	1.5x	1.5x
167+60	30"	48'	3x	5x

**C.G.M. PIPE REQUIRED**

Sta.	Dia.	Leq.	Con. Rub. Mas.
168+00 Lt 18"	28"	33	3.3
169+00 Lt 12"	24"	23	2.3

ED. ROAD	STATE	FED. AID	TOTAL SHEET
9	VT	97-D	1930 15 30



B.M. # 17 Spike in root 10' Elm 29' Lt 166+24 Elev. 799.92

SERIES NO. 370  
SHEET 15 OF 30