

WOOD GUARD RAIL REQUIRED

CUK STA.	LEFT	RIGHT
148+20	24'	—
154+31	24'	—
156+41	24'	—
158+88	24'	—

CABLE GUARD RAIL REQUIRED

STA	STA	L+Q	LENGTH	CONSTANT	FRY LENGTH
147+25	149+25	R	200'	40'	240'
156+0	156+56	R	236'	40'	296'
158+60	159+0	R	40'	20'	60'

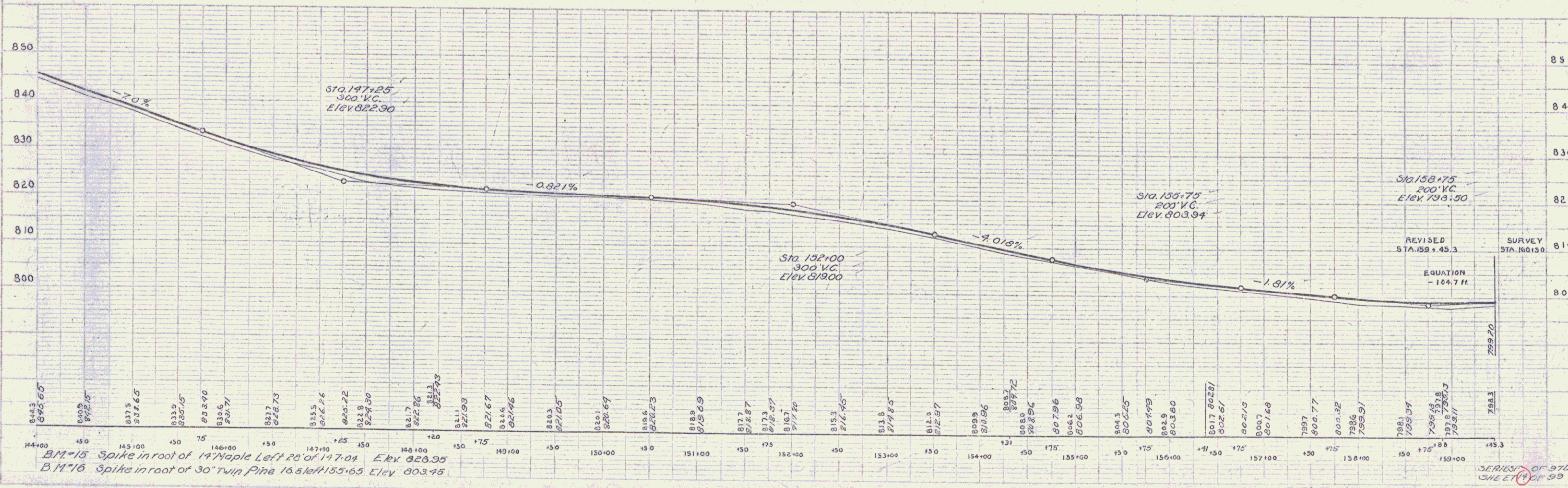
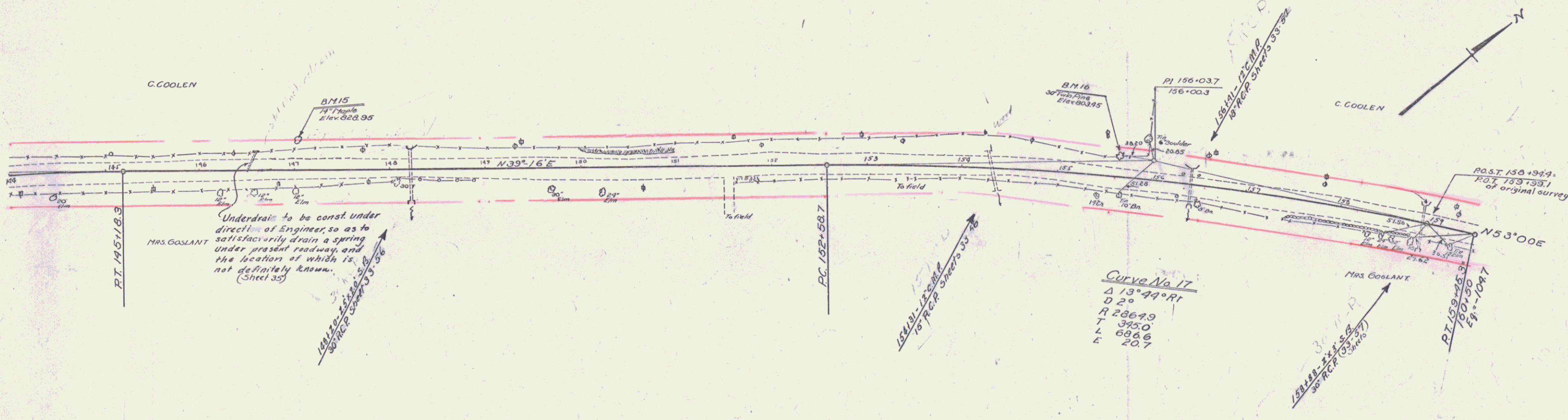
New Reinforced Concrete Pipe Culverts Required

Station	Length	Diam.	Class A	Class C	Steel
148+20	58'	30"	32 cy	58"	—
154+31	48'	15"	19 cy	15 cy	58"
156+41	40'	18"	18 cy	—	54"
158+88	44'	30"	32 cy	—	58"

STD UNDERDRAIN WITH P.C.M.P. (Covered)

Stations	Diam.	Length	Con. Rub. Mas.
146+302	6"	20'	1.2 cy.

FD-302 (REV. 1-25-60) FEDERAL BUREAU OF SURVEYING
 97-D 1930 14 99



BM-15 Spike in root of 14" Maple Left 20' of 147+04 Elev. 826.35
 B.M. 16 Spike in root of 30" Twin Pine 16.5 ft. W 155+65 Elev. 803.45

SERIES OF 970 SHEET 14 OF 99