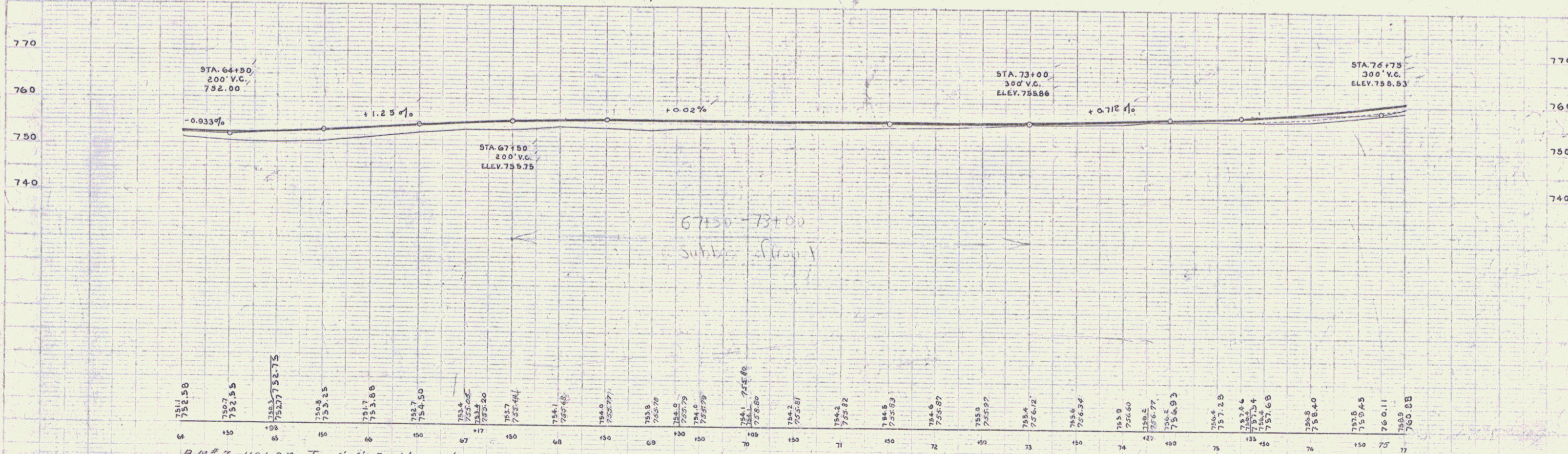
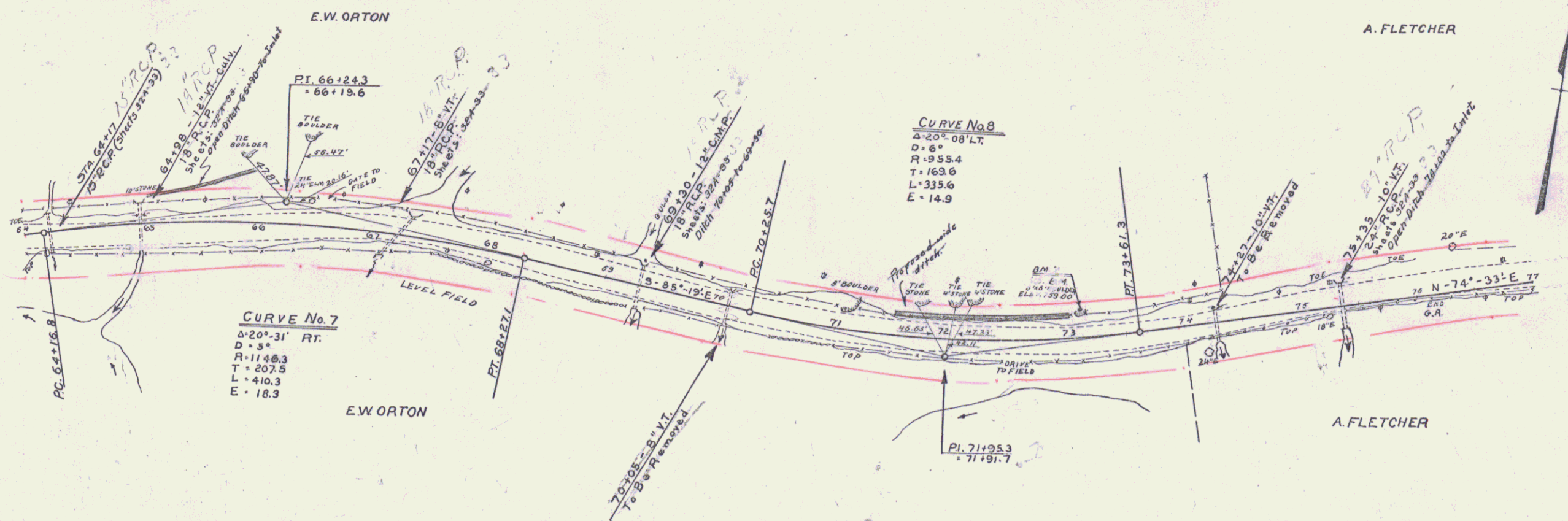


WOOD GUARD RAIL REQUIRED		
CUKUL STA.	LEFT	RIGHT
64+17	24'	24'
64+98	24'	24'
67+17	24'	24'
69+30	24'	24'
75+35	24'	1'

CABLE GUARD RAIL REQUIRED					
STA.	STA.	Len	CONSTANT	FR.	ENCL.
71+50	71+0	50'	60'	610'	

REINF. CONC. PIPE CULV. REQUIRED					
Sta.	Dia.	Len.	Cons.	Cons.	Steel
64+17	18"	40'	1.8 cy.		54 #
67+17	18"	36'	1.8 cy.		54 #
69+30	18"	36'	1.8 cy.		54 #
75+35	24"	36'	2.4 cy.		54 #
64+17	15"	32'		3.0 cy.	33 #

20' ROAD WIDTH 14'4" SIDEWALK TOTAL
 197-D 1930 6 89



B.M. # 7 U.S.I.B.M. Top 6'16" Boulder 17' Lt. 73+09 Elev 759.00

6