

WOOD GUANO DAIL REQUIRED

CULV. STA	LEFT	RIGHT
32+22	24'	—
33+37	24'	—
36+39	24'	—
40+80	24'	—
42+22	24'	24'
43+31	24'	24'

CABLE GUANO DAIL REQUIRED

STA - STA	LEN	CONC	CONC	LEN
32109 - 41100	2	836	80'	976'

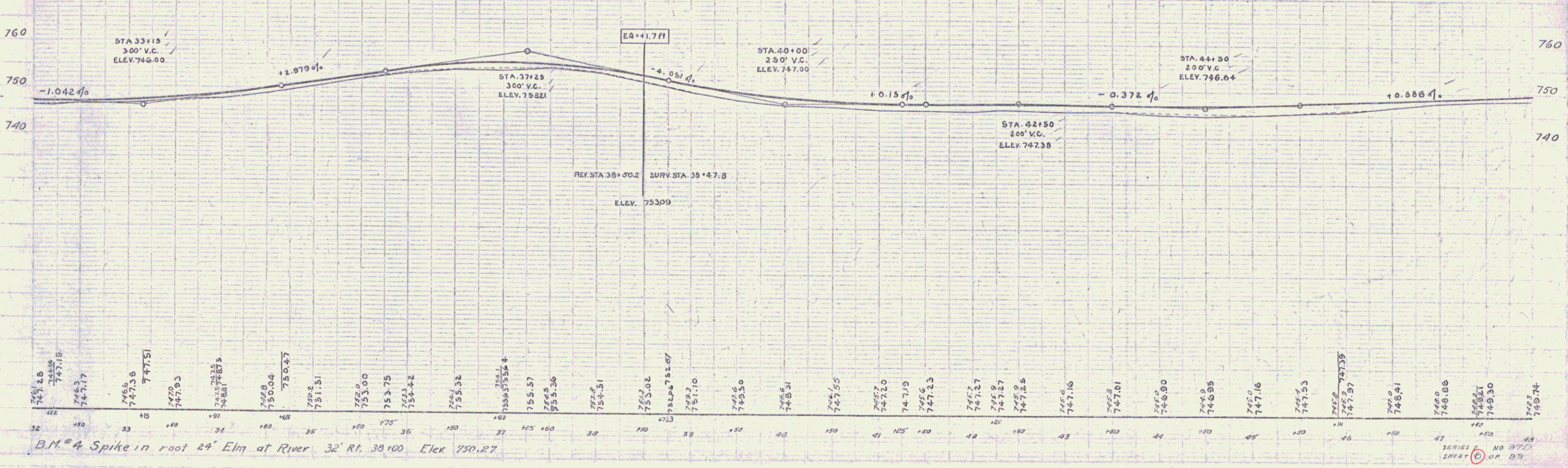
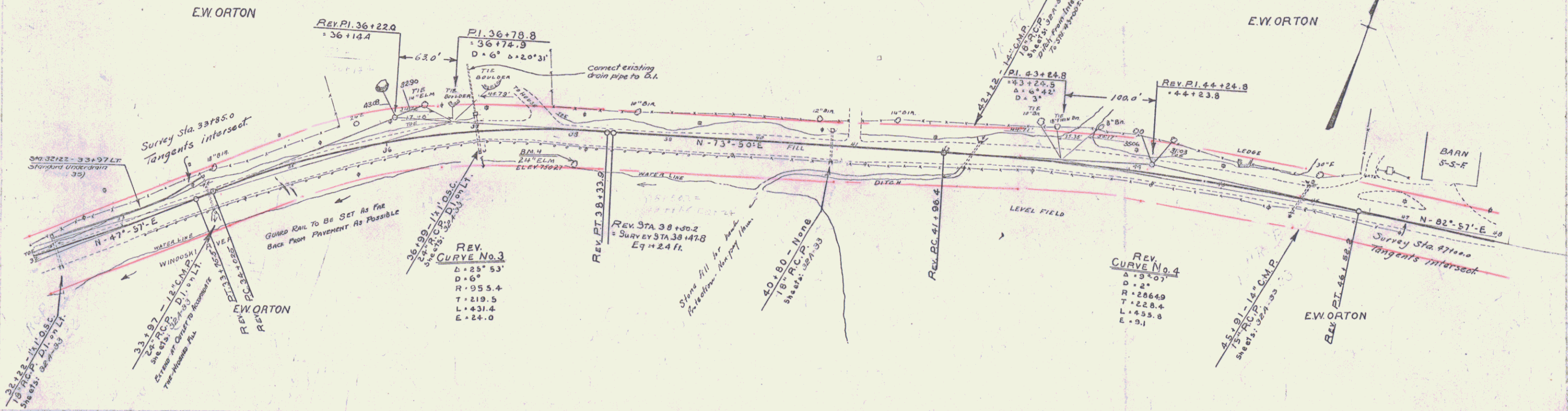
REINF CONC PIPE CULV. REQUIRED

Sta.	Dia.	Len.	Conc. A	Conc. C	Steel
32+22	18"	32'	2.8 c.y.	—	178 #
33+37	24"	40'	1.8 c.y.	—	137 #
36+39	24"	42'	1.8 c.y.	—	157 #
40+80	18"	36'	2.3 c.y.	—	174 #
42+22	18"	33'	1.8 c.y.	—	54 #
43+31	15"	36'	—	3.0 c.y.	33 #

STD UNDERDRAIN WITH P.C.G.M.P. (Entered)

STATIONS	DIA.	LENG.
32+22 - 33+37	6"	176'

DESIGNED BY: [Signature]
 DATE: 1930
 SHEET NO. 99



B.M. # 4 Spike in root 24" Elm at River 32' Rt. 38+100 Elev. 750.27

SERIES NO 377
 SHEET 99