

**WOOD GUARDRAIL REQUIRED**

STA.	LEFT	RIGHT
17+45	26'	26'
22+55	26'	26'
29+33	26'	26'

**CABLE GUARDRAIL REQUIRED**

STA.	STA.	LEN.	CONST.	PROV.
17+50	18+00	R 100'	40'	140'
19+50	21+50	R 200'	40'	240'
26+56	26+80	L 24'	20'	44'
26+56	26+80	L 24'	20'	44'
26+90	27+14	L 24'	20'	44'
26+90	27+14	L 24'	20'	44'

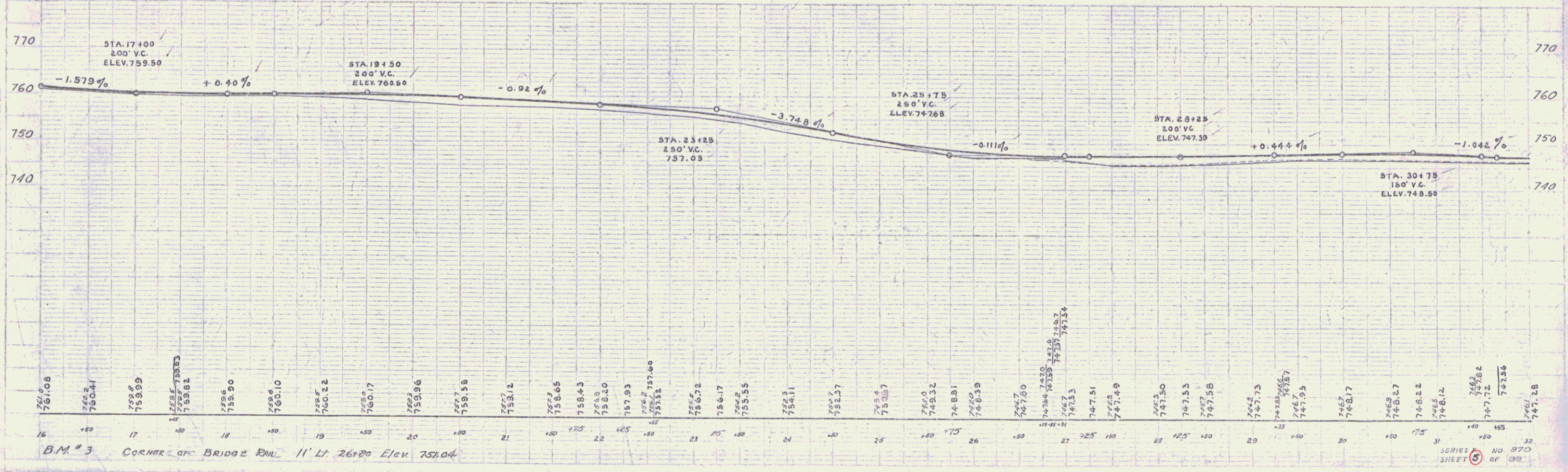
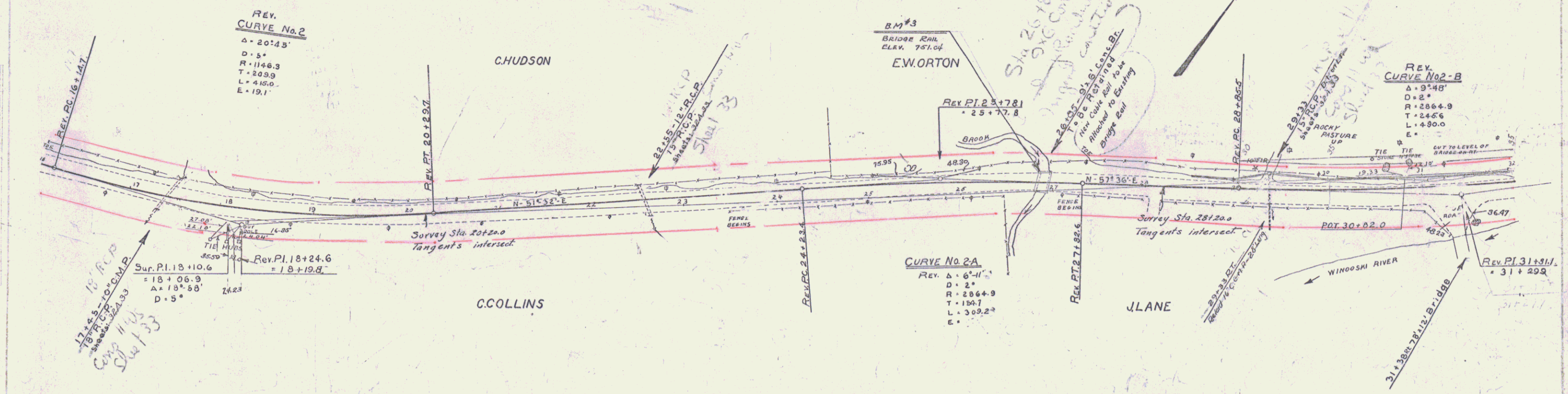
**REIN. CONC. PIPE CULVERT REQUIRED**

STA.	Sta.	Len.	Cone. A	Cons. C	Size
17+45	18'	36'	1.80%		36"
29+33	15'	36"		1.50%	16x36"

**RELAYING PIPE CULVERTS**

STATION	C.P.	LENGTH
29+33.07	16"	28'

37-0 1930 5 99



SERIES NO. 970 SHEET 5 OF 39