

INDEX OF SHEETS

SHEET NO.	DESCRIPTION
1.	Title Page
2.	Typical Cross Section of Improvement
3-4.	Quantity Summary Sheet
5.	Drainage Sheet
6-7.	Location Sheets
8-9.	R.O.W. Detail Sheets
10-14.	Plan & Profile Sheets
15.	Blank
16.	a-61 Solid Rock Excavation
17.	b-1 Bunking Tables
18.	b-5 Typical Slope Grading
19.	b-6 Huck Excavation
20.	b-10 Embankment on a Slope
21.	b-11 Slope Stabilization
22.	b-13 Drive Intersection
23.	c-1 Treated Timber Curb
24.	c-2 Underdrains & Headwalls
25.	d-4 Flushing Basins
26.	d-16 Orca Inlet, Type II
27.	e-1 Barricade, Signs & Lights
28.	e-31 Traffic Signs
29.	e-32 Guard Rail
30.	e-33 Guard Rail
31.	e-1 Marker Posts
32.	e-1 Project & Boundary Markers
33.	Blank
34.	Plan & Elevation
35.	Quantity Sheet
36.	Preliminary Information Sheet
37.	Boring Log
38.	Framing Plan & Typical Section
39.	Annotations No. 1 & No. 2
40-41.	Approach Slabs No. 1 & No. 2
42.	Reinforcing Schedule
43-49.	Channel Sections
50.	50-R1-64 Sheet 1
51.	50-R1-64 Sheet 2
52.	50-01-65
53.	50-06-65 (A)
54.	50-09-65 (A)
55.	50-12-65
56.	50-30-65
57.	Blank
58-59.	Road Section Sheets

STATE OF VERMONT
DEPARTMENT OF HIGHWAYS

PROPOSED IMPROVEMENT

FEDERAL AID PROJECT

TOWNS OF EAST MONTPELIER-PLAINFIELD

COUNTY OF WASHINGTON

U.S. ROUTE 2

MONTPELIER-ST. JOHNSBURY ROAD

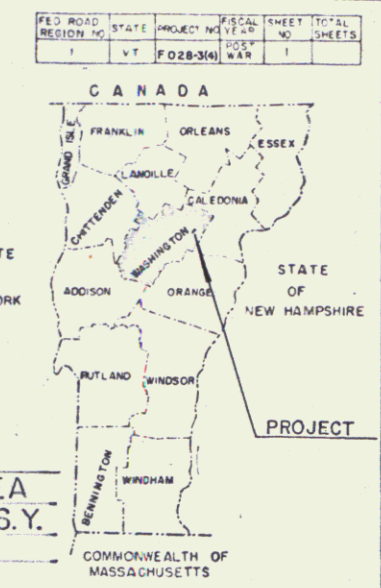
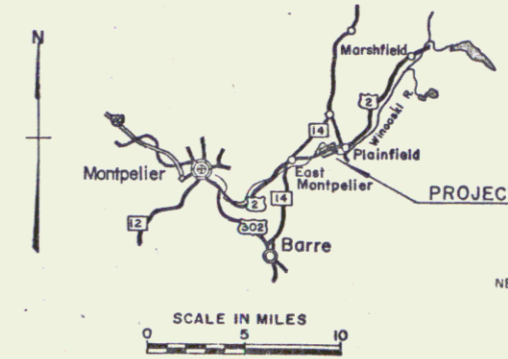
BEGINNING AT A POINT 0.434 MILE WEST OF THE
E. MONTPELIER-PLAINFIELD TOWN LINE AND EXTENDING
EASTERLY 0.777 MILE

LENGTH OF ROADWAY 4,006.94 FEET = 0.759 MILE
LENGTH OF BRIDGE 95.00 FEET = 0.018 MILE

LENGTH OF PROJECT 4,101.94 FEET = 0.777 MILE

DESIGN DATA

	1965	1965
ADT	2440	3980
DHV	360	580
D	60%	60%
T	7%	7%
	50 M.P.H.	

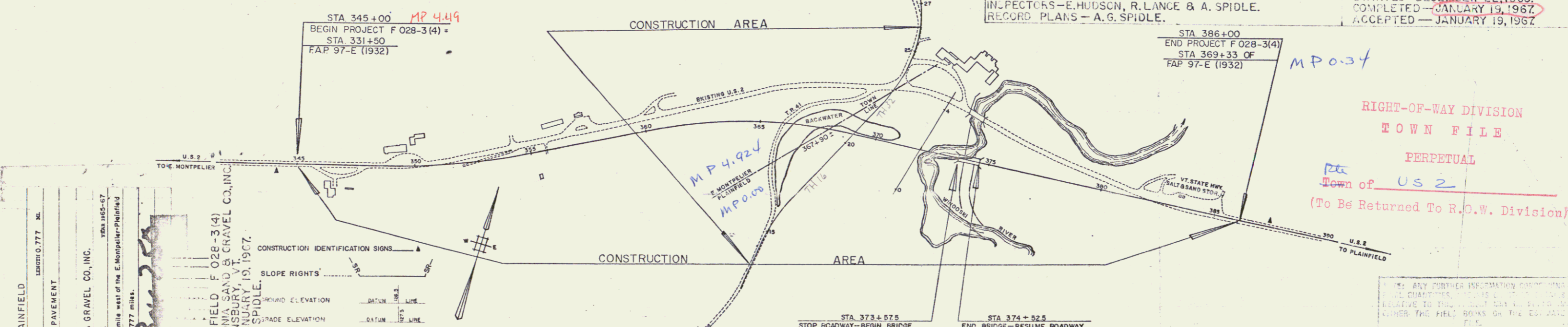


PROJECT NAME & NUMBER TYPE PAVEMENT AREA
E. MONTPELIER-PLAINFIELD F 028-3(4) BIT. CONC. 10,939 S.Y.
RECORD PLANS
MATERIALS

SUBBASE OF GRAVEL, GRAVEL SHOULDERS & GRAVEL BACKFILL—LEPAGE'S GRAVEL PIT—BARRE, VT.
SUBBASE OF SAND & CRUSHED STONE—CALEDONIA SAND & GRAVEL CO., INC.—PLAINFIELD, VT.
BITUMINOUS CONCRETE & STONE GRITS—COOLEY CONSTRUCTION CO., INC.—BARRE, VT.
TAR EMULSION & ASPHALTIC ASPHALT COATING—A.H. HARRIS & SONS—HYDE PARK, MASS.
ASPHALT—MOBIL OIL CO.—E. PROVIDENCE, R.I.
JOINT SEALER—HOT POURED—SERVICISED PRODUCTS CORP.—CHICAGO, ILL.
CONCRETE CLASS A, AA & B—D & D CONCRETE—MONTPELIER, VT.
REINFORCING STEEL—BETHLEHEM STEEL CO.—BETHLEHEM, PA.
STRUCTURAL STEEL & BRIDGE RAILING—VERMONT STRUCTURAL STEEL CORP.—BURLINGTON, VT.
BRIDGE PAINT—FLETCHERS MILFORD PAINT WORKS—MILFORD, N.H.
CAST IRON GRATES & FRAMES—E.L. LEBARON FOUNDRY CO.—BROCKTON, MASS.
TREATED TIMBER PILING—NEW ENGLAND POLE & WOOD TREATING CORP.—MERRIMACK, N.H.
METAL PIPE CULVERTS—NEW ENGLAND METAL CULVERT CO.—WHITE RIVER JUNCTION, VT.
REINFORCED CONCRETE PIPE, PRECAST CURB D.I.W./GRATE, GUARD RAIL ITEMS, BOUNDARY &
PROJECT MARKERS—S.T. GRISWOLD & CO., INC.—WILLISTON, VT.

CONTRACTOR—CALEDONIA SAND & GRAVEL CO., INC.
ST. JOHNSBURY, VT.
RESIDENT ENGINEER—MARK W. REDMOND.
INSPECTORS—E. HUDSON, R. LANGE & A. SPIDLE.
RECORD PLANS—A. G. SPIDLE.

CONTRACT
DATED—DECEMBER 16, 1965.
STARTED—DECEMBER 22, 1965.
COMPLETED—JANUARY 19, 1967.
ACCEPTED—JANUARY 19, 1967.

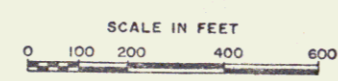


CONTRACTOR: CALEDONIA SAND & GRAVEL CO., INC., ST. JOHNSBURY, VT.

LOCATION: Beginning at a point 0.434 mile west of the E. Montpelier-Plainfield Town Line and extending easterly 0.777 miles.

PROJECT: E. MONTPELIER-PLAINFIELD F 028-3(4)
CONTRACTOR: CALEDONIA SAND & GRAVEL CO., INC.
ST. JOHNSBURY, VT.
CONSTR. COMPLETED—JANUARY 19, 1967.

CONSTRUCTION IDENTIFICATION SIGNS	SYMBOL
SLOPE RIGHTS	[Symbol]
GROUND ELEVATION	[Symbol]
GRADE ELEVATION	[Symbol]
CURVE DATA	[Symbol]
REFLECTION OF	[Symbol]
DEGREE OF CURVE	[Symbol]
RADIUS OF CURVE	[Symbol]
TANGENT DISTANCE	[Symbol]
LENGTH OF CURVE	[Symbol]
EXTERNAL DISTANCE	[Symbol]
POINT OF BEGINNING	[Symbol]
POINT OF CURVE	[Symbol]
POINT OF TANGENT	[Symbol]
POINT ON TANGENT	[Symbol]
POINT ON SUB-TANGENT	[Symbol]



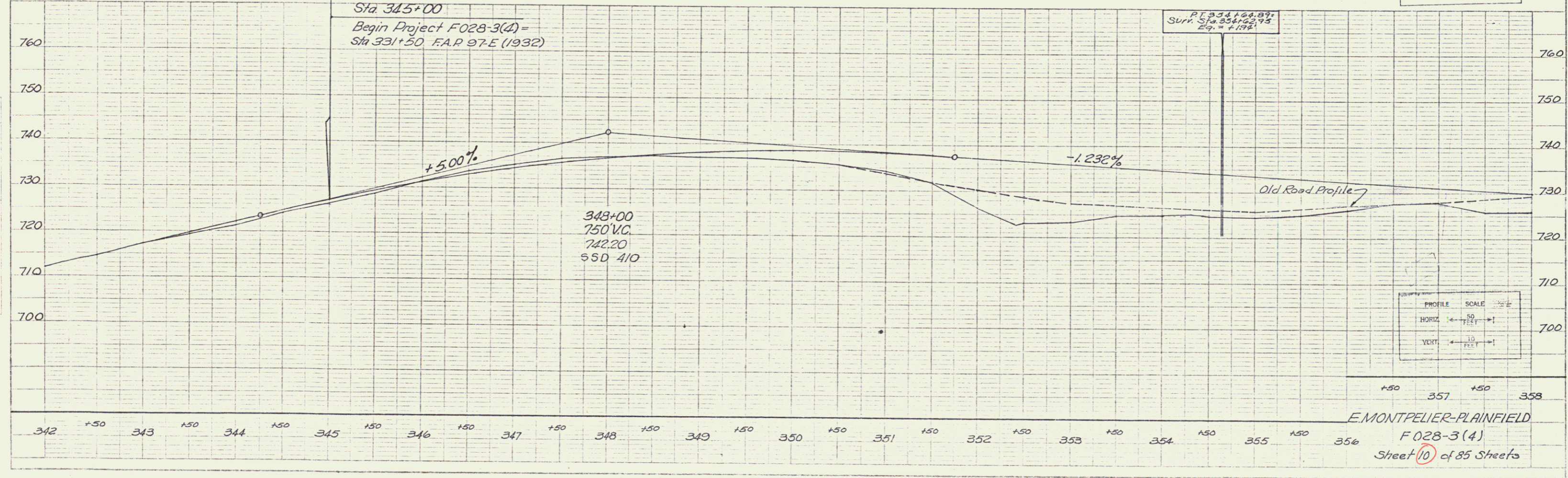
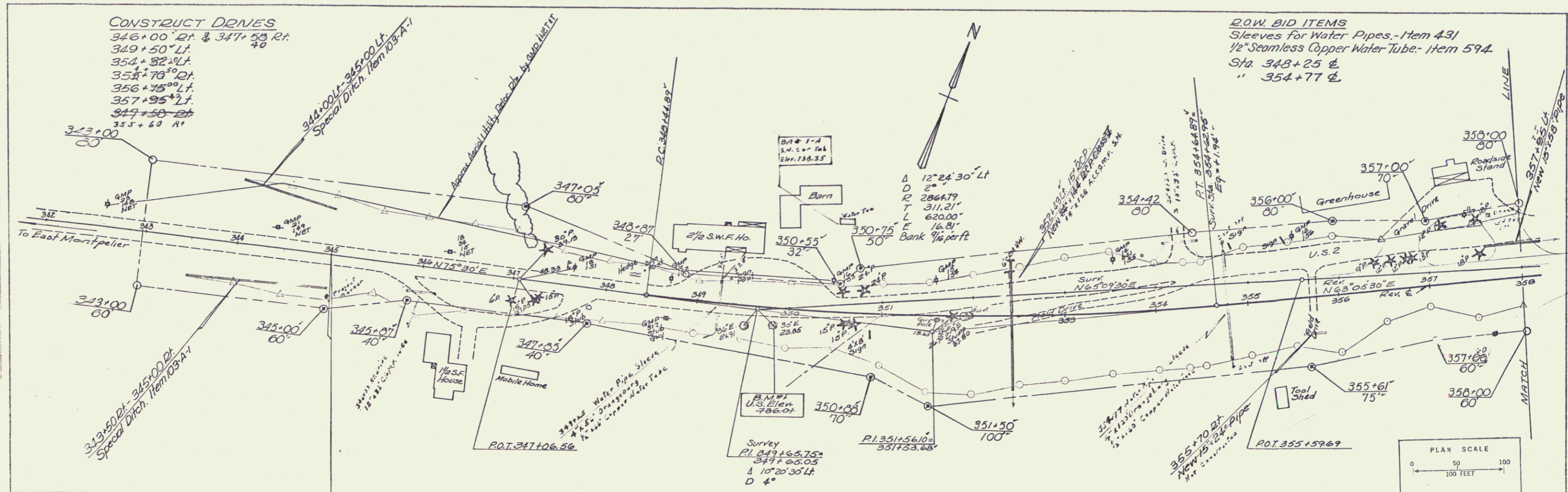
APPROVED: *R.H. Arnold* ASST. CHIEF ENGINEER DATE: 9/18/64
 APPROVED: *E.H. Diebny* CHIEF ENGINEER DATE: 9/18/64
 APPROVED: *L.H. Brown* CHIEF ENGINEER DATE: 9/18/64
 APPROVED: *R.F. Taylor* DISTRICT ENGINEER DATE: 9/18/64
 APPROVED: *L.M. Lane* DISTRICT ENGINEER DATE: 9/18/64
 APPROVED: *A.P. Leland* DISTRICT ENGINEER DATE: 9/18/64

RIGHT-OF-WAY DIVISION
TOWN FILE
PERPETUAL
Town of US 2
(To Be Returned To R.O.W. Division)

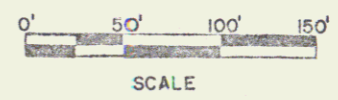
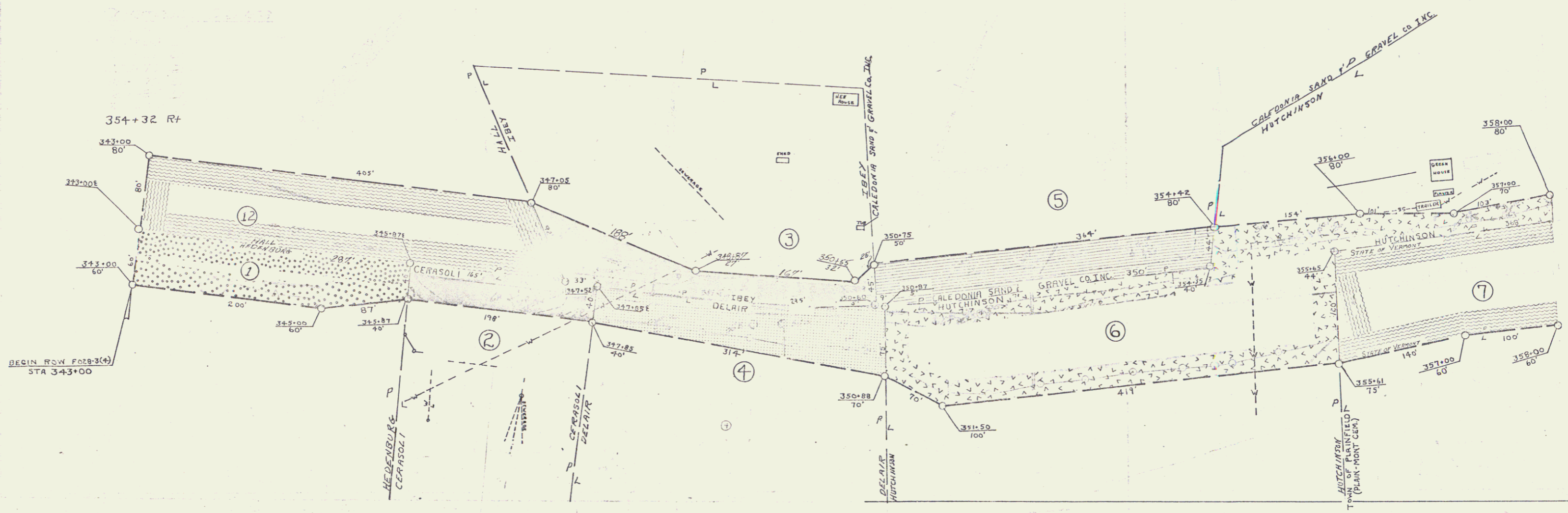
THESE PLANS ARE SUBJECT TO SUCH REVISIONS AS MAY BE
REQUIRED BY THE BUREAU OF PUBLIC ROADS OR THE COMMISSIONER
OF HIGHWAYS.
CONSTRUCTION IS TO BE CARRIED ON IN ACCORDANCE WITH
THESE PLANS AND THE STANDARD SPECIFICATIONS FOR HIGHWAY AND
BRIDGE CONSTRUCTION, DATED APRIL, 1964, AS APPROVED BY THE
BUREAU OF PUBLIC ROADS ON OCT. 12, 1964, INCLUDING ALL
SUBSEQUENT APPROVED REVISIONS AND SUCH REVISED SPECIFICATIONS
AND SPECIAL PROVISIONS AS ARE INCORPORATED IN THESE PLANS.

DEPARTMENT OF COMMERCE
BUREAU OF PUBLIC ROADS
PROJECT: F 028-3(4)
SHEET 1 OF SHEETS 85

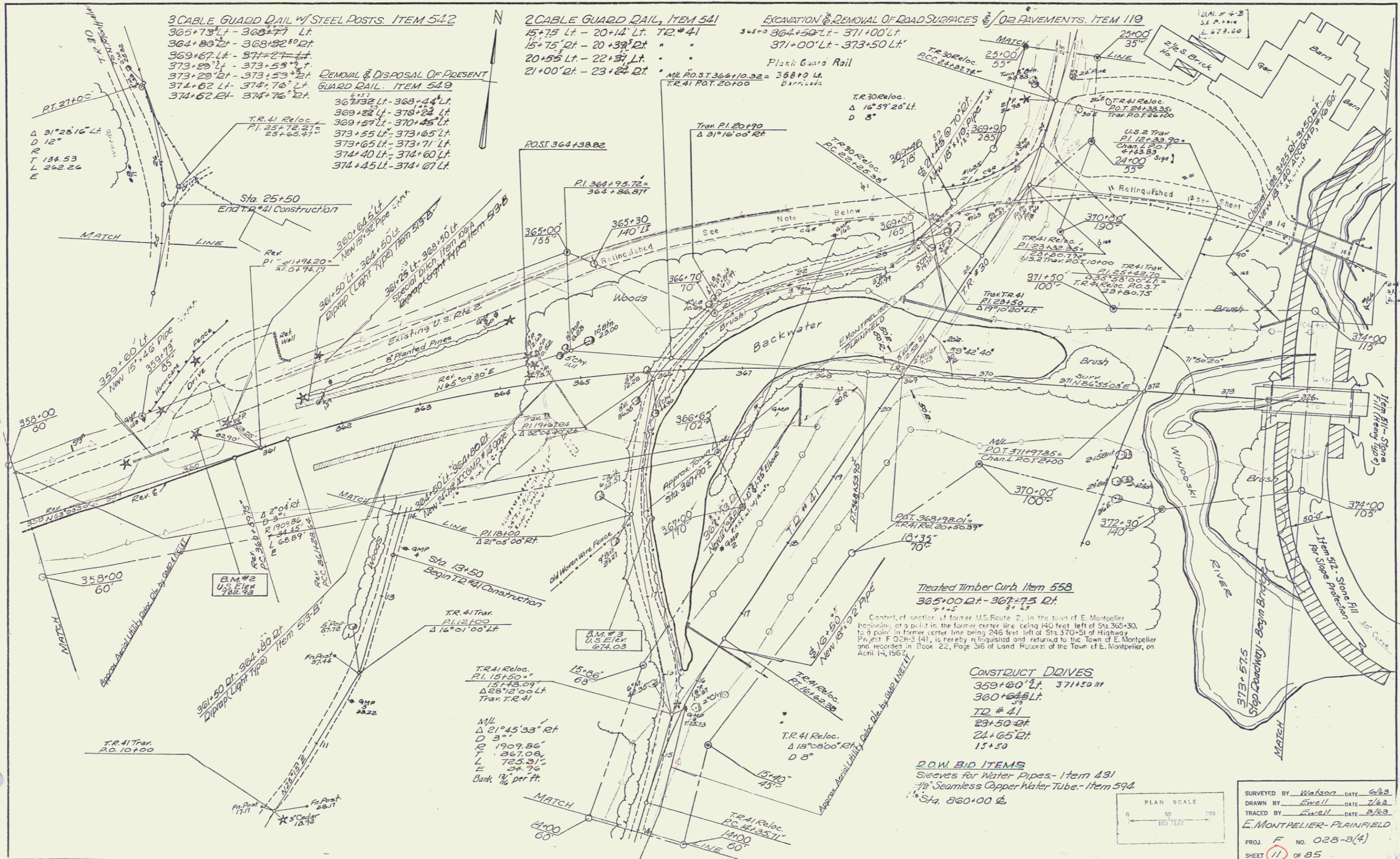
PLAN
 DATE: 10/15/09
 DRAWN BY: [unclear]
 CHECKED BY: [unclear]
 SCALE: 1" = 40'



POOR ORIGINAL COPY



VERMONT DEPARTMENT OF HIGHWAYS
RIGHT-OF-WAY PLANS
PROJECT: EAST MONTPELIER-PLAINFIELD
No. F 028-3(4)
SHEET 9 OF 16



3 CABLE GUARD RAIL w/ STEEL POSTS. ITEM 542

- 365+73' Lt - 368+77' Lt
- 364+83' Lt - 368+92' Lt
- 369+67' Lt - 374+27' Lt
- 373+23' Lt - 373+53' Lt
- 374+62' Lt - 374+76' Lt

REMOVAL & DISPOSAL OF PRESENT GUARD RAIL. ITEM 549

- 367+32' Lt - 368+24' Lt
- 369+22' Lt - 370+24' Lt
- 369+27' Lt - 370+45' Lt
- 373+55' Lt - 373+65' Lt
- 373+65' Lt - 373+71' Lt
- 374+40' Lt - 374+60' Lt
- 374+45' Lt - 374+67' Lt

2 CABLE GUARD RAIL, ITEM 541

- 15+75' Lt - 20+14' Lt. TIE # 41
- 15+75' Lt - 20+39' Lt
- 20+55' Lt - 22+37' Lt
- 21+00' Lt - 23+24' Lt

EXCAVATION & REMOVAL OF ROAD SURFACES & OR PAVEMENTS. ITEM 119

- 3+5+0 364+50' Lt - 371+00' Lt
- 371+00' Lt - 373+50' Lt

Treated Timber Curb, Item 558

- 365+00' Lt - 367+75' Lt

CONSTRUCT DRIVES

- 359+60' Lt. 371+50' Lt
- 360+64.5' Lt.
- TD # 41
- 23+50' Lt
- 24+65' Lt
- 15+50

D.O.W. BID ITEMS

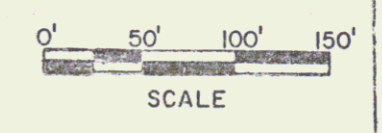
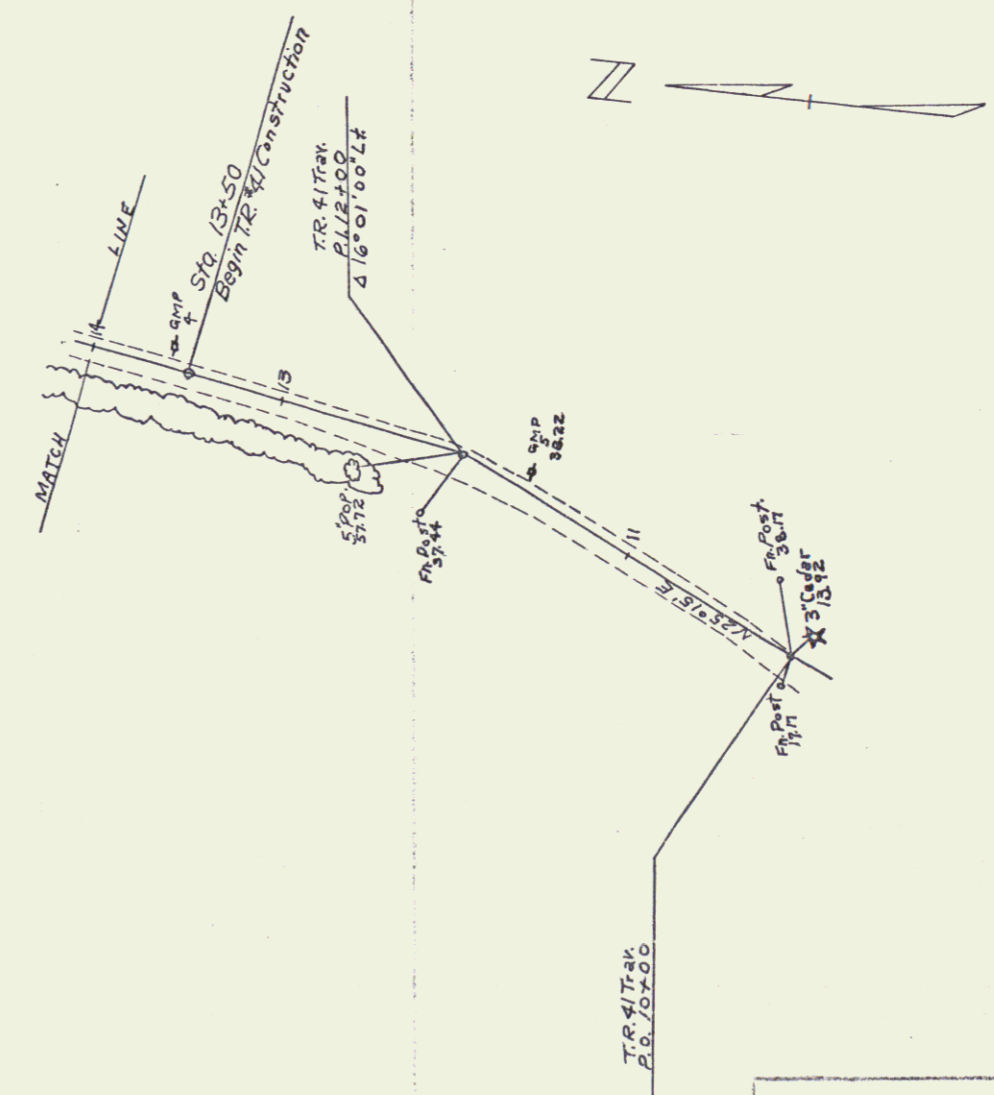
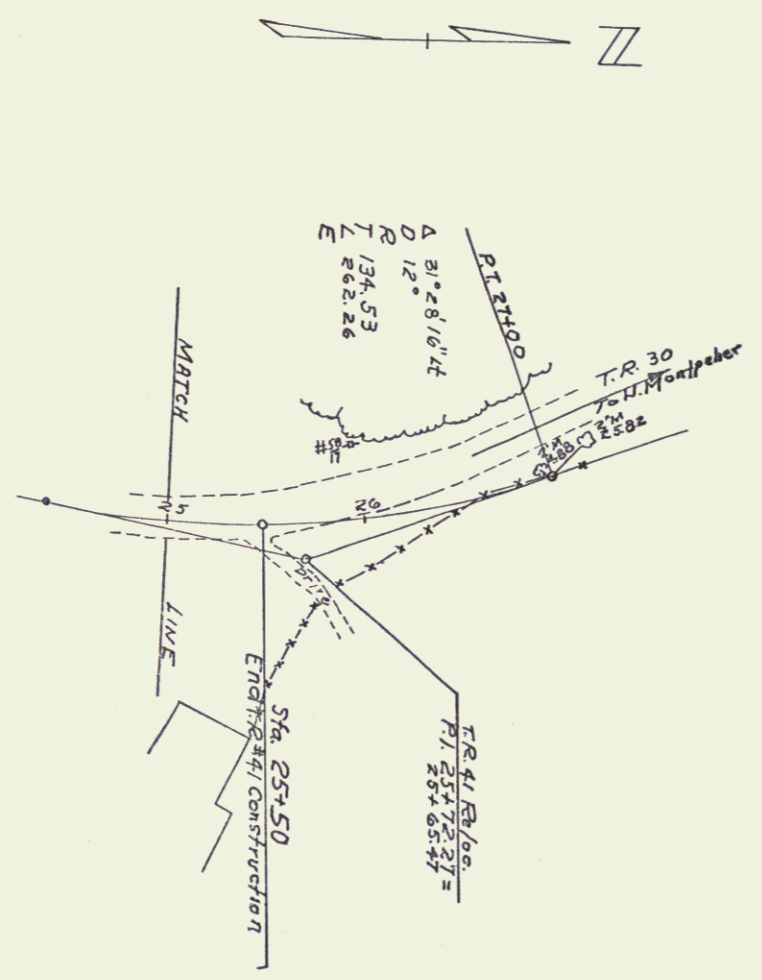
- Sleeves for Water Pipes - Item 431
- 1/2" Seamless Copper Water Tube - Item 594
- Sta. 360+00 Lt

SURVEYED BY Watson DATE 6/23
 DRAWN BY Ewell DATE 7/63
 TRACED BY Ewell DATE 3/63
E. MONTPELIER - PLAINFIELD
 PROJ. F. NO. 028-3(4)
 SHEET 11 OF 85

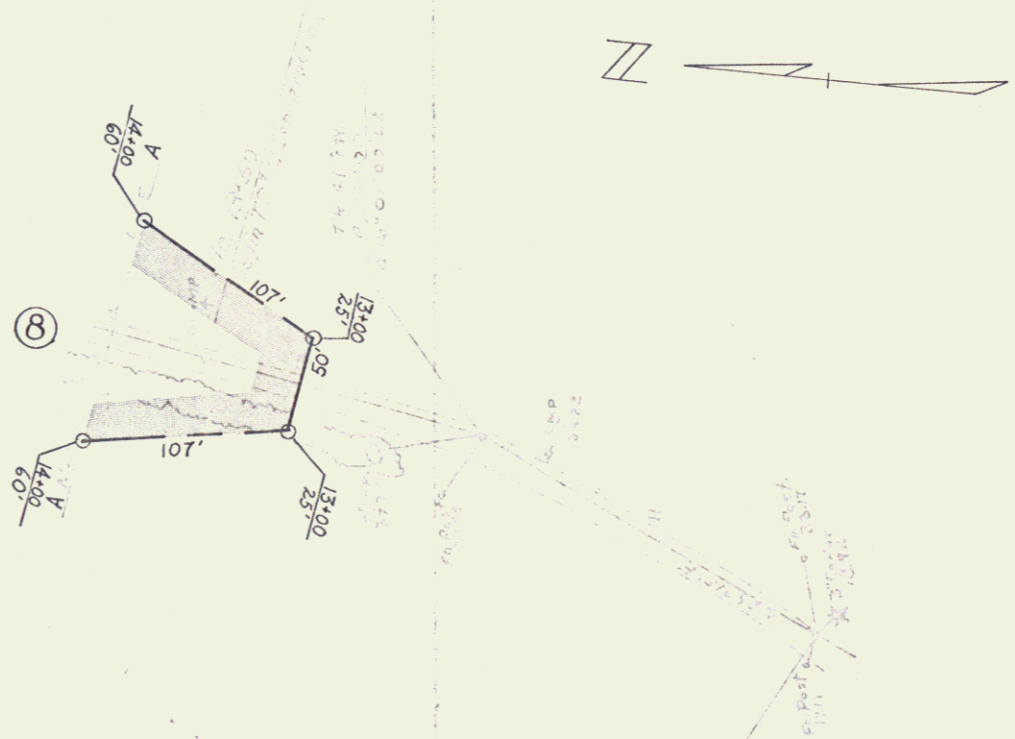
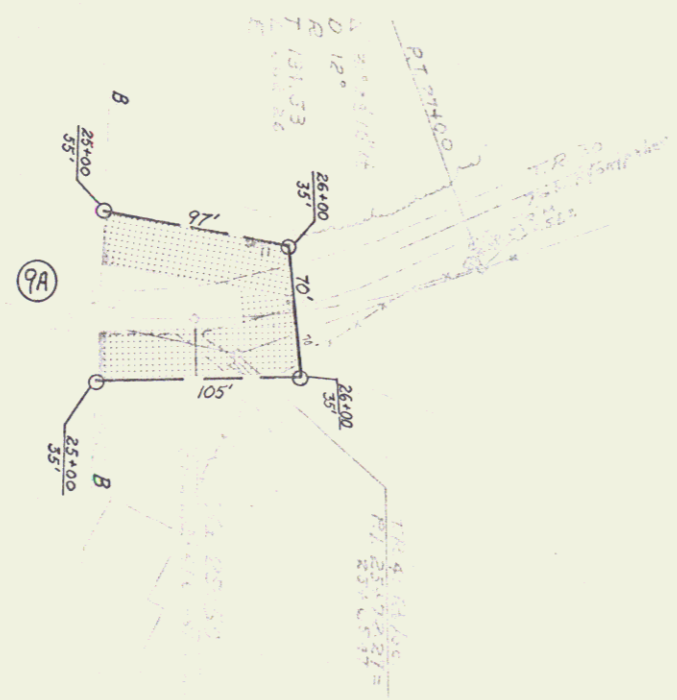
POOR ORIGINAL COPY



VERMONT DEPARTMENT OF HIGHWAYS
RIGHT-OF-WAY PLANS
PROJECT: EAST MONTPELIER-PLAINFIELD
No. F 028-3(4)
SHEET 10 OF 16



VERMONT DEPARTMENT OF HIGHWAYS
 RIGHT-OF-WAY PLANS
 PROJECT: EAST MONTPELIER - PLAINFIELD
 No. F 028-3(4)
 SHEET 12

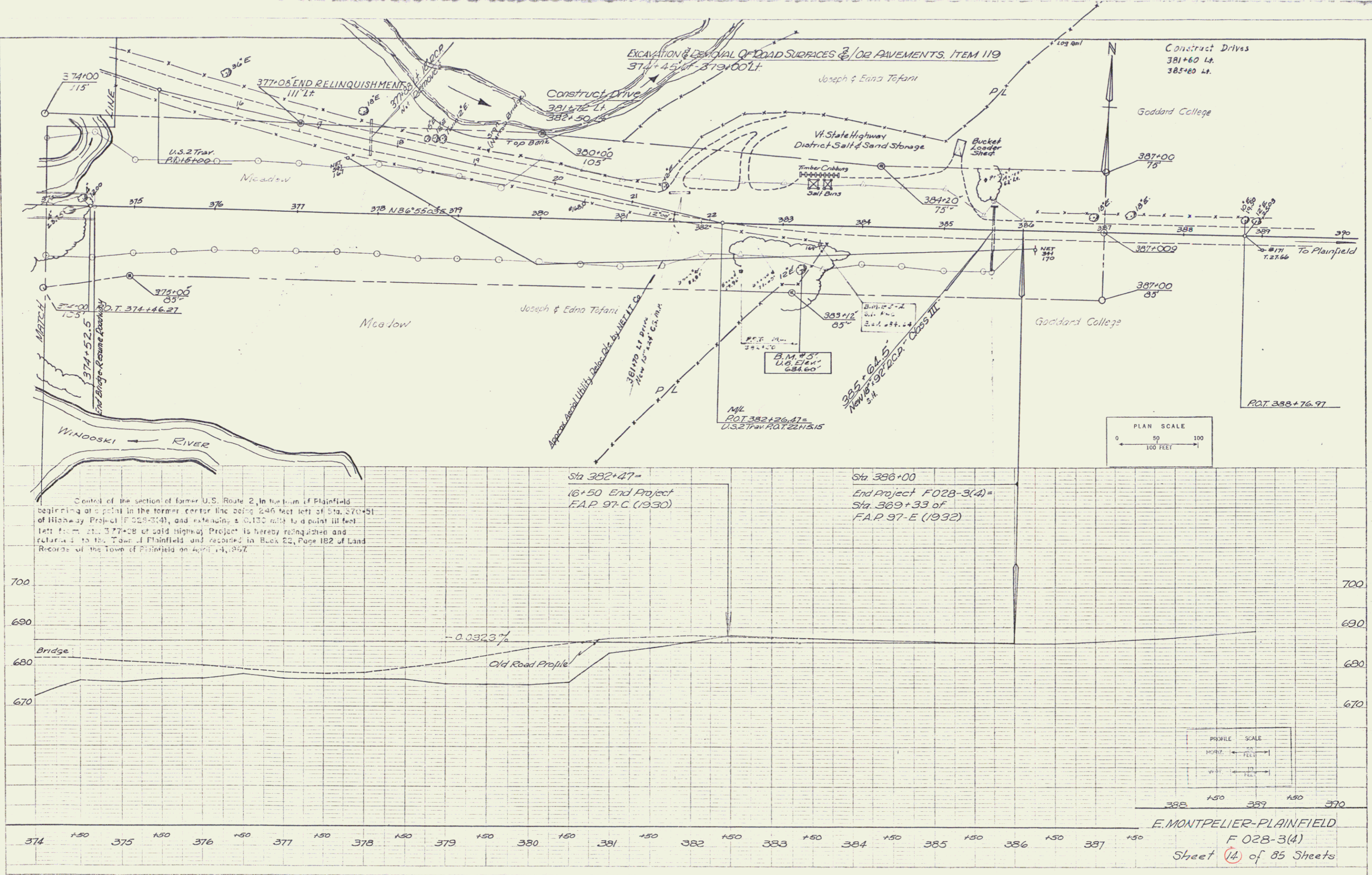


0' 50' 100' 150'
SCALE

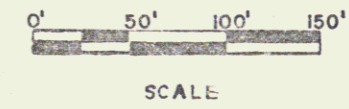
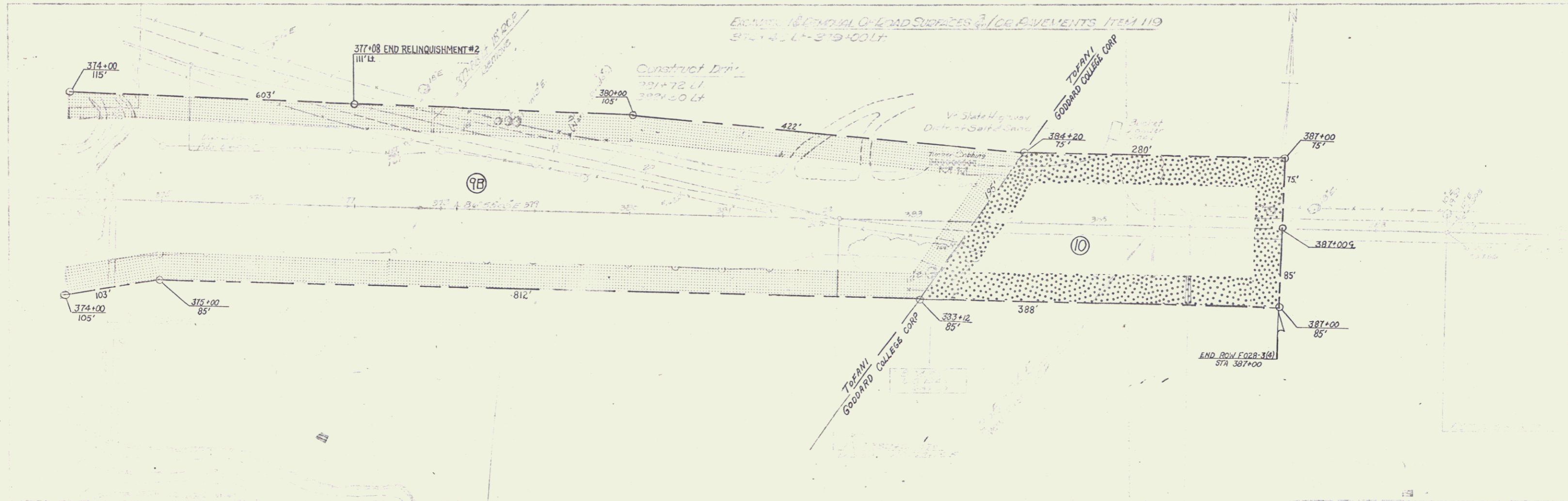
EAST MONTPELIER - PLAINFIELD
F 028-3(4)
10A 16

PLAN
 DATE 10/25/35
 DRAWN BY J.S.
 CHECKED BY J.S.

PROFILE
 DATE BOOK NO.



POOR ORIGINAL COPY



VERMONT DEPARTMENT OF HIGHWAYS
RIGHT - OF - WAY PLANS
PROJECT: EAST MONTPELIER - PLAINFIELD
No. F 028 - 3 (4)
SHEET 11 OF 16

9