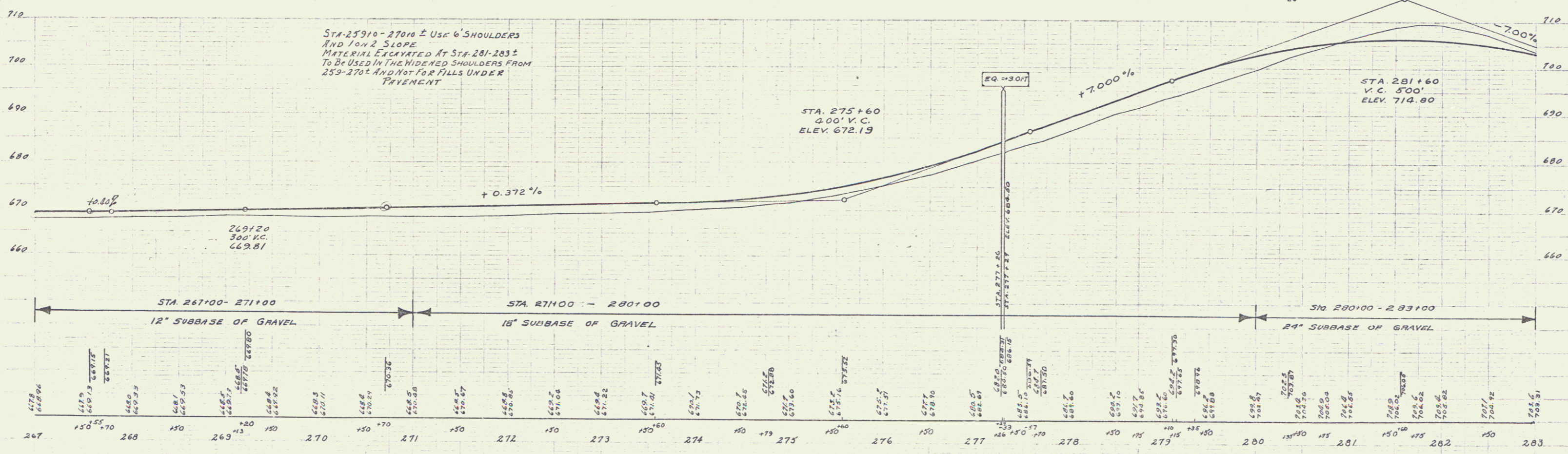
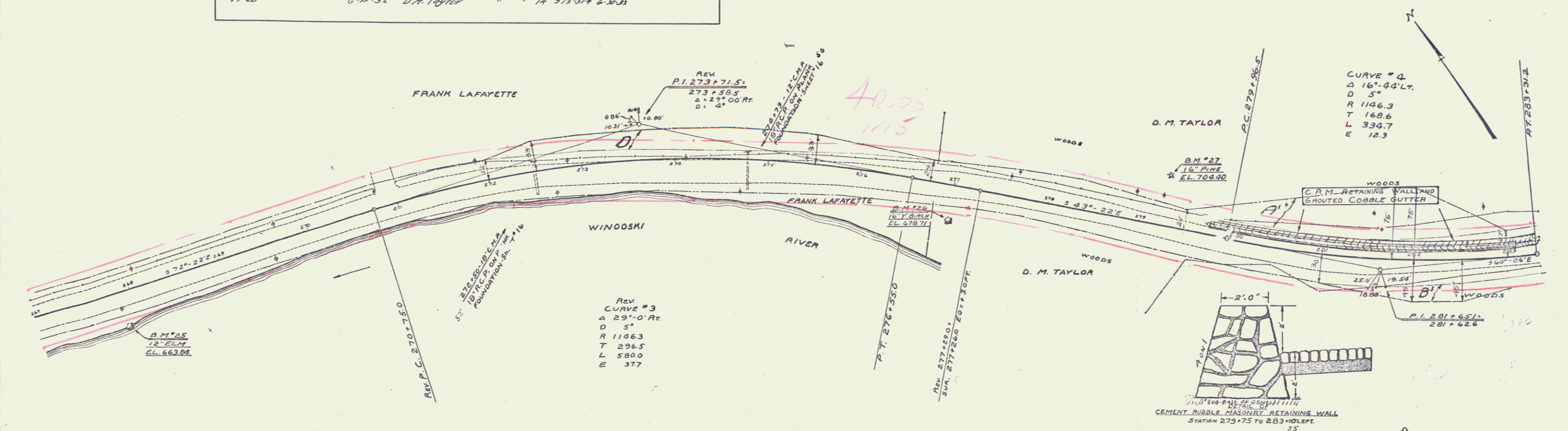


Parcel	Kind of Instrument	Date of Instrument	Grantor	Grantee	Recorded	Remarks
D	Q.C.D.	6-15-32	F.C. Lafayette	St. of H. W.	574-374 6-20-32	
D	"	6-14-32	D.M. Taylor	"	373-374 6-20-32	

CEMENT RUBBLE MASONRY RETAINING WALL
 Station - Station Volume
 279+75 - 283+10 LT. 200 cu. yd

GROUTED COBBLE GUTTER
 Station - Station Width Area
 279+75 - 283+10 LT. 3'-0" 149 sq. yds.

DATE: 9-7-1932
 SHEET: 5 OF 5

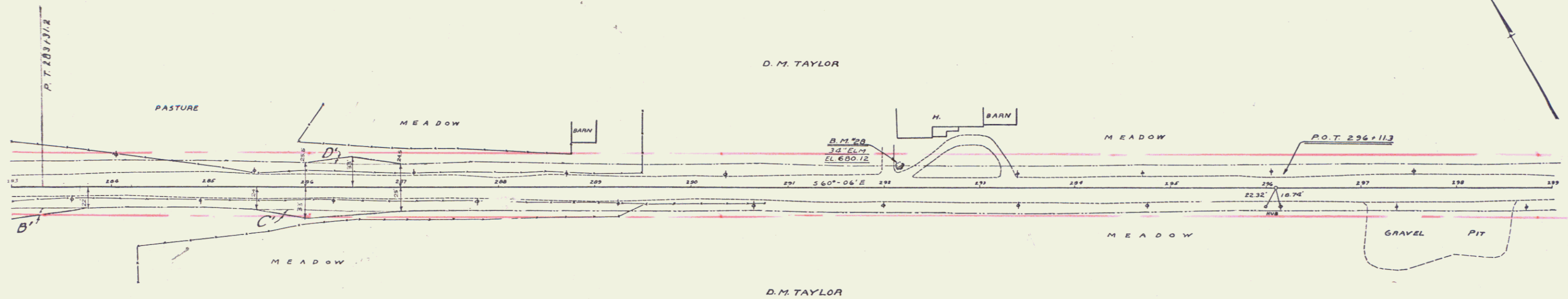


B.M. #25 SPIKE IN ROOT 12" ELM 37.5 FT. AT STA 267+00 ELEV. 663.84
 B.M. #26 SPIKE IN ROOT 16" Y. BIRCH 36 FT. AT STA 276+30 ELEV. 679.71
 B.M. #27 SPIKE IN ROOT 16" PINE 33 FT. LT. STA 279+26.0 ELEV. 704.40

SERIES F. No. 97-E
 SHEET 5 OF 5

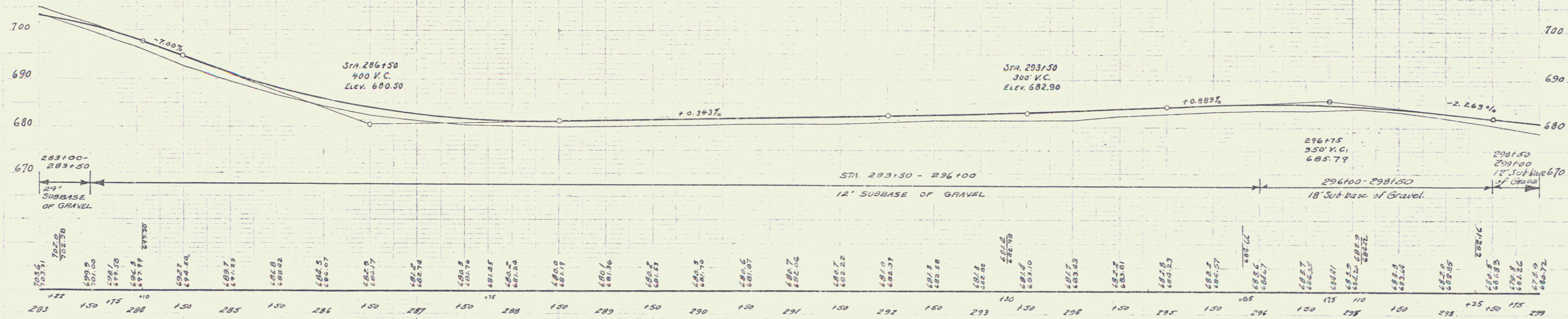
Parcel	Kind of Instrument	Date of Grant	Grantor	Grantee	Recorded Book Page	Date	Remarks
B, C & D	G.C.D.	6-15-32	D. M. Taylor	Steffh. 14	373-374	6-30-32	

97-E 1932 G 45



BARRETT BLUES

1 1/2" = 1" H.M.

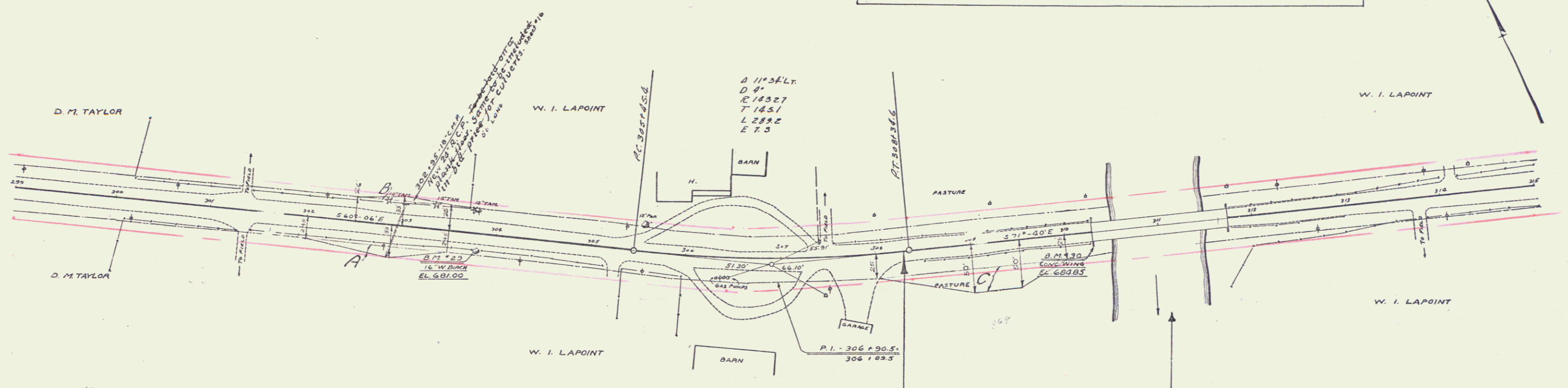


SERIES F. No 97.E
SHEET 6 OF 45

4

Parcel	Kind of Instrument	Date of Instrument	Grantor	Grantee	Recorded	Remarks
A, B, C	G.C.D.	6-15-32	W.A.S.B. LaPoint	Stofft	EA 311372	6-10-32

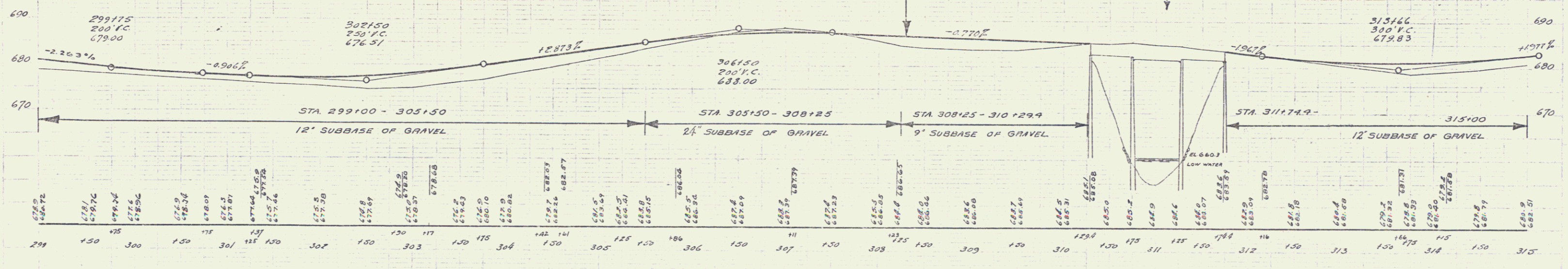
STATE OF MONTANA
 COUNTY OF DEER CREEK
 97-E 1932 7 4-5



REVISIONS
 May 10, 1932. Conv. of Sta. 302+95
 from 64' of 12" R.C.P. to 64' of 21" R.C.P.

STA. 308+31.9-6100 OF PROJ. 97-C
 END OF GOV'T. PARTICIPATION ON
 PROJECT 97-E.

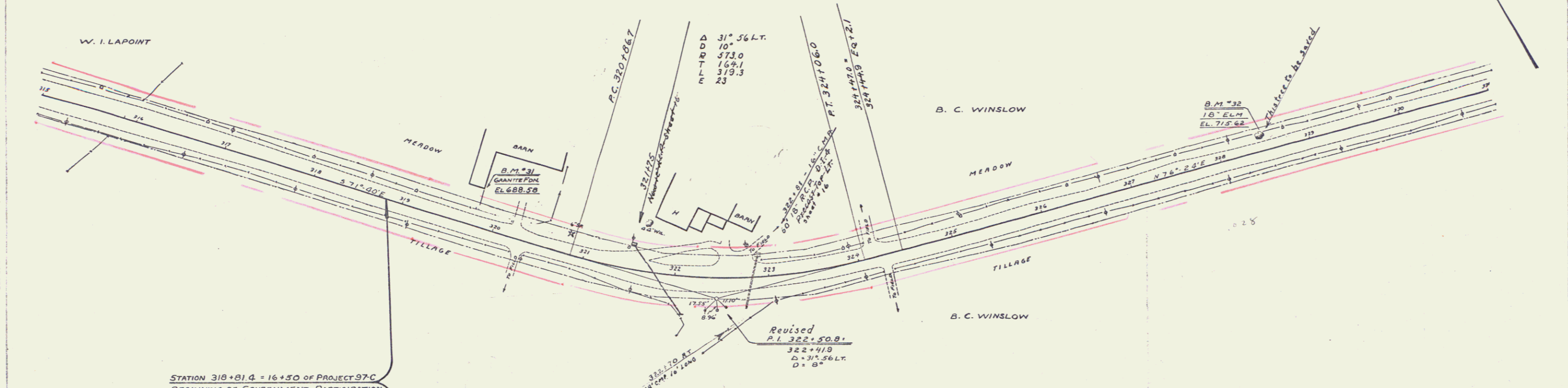
STA. 310+29.4-311+74.4
 LENGTH OVERALL = 145 FEET
 BRIDGE CONST. 1930 AS
 PART OF PROJECT 97-C.
 NOT INCL. IN PROJECT 97-E.
 EXISTING CABLE RAIL TO BE
 REMOVED - AS - IS. 1 3/4" DIA.
 NO SURFACING TO BE CARRIED
 ACROSS BRIDGE



B.M. # 29 SPIKE IN ROOT 16" W BIRCH 16.5 FT. AT STA. 303+01 ELEV. 681.00
 B.M. # 30 PAINT SPOT ON CONC. WING OF BRIDGE 10 FT AT STA. 310+29.5 ELEV. 684.85

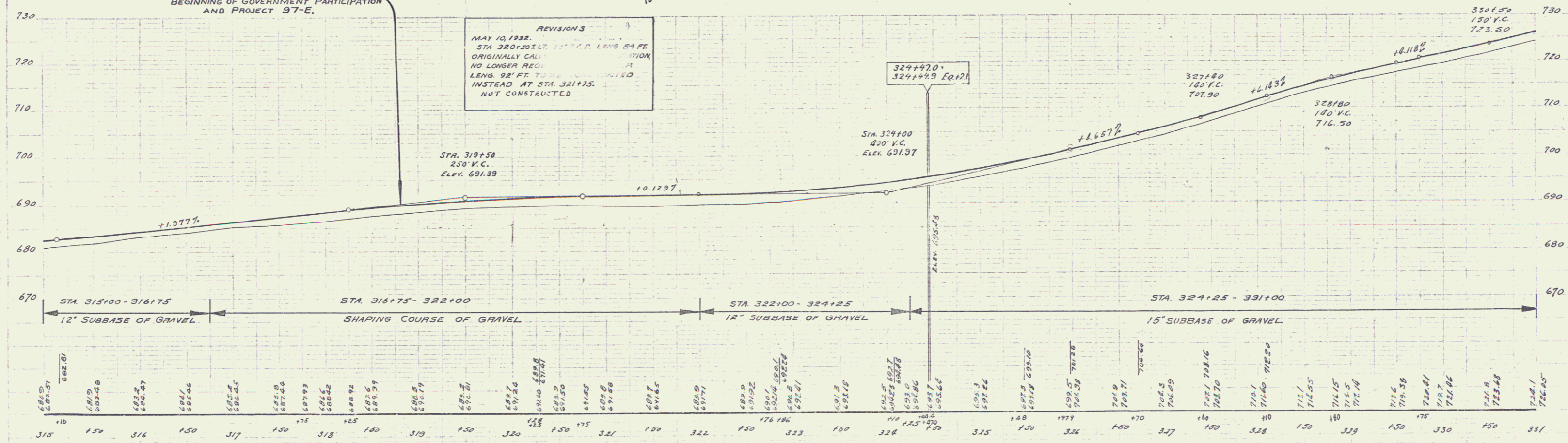
SERIES F- No. 97-E
 SHEET 7 of 4-5

5



STATION 318+81.4 = 16+50 OF PROJECT 97-C
 BEGINNING OF GOVERNMENT PARTICIPATION
 AND PROJECT 97-E.

REVISIONS
 MAY 10, 1932.
 STA 320+50 LT. 12\"/>

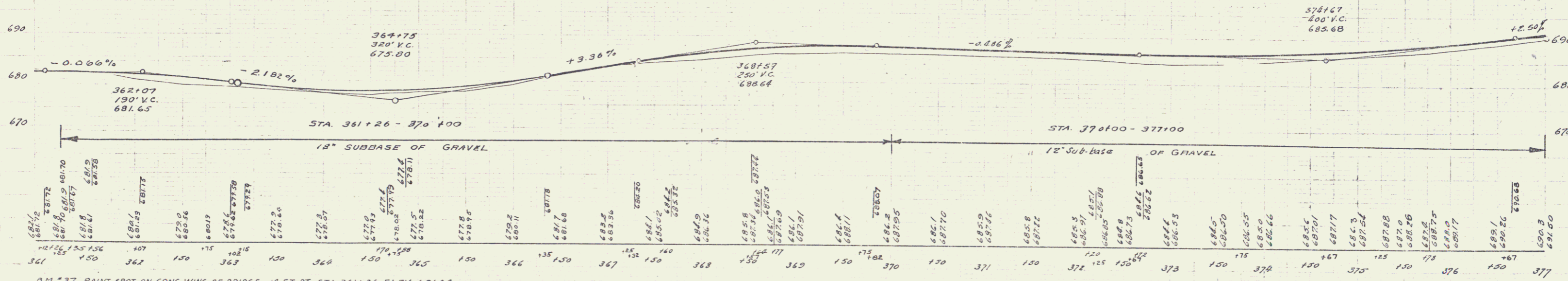
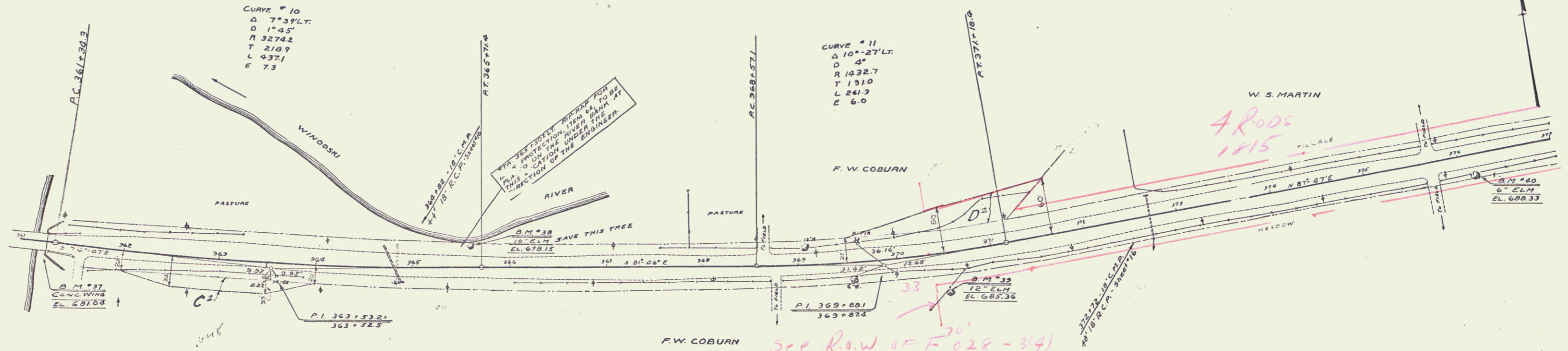


B.M. 31 PAINT SPOT ON GRANITE FDN 41.5 FT. LT. STA. 319+00 ELEV. 688.50
 B.M. 32 SPIKE IN ROOT 18\"/>

6

Parcel	Kind of Instrument	Date of Grant	Grantor	Grantee	Recorded Platfield Date	Remarks
C140	C.C.D.	6-10-32	FR. & S. COBURN	STOFFA	13 Jan 34	67302

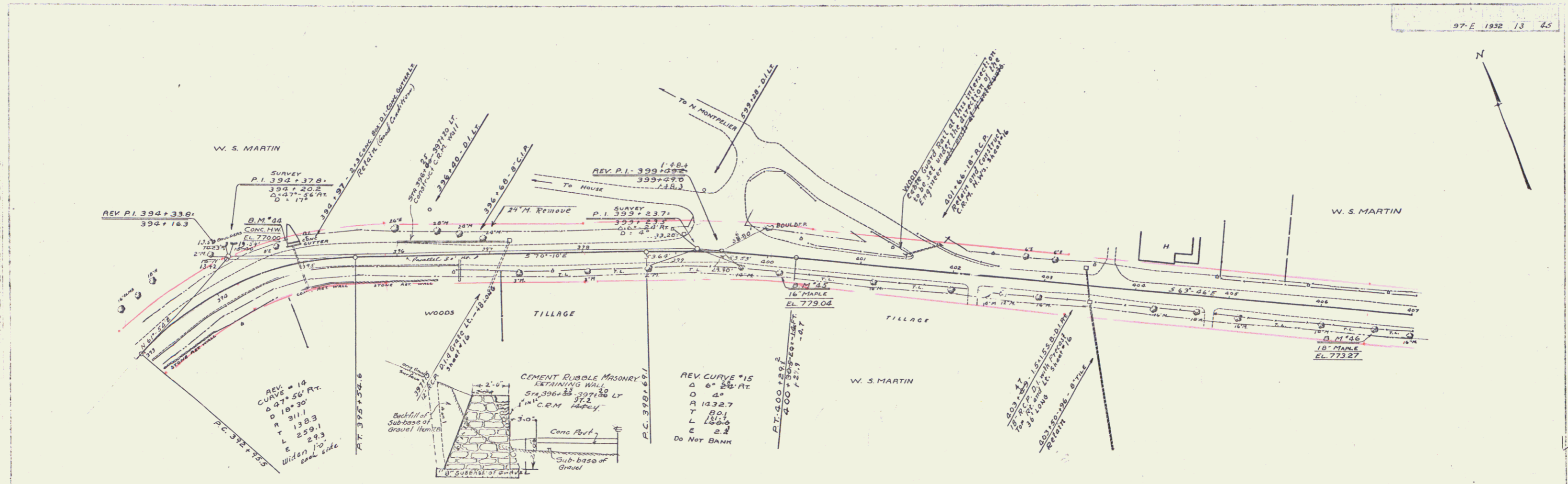
97-E 1932 11 45



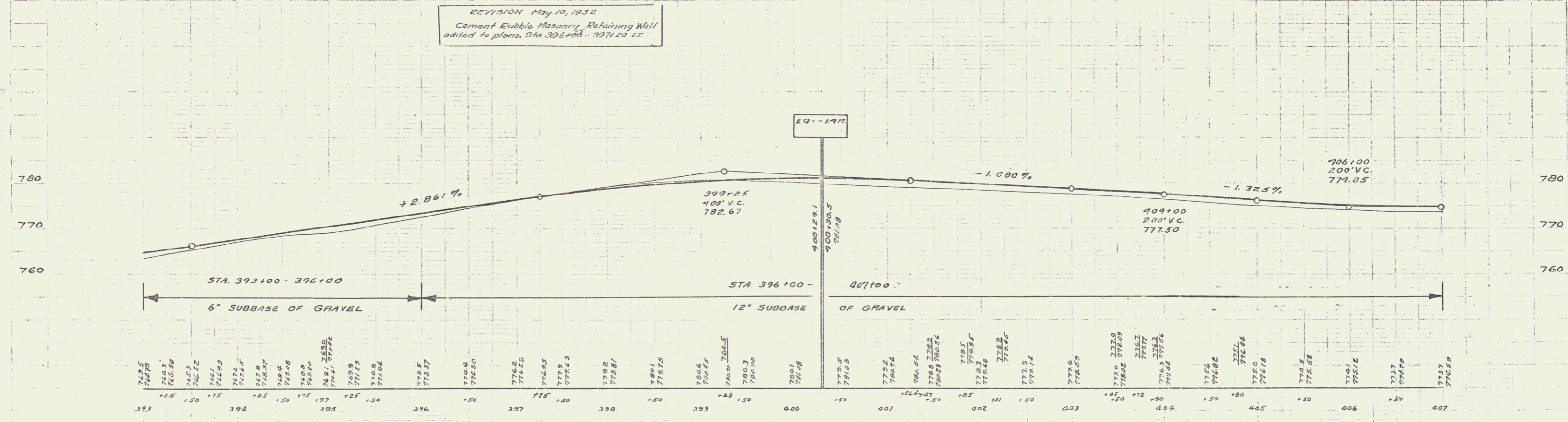
B.M. #37 PAINT SPOT ON CONC WING OF BRIDGE 14 FT AT STA. 361+26 ELEV. 681.04
 B.M. #38 SPIKE IN ROOT 10" ELM 22 FT LT. STA. 365+40 ELEV. 678.15
 B.M. #39 SPIKE IN ROOT 12" ELM 30 FT AT STA. 370+53 ELEV. 685.36
 B.M. #40 SPIKE IN TRUNK 6" ELM 19.5 FT AT STA. 376+170 ELEV. 688.33

SERIES F-No 97E
 SHEET 7 of 45

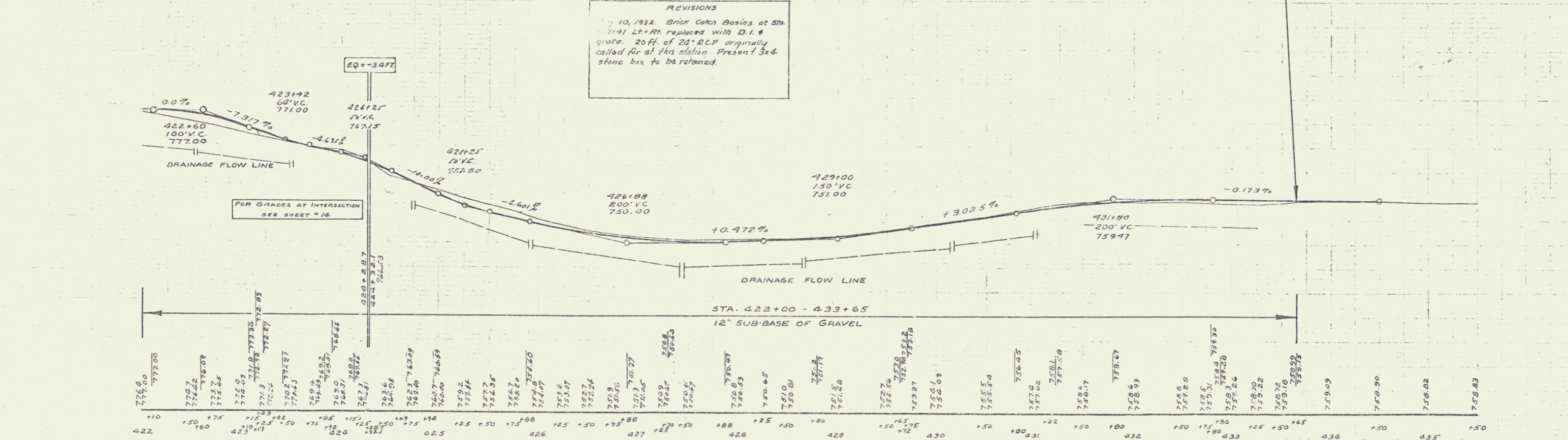
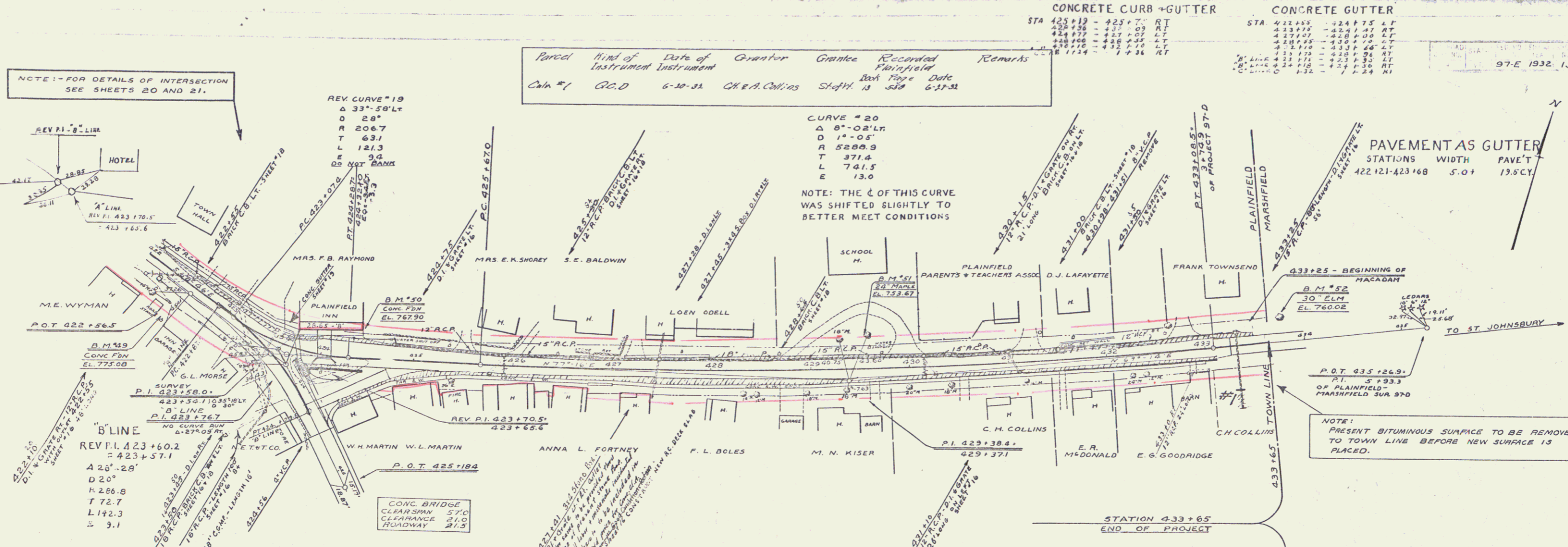
9



REVISION May 10, 1932
Cement Rubble Masonry Retaining Wall added to plans, Sta 396+00 - 397+20 LT.



B.M. # 44 PAINT SPOT ON CONC. H.W. 23 FT. LT. STA. 394+03 ELEV. 770.00
 B.M. # 45 SPIKE IN ROOT 16' MAPLE 12 FT. AT STA. 400+15 ELEV. 779.04
 B.M. # 46 SPIKE IN ROOT 18' MAPLE 15.5 FT. AT STA. 406+60 ELEV. 773.27



B.M. #29 PAINT SPOT ON GAS PUMP FDN 20.5 FT AT STA. 422+47 ELEV. 775.00
 B.M. #30 PAINT SPOT ON CONC. FDN POST AT INN 20 FT LT STA. 426+47 ELEV. 767.50
 B.M. #31 SPIKE IN ROOT 28" MAPLE 27 FT LT STA. 429+56 ELEV. 753.67
 B.M. #32 SPIKE IN ROOT 30" ELM 23 FT LT STA. 433+76 ELEV. 760.02

Parcel	Kind of Instrument	Date of Grant	Grantor	Grantee	Recorded	Remarks
421	G.C.D.	6-10-31	Chas. Collins	Staff	18	589 6-31-31

CONCRETE CURB + GUTTER		CONCRETE GUTTER	
STA	RT	STA	LT
423+19	423+7	422+55	424+75
423+28	423+10	422+75	424+95
423+37	423+19	422+95	425+15
423+46	423+28	423+15	425+35
423+55	423+37	423+35	425+55
423+64	423+46	423+55	425+75
423+73	423+55	423+75	425+95
423+82	423+64	423+95	426+15
423+91	423+73	424+15	426+35
423+100	423+82	424+35	426+55
423+109	423+91	424+55	426+75
423+118	423+100	424+75	426+95
423+127	423+109	424+95	427+15
423+136	423+118	425+15	427+35
423+145	423+127	425+35	427+55
423+154	423+136	425+55	427+75

SERIES F - No. 97-E
SHEET 15 of 4-5