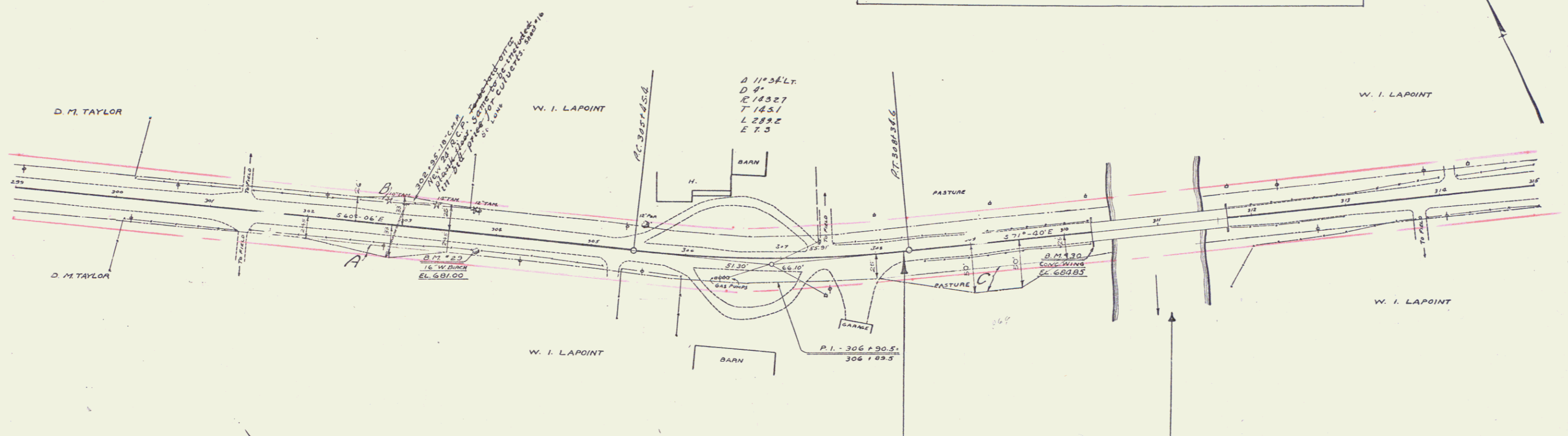


Parcel	Kind of Instrument	Date of Instrument	Grantor	Grantee	Recorded	Remarks
A, B, C	G.C.D.	6-15-32	W.A.S.B. Lapoint	Stofft	EA 311372	6-10-32

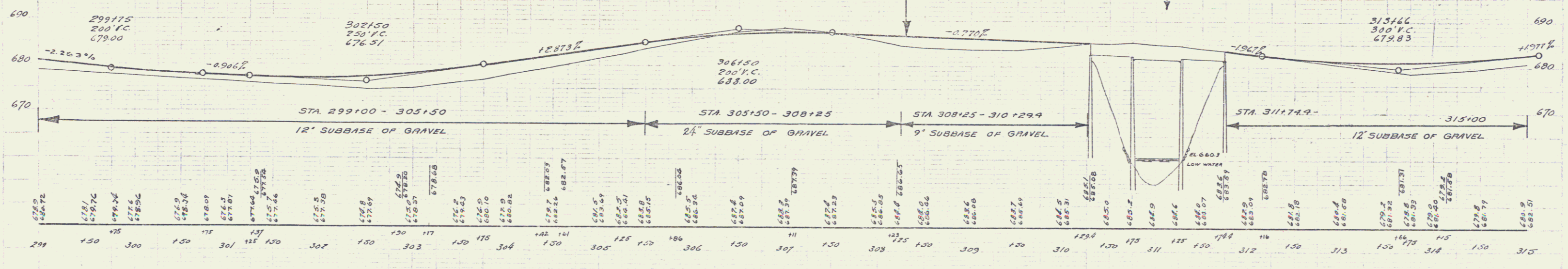
STATE OF MONTANA
 COUNTY OF DEER CREEK
 97-E 1932 7 4-5



REVISIONS
 May 10, 1932. CHY. at Sta 302+95
 from 64' of 18" R.C.P. to 64' of 21" R.C.P.

STA 308+31.9-6100 OF PROJ. 97-C
 END OF GOV'T PARTICIPATION ON
 PROJECT 97-E.

STA 310+29.4-311+74.4
 LENGTH OVERALL = 145 FEET
 BRIDGE CONST. 1930 AS
 PART OF PROJECT 97-C.
 NOT INCL. IN PROJECT 97-E.
 EXISTING CABLE RAIL TO BE
 REMOVED - A-3-15. 1 3/4" DIA. 12' L.
 NO SURFACING TO BE CARRIED
 ACROSS BRIDGE



B.M. # 29 SPIKE IN ROOT 16" W BIRCH 16.5 FT. AT STA 303+01 ELEV. 681.00
 B.M. # 30 PAINT SPOT ON CONC. WING OF BRIDGE 10 FT AT STA 310+29.5 ELEV. 684.85

SERIES F- No. 97-E
 SHEET 7 of 4-5

5