

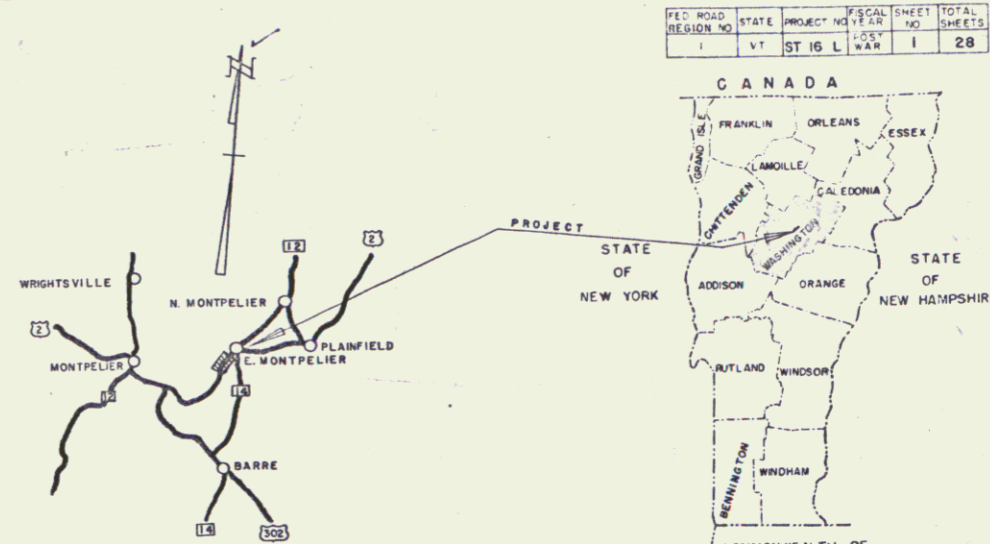
INDEX OF SHEETS

SHEET NO.	TITLE PAGE
1	TITLE PAGE
2	TYPICAL CROSS SECTION OF IMPROVEMENT <small>SINGLE TRACK COAT OF REFINED TAR AND SLAB, 1/2" PEAS, 4" STONE, SEAL WHITE TOPPAK, ASPHALT, 1 1/2" S.T.Y. AND BITUMINOUS CONCRETE</small>
3	QUANTITY SHEET - ITEMS
4	EARTHWORK SHEET
5-6	PLAN AND PROFILE SHEETS
7	DETAIL SHEET - 11'-6" X 96' C.G.M.P. PIPE - STA. 217 +13
8	STANDARD STRUCTURE SHEET RS 56-1 BANKING
9	STANDARD STRUCTURE SHEET RS 56-3 BOUNDARY MARKERS
10	STANDARD STRUCTURE SHEET RS 56-4 UNDERDRAIN
11	STANDARD STRUCTURE SHEET RS 56-6 SLOPES AND TURNOUTS
12	STANDARD STRUCTURE SHEET RS 56-11 GUARD RAIL
13	STANDARD STRUCTURE SHEET RS 56-12 BARRICADES, SIGNS, & LIGHTS
14-23	CROSS SECTIONS
24-28	CHANNEL SECTIONS

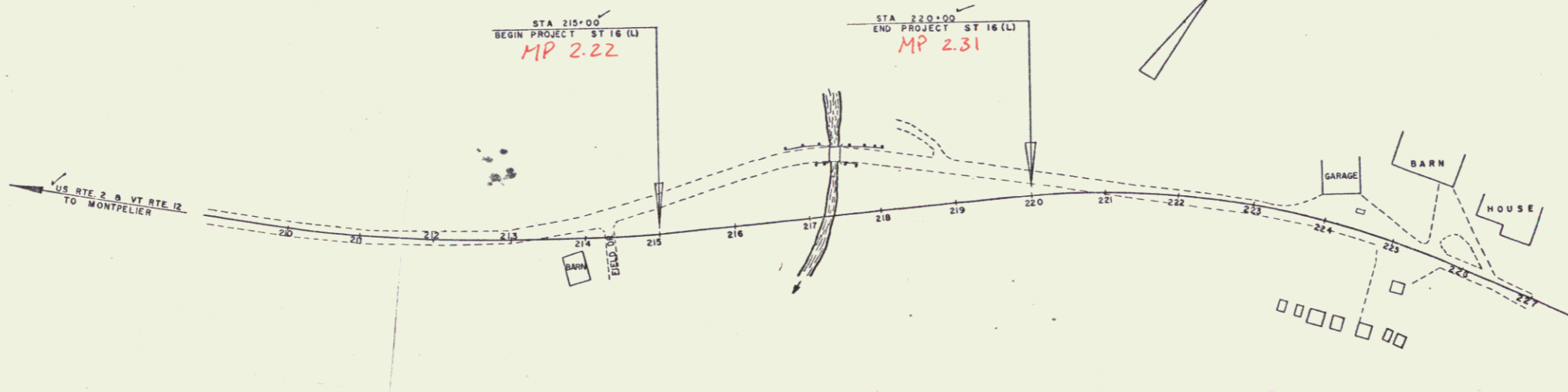
STATE OF VERMONT
DEPARTMENT OF HIGHWAYS
PROPOSED IMPROVEMENT

TOWN OF EAST MONTPELIER
COUNTY OF WASHINGTON
US ROUTE 2
MONTPELIER-PLAINFIELD ROAD

BEGINNING AT A POINT ON U.S. ROUTE 2, 2713 FT. WESTERLY OF THE INTERSECTION OF ROUTES U.S. 2 AND VT. RTE. 14 IN THE HAMLET OF EAST MONTPELIER, AND EXTENDING EASTERLY 500 FEET
LENGTH OF PROJECT 500 FEET = 0.094 MILES



EAST MONTPELIER ST 16 (L)	TYPE	PAVEMENT AREA
	BITUMINOUS CONCRETE	6.99 SQ.
RECORD PLANS		
MATERIALS		
SUB-BASE OF GRAVEL	CALEDONIA SAND & GRAVEL CO. INC. PLAINFIELD, VERMONT	NORTHEASTERN CULVERT CORP. WESTMINSTER, VERMONT
SUB-BASE OF SAND	DITTO	REPUBLIC STEEL CORP. CLEVELAND, OHIO
REFINED TAR	LOPPER PRODUCTS CO. EVERETT, MASS.	CABLE FOR GRAIL AMERICAN STEEL WIRE CO. NEW HAVEN, CONN.
BITUMINOUS CONCRETE	CALCO, INC. PLAINFIELD, VT.	NORTHEASTERN CULVERT CORP. WESTMINSTER, VERMONT
CONTRACTOR	CALEDONIA SAND & GRAVEL CO. INC.	CONTRACT DATED
RESIDENT ENGINEER	H.A. HEALD	CONTRACT STARTED
INSPECTOR	H. MILES C. HELEFRICH	CONTRACT COMPLETED
RECORD PLANS	H.A. HEALD	CONTRACT ACCEPTED



RIGHT-OF-WAY DIVISION
TOWN FILE
PERPETUAL
Town of US 2
(To Be Returned To R.O.W. Division)

COUNTY: TOWN: FENCE: STONE: UNFEN: GUARD: TRAVE: RAILRI: RETAI: CENVE: SURVE: CULVEI: DROP: TROLL: POWER: TELEP: TREES: HEISE:

PROJECT: East Montpelier
LENGTH: 0.094 MI.
TYPE: Bituminous Concrete
CONTRACTOR: Caledonia Sand and Gravel Co., Inc.
LOCATION: Beginning at a point on Route 2, 2713 feet west of the intersection of Route 14 & 2, 1/2 mile east in the hamlet of East Montpelier and extending easterly 500 feet.
EAST MONTPELIER, VERMONT
RECORD PLANS: H.A. HEALD
CONSTR. COMPLETED: AUGUST 13, 1959

GROUND ELEVATION	DATUM	UNIT
GRADE ELEVATION	DATUM	UNIT
CURVE DATA		
DEFLECTION OF ANGLE	Δ	
DEGREE OF CURVE	D	
RADIUS OF CURVE	R	
TANGENT DISTANCE	T	
LENGTH OF CURVE	L	
EXTERNAL DISTANCE	E	
POINT OF INTERSECTION	PI	
POINT OF CURVE	PC	
POINT OF TANGENT	PT	
POINT ON TANGENT	POT	
POINT ON SUB-TANGENT	POST	

SCALES

TITLE	1" = 100'
TYPICAL	1" = 2'
PLAN	1" = 50'
PROFILE HORIZONTAL	1" = 50'
PROFILE VERTICAL	1" = 10'
CROSS-SECTIONS	1" = 5'

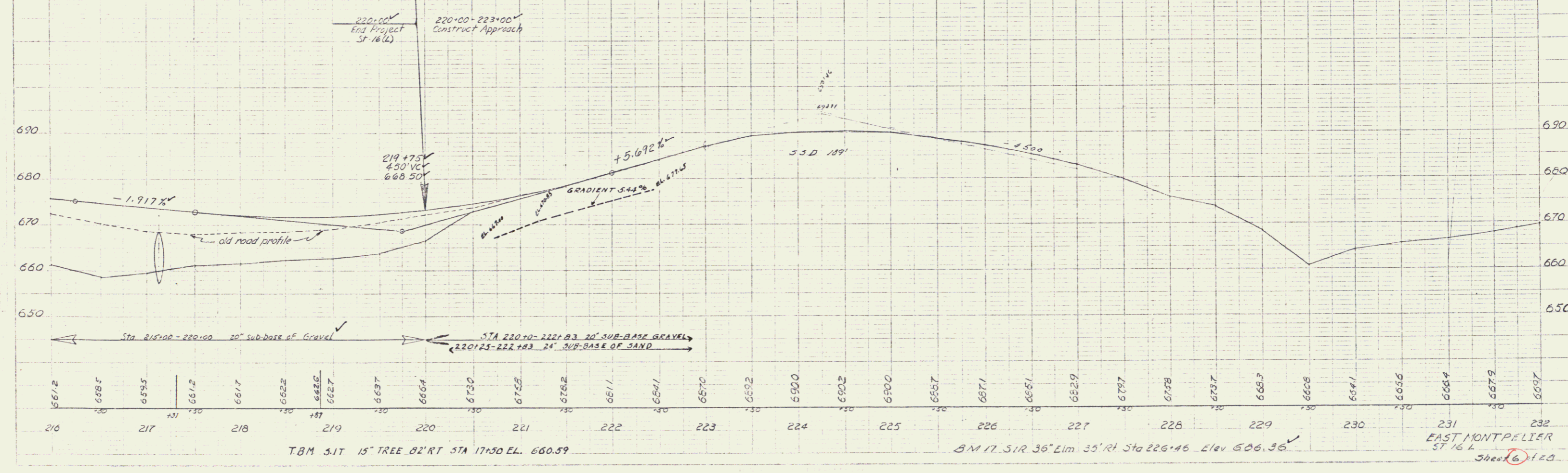
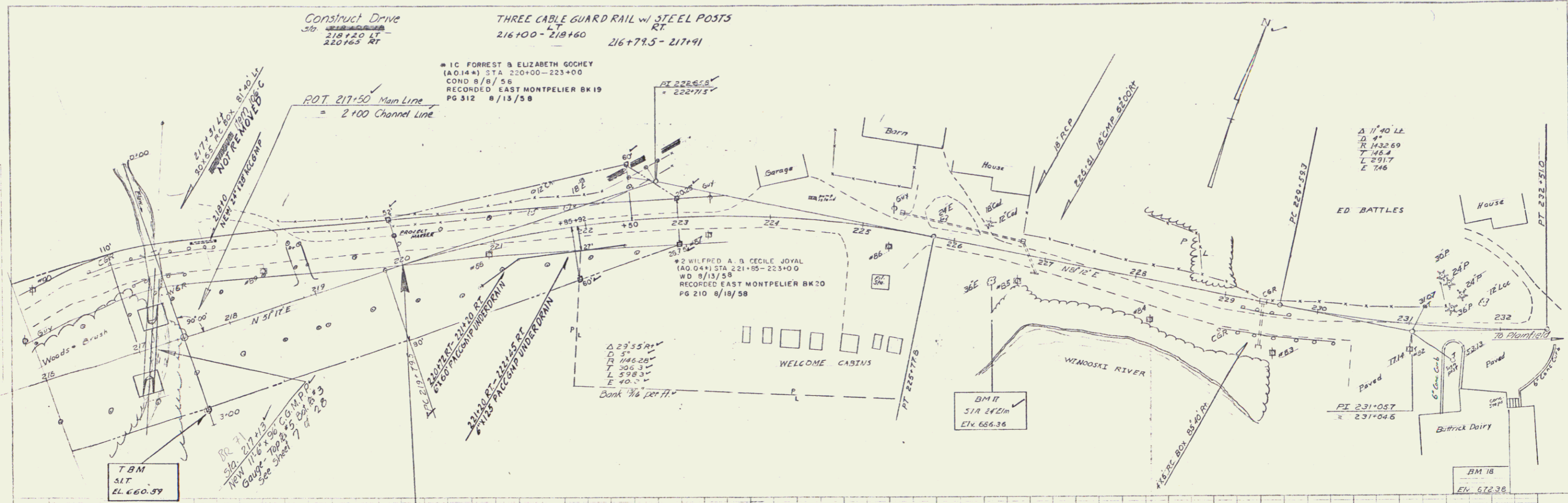
THESE PLANS ARE SUBJECT TO SUCH REVISIONS AS MAY BE REQUIRED BY THE BUREAU OF PUBLIC ROADS OR THE COMMISSIONER OF HIGHWAYS.
CONSTRUCTION IS TO BE CARRIED ON IN ACCORDANCE WITH THE PLANS AND THE STANDARD SPECIFICATIONS FOR HIGHWAY AND BRIDGE CONSTRUCTION OF JANUARY 1956 SUBMITTED TO THE BUREAU OF PUBLIC ROADS AS APPROVED JULY 5, 1956, INCLUDING ALL SUBSEQUENT APPROVED REVISIONS AND SUCH REVISED SPECIFICATIONS AND SPECIAL PROVISIONS AS ARE SUBMITTED WITH THE PLANS.

DEPARTMENT OF COMMERCE
BUREAU OF PUBLIC ROADS

APPROVED: _____
DIVISION ENGINEER DATE _____

PROJECT: ST. NO. 16 (L)
SHEET 1 OF 28 SHEETS

APPROVED SECONDARY ENGINEER	APPROVED CONSTRUCTION ENGINEER	APPROVED BRIDGE ENGINEER	APPROVED DISTRICT ENGINEER	APPROVED HIGHWAY ENGINEER	APPROVED SUPERVISOR
DATE _____	DATE <u>Aug 11 1958</u>	DATE _____	DATE <u>Aug 11 1958</u>	DATE <u>Aug 11 1958</u>	DATE <u>Aug 11 1958</u>



Sheet 6 of 29