

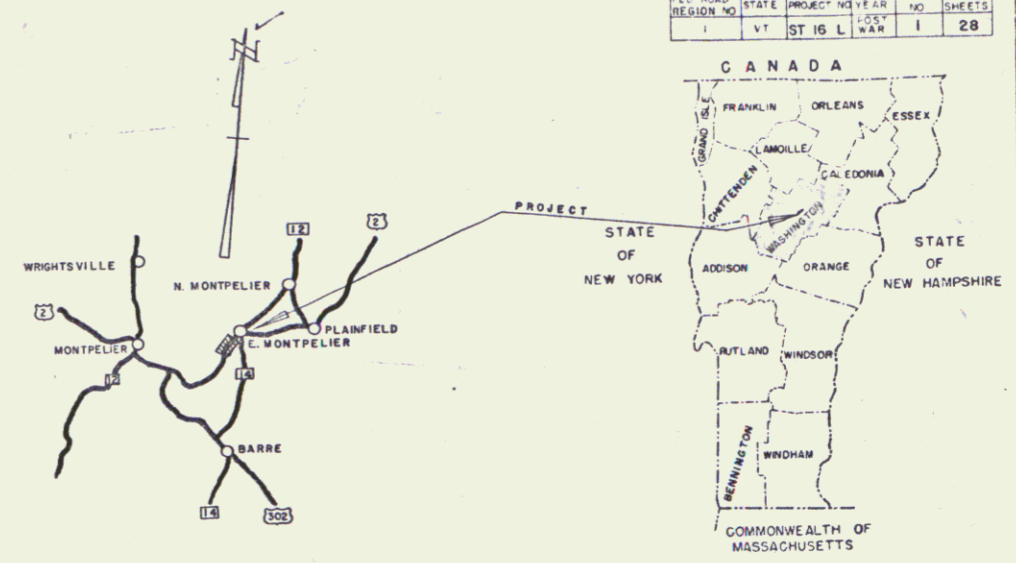
INDEX OF SHEETS

SHEET NO.	TITLE PAGE
1	TITLE PAGE
2	TYPICAL CROSS SECTION OF IMPROVEMENT <small>SINGLE TRACK COAT OF REFINED TAR AND BLADE, 1/2" PEA STONE SEAL, WHITE SUPPORT, ASPHALT TYPING, 1/2" AND BITUMINOUS CONCRETE</small>
3	QUANTITY SHEET - ITEMS
4	EARTHWORK SHEET
5-6	PLAN AND PROFILE SHEETS
7	DETAIL SHEET - 11'-6" X 96' C.G.M.P. PIPE - STA. 217 +13
8	STANDARD STRUCTURE SHEET RS 56-1 BANKING
9	STANDARD STRUCTURE SHEET RS 56-3 BOUNDARY MARKERS
10	STANDARD STRUCTURE SHEET RS 56-4 UNDERDRAIN
11	STANDARD STRUCTURE SHEET RS 56-6 SLOPES AND TURNOUTS
12	STANDARD STRUCTURE SHEET RS 56-11 GUARD RAIL
13	STANDARD STRUCTURE SHEET RS 56-12 BARRICADES, SIGNS, & LIGHTS
14-23	CROSS SECTIONS
24-28	CHANNEL SECTIONS

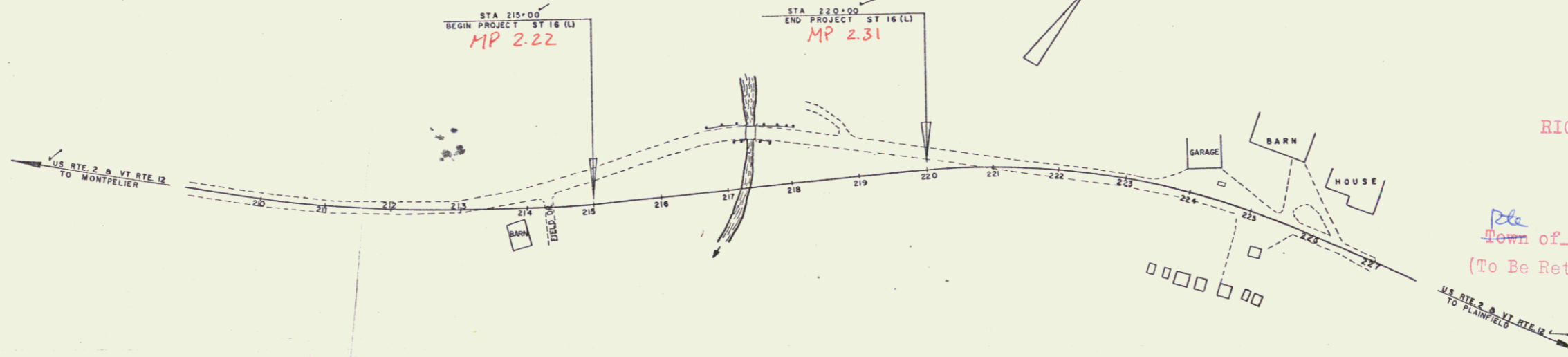
STATE OF VERMONT  
DEPARTMENT OF HIGHWAYS  
**PROPOSED IMPROVEMENT**

**TOWN OF EAST MONTPELIER**  
COUNTY OF WASHINGTON  
**US ROUTE 2** *Pin # 99R119*  
**MONTPELIER-PLAINFIELD ROAD**

BEGINNING AT A POINT ON U.S. ROUTE 2, 2713 FT. WESTERLY OF THE INTERSECTION OF ROUTES U.S. 2 AND VT. RTE. 14 IN THE HAMLET OF EAST MONTPELIER, AND EXTENDING EASTERLY 500 FEET  
LENGTH OF PROJECT 500 FEET = 0.094 MILES



EAST MONTPELIER ST 16 (L)	TYPE	PAVEMENT AREA
	BITUMINOUS CONCRETE	6.99 SQ.
RECORD PLANS		
MATERIALS		
SUB-BASE OF GRAVEL	CALEDONIA SAND & GRAVEL CO. INC. PLAINFIELD, VERMONT	NORTHEASTERN CULVERT CORP. WESTMINSTER, VERMONT
SUB-BASE OF SAND	DITTO	REPUBLIC STEEL CORP. CLEVELAND, OHIO
REFINED TAR	LOPPER PRODUCTS CO. EVERETT, MASS.	CABLE FOR GRAIL AMERICAN STEEL WIRE CO. NEW HAVEN, CONN.
BITUMINOUS CONCRETE	CALCO, INC. PLAINFIELD, VT.	PACOM UNIFORMAL NORTHEASTERN CULVERT CORP. WESTMINSTER, VERMONT
CONTRACTOR	CALEDONIA SAND & GRAVEL CO. INC.	CONTRACT DATED
RESIDENT ENGINEER	H. A. HEALD	CONTRACT STARTED
INSPECTOR	H. MILES C. HELEFRICH	CONTRACT COMPLETED
RECORD PLANS	H. A. HEALD	CONTRACT ACCEPTED



RIGHT-OF-WAY DIVISION  
TOWN FILE  
PERPETUAL  
Town of US 2  
(To Be Returned To R.O.W. Division)

COUNTY: TOWN: FENCE: STONE: UNFEN: GUARD: TRAVE: RAILRI: RETAI: CENVE: SURVE: CULVEI: DROP: TROLL: POWER: TELEP: TREES: HEISE:

PROJECT: East Montpelier  
LENGTH: 0.094 MI.  
TITLE: Bituminous Concrete  
CONTRACTOR: Caledonia Sand and Gravel Co., Inc.  
LOCATION: Beginning at a point on Route 2, 2713 feet west of the intersection of Routes U.S. 2 and VT. RTE. 14 in the hamlet of East Montpelier and extending easterly 500 feet.  
EAST MONTPELIER, VERMONT  
RECORD PLANS: H. A. HEALD  
CONSTR. COMPLETED: AUGUST 13, 1959

GROUND ELEVATION	DATUM	UNIT
GRADE ELEVATION	DATUM	FEET

CURVE DATA	DEFLECTION OF ANGLE	DEGREE OF CURVE	RADIUS OF CURVE	TANGENT DISTANCE	LENGTH OF CURVE	EXTERNAL DISTANCE	POINT OF INTERSECTION	POINT OF CURVE	POINT OF TANGENT	POINT ON TANGENT	POINT ON SUB-TANGENT
DELTA	D	R	T	L	E	PI	PC	PT	POT	POST	

APPROVED	APPROVED	APPROVED	APPROVED	APPROVED
SECONDARY ENGINEER	CONSTRUCTION ENGINEER	BRIDGE ENGINEER	DISTRICT ENGINEER	HIGHWAY ENGINEER
DATE	DATE	DATE	DATE	DATE

DEPARTMENT OF COMMERCE BUREAU OF PUBLIC ROADS	
APPROVED	DATE
DIVISION ENGINEER	DATE
PROJECT	NO.
ST 16 (L)	16 (L)
SHEET	OF 28 SHEETS
1	28

THESE PLANS ARE SUBJECT TO SUCH REVISIONS AS MAY BE REQUIRED BY THE BUREAU OF PUBLIC ROADS OR THE COMMISSIONER OF HIGHWAYS.  
CONSTRUCTION IS TO BE CARRIED ON IN ACCORDANCE WITH THE PLANS AND THE STANDARD SPECIFICATIONS FOR HIGHWAY AND BRIDGE CONSTRUCTION OF JANUARY 1956 SUBMITTED TO THE BUREAU OF PUBLIC ROADS AS APPROVED JULY 5, 1956, INCLUDING ALL SUBSEQUENT APPROVED REVISIONS AND SUCH REVISED SPECIFICATIONS AND SPECIAL PROVISIONS AS ARE SUBMITTED WITH THE PLANS.