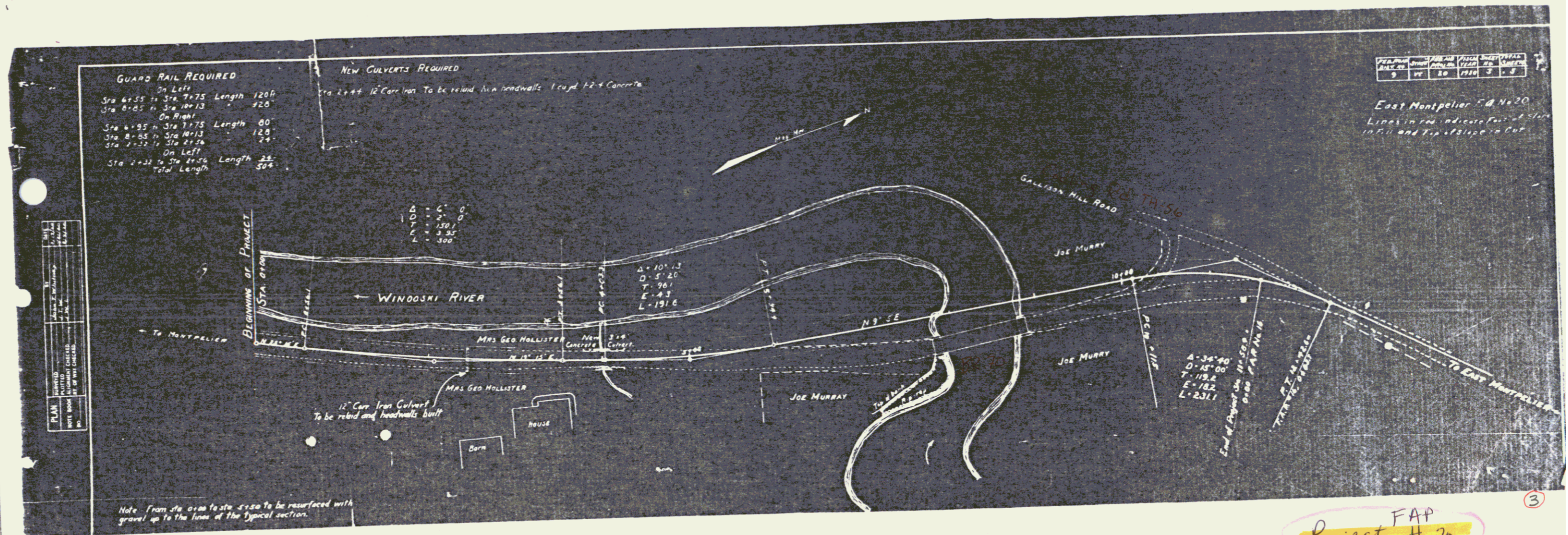
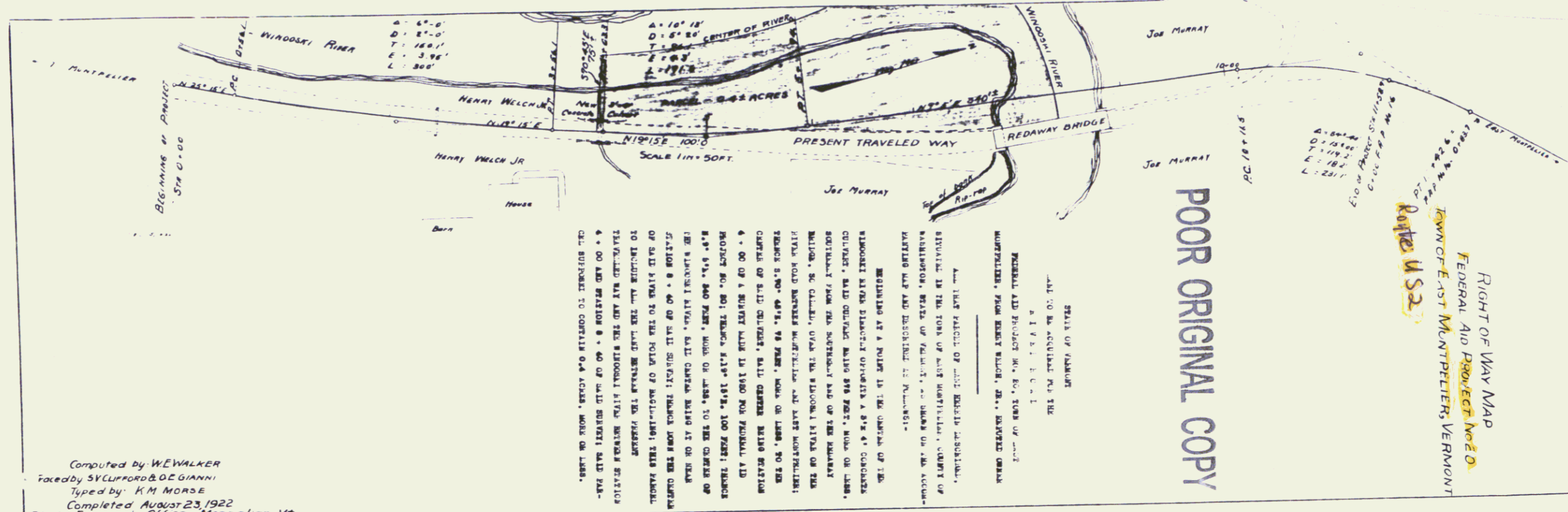


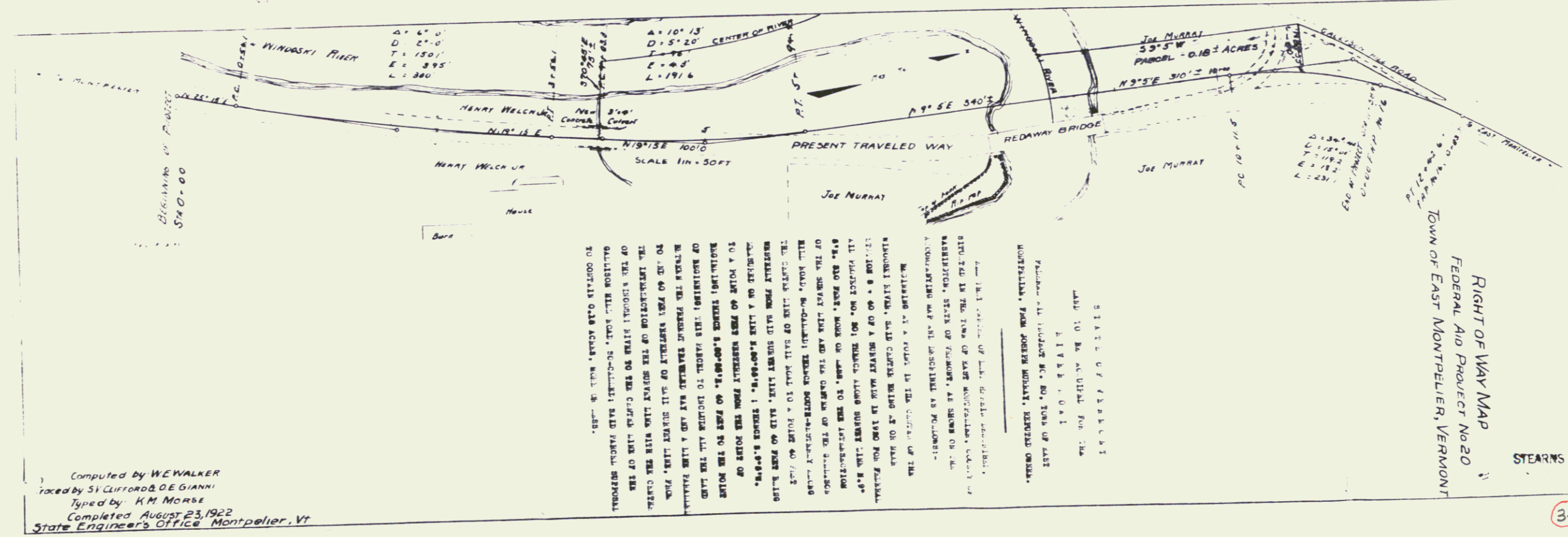
POOR ORIGINAL COPY



Project #20  
 Town of East Montpelier  
 US Route #2  
 Pin # 99E118  
 STEARNS R. JENKINS US2  
 8/27/22



Computed by W.E. WALKER  
 Traced by SYLVESTER & DE GIANNI  
 Typed by K.M. MORSE  
 Completed August 23, 1922  
 State Engineer's Office, Montpelier, Vt.



Computed by W.E. WALKER  
 Traced by SYLVESTER & DE GIANNI  
 Typed by K.M. MORSE  
 Completed August 23, 1922  
 State Engineer's Office, Montpelier, Vt.

STEARNS R. JENNINGS  
 (3A)