

INDEX OF SHEETS

SHEET NO.	TITLE PAGE
1	TITLE PAGE
2	TYPICAL CROSS SECTIONS OF IMPROVEMENT (BITUMINOUS CONCRETE PAVEMENT, ITEM 261-B MOD.)
3	QUANTITY SHEET (ITEMS)
4	ITEM DETAIL AND DRAINAGE SHEET
5-8	EARTHWORK SHEETS
9-21	PLAN AND PROFILE SHEETS
22	4'-0" DIAM. ACCURATE AT STA. 76+83.6 ML B STA 2+04.63 SL.
23	10' DIAM. CGMP PIPE ARCH AT STA. 130+29
24	7'-11" X 12'-6" CGMP PIPE ARCH AT STA. 132+50
25	A-61 (DRILLING AND BLASTING)
26	B-1 (BANKING TABLES)
27	B-5 (TYPICAL SLOPE GRADINGS)
28	B-6 (MUCK EXCAVATION)
29	B-7 (EMBANKMENT IN FILL SECTIONS)
30	B-12 (SIDE ROAD INTERSECTION)
31	D-1 (DRIVE INTERSECTION)
32	C-1 (C & M HEADWALLS)
33	E-1 (BARRICADES, GULLIES & TIE-UPS)
34	3-4 (STEEL MARKER GUARD RAIL WITH STEEL POSTS)
35	3-5 (STEEL MARKER GUARD RAIL WITH PLANK GUARD RAIL)
36	3-6 (STEEL MARKER GUARD RAIL WITH PLANK GUARD RAIL)
37	3-7 (STEEL MARKER GUARD RAIL WITH PLANK GUARD RAIL)
38	3-8 (STEEL MARKER GUARD RAIL WITH PLANK GUARD RAIL)
39	3-9 (STEEL MARKER GUARD RAIL WITH PLANK GUARD RAIL)
40	3-10 (STEEL MARKER GUARD RAIL WITH PLANK GUARD RAIL)
41	3-11 (STEEL MARKER GUARD RAIL WITH PLANK GUARD RAIL)
42	3-12 (STEEL MARKER GUARD RAIL WITH PLANK GUARD RAIL)
43	3-13 (STEEL MARKER GUARD RAIL WITH PLANK GUARD RAIL)
44	3-14 (STEEL MARKER GUARD RAIL WITH PLANK GUARD RAIL)
45	3-15 (STEEL MARKER GUARD RAIL WITH PLANK GUARD RAIL)
46	3-16 (STEEL MARKER GUARD RAIL WITH PLANK GUARD RAIL)
47	3-17 (STEEL MARKER GUARD RAIL WITH PLANK GUARD RAIL)
48	3-18 (STEEL MARKER GUARD RAIL WITH PLANK GUARD RAIL)
49	3-19 (STEEL MARKER GUARD RAIL WITH PLANK GUARD RAIL)
50	3-20 (STEEL MARKER GUARD RAIL WITH PLANK GUARD RAIL)
51	3-21 (STEEL MARKER GUARD RAIL WITH PLANK GUARD RAIL)
52	3-22 (STEEL MARKER GUARD RAIL WITH PLANK GUARD RAIL)
53	3-23 (STEEL MARKER GUARD RAIL WITH PLANK GUARD RAIL)
54	3-24 (STEEL MARKER GUARD RAIL WITH PLANK GUARD RAIL)
55	3-25 (STEEL MARKER GUARD RAIL WITH PLANK GUARD RAIL)
56	3-26 (STEEL MARKER GUARD RAIL WITH PLANK GUARD RAIL)
57	3-27 (STEEL MARKER GUARD RAIL WITH PLANK GUARD RAIL)
58	3-28 (STEEL MARKER GUARD RAIL WITH PLANK GUARD RAIL)
59	3-29 (STEEL MARKER GUARD RAIL WITH PLANK GUARD RAIL)
60	3-30 (STEEL MARKER GUARD RAIL WITH PLANK GUARD RAIL)
61	3-31 (STEEL MARKER GUARD RAIL WITH PLANK GUARD RAIL)
62	3-32 (STEEL MARKER GUARD RAIL WITH PLANK GUARD RAIL)
63	3-33 (STEEL MARKER GUARD RAIL WITH PLANK GUARD RAIL)
64	3-34 (STEEL MARKER GUARD RAIL WITH PLANK GUARD RAIL)
65	3-35 (STEEL MARKER GUARD RAIL WITH PLANK GUARD RAIL)
66	3-36 (STEEL MARKER GUARD RAIL WITH PLANK GUARD RAIL)
67	3-37 (STEEL MARKER GUARD RAIL WITH PLANK GUARD RAIL)
68	3-38 (STEEL MARKER GUARD RAIL WITH PLANK GUARD RAIL)
69	3-39 (STEEL MARKER GUARD RAIL WITH PLANK GUARD RAIL)
70	3-40 (STEEL MARKER GUARD RAIL WITH PLANK GUARD RAIL)
71	3-41 (STEEL MARKER GUARD RAIL WITH PLANK GUARD RAIL)
72	3-42 (STEEL MARKER GUARD RAIL WITH PLANK GUARD RAIL)
73	3-43 (STEEL MARKER GUARD RAIL WITH PLANK GUARD RAIL)
74	3-44 (STEEL MARKER GUARD RAIL WITH PLANK GUARD RAIL)
75	3-45 (STEEL MARKER GUARD RAIL WITH PLANK GUARD RAIL)
76	3-46 (STEEL MARKER GUARD RAIL WITH PLANK GUARD RAIL)
77	3-47 (STEEL MARKER GUARD RAIL WITH PLANK GUARD RAIL)
78	3-48 (STEEL MARKER GUARD RAIL WITH PLANK GUARD RAIL)
79	3-49 (STEEL MARKER GUARD RAIL WITH PLANK GUARD RAIL)
80	3-50 (STEEL MARKER GUARD RAIL WITH PLANK GUARD RAIL)

STATE OF VERMONT
DEPARTMENT OF HIGHWAYS

PROPOSED IMPROVEMENT

FEDERAL AID
PRIMARY PROJECT

**TOWNS OF BERLIN-
BARRE - E. MONTPELIER**

COUNTY OF WASHINGTON

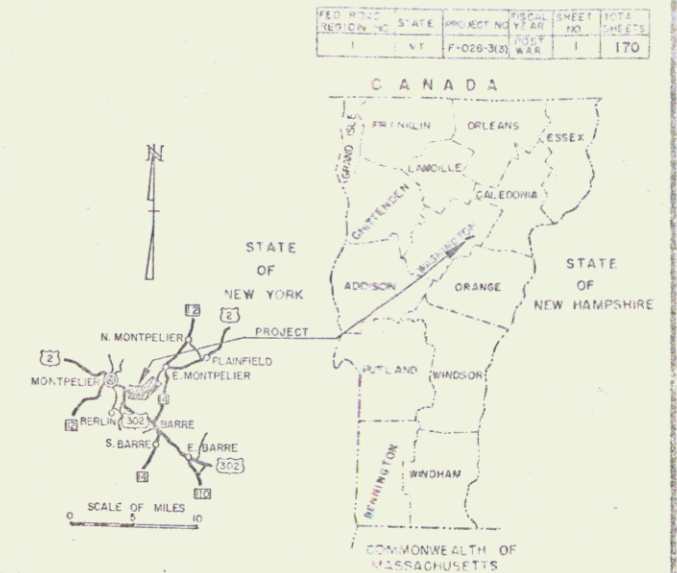
US ROUTE 2

MONTPELIER - E. MONTPELIER ROAD

BEGINNING AT A POINT 3,700 FEET EAST OF THE
MONTPELIER CITY-BERLIN TOWN LINE AND EXTENDING
EASTERLY 12,053.4 FEET

LENGTH OF ROADWAY 12,053.4 FT = 2.283 MILES

LENGTH OF PROJECT 12,053.4 FT = 2.283 MILES



PROJECT NAME & NUMBER	TYPE	PAVEMENT AREA
BERLIN-BARRE-E. MONTPELIER	BITUMINOUS CONCRETE	32,142 S.Y.
F-028-3(3)	RECORD PLANS	
MATERIALS		
SUBBASE OF GRAVEL-LE PAGE PIT - BARRE, VERMONT.		
SUBBASE OF SAND, CRUSHED GRAVEL-CALEDONIA SAND & GRAVEL INC. - PLAINFIELD, VERMONT.		
PEA STONE FOR SEAL STONE GRITS & CRUSHED STONE BASE COURSE - WELLS LAMSON QUARRY CO. - BARRE, VERMONT.		
REFINED TAR - KOPPERS CO. - PORTLAND, MAINE.		
PENETRATION ASPHALT, CUTBACK ASPHALT-SHELL OIL CO.-PORTLAND, MAINE.		
REINFORCED CONCRETE PIPE-AMERICAN MARIETTA CO.-WINDSOR, VERMONT.		
ASPHALT COATED CORRUGATED GALVANIZED METAL PIPE - NORTH EASTERN GULF VERT CORP. - WESTMINSTER, VERMONT.		
CORRUGATED GALVANIZED METAL PLATE PIPE-REPUBLIC STEEL-YOUNGSTOWN, OHIO.		
CABLE FOR GUARD RAIL-PAULSEN-WEBBER CORRUGATED CORRUGATED STEEL POSTS - MAINE LINE FENCE CO. - WESTBROOK, MAINE.		
CONTRACTOR - W.H. HINMAN INC. WESTBROOK, MAINE.	CONTRACT - DATED - AUGUST 11, 1960.	
RES. ENGINEER - HOBART A. HEALD.	STARTED - AUGUST 16, 1960.	
INSPECTOR - MARK W. REDMOND.	COMPLETED - OCTOBER 27, 1961.	
RECORD PLANS - HOBART A. HEALD.	ACCEPTED - OCTOBER 27, 1961.	

BERLIN-EAST MONTPELIER, F-028-3(3)
CONTRACTOR - W.H. HINMAN INC., WESTBROOK, ME.
RECORD PLANS - HOBART A. HEALD
CONST. COMPLETED - OCTOBER 27, 1961.



Pin# 99R 117

RIGHT-OF-WAY DIVISION
TOWN FILE
PERPETUAL
Town of US 2
(To Be Returned To R.O.W. Division)

SCALES

TITLE	1" = 800'
TYPICAL	1" = 24'
PLAN	1" = 50'
PROFILE HORIZONTAL	1" = 50'
PROFILE VERTICAL	1" = 10'
GROSS SECTIONS	1" = 5' @ 10'

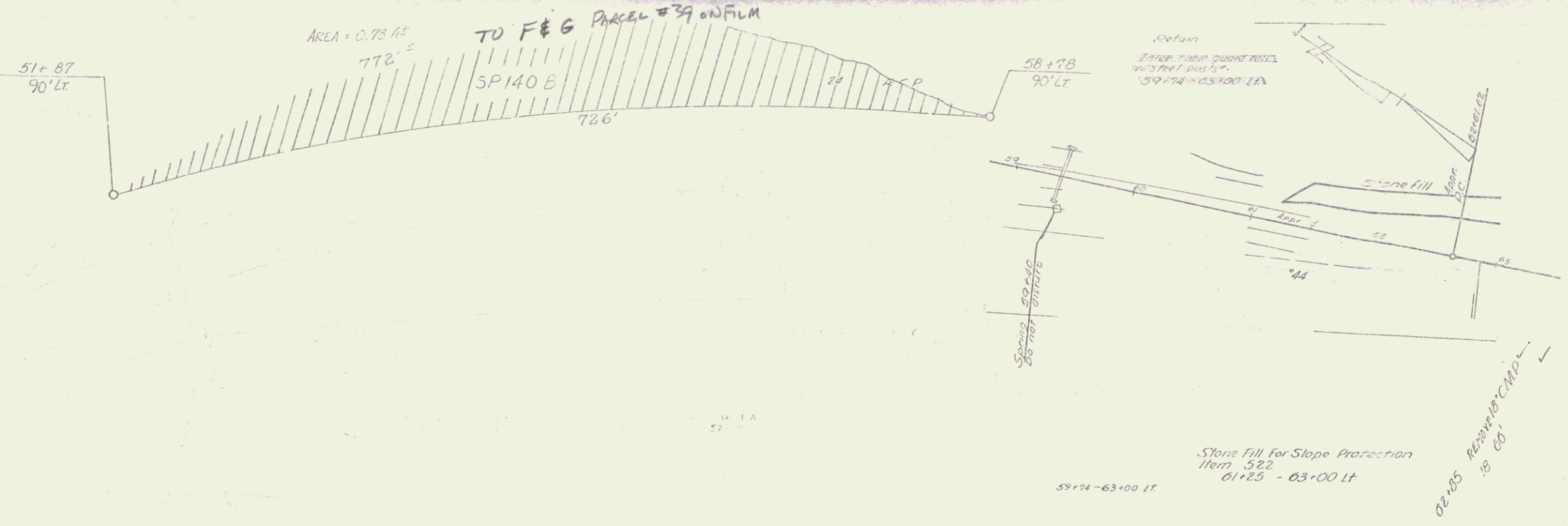
APPROVED	APPROVED	APPROVED	APPROVED	APPROVED	APPROVED
RECORD ENGINEER	ENGINEER	ENGINEER	ENGINEER	ENGINEER	ENGINEER
DATE	DATE	DATE	DATE	DATE	DATE
	2/11/59	2/11/59	Jan 23, 1959	Feb 19, 1959	2/19/1959

NOTE: ANY INFORMATION CONCERNING THIS PROJECT SHOULD BE REFERRED TO THE RECORD PLANS AND SPECIFICATIONS AND SPECIAL PROVISIONS AS ARE SUBMITTED WITH THE PLANS.

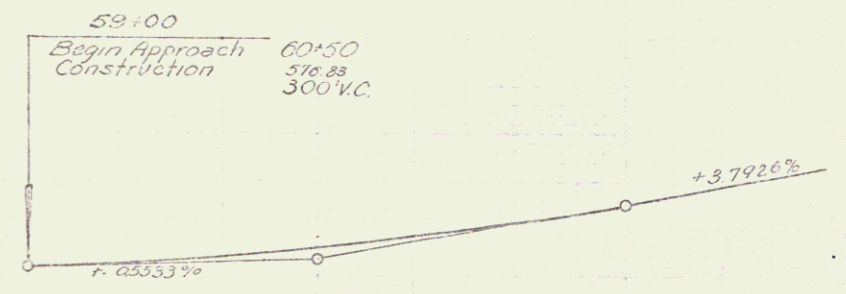
THESE PLANS ARE SUBJECT TO SUCH REVISIONS AS MAY BE REQUIRED BY THE BUREAU OF PUBLIC ROADS OR THE COMMISSIONER OF HIGHWAYS.

CONSTRUCTION IS TO BE CARRIED ON IN ACCORDANCE WITH THE PLANS AND THE STANDARD SPECIFICATIONS FOR HIGHWAY AND BRIDGE CONSTRUCTION OF JANUARY 1956 SUBMITTED TO THE BUREAU OF PUBLIC ROADS AS APPROVED JULY 5, 1956, INCLUDING ALL SUBSEQUENT APPROVED REVISIONS AND SUCH REVISED SPECIFICATIONS AND SPECIAL PROVISIONS AS ARE SUBMITTED WITH THE PLANS.

DEPARTMENT OF COMMERCE BUREAU OF PUBLIC ROADS	
APPROVED	DATE
PROJECT	NO.
F	028-3(3)
SHEET	1 OF 171 SHEETS



POOR ORIGINAL COPY



64+00 to 73+00

COND. 8/11/59
REC. BERLIN BK 33-PG 432-B/1/59

Winooski River

COND. 8/11/59
REC. BERLIN BK 33-PG 417-8/21/59

COND. 8/11/59
REC. SEE SB

Appr. Pt. 66+28.97 = 66+12.35

Sta 64+00
Begin Project F028-3(A)

64+00
End Approach Construction

DEMOLITION AND REMOVAL OF BUILDING
Excavation & Removal of Road Surface on Roadways from 118-A
60+75 - 79+00 LT

B.M. 46-6-2
S.I.R. 12 ASH
EL. 596.00

REV. P.O.T. 72+77.6

CONSTRUCT DRIVE

54+20 RT
54+75 LT
58+50 RT
78+30 LT

S 51° 26' 40" E

REV. P.O.T. 73+20.1

COND. 8/11/59
REC. SEE #68

WES-ADRIAN & CAMILIA DION
SLOPE RIGHTS
STA 76+00-8+00 S.L.
W.D.O.E. 11/15/60
REC. BERLIN BK 34-PG 198
11/19/60

CHANNEL RIGHTS STA 75+50-76+45 LT.
COND. 8/11/59
REC. SEE #60

POOR ORIGINAL COPY

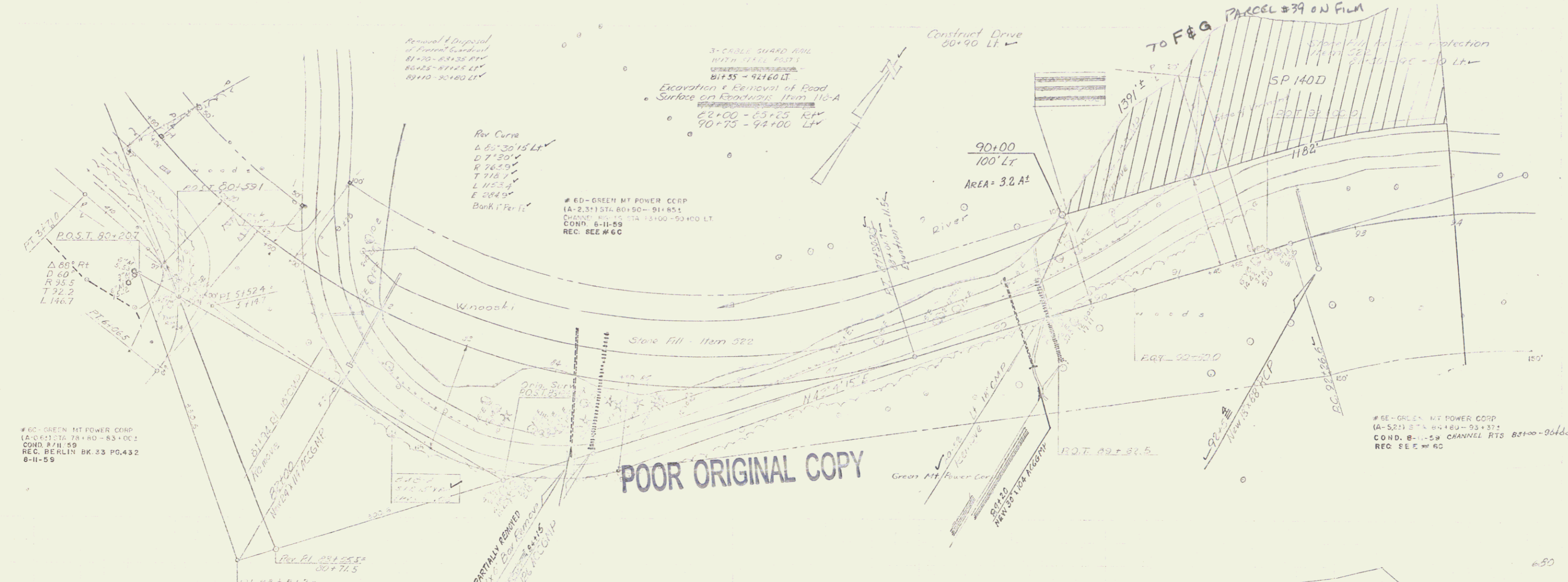
SSD. 494'

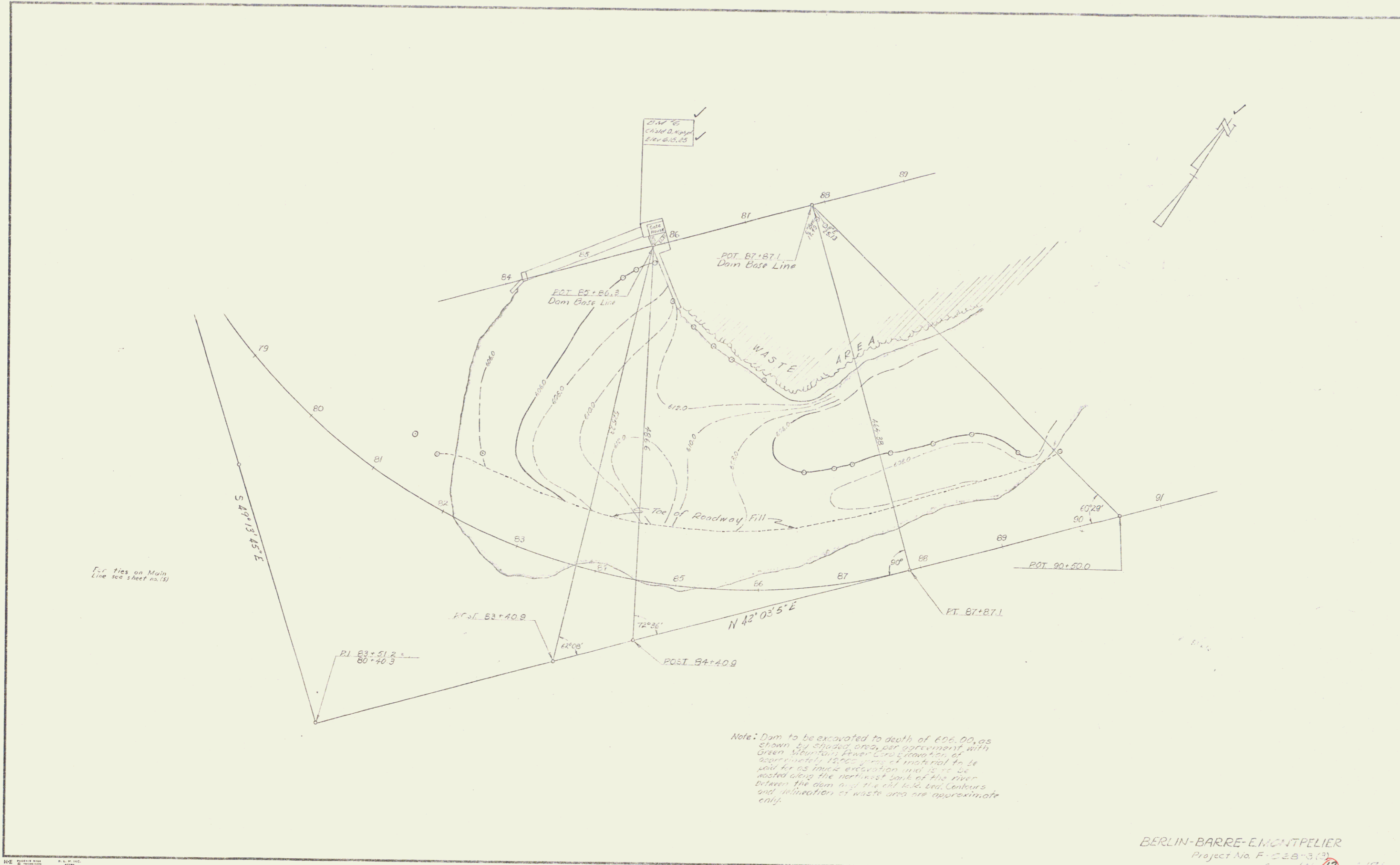
BERLIN-ENGINEERING

10 171

3

4-58
1/2" = 100'

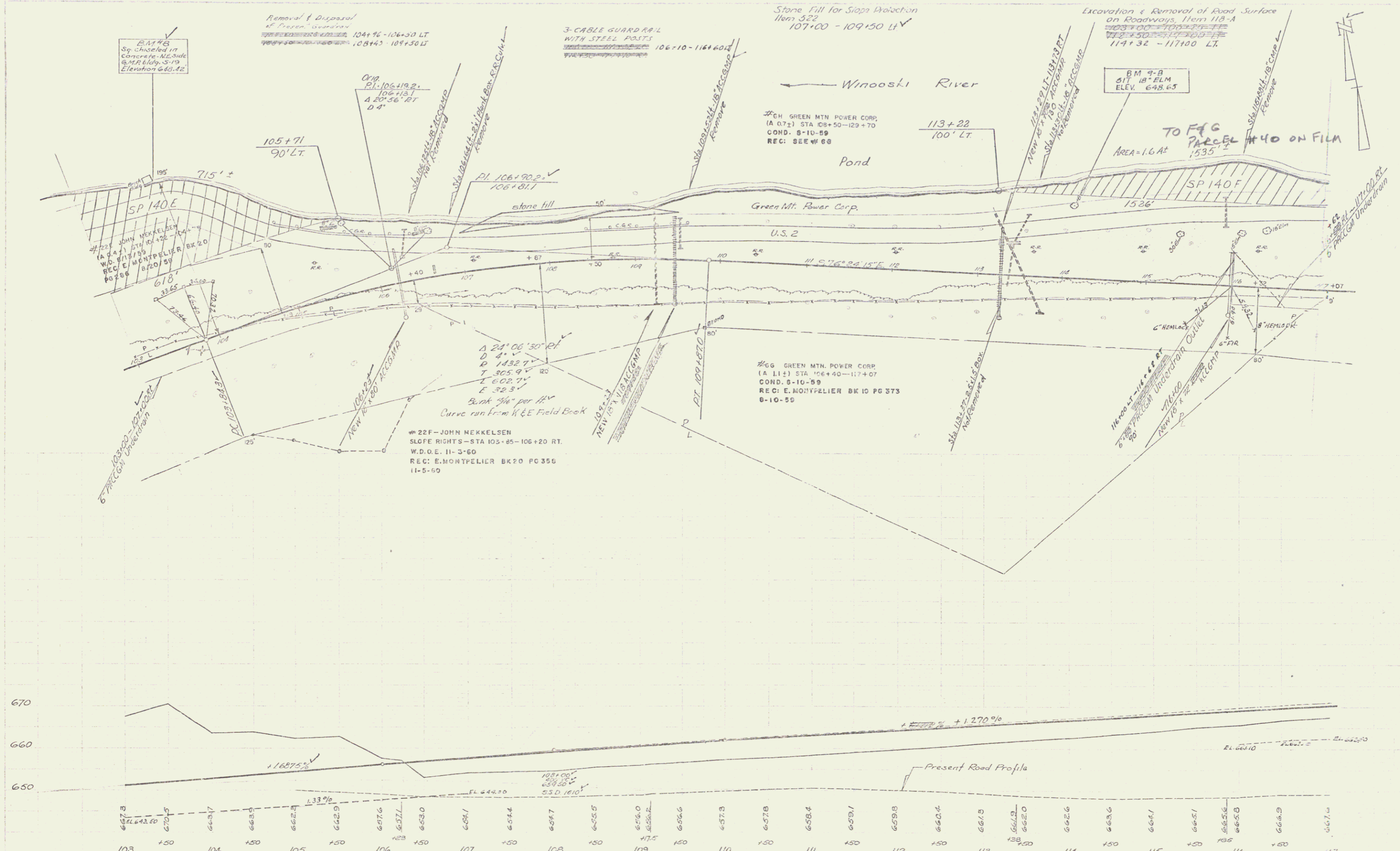




F.C. ties on Main Line see sheet no. 15

Note: Dam to be excavated to depth of 606.00, as shown by contours, per agreement with Green Mountain River, Ltd. approximately 12,000 cu yds of material to be used for its bank excavation and to be wasted along the nearest bank of the river between the dam and the old lake bed. Contours and delineation of waste area are approximate only.

BERLIN-BARRE-MONTPELIER
 Project No. F-288-3(3)
 Sheet No. 12 of 17

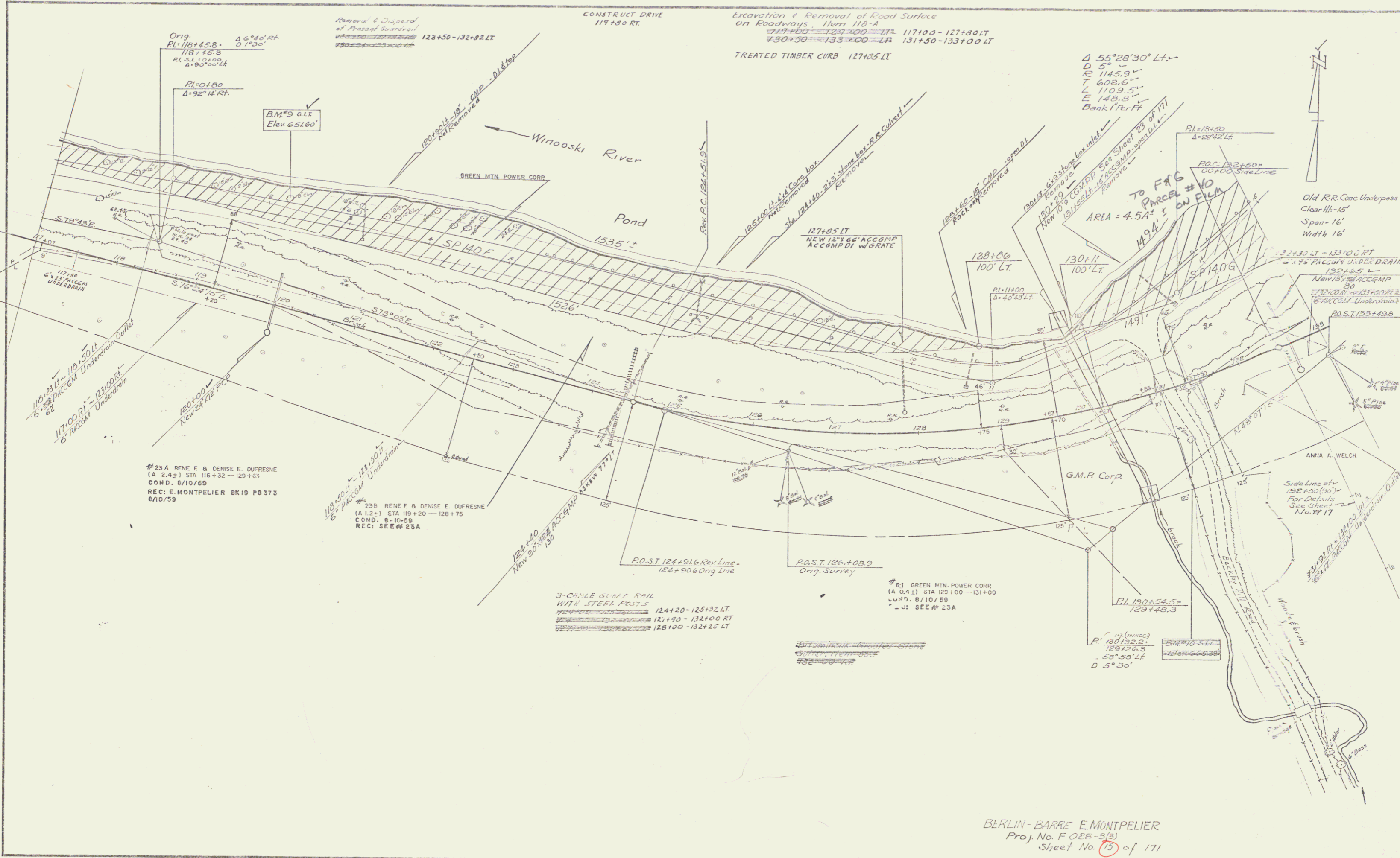


Standard Email

Library Copy

BERLIN - GREEN MOUNTAIN POWER CORP.
 Proj. F023-33
 Sheet 14 of 171

7



Orig
 PI=118+65.8
 Δ 6°40' RT
 D 1730'
 118+42.3
 R.L.S. 12499.4
 Δ 90°00' LT

PI=120+180
 Δ 92°14' RT

B.M. 9 G.I.T.
 Elev 651.60'

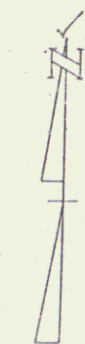
Removal & Disposal
 of Road Surface
 128+50 - 132+82 LT

CONSTRUCT DRIVE
 117+80 RT

Excavation & Removal of Road Surface
 on Roadways Item 118-A
 117+00 - 127+80 LT
 128+50 - 133+00 LT
 131+50 - 133+00 LT

TREATED TIMBER CURB 127+85 LT

Δ 55°28'30" LT
 D 57'
 R 1145.9
 T 602.6
 L 1109.5
 E 148.8
 Bank 1 Per FF



Old R.R. Conc Underpass
 Clear Ht - 15'
 Span - 16'
 Width 16'

#23A RENE F & DENISE E. DUFRESNE
 (A 24±) STA 116+32 - 129+64
 COND. 6/10/69
 REC. E. MONTPELIER BKID P0373
 6/10/69

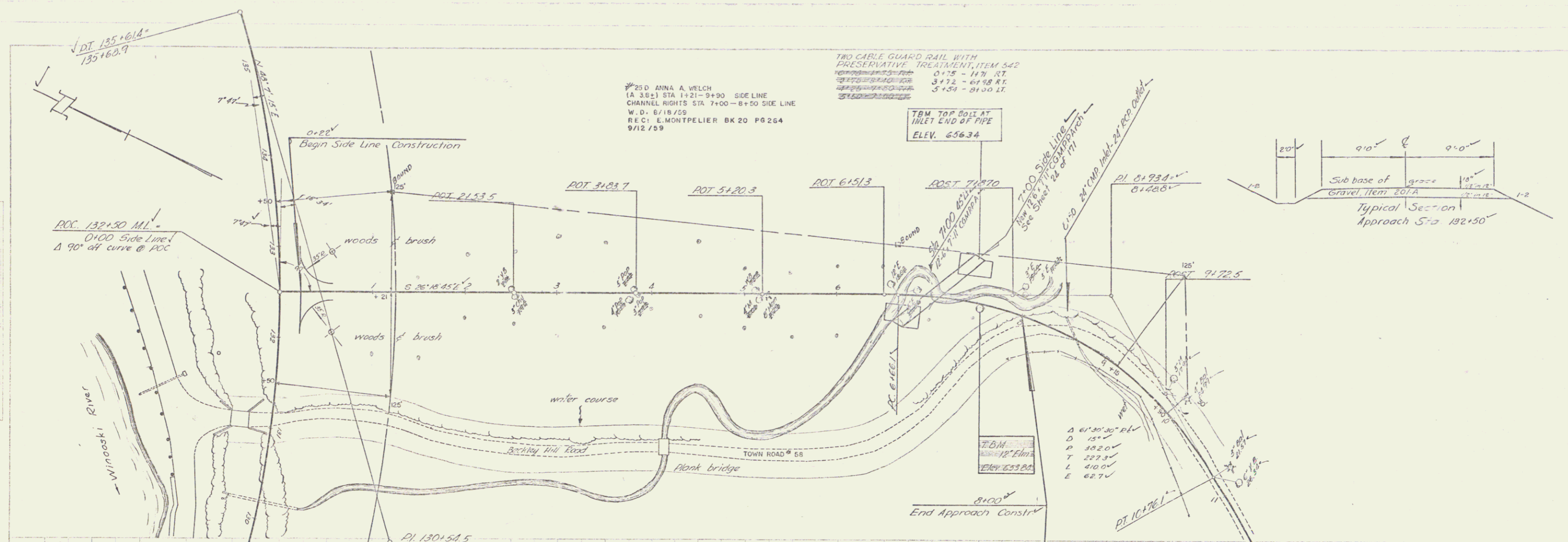
#23B RENE F & DENISE E. DUFRESNE
 (A 12±) STA 119+20 - 128+75
 COND. 8-10-69
 REC. SEE #23A

3-CABLE GUNT RAIL
 WITH STEEL POSTS
 124+20 - 125+32 LT
 121+90 - 132+00 RT
 128+00 - 132+15 LT

GREEN MTLN POWER CORR
 (A 0.4±) STA 129+00 - 131+00
 COND. 8/10/69
 REC. SEE #23A

PI 130+54.5
 129+48.3

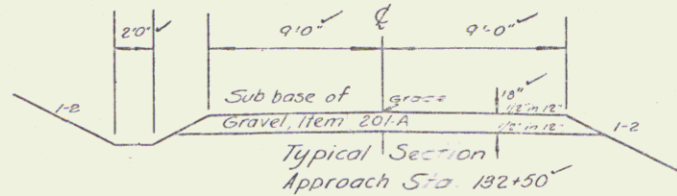
BERLIN - BARRE E. MONTPELIER
 Proj. No. F 028-3(3)
 Sheet No. 15 of 171



25 D ANNA A. WELCH
 (A 3.6L) STA 1+21-9+90 SIDE LINE
 CHANNEL RIGHTS STA 7+00-8+50 SIDE LINE
 W.D. 8/18/55
 REC: E.MONTPELIER BK 20 P 264
 9/12/59

TWO CABLE GUARD RAIL WITH
 PRESERVATIVE TREATMENT, ITEM 542
 0+75 - 1+70 RT
 3+72 - 6+98 RT
 5+59 - 21+00 LT

TBM TOP BOLT AT
 INLET END OF PIPE
 ELEV. 656.34

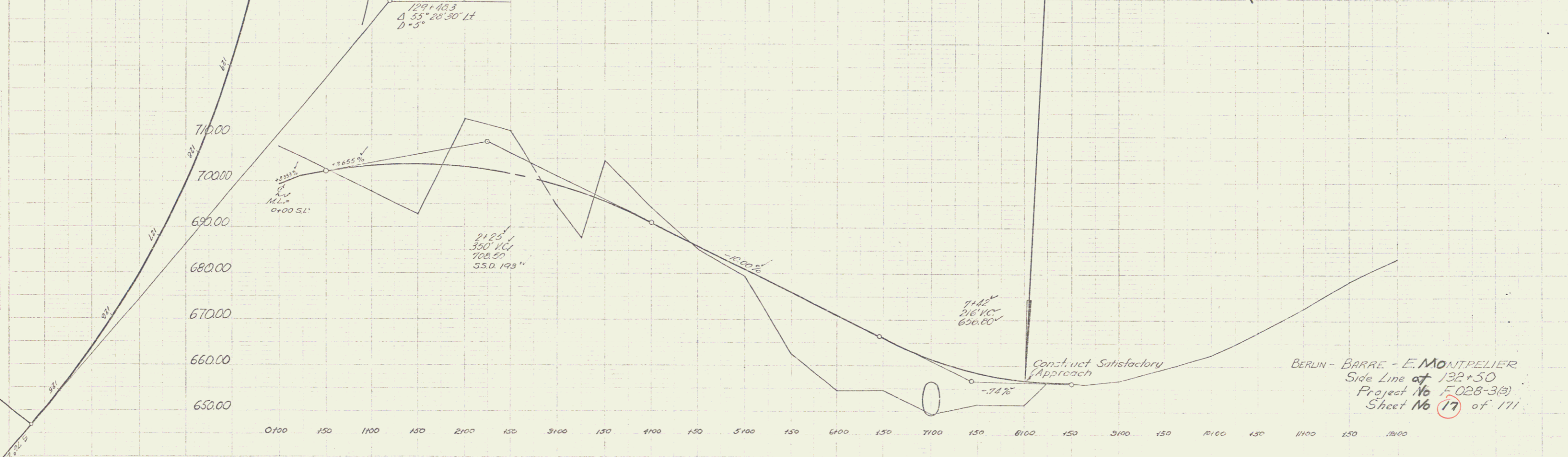


POC 132+50 M.L.
 0+00 Side Line
 $\Delta 90^\circ$ at curve @ POC

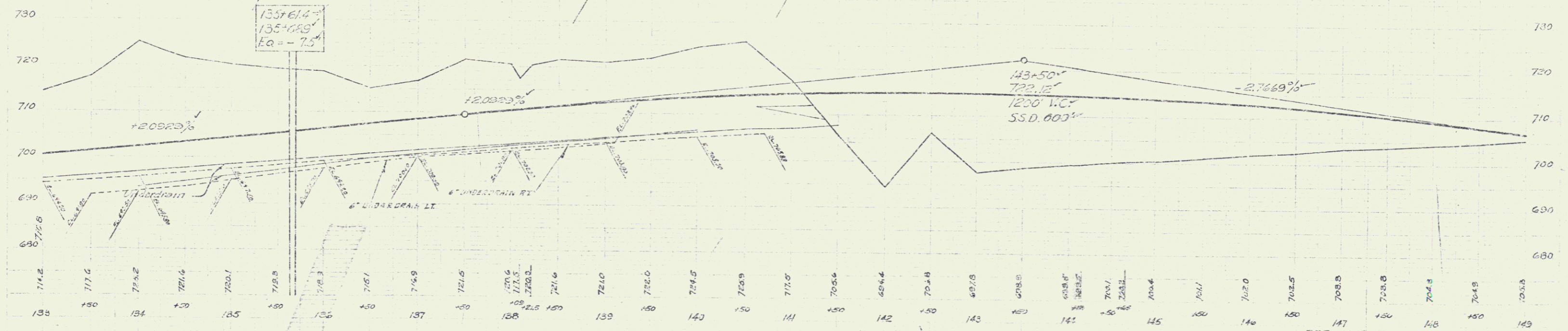
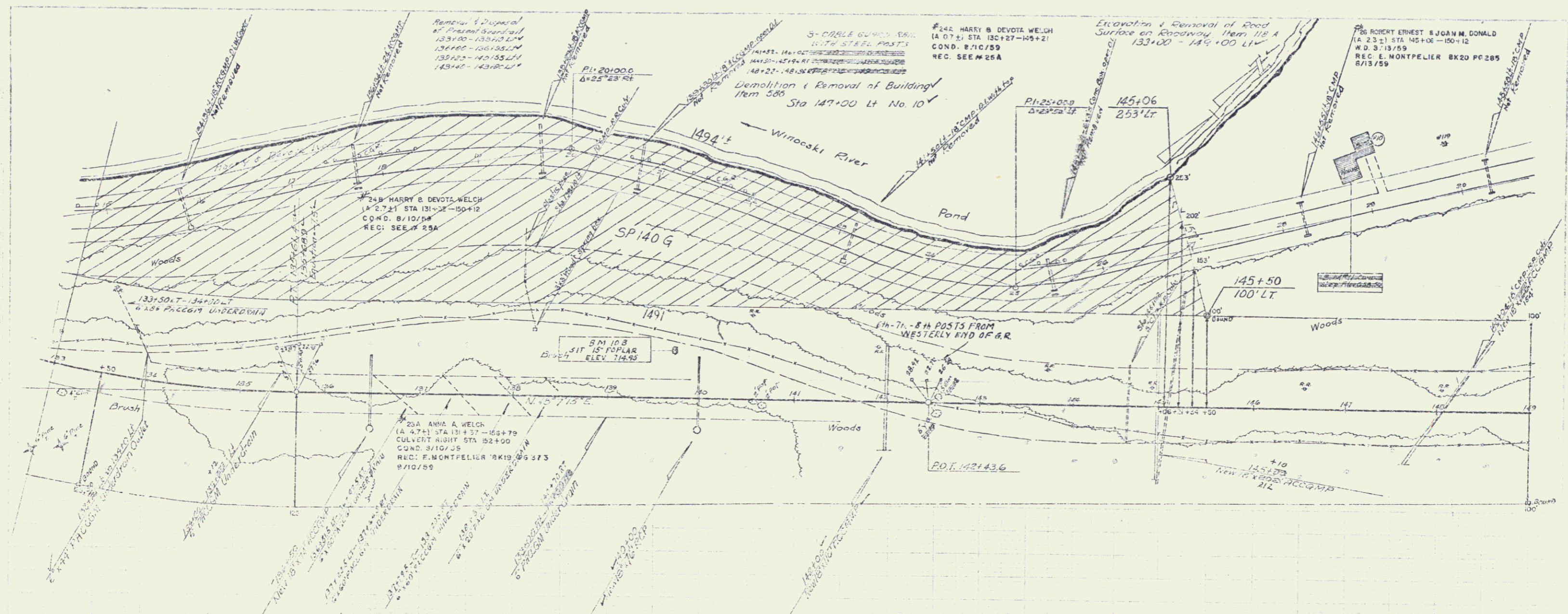
PI 1301.585
 129+48.3
 $\Delta 55^\circ 28' 30''$ LT
 D = 5'

$\Delta 61^\circ 30' 30''$ RL
 D 15'
 P 382.0'
 T 227.3'
 L 410.0'
 E 62.7'

8+00
 End Approach Const.



BERLIN - BARRE - E. MONTPELIER
 Side Line at 132+50
 Project No. F-028-3(2)
 Sheet No. 17 of 171

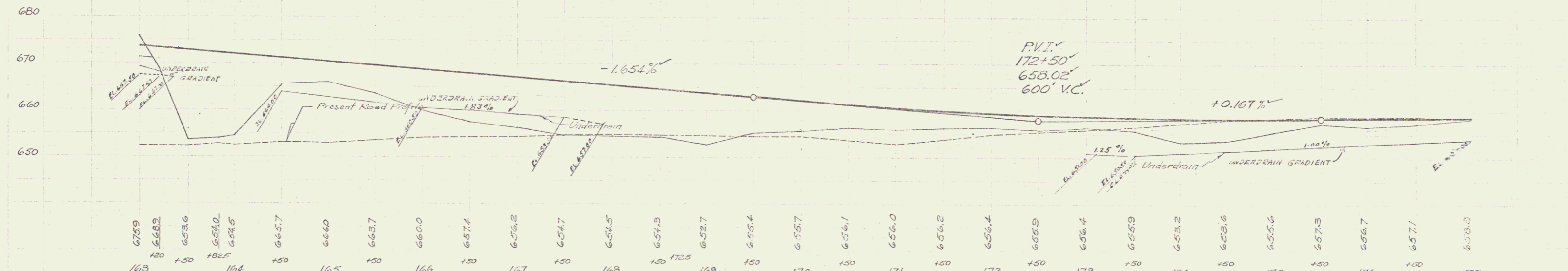
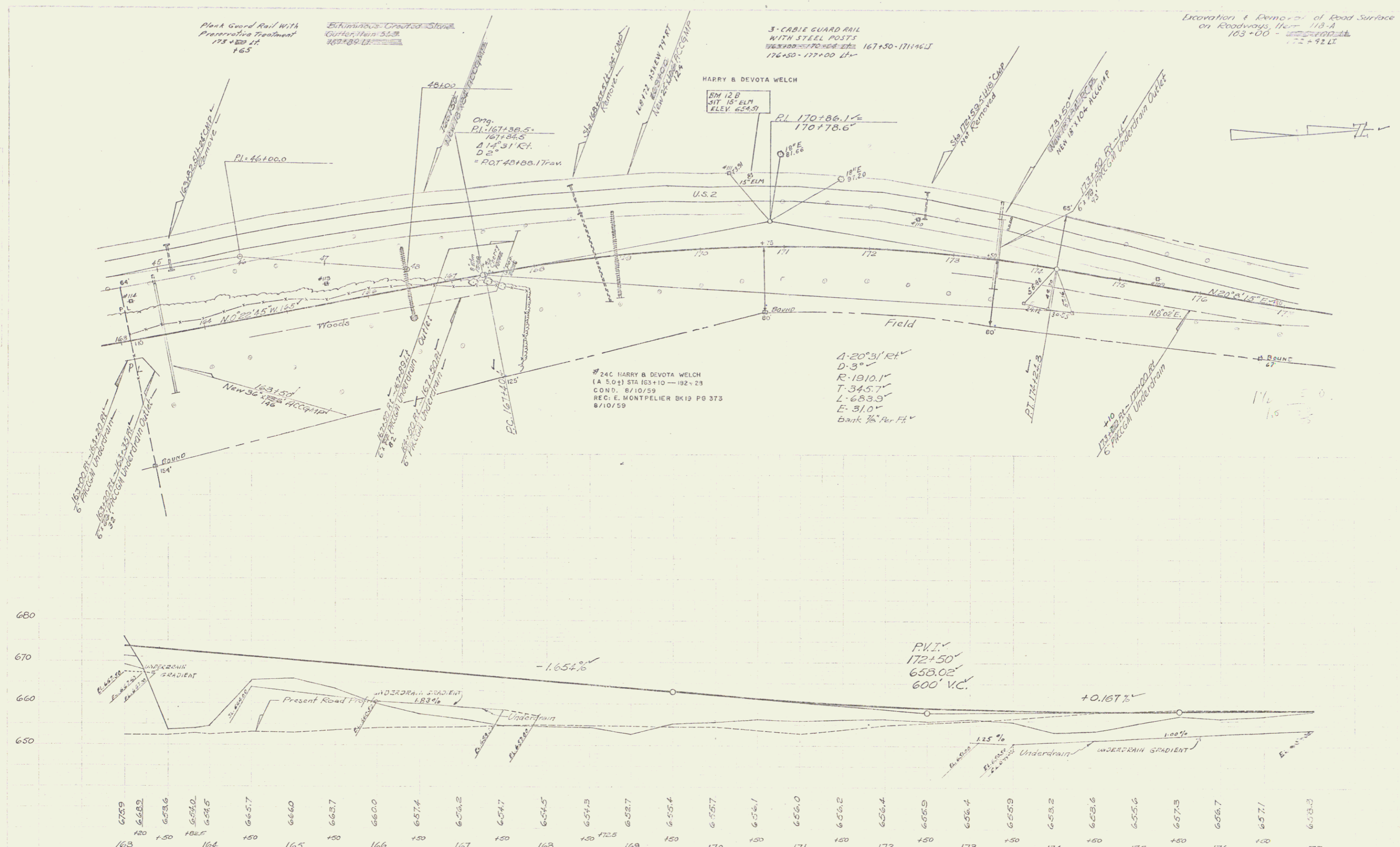


BERLIN-BARRE-E-MONTPELIER
 Project No. F 023-313
 Sheet No. 10 of 171

NOV 19 1980 10

Spaulding
Ewell
9/27
1958

Spaulding
Ewell
9/27
1958



BERLIN-BARRE-E MONTPELIER
Project No. F02A-3(3)
Sheet No. 20 of 171

