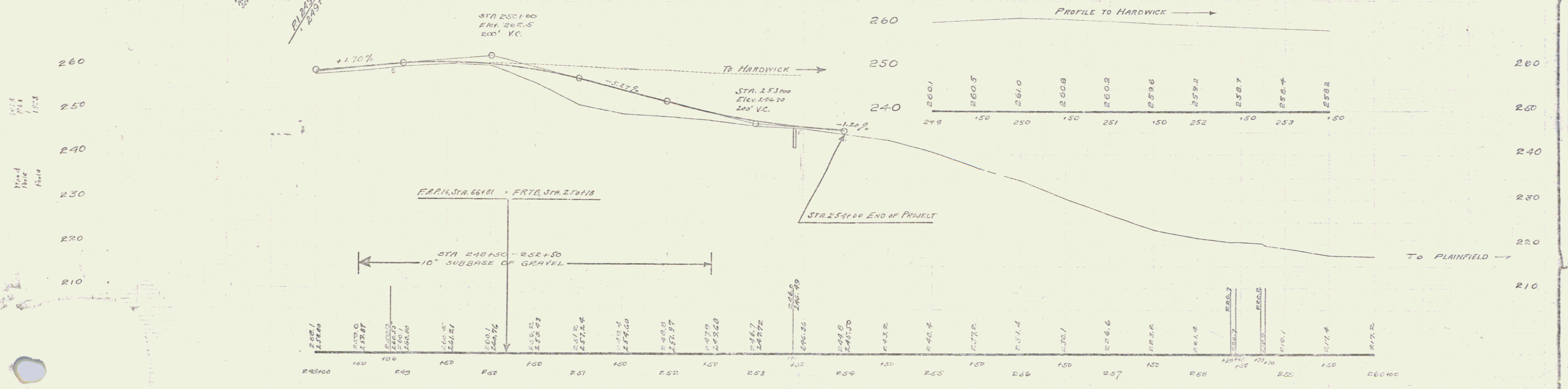
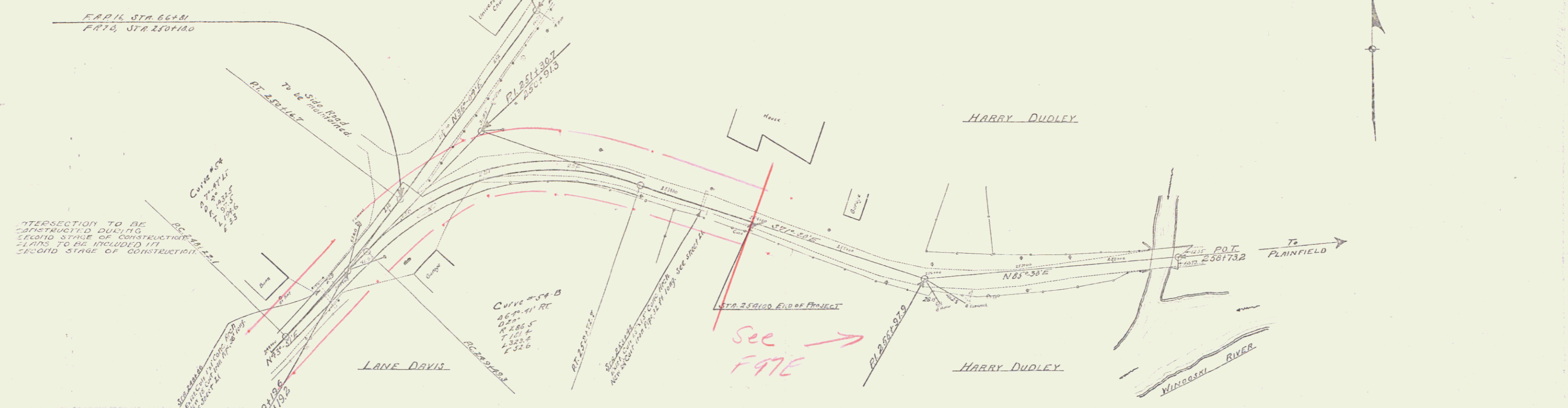


WOOD GUARD RAIL REMOVED
 STA. 253+74 - 253+75 Length 24 ft
 STA. 253+74 - 253+75 Length 24 ft
 STA. 253+74 - 253+75 Length 24 ft

NEW CULVERTS REQUIRED
 STA. 248+05 18" Cast Iron Pipe Length 36 ft
 Conc. Class B (1-4-1) 3/4 cu yds
 Reinf. Steel 33 lbs.
 STA. 253+44 24" Cast Iron Pipe Length 31 ft
 Conc. Class B (1-4-1) 2.6 cu yds
 Reinf. Steel 54 lbs.

FR 1044 20 77
 50



SERIES FR NO. 7B
 SHEET 20 OF 77