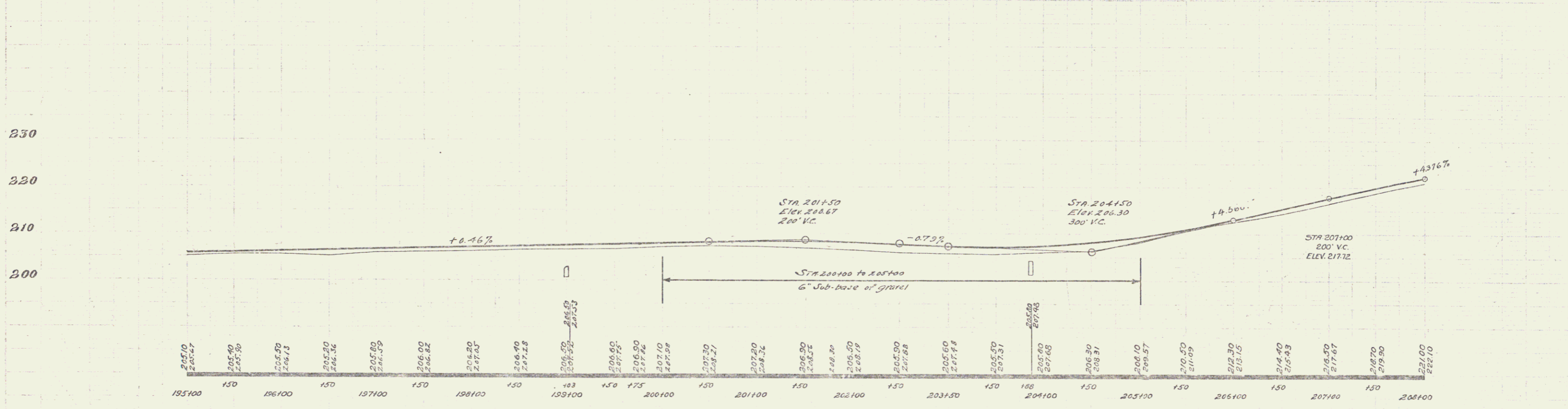
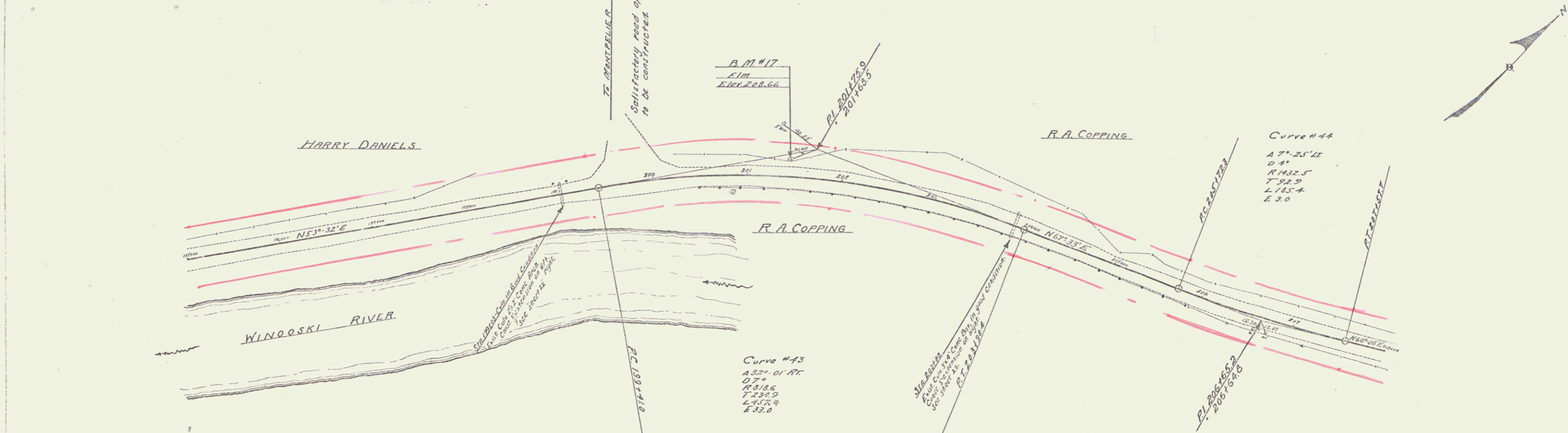


WOOD GUARD RAIL REQUIRED
 STA 20376-209100 LEFT RIGHT
 18'-0" 18'-15" 24' 24'

CULVERT REMAINS
 STA 199100 Conc. Class 7 (11-2-A) 57 cu. yds.
 Reinf. Steel 352 lbs.
 STA 202100 Conc. Class 7 (11-2-A) 4 cu. yds.
 Reinf. Steel 316 lbs.

FIG. NO.	DATE	BY	NO.	SHEET
351-A	10/22/22	F. B. B.	75	77



B.M. #17 Spike in root of 16" Elm 16 ft. Lr. Sta. 201144. Elev. 208.66

SERIES FR No. 13
 SHEET 12 OF 97

14