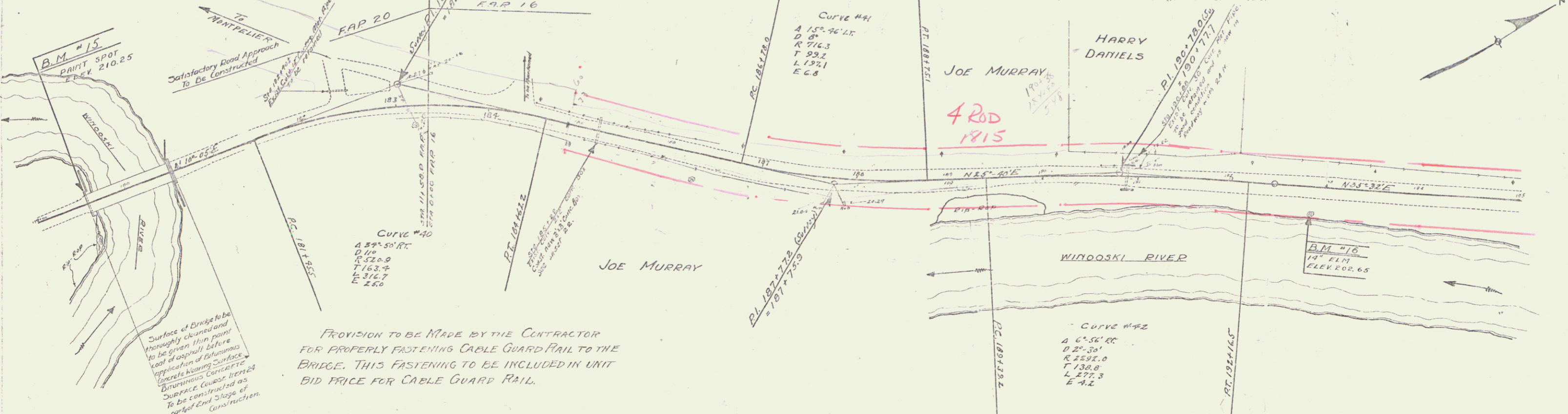


CABLE GUARD RAIL REQUIRED		WOOD GUARD RAIL REQUIRED	
STA. 180+30 - 181+56	96 LINEAR FEET	STA. 185+10 - 186+34	24 FEET
180+50 - 180+82	32 "	185+10 - 185+34	24 "
186+25 - 187+20	64 "	186+34 - 187+20	86 "
TOTAL FOR SHEET	196 "	STA. 187+20 - 188+34	114 "

NEW CULVERTS REQUIRED
 STA. 185+22 24" Reinf. Conc. Box, Conc. Class B, Reinf. Steel 179 cu. yds. 116 & 185.

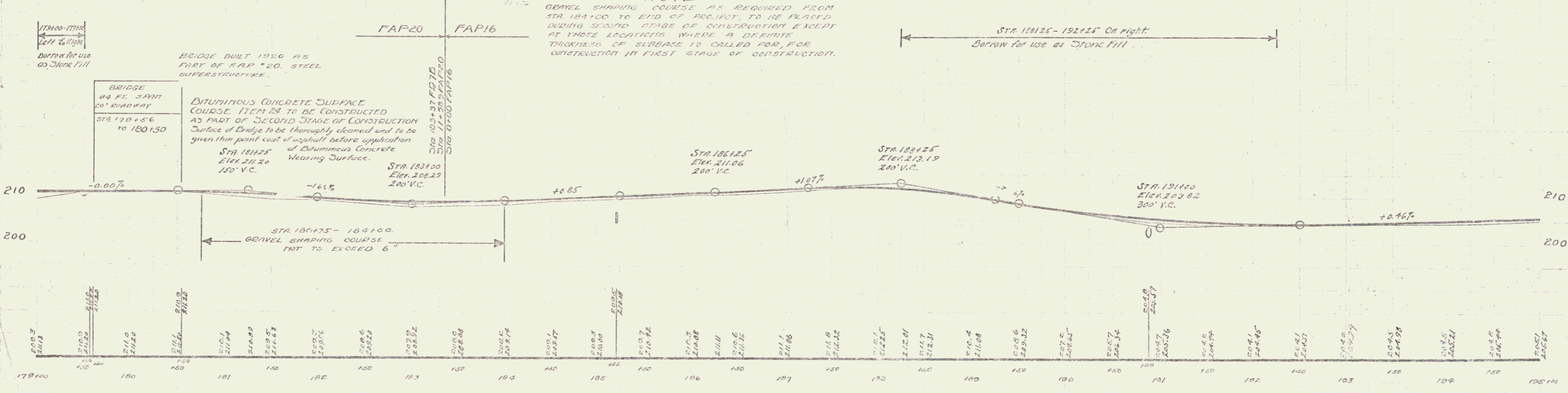
CULVERT REPAIRS
 STA. 180+00 30" CORRUG. METAL PIPE CONCRETE CLASS A (11-2-4) 0.9 cu. yds.

PR 18 1878 15 77



PROVISION TO BE MADE BY THE CONTRACTOR FOR PROPERLY FASTENING CABLE GUARD RAIL TO THE BRIDGE. THIS FASTENING TO BE INCLUDED IN UNIT BID PRICE FOR CABLE GUARD RAIL.

NOTE
 GRAVEL SHAPING COURSE AS REQUIRED FROM STA. 184+00 TO END OF PROJECT, TO BE PLACED DURING SECOND STAGE OF CONSTRUCTION EXCEPT AT THOSE LOCATIONS WHERE A DEFINITE THICKNESS OF SURFACE IS CALLED FOR, FOR CONSTRUCTION IN FIRST STAGE OF CONSTRUCTION.



B.M. #15 PAINT SPOT ON N.W. CORNER OF BRIDGE ABUTMENT LEFT STA. 179+55.1 ELEV. 210.25 = 1 B.M. ELEV. 655.80
 B.M. #16 SPIKE IN ROOF OF 14" FLM RIGHT STA. 181+85.1 ELEV. 202.65

SERIES PR 18 78
 SHEET 18 OF 77