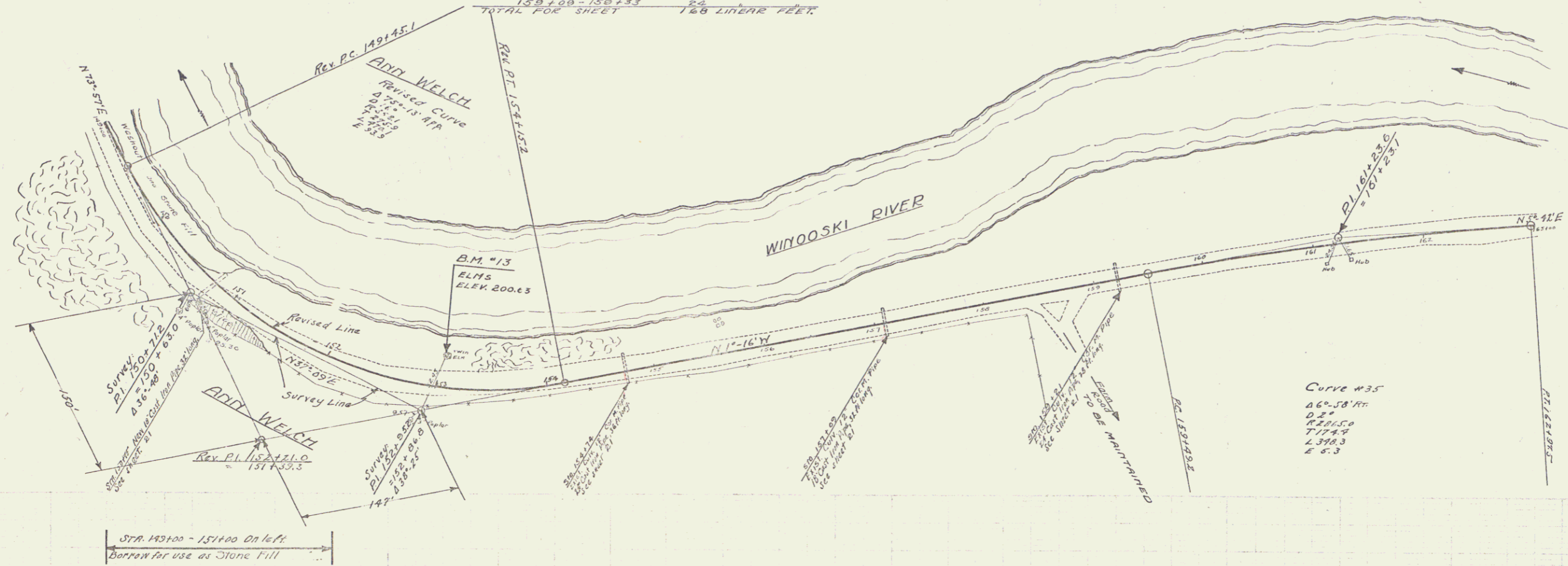


CABLE GUARD RAIL REQUIRED
ON LEFT
STA. 149+00 - 151+00 200 LINEAR FEET

WOOD GUARD RAIL REQUIRED
STA. 154+62 - 157+86 24 LINEAR FEET
156+07 - 157+21 24 " "
159+03 - 159+33 24 " "
150+63 - 150+87 24 " "
154+64 - 154+86 24 " "
156+07 - 157+21 24 " "
159+03 - 159+33 24 " "
TOTAL FOR SHEET 188 LINEAR FEET

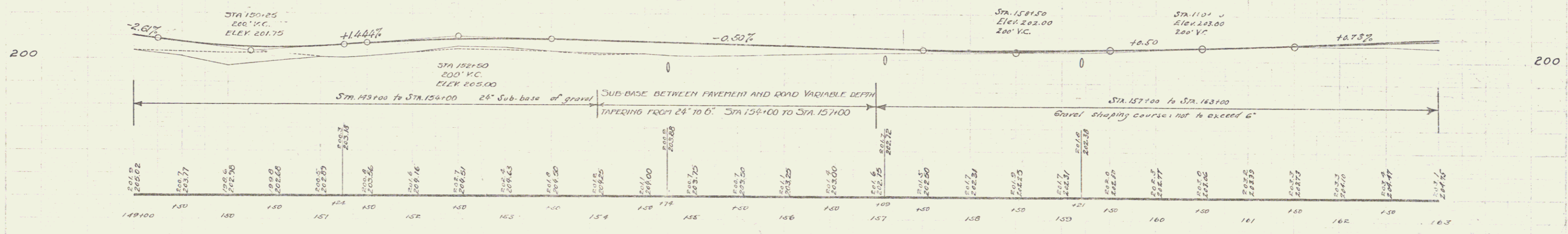
19
DEC 1978
PR 78 1028 13 77



NEW CULVERTS REQUIRED
Sta. 150+15 18" Cast Iron Pipe, Length 36ft.
Conc. Class B (12-4) 3.1 cu yds.
Reinf. Steel 33 lbs.
Sta. 154+74 24" Cast Iron Pipe, Length 36ft.
Conc. Class A (12-4) 2.6 cu yds.
Reinf. Steel 34 lbs.
Sta. 157+09 18" Cast Iron Pipe, Length 36ft.
Conc. Class B (12-4) 3.1 cu yds.
Reinf. Steel 33 lbs.
Sta. 159+21 24" Cast Iron Pipe, Length 36ft.
Conc. Class A (12-4) 2.6 cu yds.
Reinf. Steel 34 lbs.

Curve #35
46'-58" R.C.
0.2%
1520.50
717.49
2.3783
4'-5.3

STA. 149+00 - 151+00 On left
Borrow for use as Stone Fill



B.M. #13 SPIKE IN ROOT OF GROUP OF ELMS LEFT STA. 153+00 ± ELEV. 200.63

SERIES PR 78.7B
SHEET 13 OF 77