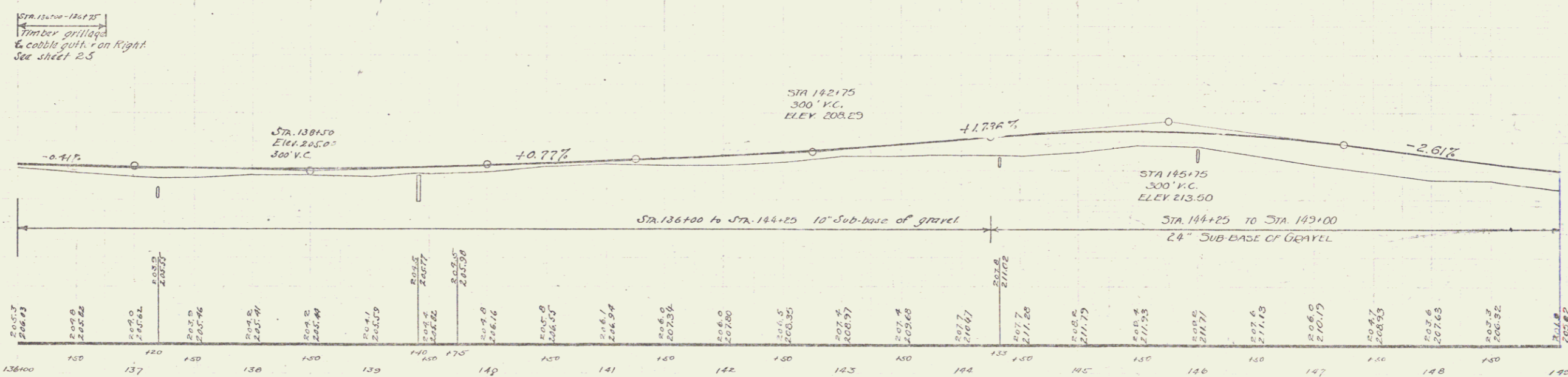
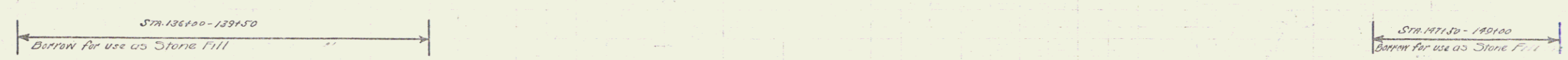
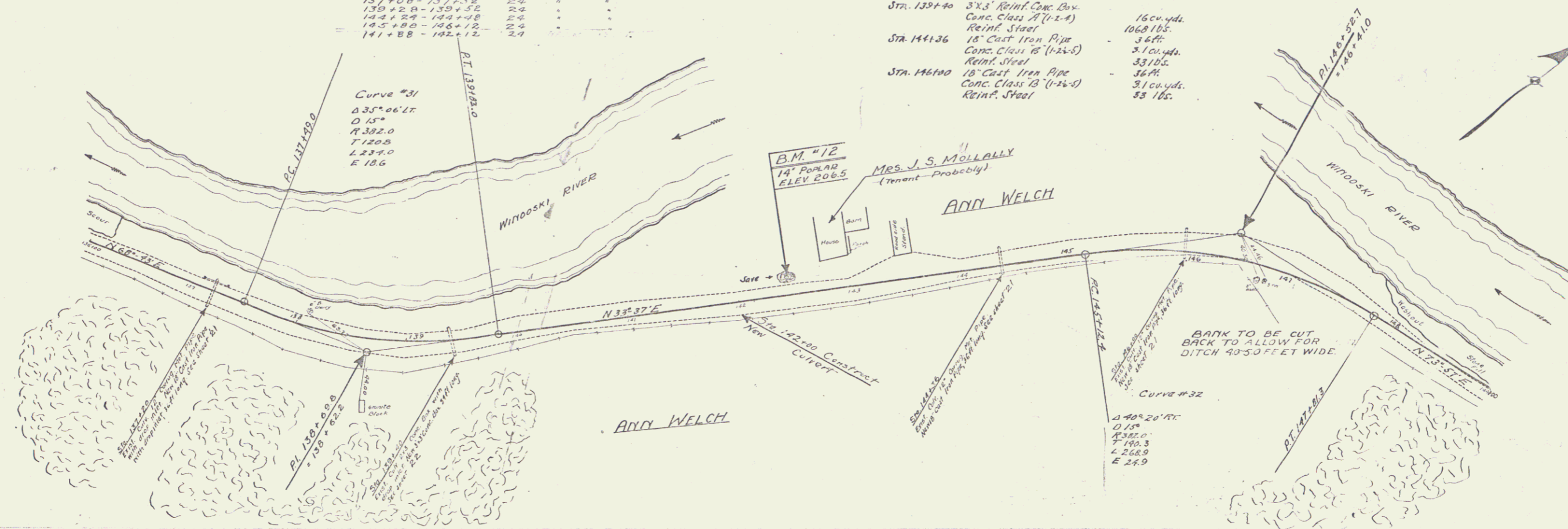


**CABLE GUARD RAIL REQUIRED**  
 STA. 139+16 - 139+64  
 147+24 - 149+00

**WOOD GUARD RAIL REQUIRED**  
 STA. 144+24 - 144+48  
 145+88 - 146+12  
 147+08 - 147+32  
 149+28 - 149+52  
 144+24 - 144+48  
 145+88 - 146+12  
 147+08 - 147+32

**NEW CULVERTS REQUIRED**  
 STA. 137+20 18" Cast Iron Pipe Length 36 ft.  
 with Conc. Class A (1-2-4) 1.5 cu. yds.  
 drop inlet Reinf. Steel (1-2-4) 14  
 STA. 139+40 3X3 Reinf. Conc. Box  
 Conc. Class A (1-2-4) 16 cu. yds.  
 Reinf. Steel 1068 lbs.  
 STA. 144+36 18" Cast Iron Pipe  
 Conc. Class B (1-2-5) 3 cu. yds.  
 Reinf. Steel 53 lbs.  
 STA. 146+00 18" Cast Iron Pipe  
 Conc. Class B (1-2-5) 3 cu. yds.  
 Reinf. Steel 53 lbs.

FR 7B 1020 12 77



B.M. #12 SPIKE IN ROOT OF 14' POPLAR LEFT STA. 142+40! ELEV. 206.5

SHEET 12 OF 77

10