

CABLE GUARD RAIL REQUIRED
ON LEFT

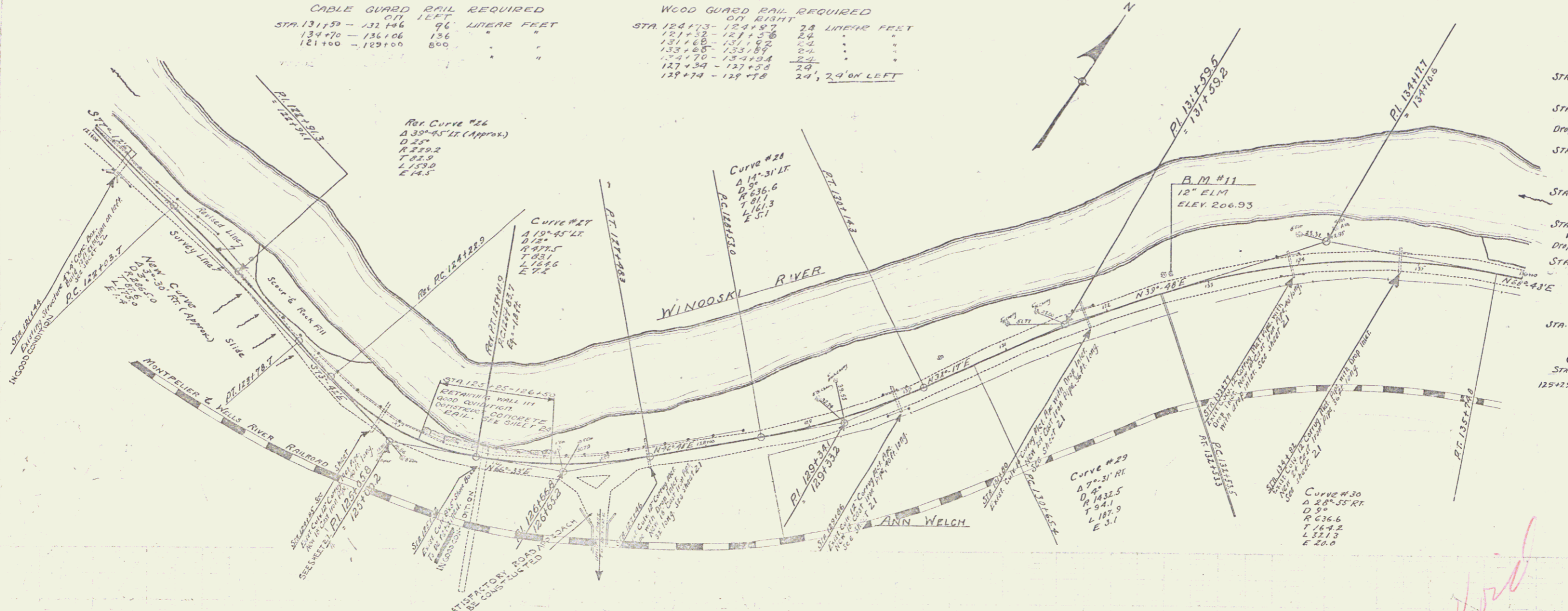
STA	LEFT	LINEAR FEET
131+50	131+84	34
134+70	136+04	36
121+00	129+00	800

WOOD GUARD RAIL REQUIRED
ON RIGHT

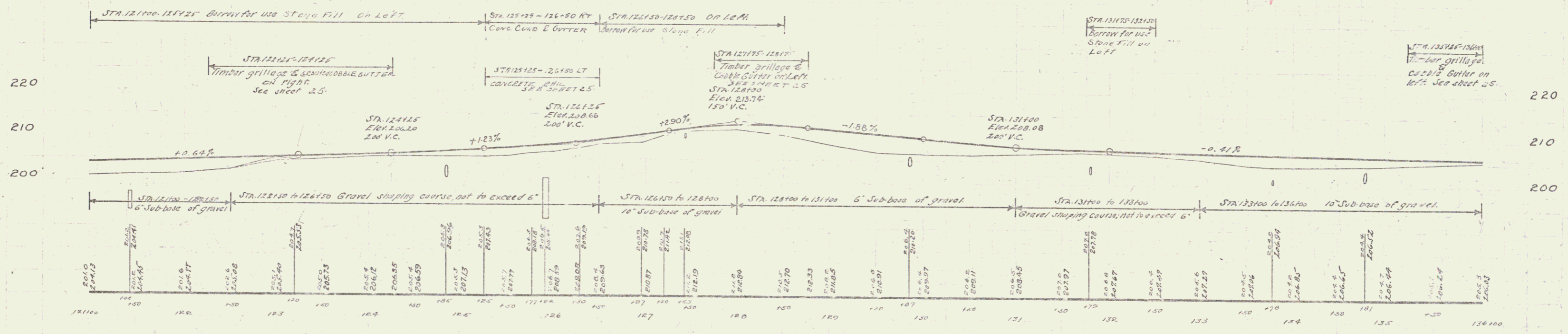
STA	RIGHT	LINEAR FEET
124+73	124+87	14
121+52	121+58	6
131+68	131+82	14
133+68	133+82	14
134+70	134+84	14
127+39	127+53	14
127+74	127+78	4

24' 2.9' ON LEFT

FRIB 1028 11 77



- NEW CULVERTS REQUIRED**
- STA. 124185 18" Cast Iron Pipe Length 40ft. Conc. Class B (1-2-5) 32cu yds. Reinf. Steel 33 lbs.
 - STA. 127+43 18" Cast Iron Pipe with Drop Inlet Conc. Class B (1-2-5) 15cu yds. Reinf. Steel 16 lbs.
 - STA. 129186 18" Cast Iron Pipe Conc. Class B (1-2-5) 40ft. 0.30cu yds. Reinf. Steel 16 lbs.
 - STA. 131+80 24" Cast Iron Pipe Conc. Class B (1-2-5) 60ft. 2.00cu yds. Reinf. Steel 53 lbs.
 - STA. 133+77 18" Cast Iron Pipe Conc. Class A (1-2-4) with Drop Inlet 40ft. 2.00cu yds. Reinf. Steel 125 lbs.
 - STA. 134182 24" Cast Iron Pipe Conc. Class A (1-2-4) 56ft. 1.60cu yds. Reinf. Steel 54 lbs.
- CULVERT REPAIRS**
- STA. 121+94 Conc. Class B (1-2-4) Reinf. Steel 12cu yds. 158 lbs.
- CONC. CURB & GUTTER REQUIRED STATIONS LEFT CONC. A, STR. EL. 125+25-126+50 RT. 125 FT. 9.7cu yd. 128 lbs.**



B.M. #11 SPIKE IN ROOT OF 12" ELM LEFT STA. 132+65.2 ELEV. 206.93

SERIES FB NO. 7B
SHEET 11 OF 77

9