

CABLE GUARD RAIL REQUIRED  
LEFT

STA. 105+00 - 106+00	Length 100 ft.
109+70 - 110+18	" 48 "
113+35 - 117+53	" 42 "
119+40 - 121+00	" 152 "

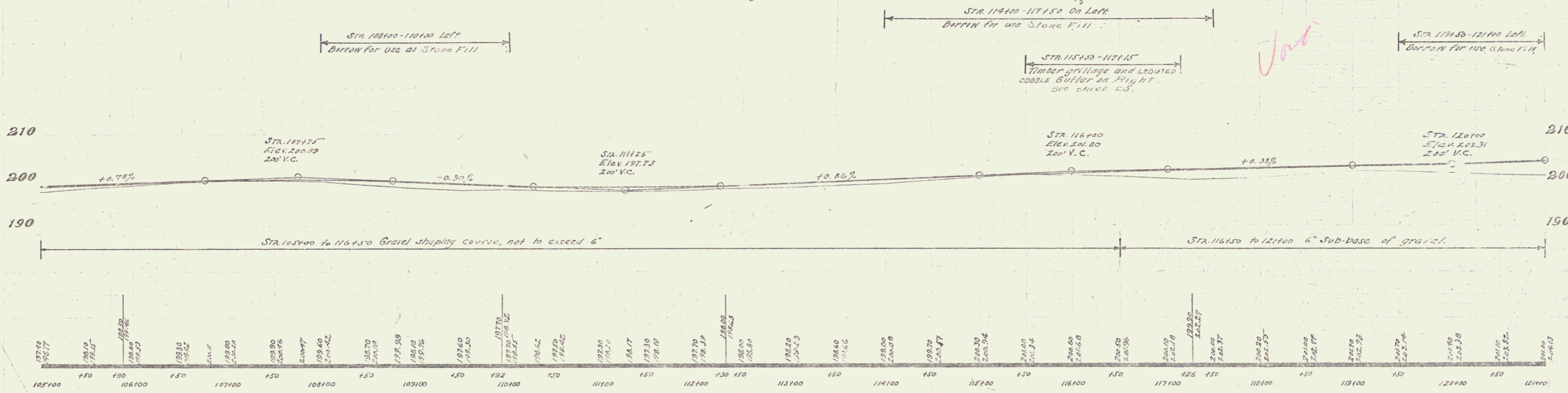
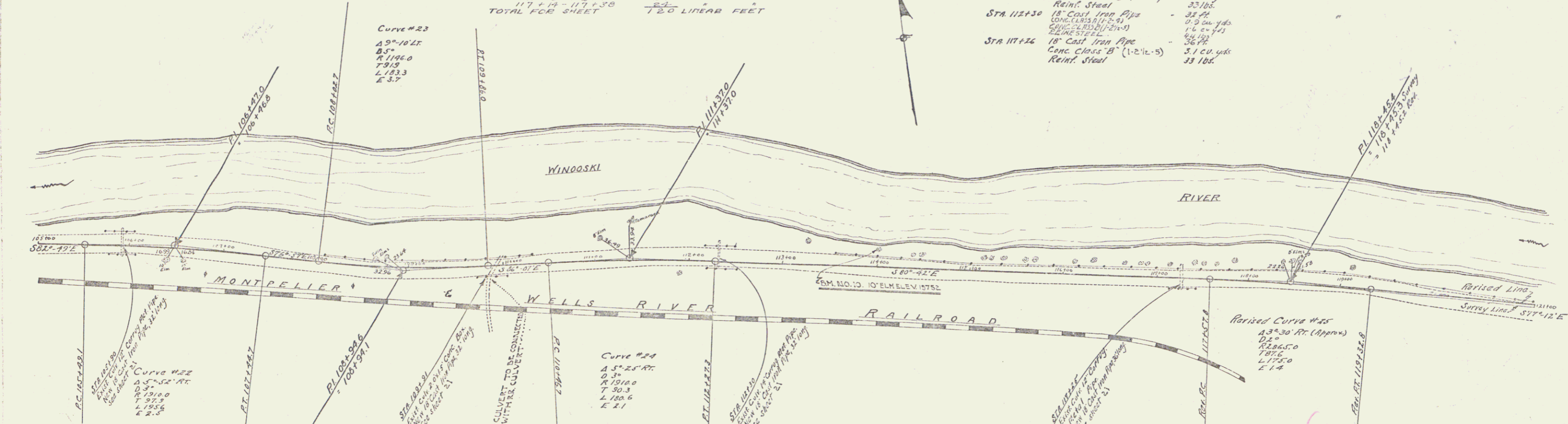
WOOD GUARD RAIL REQUIRED  
ON LEFT  
ON RIGHT

STA 112+18 - 112+42	24 LINEAR FEET
105+78 - 106+02	24 " "
109+78 - 110+02	24 " "
112+18 - 112+42	24 " "
117+14 - 117+38	24 " "
TOTAL FOR SHEET	120 LINEAR FEET

NEW CULVERTS REQUIRED

STA. 105+50	18" Cast Iron Pipe, Length 32 ft.	19 cu. yds.
	Conc. Class B (1-2-4)	34 lbs.
	Reinf. Steel	
STA. 109+52	18" Cast Iron Pipe, Length 32 ft.	3/4 cu. yds.
	Conc. Class B (1-2-4)	35 lbs.
	Reinf. Steel	
STA. 112+30	18" Cast Iron Pipe, Length 32 ft.	0.5 cu. yds.
	Conc. Class B (1-2-4)	1.4 cu. yds.
	Reinf. Steel	34 lbs.
STA. 117+24	18" Cast Iron Pipe, Length 32 ft.	3.1 cu. yds.
	Conc. Class B (1-2-4)	33 lbs.
	Reinf. Steel	

DATE	1 FEB 1928	SHEET	10	TOTAL SHEETS	77
PROJECT	FRYB 1928	NO.			



BENCH MARK NO. 10 SPIKE IN 10' ELM. LEFT STA. 114+00 ELEV. 197.52

SERIES PR NO. 78  
SHEET 10 OF 77