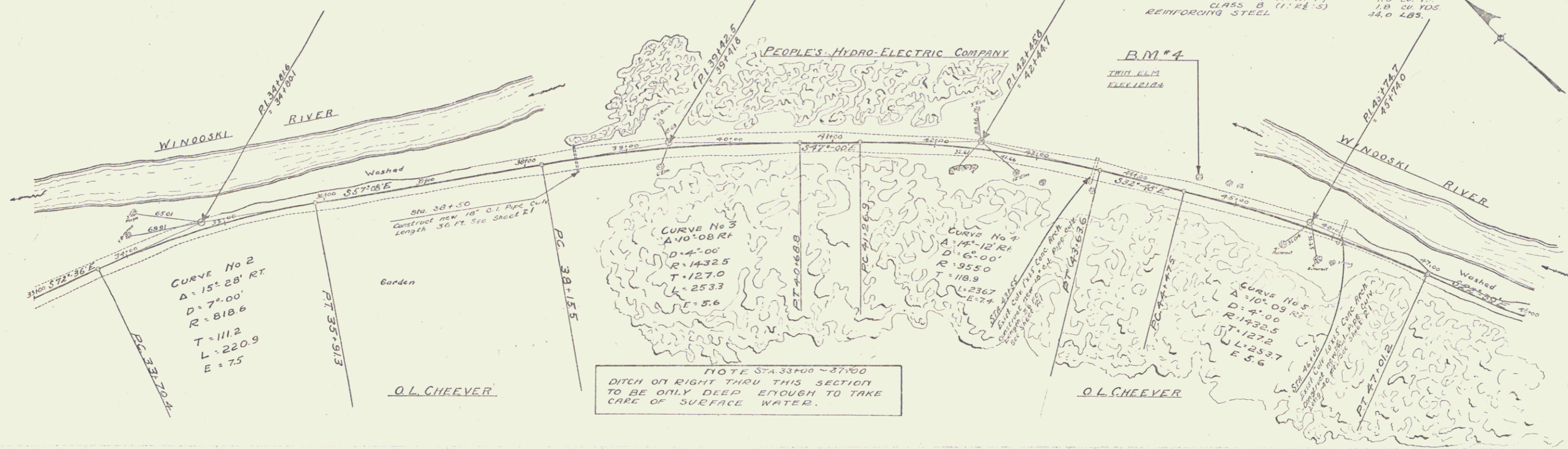


CABLE GUARD RAIL REQUIRED
 STA 34+80 - 38+72 392 LINEAR FEET
 45+72 - 48+00 228 " "

WOOD GUARD RAIL REQUIRED
 STA 38+30 - 50+62 24 LINEAR FEET
 43+94 - 46+18 24 " "
 43+42 - 43+67 24 " "

NEW CULVERTS REQUIRED
 STA 38+50 18" CAST IRON PIPE LENGTH 36.0 FT
 CONCRETE CLASS B (1:2:4) 3.1 CU YDS.
 43+55 42" CAST IRON PIPE LENGTH 36.0 FT
 REINFORCING STEEL 33.0 LBS.
 CONCRETE CLASS A (1:2:4) 0.9 CU YD
 CLASS B (1:2:4) 4.6 CU YDS
 46+06 24" CAST IRON PIPE LENGTH 40.0 FT
 REINFORCING STEEL 1.0 CU YD
 CONCRETE CLASS B (1:2:4) 1.8 CU YDS
 CLASS B (1:2:4) 44.0 LBS.

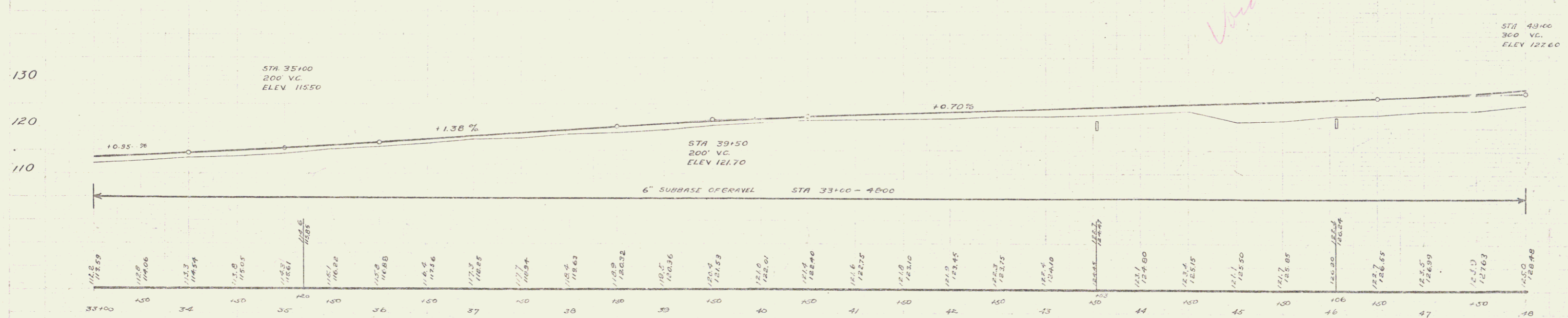
DESIGNED BY	STATE	DESIGNED BY	STATE	SHEET NO.	TOTAL SHEETS
				5	77



NOTE STA 33+00 - 37+00
 DITCH ON RIGHT THRU THIS SECTION
 TO BE ONLY DEEP ENOUGH TO TAKE
 CARE OF SURFACE WATER.

STONE FILL OF LEDGE EXCAVATION
 ON LEFT STA 32+50 - 39+50

ON LEFT
 STONE FILL OF LEDGE EXCAVATION
 STA 45+50 - 48+00



B.M. # 4 SPIKE IN ROOT OF TWIN ELM LEFT OF STA 44+60.2 ELEV 121.89

SERIES FD NO. 70
 SHEET 5 OF 77