

WOOD GUARD RAIL REQUIRED

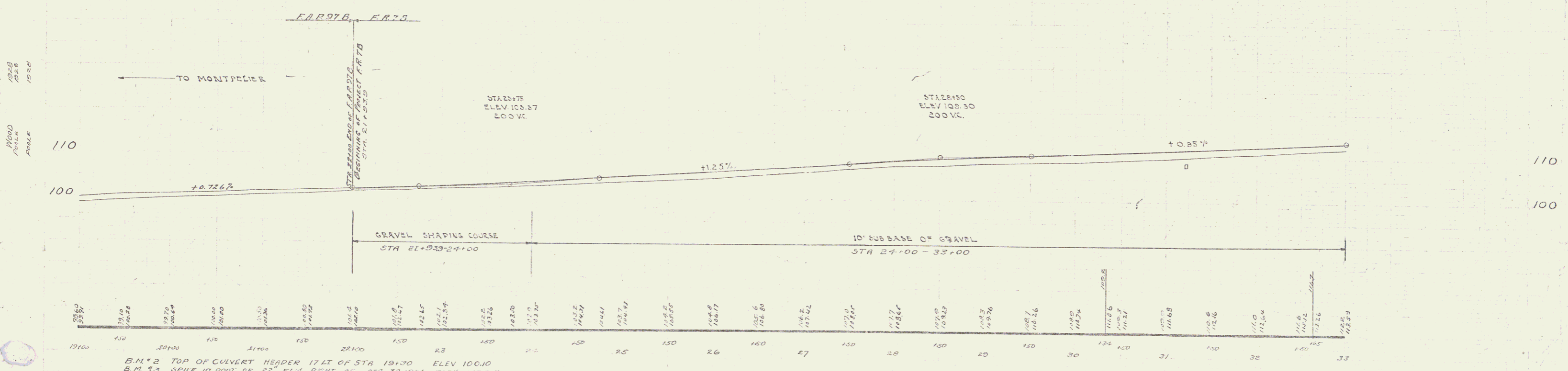
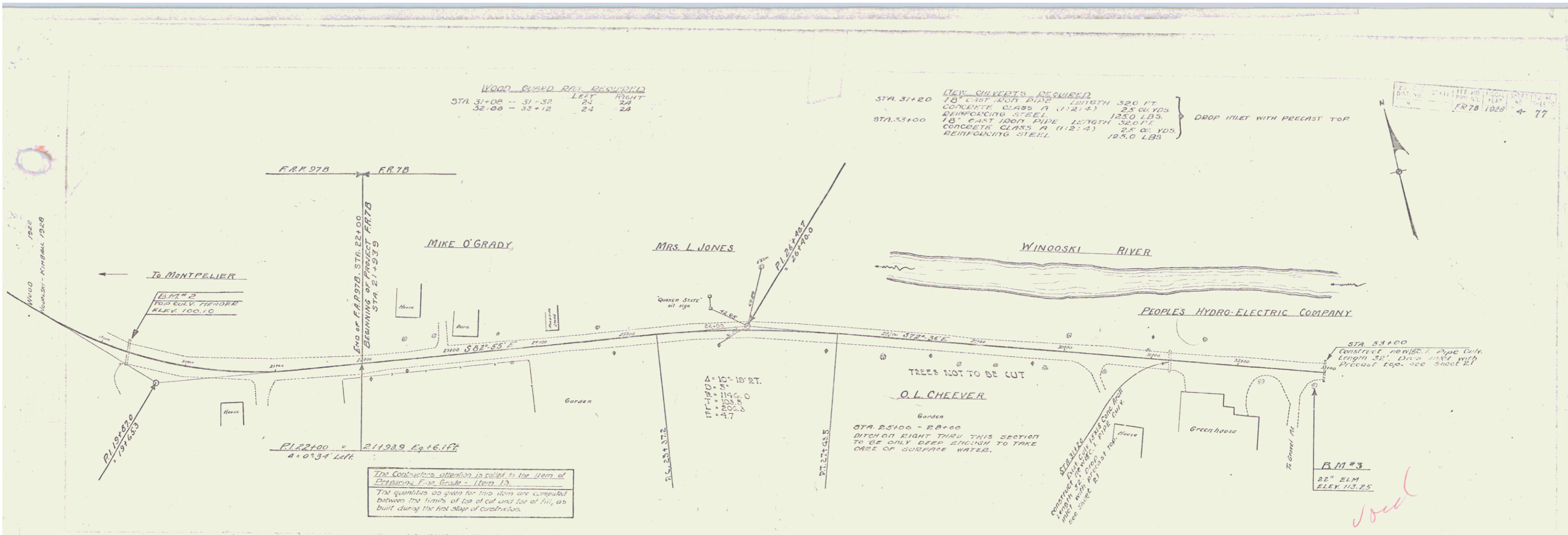
STA 31+00 - 31+32	LEFT	RIGHT
32+00 - 33+12	24	24

NEW CULVERTS REQUIRED

STA 31+20	18" CORR. AND PIPE	LENGTH 320 FT
	CONCRETE CLASS A (1:2:4)	25 CU YDS
	REINFORCING STEEL	1250 LBS
STA 33+00	18" CORR. AND PIPE	LENGTH 320 FT
	CONCRETE CLASS A (1:2:4)	25 CU YDS
	REINFORCING STEEL	1250 LBS

DROP INLET WITH PRECAST TOP

DATE: 1928
 DRAWN BY: [Signature]
 CHECKED BY: [Signature]
 PROJECT NO: 177



B.M. #2 TOP OF CULVERT HEADER 17 FT. OF STA 19+30 ELEV 100.10
 B.M. #3 SPIKE IN ROOF OF 22" ELM. RIGHT OF STA 32+90.1 ELEV 113.25

SHEET NO. 78
 OF 77