

Cable Guard Now Required

Stations	Left	Right
414+00-416+25	-	229'
416+25-418+50	112'	-
418+50-420+100	-	334'
420+100-421+00	80'	-
421+00-421+80	-	80'
421+80-430+00	-	690'
430+00-432+00	-	32'

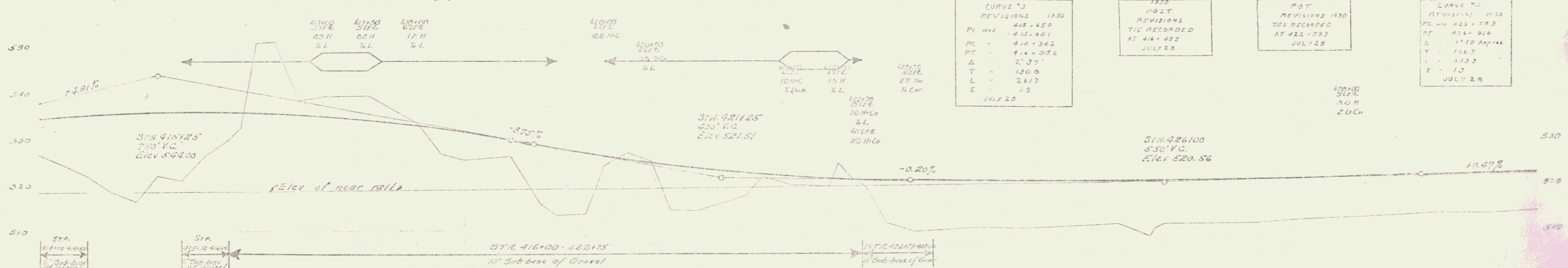
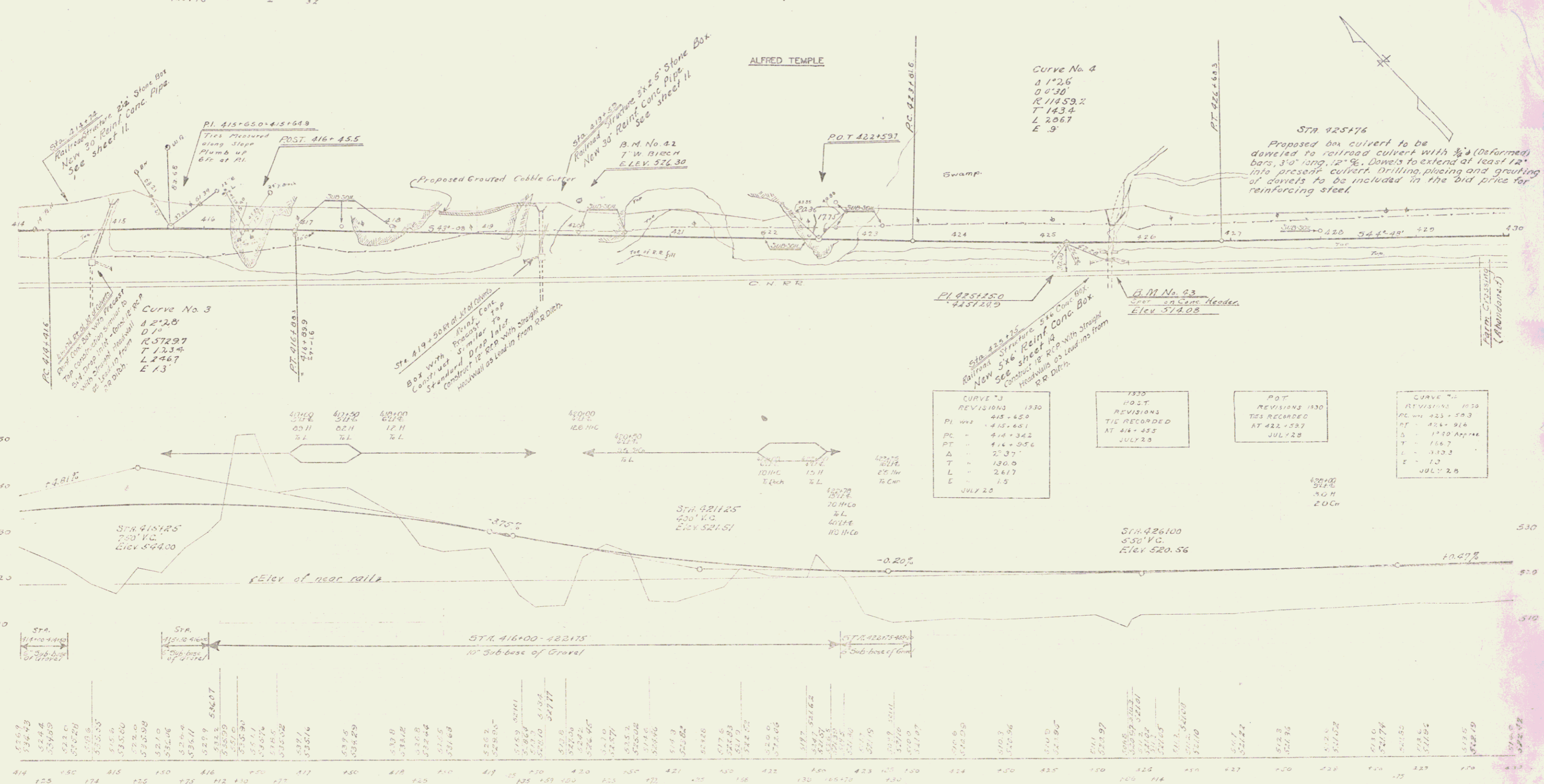
New Reinf. Conc. Box Culverts Required New Drive Conc. Box Culverts Required

Station	Drive	Length	Sp. & Size	incl.	Station	Size	Conc. & Steel
421+72	30'	70"	50 c/y 12" x 20"	23.5'	425+74	5' x 6'	310 c/y 2370 * 23.5'
419+85	30'	40"	50 c/y 12" x 20"	23.5'			
419+74	12'	12"	(Lead in)				
419+37	12'	10"	(Lead in)				
425+76	12'	32"	(Lead in)				

Grouted Concrete Culvert Proposed

Stations	Side	Width	Size
418+50-419+50	LH	3'-0"	40 sq yds.

1019 1780 2 30



Sta.	Elev.	Sta.	Elev.	Sta.	Elev.	Sta.	Elev.	Sta.	Elev.	Sta.	Elev.	Sta.	Elev.	Sta.	Elev.	Sta.	Elev.	Sta.	Elev.	Sta.	Elev.												
414	514.9	415	514.4	416	514.9	417	515.4	418	515.9	419	516.4	420	516.9	421	517.4	422	517.9	423	518.4	424	518.9	425	519.4	426	519.9	427	520.4	428	520.9	429	521.4	430	521.9

B.M. No. 42 Spike in roof of T white Birch, left of Sta. 425+00. Elev. 526.30
 B.M. No. 43 Sp. on conc. header, right of Sta. 425+74. Elev. 516.00

SHEET 5 OF 32