

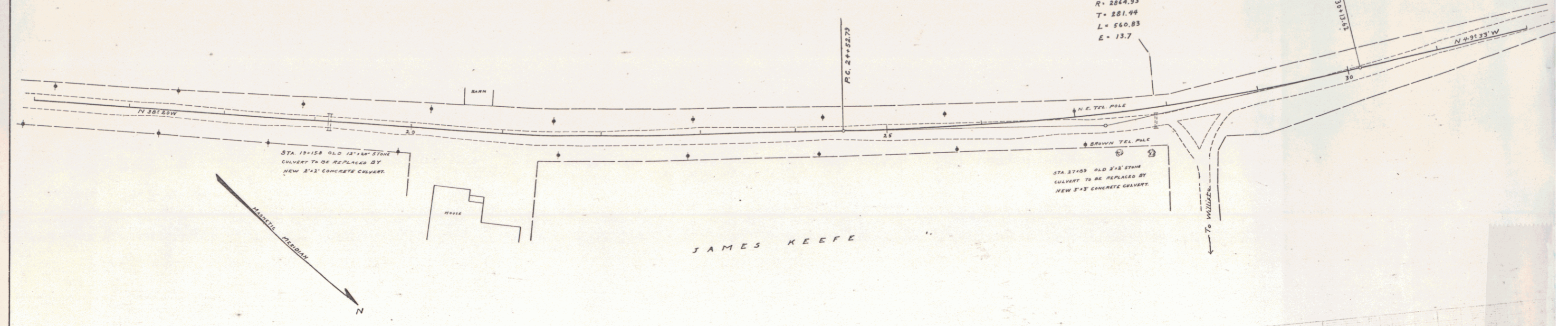
**GUARD RAIL REQUIRED ON RIGHT**  
 Sta. 13+09 to 13+20 Length 24 ft.  
 " 27+77 - 28+01 " 24 "  
**ON LEFT**  
 Sta. 13+04 to 13+20 Length 24 ft.  
 " 27+27 - 28+01 " 29 "  
 " 28+50 - 29+54 " 106 "  
 TOTAL THIS SHEET 200'

**NEW CULVERTS REQUIRED**  
 Sta. 18+18 - 2+2' Concrete Culvert 27' Long  
 18.5 cu yd. concrete  
 Sta. 27+03 - 3+3' Concrete Culvert 30' Long  
 18.2 cu yd. concrete

POOR ORIGINAL COPY

JAMES KEEFE

$\Delta = 11^{\circ}13'$   
 $D = 21'$   
 $R = 284.93'$   
 $T = 281.44'$   
 $L = 560.83'$   
 $E = 13.7'$



Survey by H. F.  
 Plotted by J. O.  
 Traced by J. O.  
 Series F. No. 30