

FED. ROAD DIST. NO.	STATE	FED. AID LEGAL PAID. YEAR	SHEET NO.	TOTAL SHEETS
9	VT.	1917	3	17

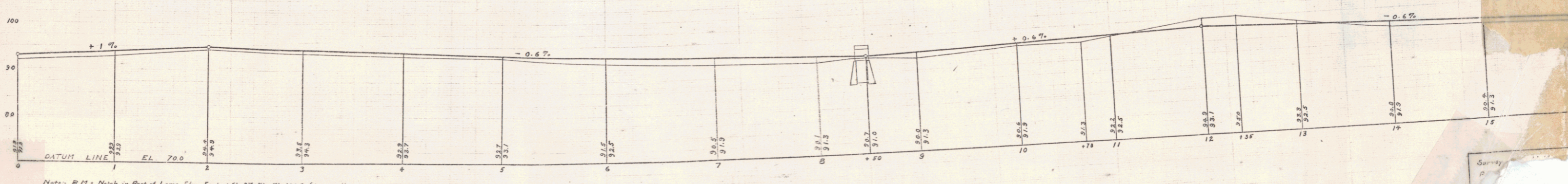
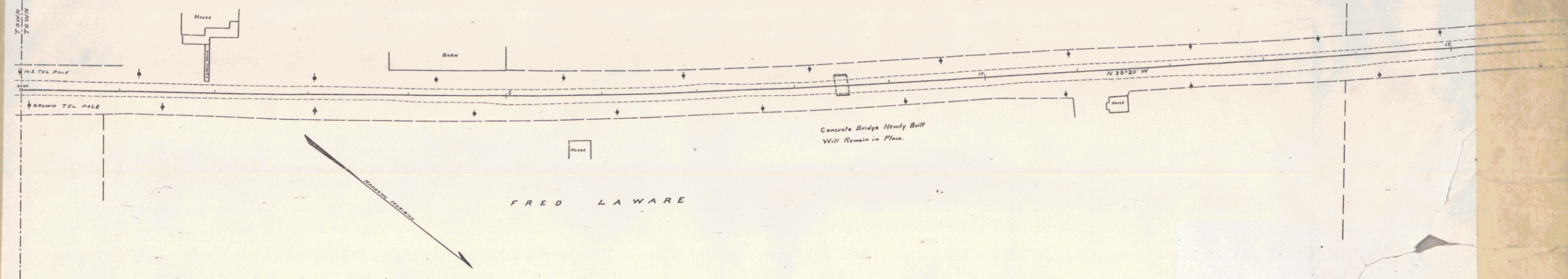
**GUARD RAIL REQUIRED**  
 ON RIGHT  
 Sta. 8+76 to Sta. 8+90 Length 14 ft  
 8+22 - 9+03 = 48 -  
 ON LEFT  
 Sta. 6+38 to Sta. 8+38 Length 200 ft.  
 8+53 - 9+01 = 48 -  
 14+76 - 15+24 = 48 -  
 TOTAL THIS SHEET 260 -

**UNDERDRAIN REQUIRED IN CENTER**  
 Sta. 8+00 to 8+33 Length 34 ft  
 8+24 - 13+25 + 10 = 48 -  
 TOTAL THIS SHEET 830 -

**GRAVEL OR STONE BASE REQUIRED**  
 Sta. 0+00 to Sta. 26+50 Length 2650 ft.  
 TOTAL THIS SHEET 2650 -

BLOSSOM GOODRICH

POOR ORIGINAL COPY



Note: 2 ft. - Match in Road of Large Elm East of Sta. 27+50 at 100.0 (Assumed)