

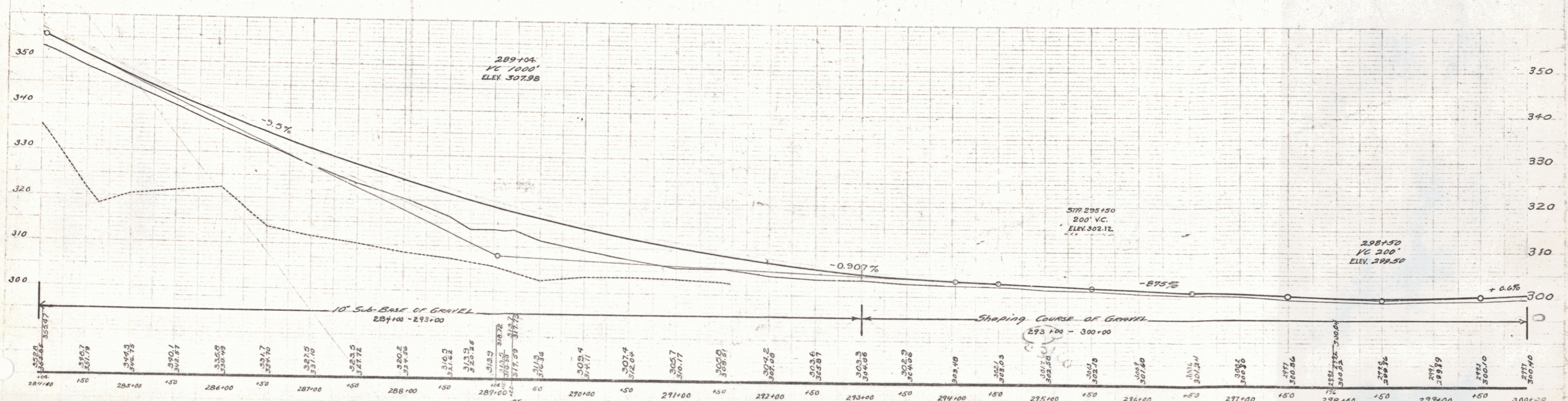
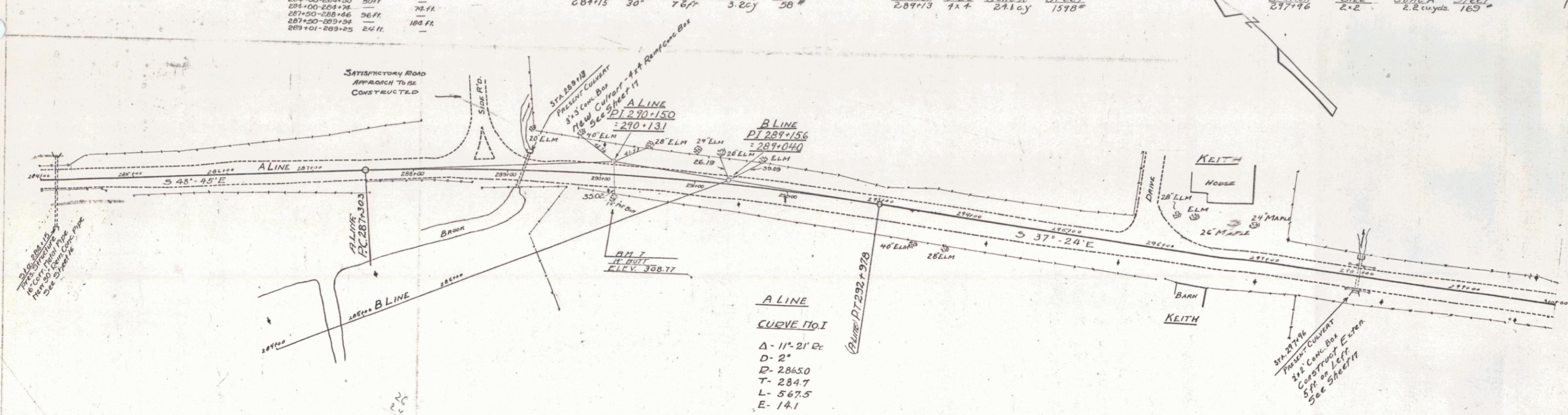
WOOD GUARD RAIL REQUIRED
 277+00.3 Left Right
 277+04.270+09 24 ft 24 ft

CABLE GUARD RAIL REQUIRED
 277+00.3 Left Right
 284+00-284+50 50 ft
 284+00-284+34 16 ft
 287+50-288+46 96 ft
 287+50-289+34 84 ft
 289+101-289+25 24 ft

NEW REIN CONC PIPE CULVERTS REQUIRED
 STATION Diam Length Conc. A Steel
 284+11.5 30" 76.7' 3.2cy 38 #

NEW REIN CONC BOX CULVERTS REQUIRED
 STATION Size Conc. A Steel
 287+74.7 4x4 241cy 1595 #

REPAIRS ON CULVERTS REQUIRED
 STATION Size Conc. A Steel
 277+74.6 2x2 2.2cy 165 #



B.M. NO. 7 14' POPLAR BUTT AT FOOT OF FRENCH HILL ELEV. 308.77

SERIES F NO. 60C
 SHEET 9 OF 50