

CABLE GUARD RAIL REQUIRED
 STATIONS LEFT RIGHT
 269+56-272+20 264' -
 262+74-264+00 126' -
 277+28-280+00 222' -
 277+38-277+62 24' -

CABLE GUARD RAIL REQUIRED
 STATIONS LEFT RIGHT
 269+56-272+20 264' -
 262+74-264+00 126' -
 277+28-280+00 222' -
 277+38-277+62 24' -

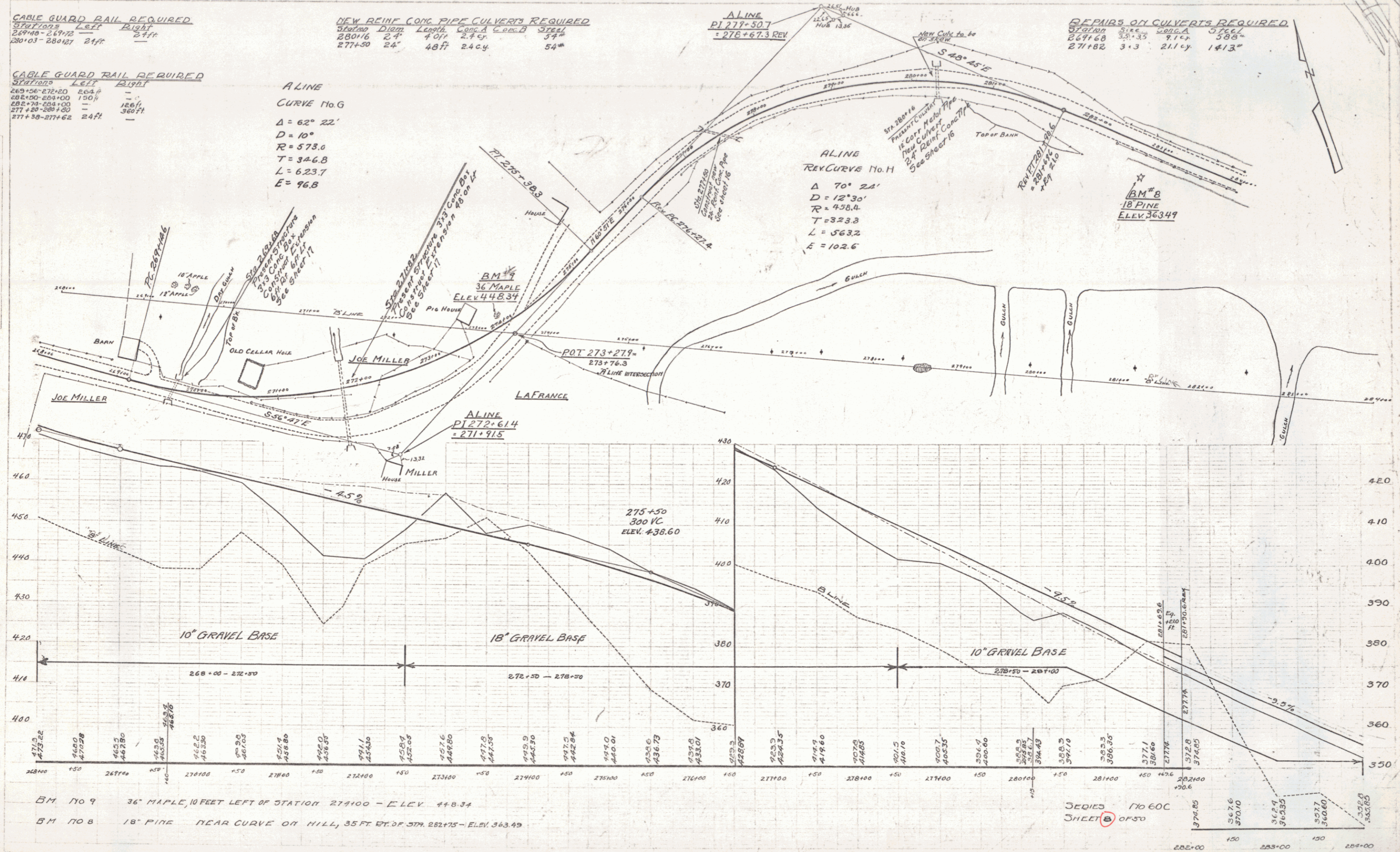
NEW REIN. CONG. PIPE CULVERTS REQUIRED
 STATION DION LENGTH CONC. CORR. STEEL
 280+16 24' 40ft 2.4 cy 54"
 277+50 24' 48ft 2.4 cy 54"

ALINE
 PI 279+507
 = 278+67.3 REV

REPAIRS ON CULVERTS REQUIRED
 STATION GRADE CONC. STEEL
 271+82 3.3 211 cy 1413"

ALINE
 CURVE No. G
 $\Delta = 62^\circ 22'$
 $D = 10'$
 $R = 573.0$
 $T = 346.8$
 $L = 623.7$
 $E = 96.8$

ALINE
 REV. CURVE No. H
 $\Delta = 70^\circ 24'$
 $D = 12^\circ 30'$
 $R = 458.4$
 $T = 323.3$
 $L = 563.2$
 $E = 102.6$



BM No 9 36 MAPLE, 10 FEET LEFT OF STATION 27400 - ELEV. 448.34
 BM No 8 18 PINE NEAR CURVE ON HILL, 35 FT. RT. OF STR. 282+75 - ELEV. 363.49

SERIES NO 60C
 SHEET B OF 30