

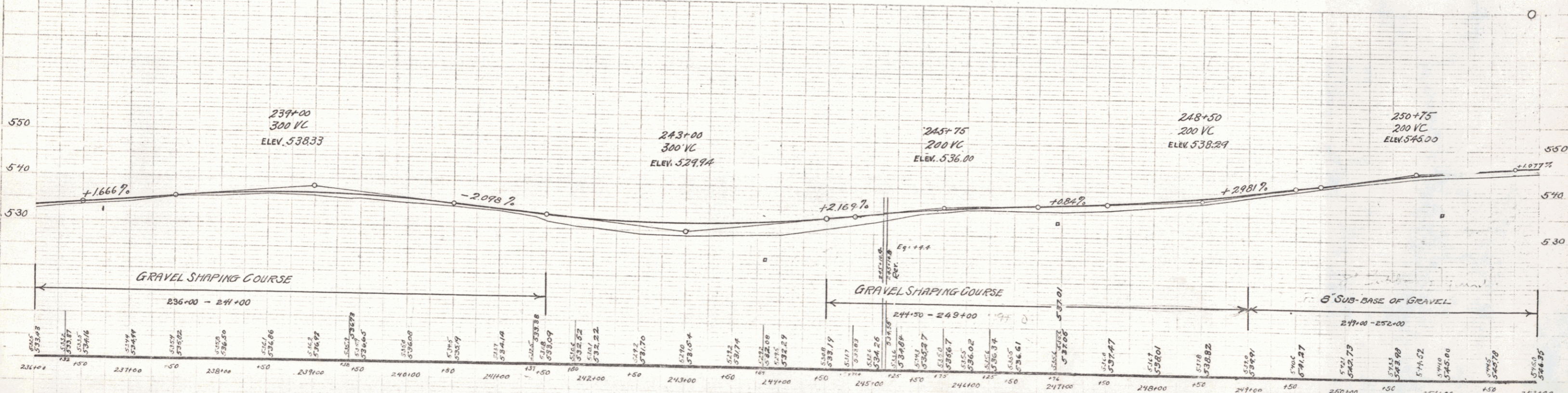
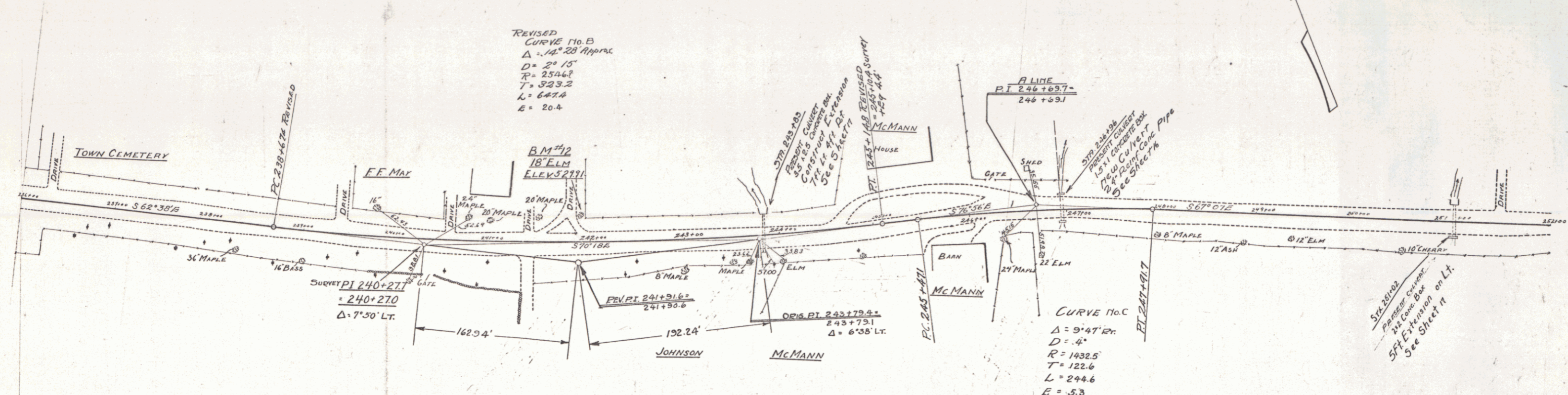
WOOD GUARD RAIL REQUIRED
 STATIONS LEFT RIGHT
 243+75-243+96 24ft 24ft
 244+03-244+07 24ft 24ft
 254+08-254+12 24ft 24ft

NEW REIN. CONG. PIPE CULVERTS REQUIRED
 Station Diagram Length Cond. A Cond. B Feet
 246+94 27' 32ft 2.4cy 54'

REPAIRS ON CULVERTS REQUIRED
 Station Length Cond. A Cond. B Feet
 243+83 35.35 63cy 450'
 251+02 2.2 2.2cy 169'

REVISED CURVE NO. B
 $\Delta = 44^\circ 28'$ Approx
 $D = 20' 15"$
 $R = 2504.8$
 $T = 923.2$
 $L = 647.4$
 $E = 20.4$

CURVE NO. C
 $\Delta = 9^\circ 47'$ EX
 $D = 4'$
 $R = 1432.5$
 $T = 122.6$
 $L = 244.6$
 $E = .53$



BM NO. 12 18' ELM BY ENTRANCE TO WILLINGTON COUNTRY CLUB, 16 FT. LT. OF STA. 241+90 - ELEV. 5299.1

SERIES F NO. 60C
 SHEET 6 OF 50