

1928
 RUTHMAN
 E. PLANNING
 1928

1928
 RUTHMAN
 E. PLANNING
 1928

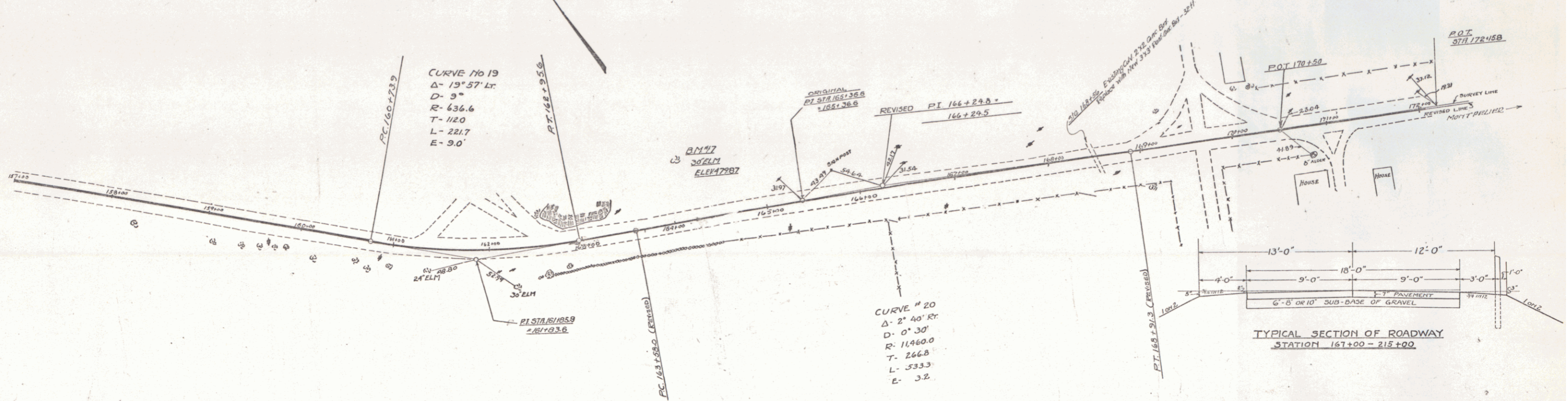
WOOD GUARD RAIL REQUIRED
ON EIGHT
 Sta. 168+44 to Sta. 168+68 Length 24 ft.

CABLE GUARD RAIL REQUIRED
ON LEFT
 Sta. 157+00 to Sta. 159+68 Length 268 ft.
 Sta. 167+24 to Sta. 168+68 Length 144 ft.

ON EIGHT
 Sta. 157+00 to Sta. 159+68 Length 268 ft.
 Sta. 164+28 to Sta. 165+85 Length 160 ft.

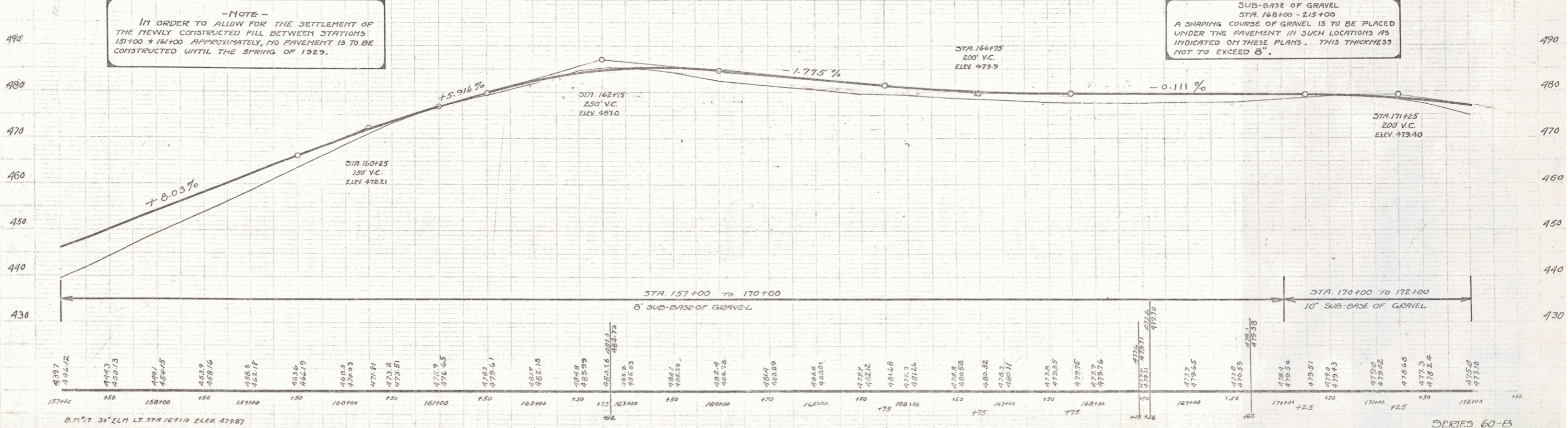
NEW CURBSETS REQUIRED
 Sta. 168+56 New 3"x3" Fiberglass Box Length 32 ft.
 Concrete Class A (1-2-4) 167 cu yd.
 Reinforcing Steel 1018 lbs.

DIST. NO. 60-B
 YEAR 1928
 SHEET NO. 13
 TOTAL SHEETS 45



-NOTE-
 IN ORDER TO ALLOW FOR THE SETTLEMENT OF THE NEWLY CONSTRUCTED FILL BETWEEN STATIONS 157+00 + 164+00 APPROXIMATELY, NO PAVEMENT IS TO BE CONSTRUCTED UNTIL THE SPRING OF 1929.

SUB-BASE OF GRAVEL
 STA. 168+00 - 215+00
 A SHAPING COURSE OF GRAVEL IS TO BE PLACED UNDER THE PAVEMENT IN SUCH LOCATIONS AS INDICATED ON THESE PLANS. THIS THICKNESS NOT TO EXCEED 8".



SERIES 60-B
 Sheet 13 of 45