

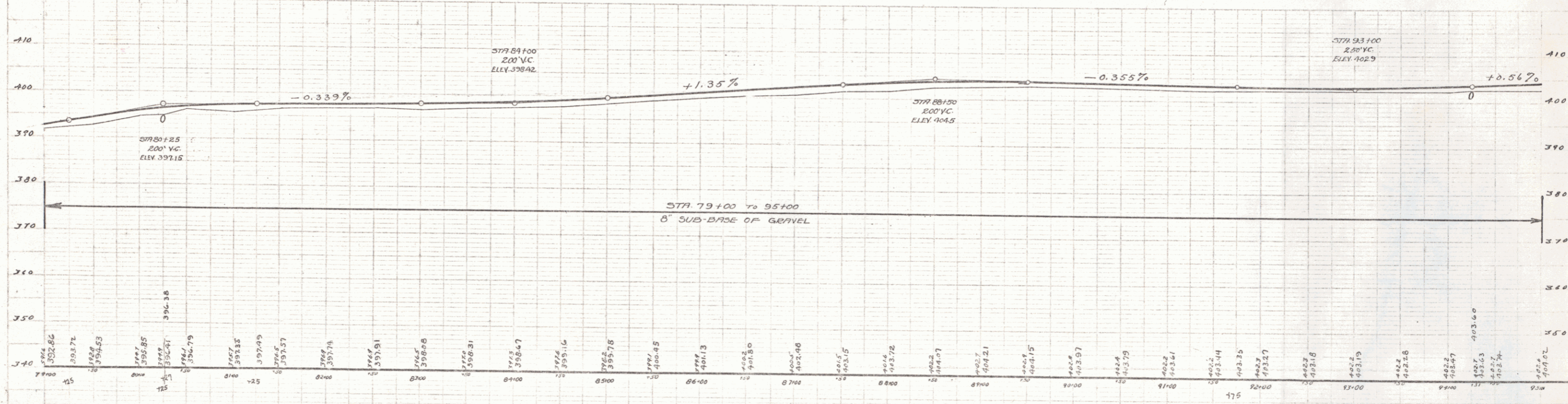
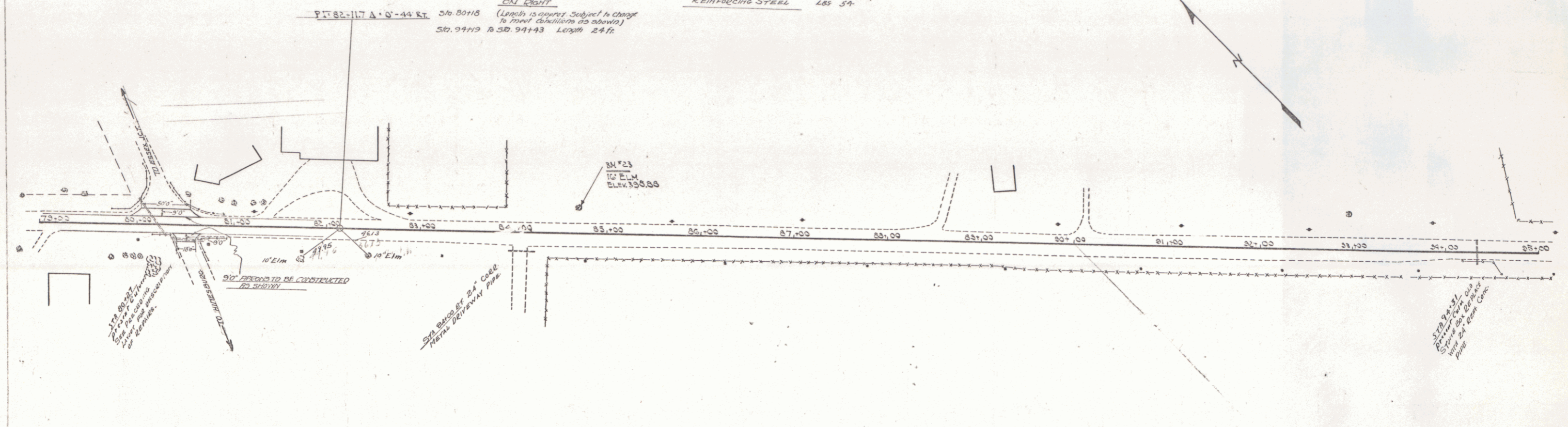
**WOOD GUARD RAIL REQUIRED**

**ON LEFT**  
 Sta. 79+88 (Length is approx Subject to Change in final construction drawing)  
 Sta. 94+19 to Sta. 94+43 Length 24 ft.

**ON RIGHT**  
 Sta. 80+18 (Length is approx Subject to Change in final construction drawing)  
 Sta. 94+19 to Sta. 94+43 Length 24 ft.

**NEW CULVERTS REQUIRED**  
 STA 81+00 BT 16 CORR METAL PIPE 24" DIA  
 CONCRETE CLASS B (124) 2700#  
 REIN. REBAR STEEL 3.3 LBS.  
 STA 94+31 24" REIN CONC PIPE Length 32 ft.  
 CONCRETE CLASS A (124) 4000 26 CUM. YD.  
 REINFORCING STEEL 485 LB.

**CULVERTS TO BE REPAIRED**  
 STA 80+27 AND RIGHT STA BUNTS  
 SEE PRECEDING LAYOUT SHEET FOR DESCRIPTION OF DAMAGES.



BM 23 18" ELM LT STA. 83+68 ELEV. 378.88

SERIES 60-B  
 Sheet 8 of 45