

128

WILLISTON BOOK 26 PAGE 112  
APP LIMIT OF SLOPE RIGHTS (FILL)  
ACQUIRED FROM ALBERT J. &  
MARIE R. HEBERT APRIL 10, 1956

GREEN MOUNTAIN  
POWER  
(TOWN LINE SUB)

ALLING REALTY CORP.  
GEORGE DANA ALLING, PRES.

PARCEL 1  
JAMES R. & VICTORIA G. EWING  
1A SLOPE RIGHTS (P) 11+50LT 13+43LT 7000 SF  
CULVERT & CHANNEL RIGHTS (P) 13+00LT 13+43LT  
1B SLOPE RIGHTS (P) 13+43LT 14+10LT 6000 SF  
CULVERT & CHANNEL RIGHTS (P) 13+43LT 13+65LT  
1C SLOPE RIGHTS (P) 13+68RT 15+20RT 5400 SF  
CULVERT & CHANNEL RIGHTS (P) 13+68RT 14+25RT  
REMARKS-UTILITIES TO COORDINATE WITH THE TOWN  
OF WILLISTON (WATER & ELECTRIC LINES) & GREEN  
MOUNTAIN POWER (POLES & POWER LINES)  
RECORDED: 3-21-73, WILLISTON, BK. 46, Pgs. 285-  
287 WD OF EASEMENT

POOR ORIGINAL COPY

117.54A 14.41  
51R 15' M.  
331.1 Sta 19.58  
Elev. 301.35

TOWNS OF SOUTH BURLINGTON  
WILLISTON  
Pin # 992105  
Project # BMA 6318  
Route US 2  
1/1/1974

PARCEL 2  
RAYMOND J. & MADELENE E. SYRIAC  
SLOPE RIGHTS (P) 12+90RT 13+90RT 5700 SF  
CULVERT & CHANNEL RIGHTS (P) 13+40RT 13+90RT  
REMARKS-UTILITIES TO COORDINATE WITH TOWN OF  
WILLISTON (WATER & ELECTRIC LINES) & GREEN  
MOUNTAIN POWER (POLES & POWER LINES)  
RECORDED: 2-23-73, SO. BURLINGTON, BK. 108, PG. 473-475  
WD OF EASEMENT

RAYMOND J. & MADELENE E.  
SYRIAC

FRANK E. HART

RIGHT-OF-WAY DIVISION  
TOWN FILE  
PERPETUAL  
Town of \_\_\_\_\_  
(To Be Returned To R.O.W. Division)

MP  
SOUTH BURLINGTON: 2.82-2.91  
WILLISTON: 0.00-3.93

Bridge #19 over Muddy Brook  
RIGHT OF WAY DETAILS

SR ④

INDEX OF SHEETS

SHEET NO.	TITLE PAGE
-	-2+3 TYPICAL CROSS-SECTION OF IMPROVEMENT
-	- PLAN AND PROFILE STA. 157+00 TO STA 170+00
- 5 -	- 170+00 - 186+00
- 6 -	- 186+00 - 202+00
- 7 -	- 202+00 - 218+00
- 8 -	- 218+00 - 232+00
- 9 -	- 232+00 - 246+00
- 10 -	- 246+00 - 262+00
- 11 -	- 262+00 - 276+00
- 12 -	- 276+00 - 292+00
- 13 -	- 292+00 - 306+00
- 14 -	- 306+00 - 320+00
- 15 -	- 320+00 - 334+00
- 16 -	- 334+00 - 348+00
- 17 -	- 348+00 - 357+69.3

STATE OF VERMONT  
STATE HIGHWAY DEPARTMENT

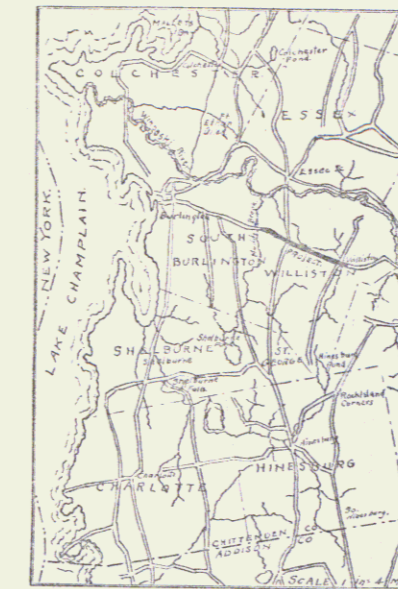
POOR ORIGINAL COPY

FED. AID DIST. NO.	STATE	FED. AID PROJ. NO.	YEAR	SHEET NO.	TOTAL SHEETS
3	Vt.				

PLAN AND PROFILE OF PROPOSED  
STATE HIGHWAY  
FEDERAL AID PROJECT

TOWN OF WILLISTON  
WILLISTON TURN PIKE  
FROM EAST END OF F.A.P. # 60 A.  
TO WILLISTON CEMETERY.

SCALES { PLAN 1 IN. = 50 FT.  
PROFILE HOR 1 IN. = 50 FT. VER. 1 IN. = 10 FT.  
CROSS SECTION 1 IN. = 5 FT.



RIGHT-OF-WAY DIVISION  
TOWN FILE  
PERPETUAL  
HOME OF US 2  
[To Be Returned To R.O.W. Division]  
Not Constructed

CONVENTIONAL SIGNS

COUNTY LINE	GROUND ELEVATION	DATE	SCALE
TOWN LINE	GRADE ELEVATION	DATE	SCALE
FENCE LINE			
STONE WALL			
UNFENCED PROPERTY			
CHARR RAIL			
TRAVELED WAY			
RAILROAD			
RETAINING WALL			
CENTERLINE			
SURVEY LINE			
CULVERT			
DROP INLET			
TROLLEY POLE			
POWER POLE			
TELEPHONE POLE			
TREES			
WEDGE			

CURVE DATA

DEFLECTION ANGLE	Δ
DEGREE OF CURVE	D.
RADIUS OF CURVE	R.
TANGENT DISTANCE	T.
LENGTH OF CURVE	L.
EXTERNAL DISTANCE	E.
POINT OF INTERSECTION P.I.	P.I.
POINT OF CURVE	P.C.
POINT OF TANGENT	P.T.

Williston Turnpike

LAY-OUT 1 IN. = 1000 FT.

01/06/29

SUBMITTED BY ORDER OF THE STATE HIGHWAY BOARD

CHIEF ENGINEER  
DEPARTMENT OF HIGHWAYS

RECOMMENDED

RECOMMENDED FOR APPROVAL

APPROVED

SERIES F No. 008 FILED  
SHEET 0 OF

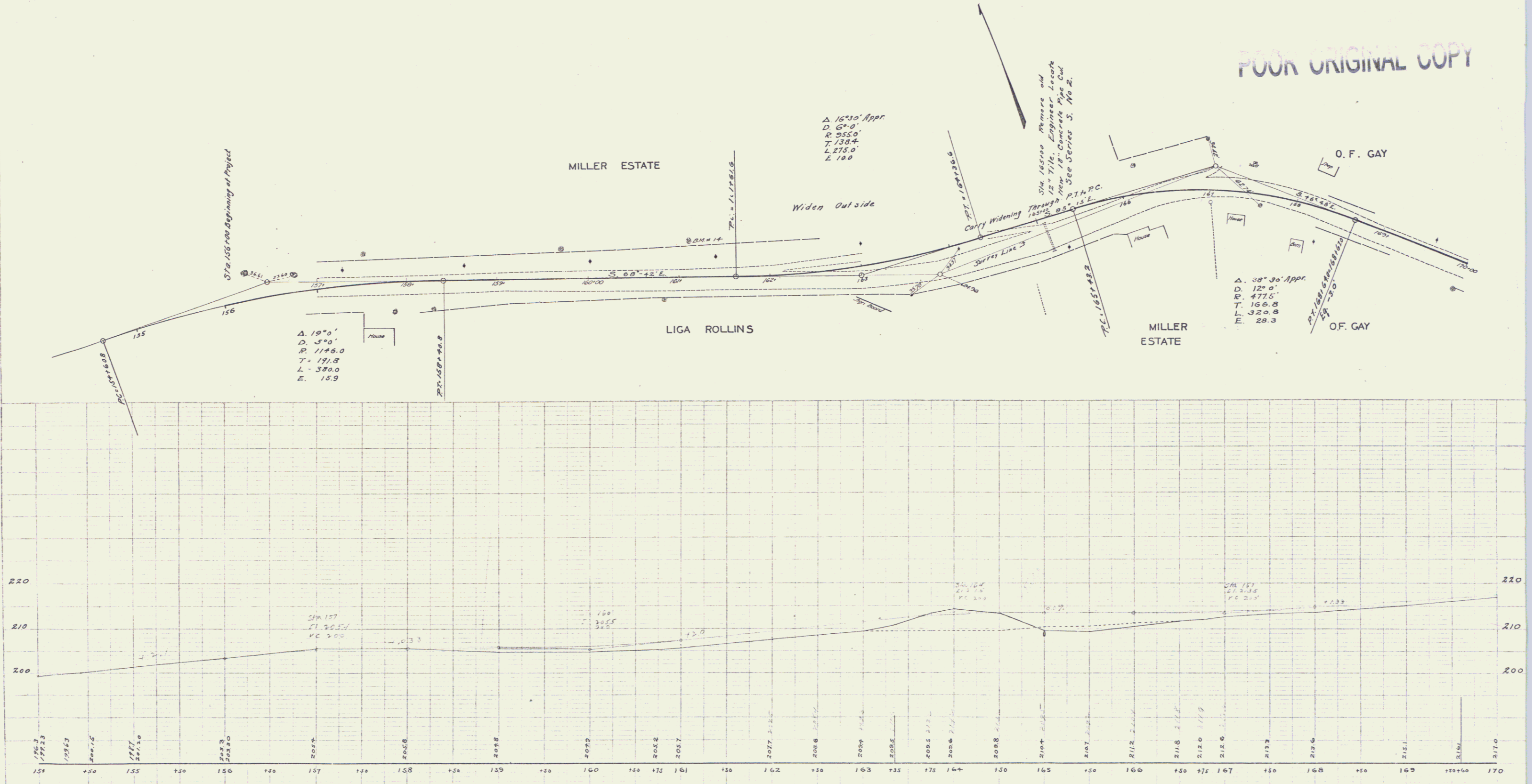
DIST. # 5 PLANS 2

GUARD RAIL REQUIRED.  
ON LEFT  
Sta. 165+38 to Sta. 165+62 Length 24 ft.  
ON RIGHT  
Sta. 165+36 to Sta. 165+60 Length 24 ft.  
Total This Sheet 48 ft.

NEW CULVERTS REQUIRED.  
Sta. 165+50 18" Concrete Pipe 36 ft  
1-2'-5" Concrete. 2.3 Cuyd.

REV.	NO.	DATE	BY	CHKD.	TOTAL SHEETS

POOR ORIGINAL COPY



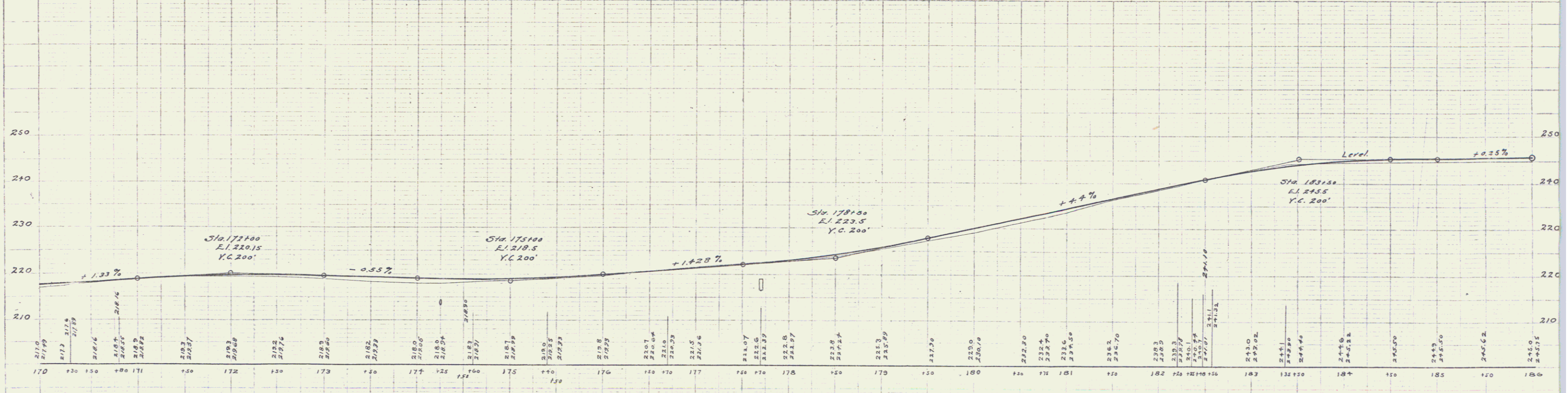
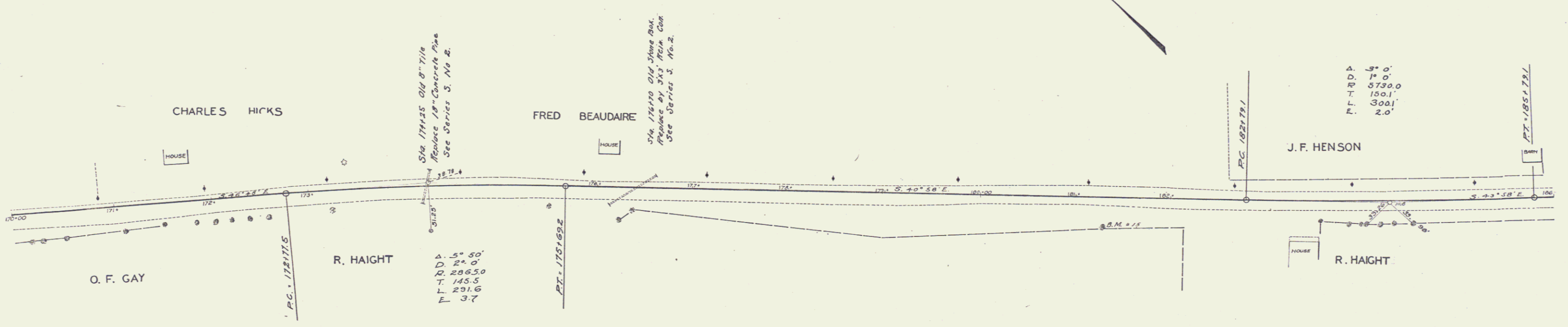
B.M. # 13 Spike in Vault on right of Sta. 151+40 Elev. 200.11  
B.M. # 14 Spike in Elm on left of Sta. 161+11 Elev. 207.20

Series 7 No. 60 R.  
Sheet 2 of 3

GUARD RAIL REQUIRED.  
ON LEFT  
Sta. 174+13 to Sta. 174+37 Length 24 ft.  
" 174+58 " 174+82 " 24 "  
ON RIGHT  
Sta. 174+13 to Sta. 174+37 Length 24 ft.  
" 174+58 " 174+82 " 24 "  
Total This Sheet 96 "

NEW CULVERTS REQUIRED.  
Sta. 174+25 18" Concrete Pipe 3+ ft.  
1-2 1/2" Concrete 270 Cu Yds.  
Sta. 176+70 3'x3' Concrete Box Reinforced  
1-2" Concrete 3.7 Cu Yds.  
1-2 1/2" Concrete 12.1 " "  
Reinforced Steel 130 #

FEEL ROAD	DATE	BY	SCALE	SHEET	OF

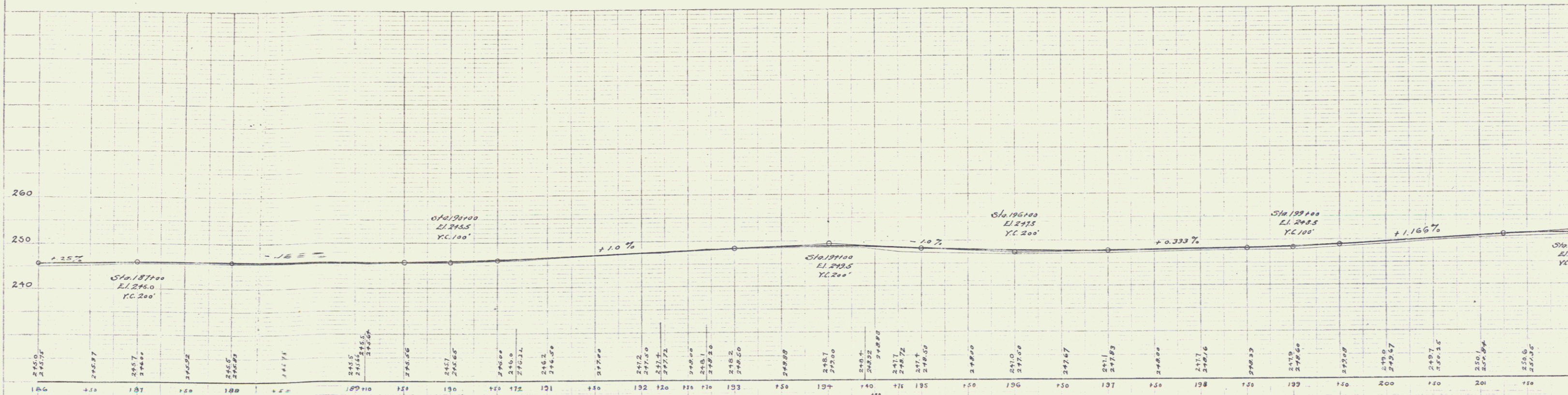
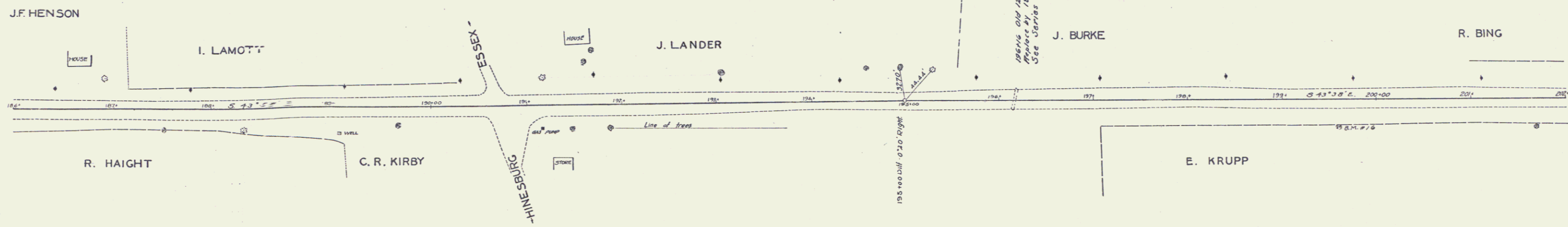


Series T No 60 B  
Sheet 3 of 4

GUARD RAIL REQUIRED.  
ON LEFT.  
Sta. 195+88 to Sta. 196+12 Length 24 ft  
ON RIGHT.  
Sta. 195+88 to Sta. 196+12 Length 24 ft  
Total This Sheet 48 ft.

NEW CULVERTS REQUIRED.  
Sta. 196+00 18" Concrete Pipe 32 ft.  
1-2 1/2" Concrete 2.3 Cu Yds.

FED. ROAD DIST. NO. 100.000 SHEET NO. 100.000 TOTAL SHEETS 100.000



B.M. # 16 - 15' Elm on Right of Sta. 199+00 = 5.10x 249.92

Series No. 608  
Sheet 4 of 10

5

**GUARD RAIL REQUIRED.**

ON LEFT

Sta 203133	1/2 Sta 203183	Length	24 ft.
203105	203129		24 "

ON RIGHT

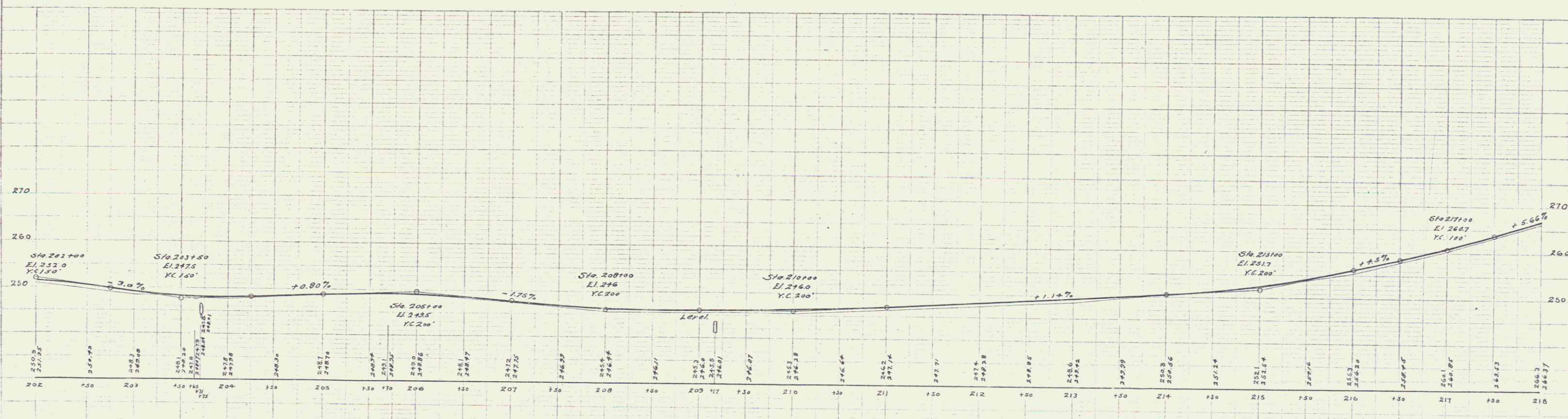
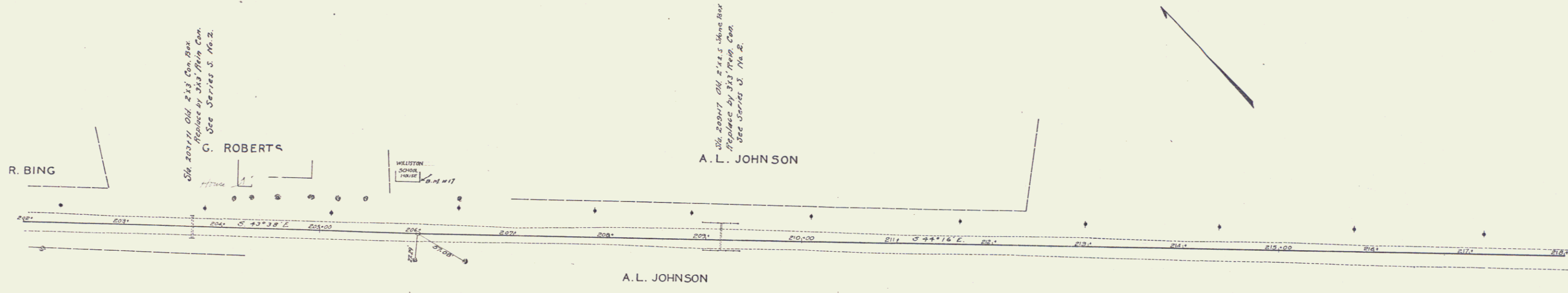
Sta 203133	1/2 Sta 203183	Length	24 ft.
203105	203129		24 "

Total This Sheet 96'

**NEW CULVERTS REQUIRED.**

Sta. 203171	3'x3' Conc. Box Reinforced.
	1-2-4 Concrete 3.8 Cu Yds.
	1-2 1/2-5 Concrete 12.4 Cu Yds.
	Reinforced Steel 193'
Sta. 203177	3'x3' Conc. Box Reinforced.
	1-2-4 Concrete 3.8 Cu Yds.
	1-2 1/2-5 Concrete 12.3 Cu Yds.
	Reinforced Steel 193'

NO.	DATE	BY	SCALE	SHEET	TOTAL
1				5	11



B.M. #17 Top of Foundation at South Corner of School House on left of Sta. 206100 Elev. 251.80

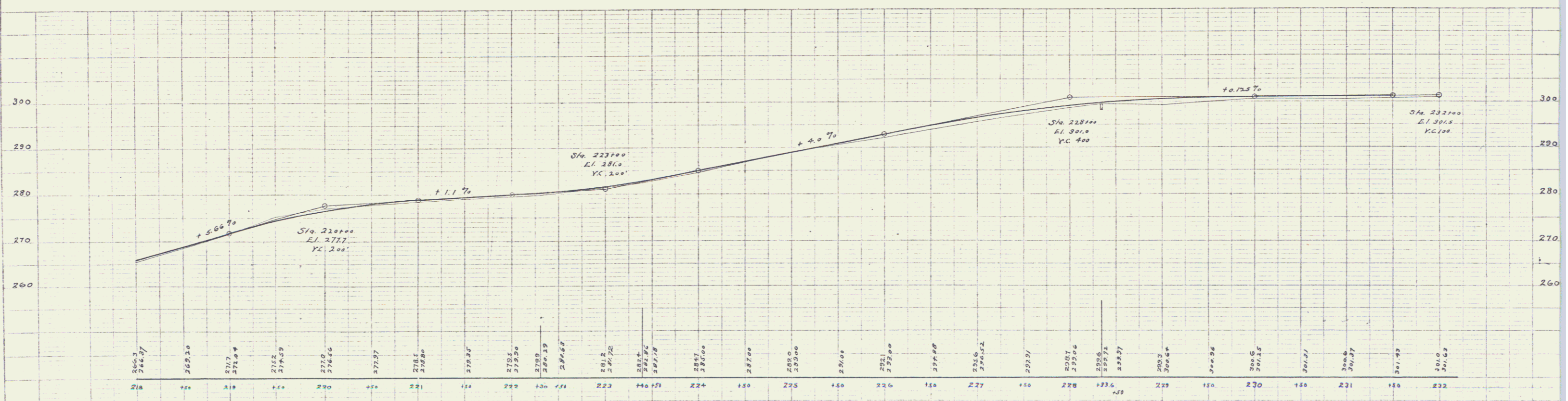
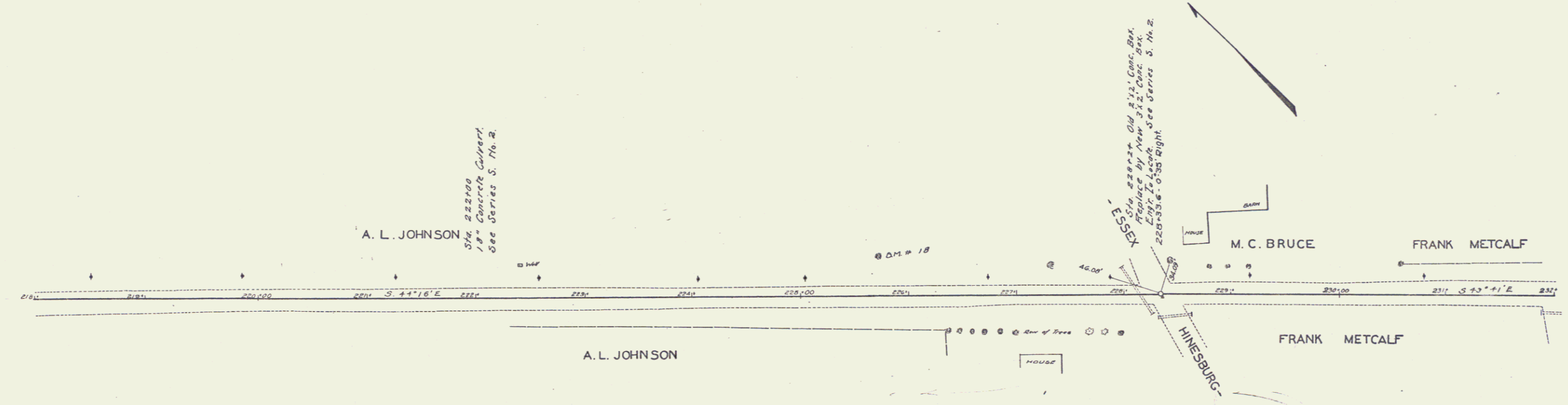
Series No. 60 B  
Sheet 5 of 11

6

**GUARD RAIL REQUIRED.**  
 ON LEFT  
 Sta 221+88 to Sta 222+12 Length 24 ft  
 " 223+12 " " 228+36 " 24 ft  
 ON RIGHT  
 Sta 221+88 to Sta 222+12 Length 24 ft  
 " 228+18 " " 228+42 " 24 ft  
 Total This Sheet 96 ft

**NEW CULVERTS REQUIRED.**  
 Sta 222+00 - 18" Concrete Pipe 32 ft  
 " 1-2 1/2" Concrete 23 Cu Yds.  
 Sta 228+24 - 3' x 2' Cont. Box Reinforced.  
 " 1-2' 4" Concrete 6.9 Cu Yds.  
 " 1-2 1/2" Concrete 13.1 " "  
 Reinforcing Steel 314'

FILE NO.	DATE	BY	NO.	TOTAL SHEETS



B.M. 18 Spike in 15" Elm left of Sta. 223+72 Elev. 293.73

Series S  
 Sheet 6 of 6  
 No. 608

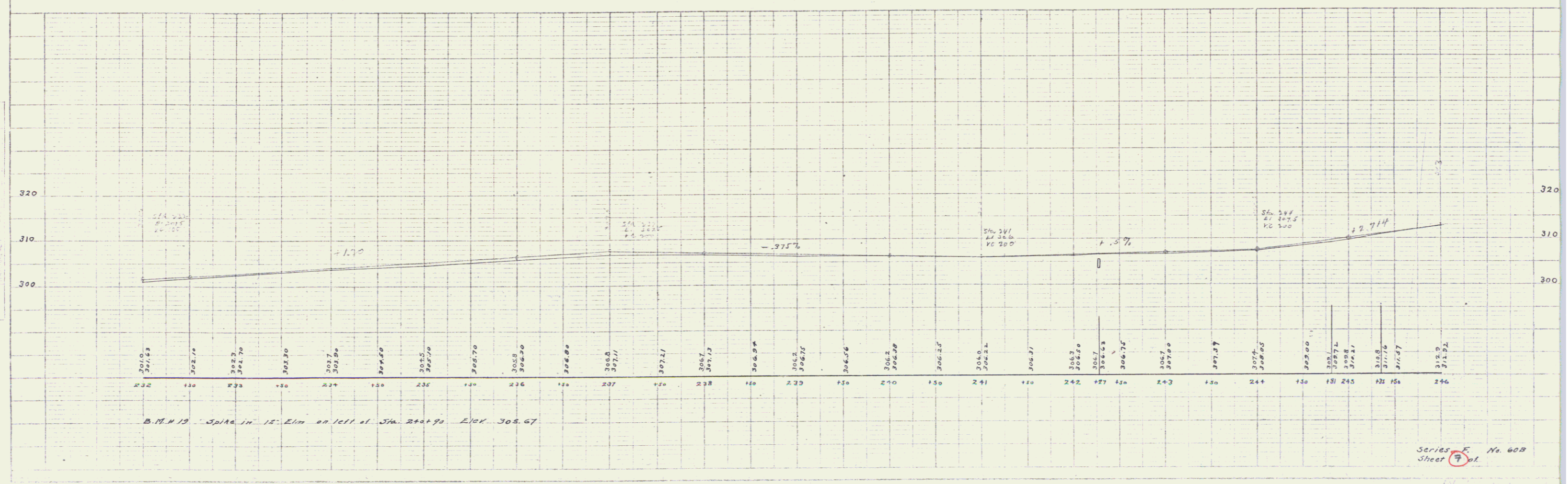
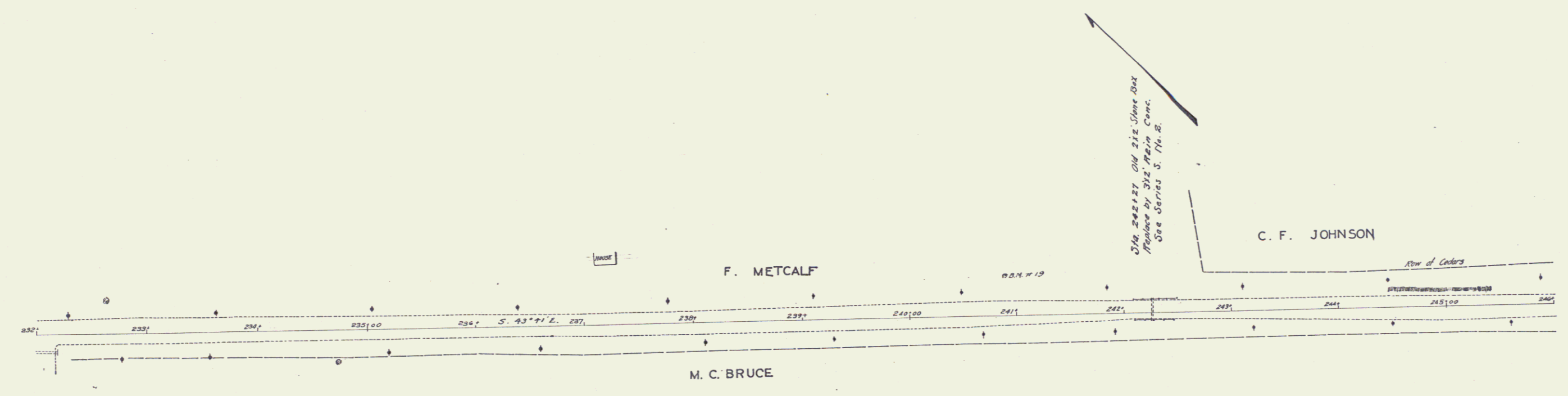
**GUARD RAIL REQUIRED.**  
 ON LEFT  
 Sta. 242+15 to Sta. 242+30 Length 15 ft  
 ON RIGHT  
 Sta. 242+15 to Sta. 242+30 Length 15 ft  
 Total This Sheet 48 ft

**NEW CULVERTS REQUIRED.**  
 Sta. 242+27 3'x2' Conc. Box Reinforced  
 1-2" Concrete 3.7 Cu Yds.  
 1-2% Concrete 0.8 Cu Yds.  
 Reinforcing Steel 130#

PL. REVISIONS  
 NO. 1  
 NO. 2  
 NO. 3

PLAN  
 SCALE  
 DATE

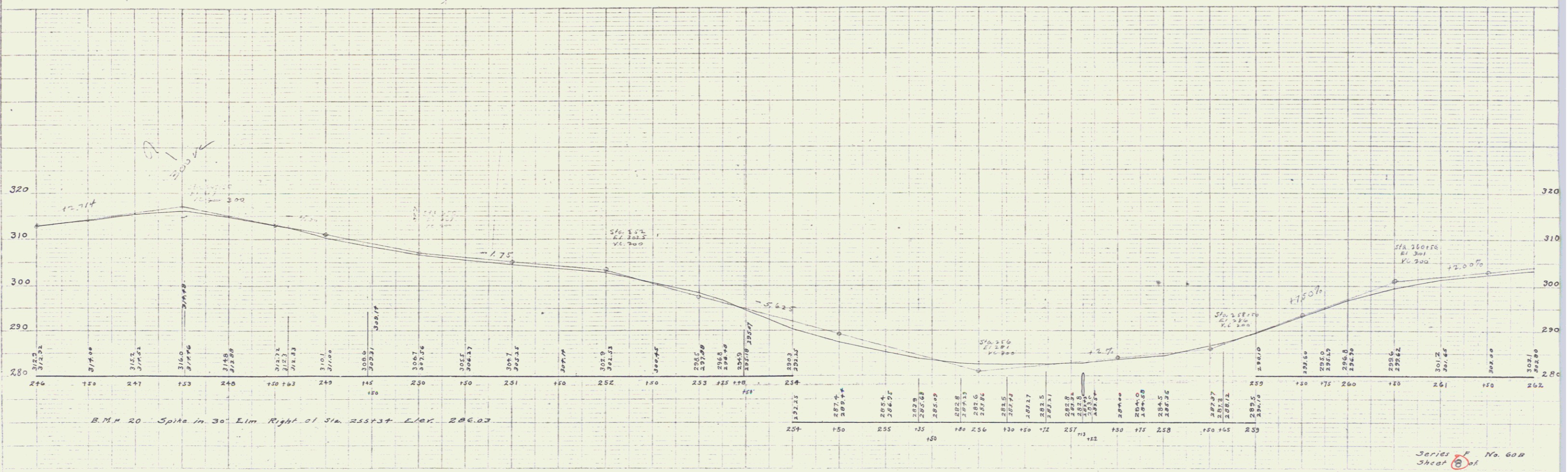
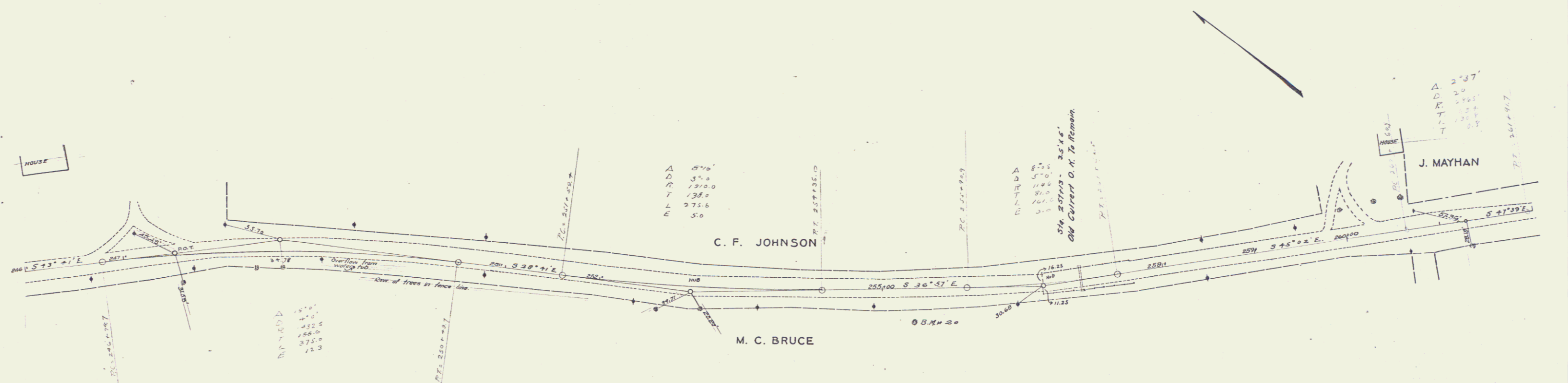
Vertical Curve  
 Length  
 Stationing



Series S. No. 608  
 Sheet 7 of 8

GUARD RAIL REQUIRED  
 ON LEFT  
 Sta 257+00 to Sta 257+24 Length 24 ft  
 ON RIGHT  
 Sta 258+72 to Sta 258+32 Length 40 ft  
 Total This Sheet 184 ft

NO.	DATE	BY	REVISION
1			
2			
3			

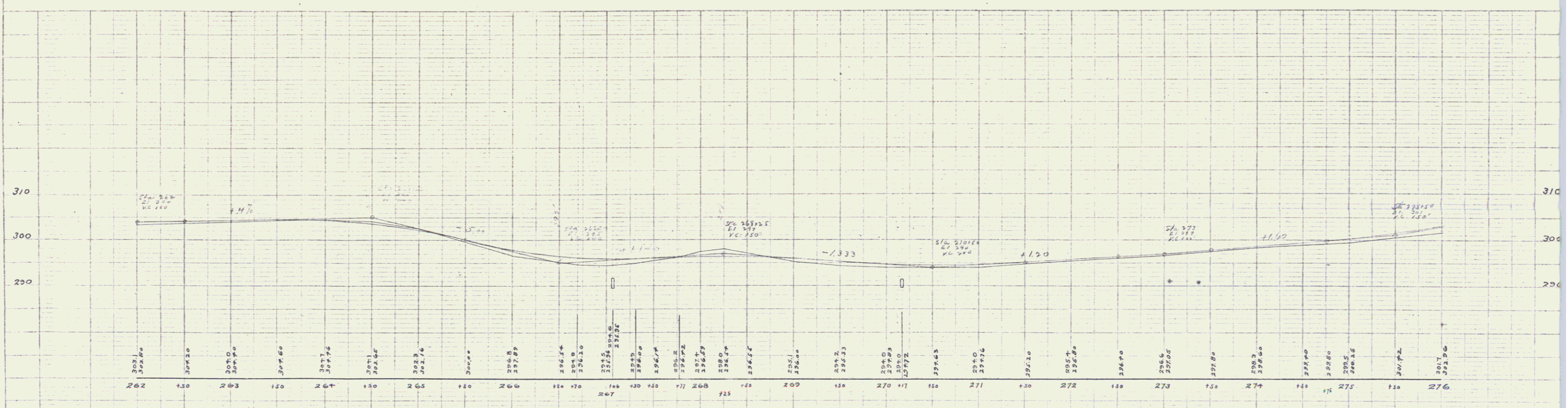
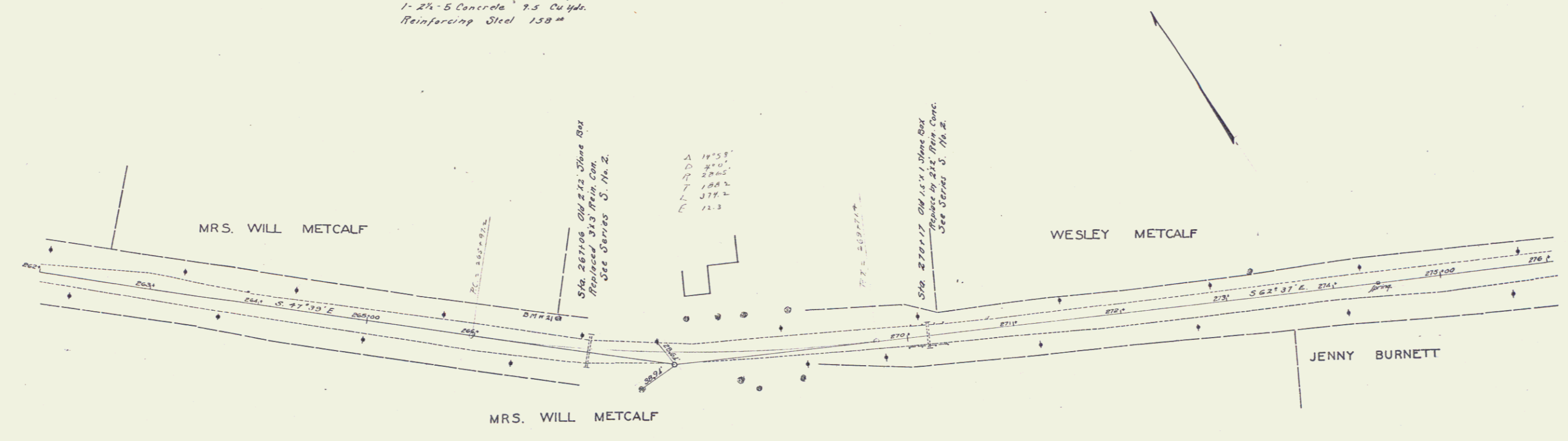


Series # No. 604  
 Sheet 8 of 9

**GUARD RAIL REQUIRED.**  
 ON LEFT  
 Sta 266+76 to Sta 267+24 Length 48 ft  
 " 270+05 " " 270+29 Length 24 ft  
 ON RIGHT  
 Sta 266+86 to Sta 267+18 Length 32 ft  
 " 270+05 " " 270+29 " 24 ft  
 Total This Street 128 "

**NEW CULVERTS REQUIRED.**  
 Sta 267+06 3'x3' Conc. Box Reinforced  
 1-2" Concrete 4.8 Cu Yds.  
 1-2 1/2" Concrete 14.8 Cu Yds.  
 Reinforcing Steel 290#  
 Sta 270+17 2'x2' Conc. Box Reinforced  
 1-2" Concrete 3.6 Cu Yds.  
 1-2 1/2" Concrete 9.5 Cu Yds.  
 Reinforcing Steel 150#

REVISION	DATE	BY	CHKD	APP'D



B.M. 21 Spike in 24" Elm 1011.1 Sta. 266+68 Elev. 293.42

Series F No. 600  
 Sheet 9 of 10

**GUARD RAIL REQUIRED.**

ON LEFT			
Sta 282+71	to Sta. 283+59	Length 128 ft.	
" 287+71	" " 288+53	" 88 "	
" 287+65	" " 290+45	" 80 "	
ON RIGHT			
Sta 282+71	to Sta. 283+53	Length 128 ft.	
" 283+65	" " 290+13	" 48 "	
		Total This Sheet	472 "

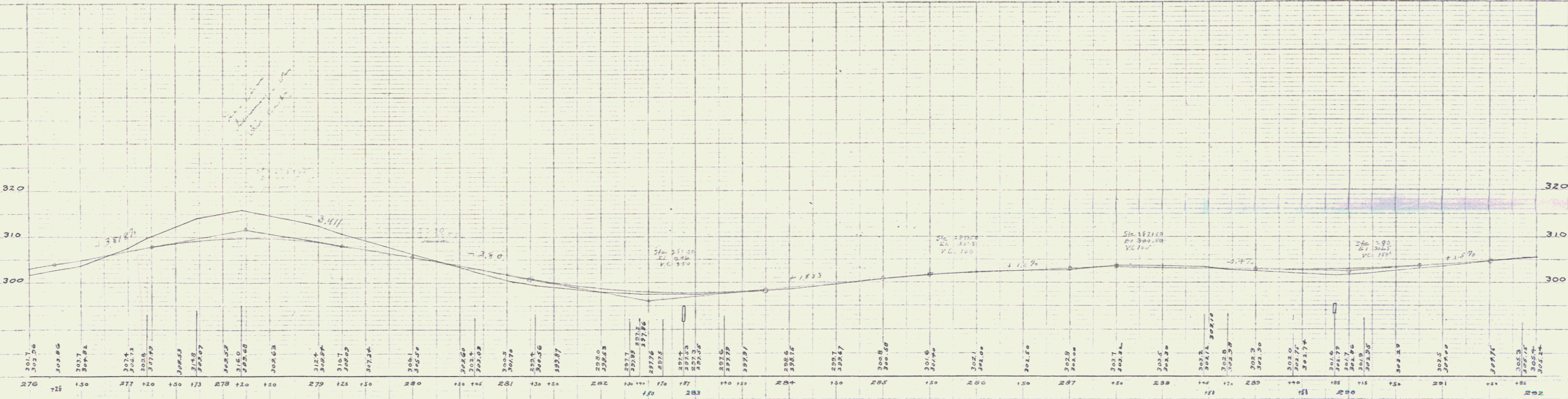
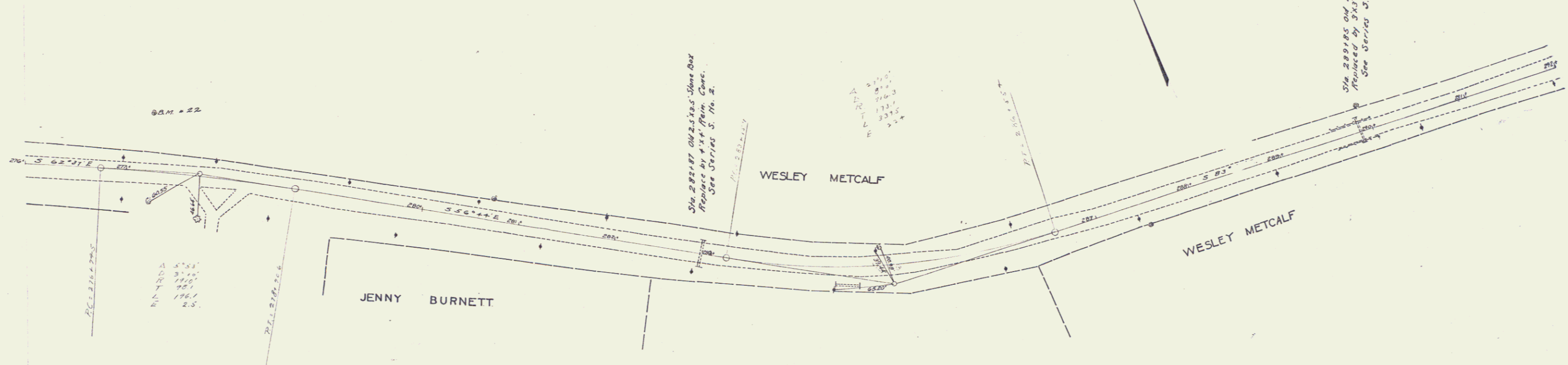
**NEW CULVERTS REQUIRED.**

Sta 282+87	4'x4' Conc. Box Reinforced.
	1-2' Concrete 4.8 Cu Yds.
	1-2 1/2' Concrete 17.5 Cu Yds.
	Reinforcing Steel 330 "
Sta 287+85	3'x3' Conc. Box Reinforced.
	1-2' Concrete 4.9 Cu Yds.
	1-2 1/2' Concrete 15.2 Cu Yds.
	Reinforcing Steel 255 "

**SUB-BASE REQUIRED.**

Sta. 278+50	to Sta. 279+00	Length 50 ft
" 283+88	" " 292+00	" 212 "
		Total This Sheet
		262 "

PLAN	PROF	ADJ	TOTAL	SHEET	TOTAL SHEETS
1	1	0	2	10	10



B.M. # 22 Spike in 15" Elm left of Sta. 277+22 Elev. 312.45

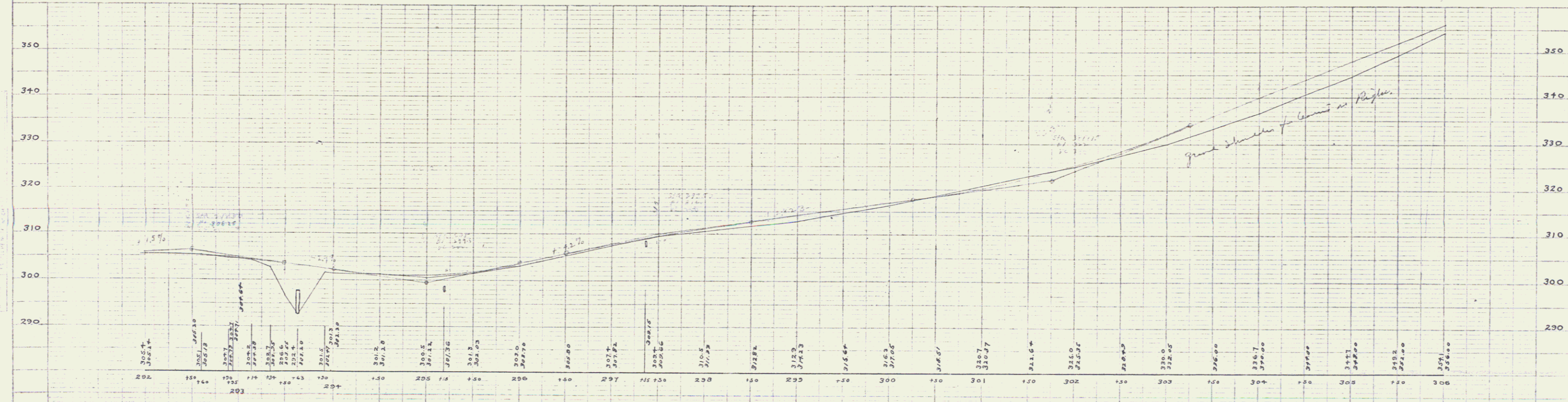
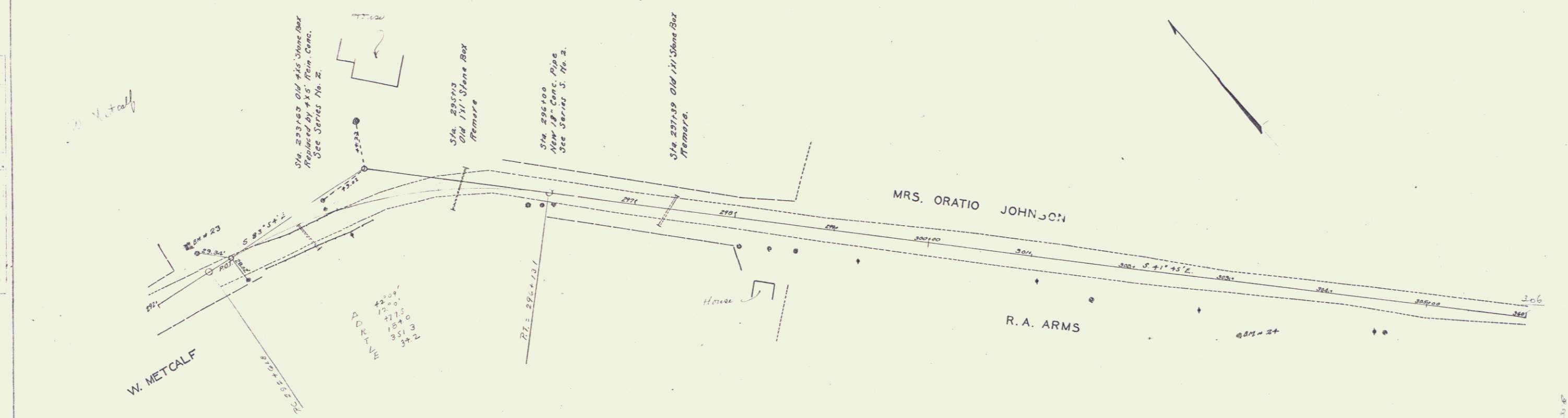
10

**GUARD RAIL REQUIRED.**  
 ON LEFT.  
 Sta. 293+34 to Sta. 294+22 Length 88 ft.  
 " 295+88 " " 296+12 " 24 "  
 ON RIGHT  
 Sta. 292+52 to Sta. 296+16 Length 264 ft.  
 Total This Sheet 376 "

**NEW CULVERTS REQUIRED.**  
 Sta. 293+96 4'x5' Concrete Box Reinforced.  
 1-2-4 Concrete 5.3 Cu Yds.  
 1-2 1/2-5 Concrete 21.8 Cu Yds.  
 Reinforcing Steel 351 #  
 Sta. 296+00 18" Concrete Pipe 32 ft.  
 1-2 1/2-5 Concrete 2.3 Cu Yds.

**SUB-BASE REQUIRED.**  
 Sta. 292+00 to Sta. 293+02 Length 62 ft.  
 " 296+13 " " 297+35 " 122 "  
 Total on This Sheet 174 "

11. ROADWAY LATERAL CLEARANCE SHEET  
 DIST. FROM CENTERLINE TO CLEARANCE POINT  
 3 1/2'



B.M. 23 Drill Hole in ledge left of Sta. 292+16 Elev. 307.55  
 B.M. 24 Spike in 2" Elm Right of Sta. 303+15 Elev. 332.23

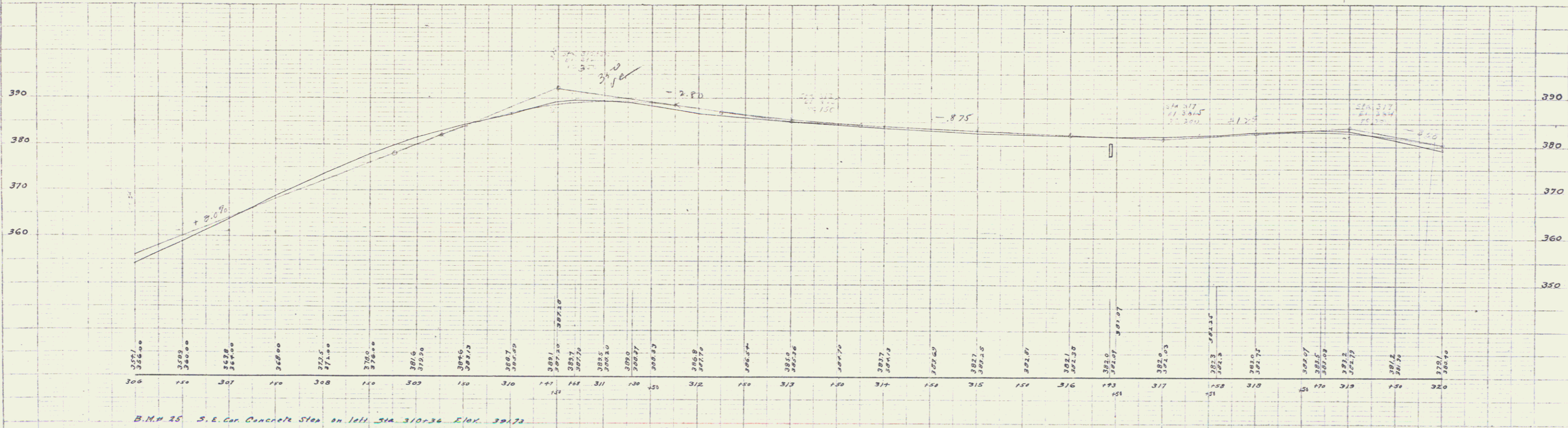
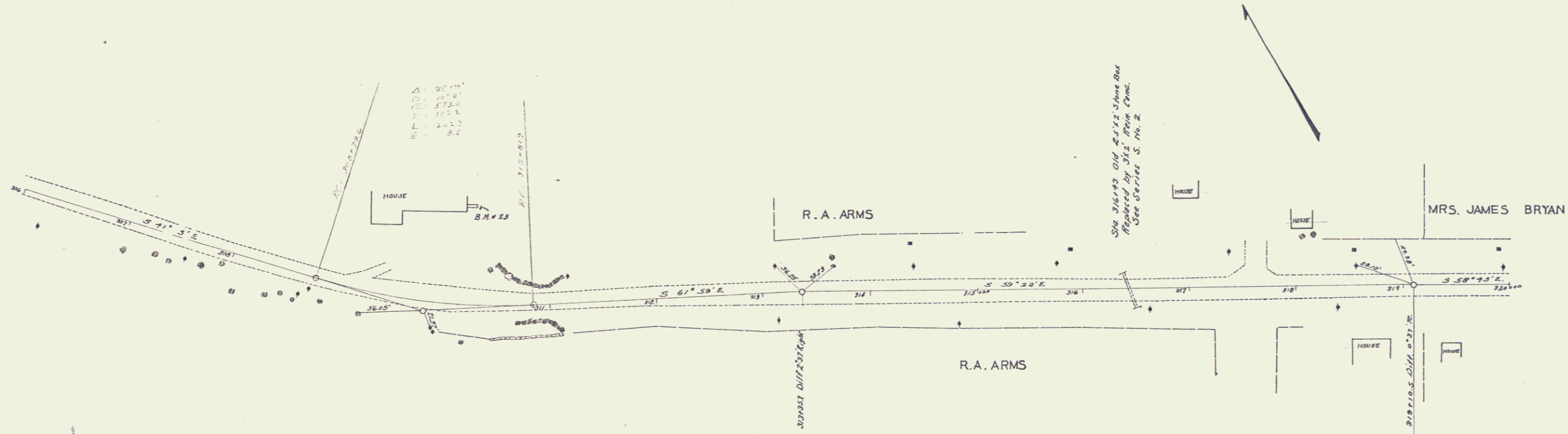
Series F No. 60B  
 Sheet 12 of 12

GUARD RAIL REQUIRED.  
ON LEFT.  
Sta. 316+31 to Sta. 316+55 Length 24 ft.  
ON RIGHT  
Sta. 316+51 to Sta. 316+55 Length 24 ft.  
Total This Sheet 48 ft.

NEW CULVERTS REQUIRED.  
Sta. 316+43 3x2' Concrete Box Reinforced  
1-2' Concrete 3.9 Cu Yds.  
1-2 1/2' Concrete 9.2 Cu Yds.  
Reinforcing Steel 203#

SUB-BASE REQUIRED.  
Sta. 318+00 to Sta. 319+00 Length 100 ft.

SCALE: HORIZONTAL 1" = 40' VERTICAL 1" = 10'  
SHEET NO. 12 OF 14  
DATE: 1917



Series No. 608  
Sheet 12



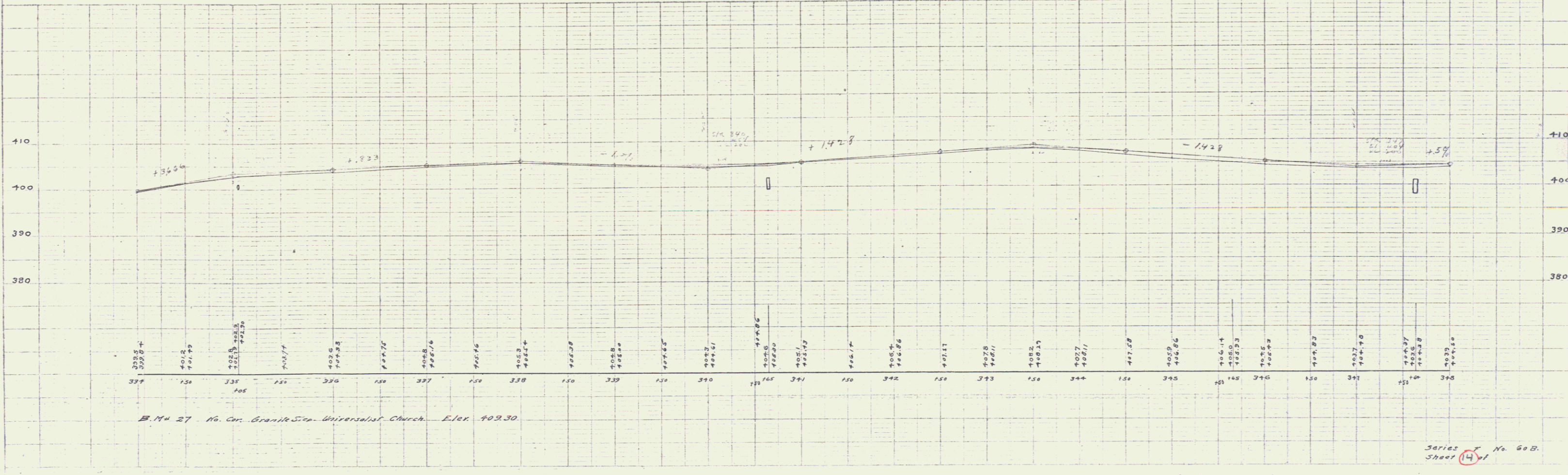
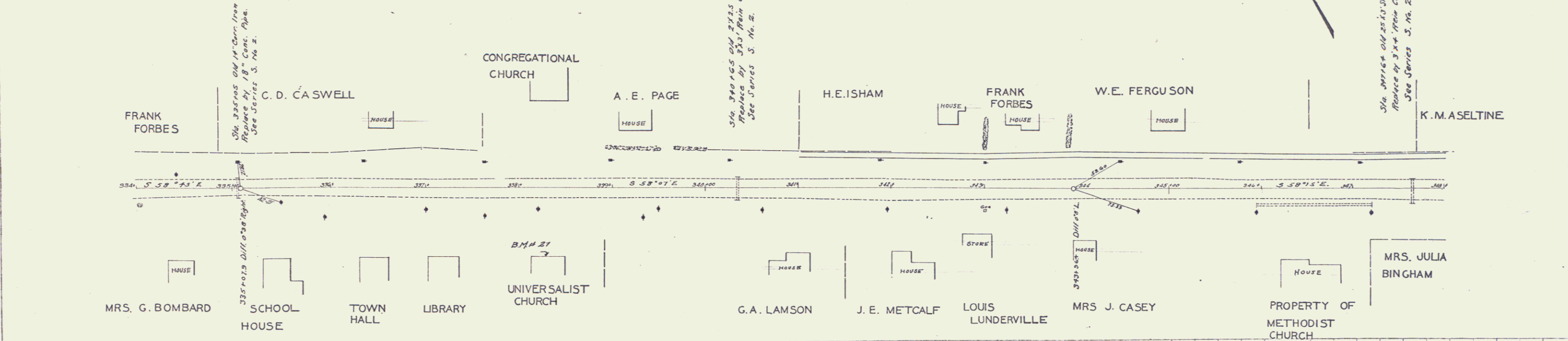
**GUARD RAIL REQUIRED.**

ON LEFT		
Sta. 334+133	To Sta. 335+117	Length 24 ft.
" 340+53	" " 340+77	" 24 "
" 347+136	" " 347+84	" 48 "
ON RIGHT		
Sta. 334+133	To Sta. 335+117	Length 24 ft.
" 340+53	" " 340+77	" 24 "
" 347+136	" " 347+84	" 24 "
Total This Sheet		168 "

**NEW CULVERTS REQUIRED.**

Sta. 335+05	18" Concrete Pipe 30 ft.
Sta. 340+65	1- 2 1/2' Concrete 2.3 Cu yds.
	3'x3' Conc. Box Reinforced
	1- 2' Concrete 3.8 Cu yds.
	1- 2 1/2' Concrete 12.4 Cu yds.
	Reinforcing Steel 197 #
Sta. 347+64	3'x4' Conc. Box Reinforced.
	1- 2' Concrete 4.5 Cu yds.
	1- 2 1/2' Concrete 10.3 Cu yds.
	Reinforcing Steel 232 #

NO.	REVISED	SCALE	SHEET	TOTAL
1			14	14

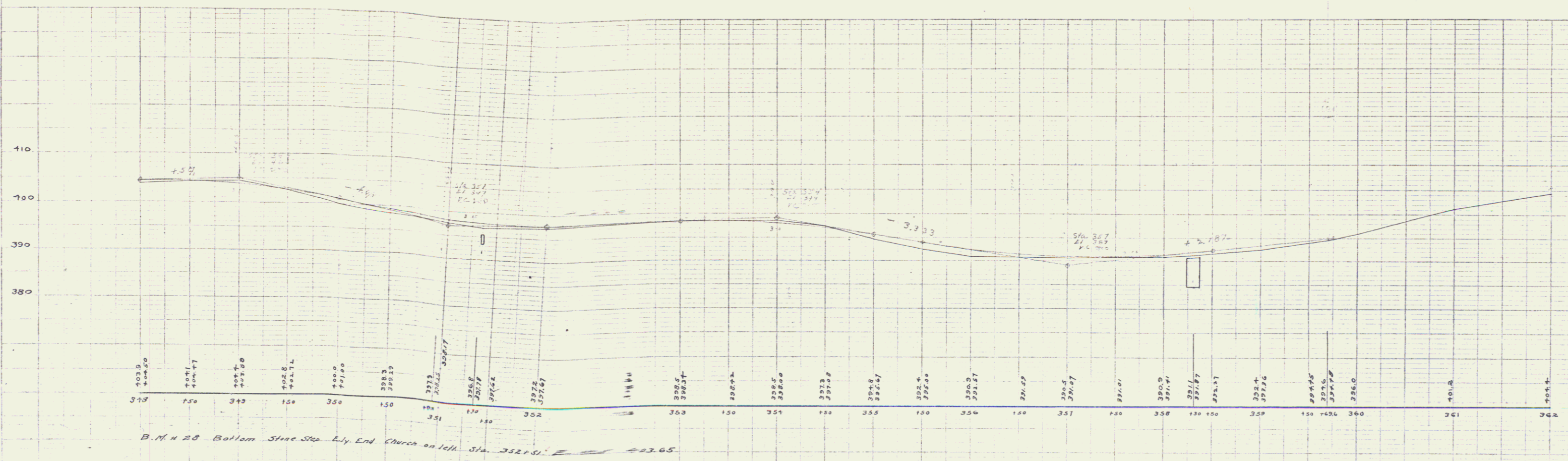
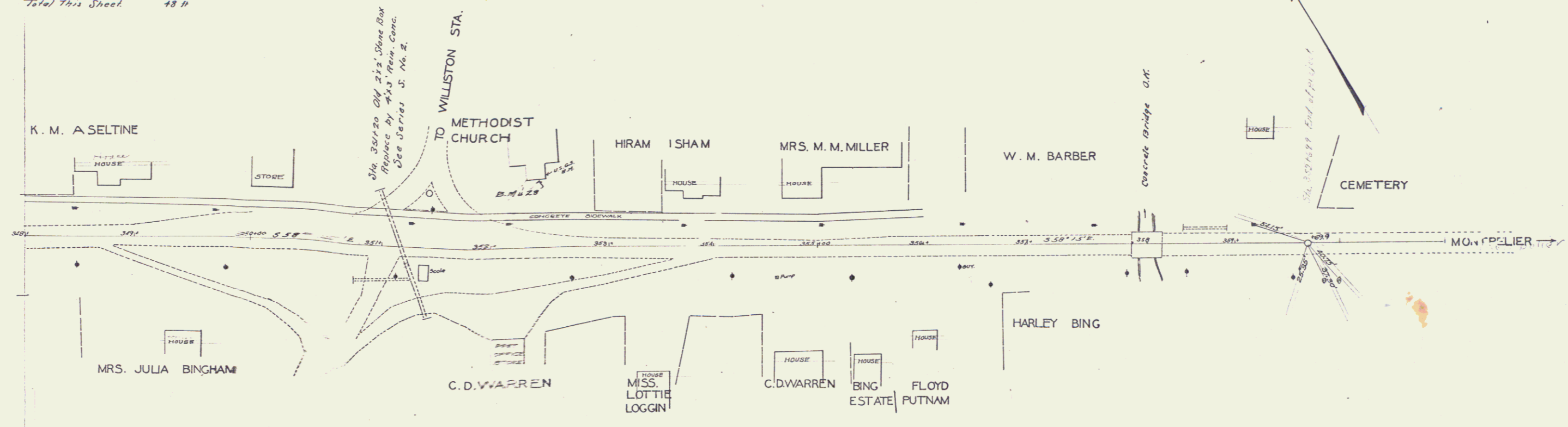


Series No. 608.  
Sheet 14 of 14

**GUARD RAIL REQUIRED.**  
 ON LEFT  
 Sta 357+29 to Sta 358+07 Length 12 H.  
 " 358+20 " " 358+32 " 12 "  
 ON RIGHT  
 Sta 357+33 to Sta 358+07 Length 12 H.  
 " 358+20 " " 358+32 " 12 "  
 Total This Sheet 48 H.

**NEW CULVERTS REQUIRED.**  
 Sta 351+20 4'x3' Conc. Box Reinforced.  
 1-2-4' Concrete 16.6 Cu Yds.  
 1-28-5 Concrete 39.7 "  
 Reinforcing Steel 1213 #

PLAN	SECTION	FIGURE	SHEET	TOTAL
15			15	15



Series F No. 82  
 Sheet 15 of 15

16