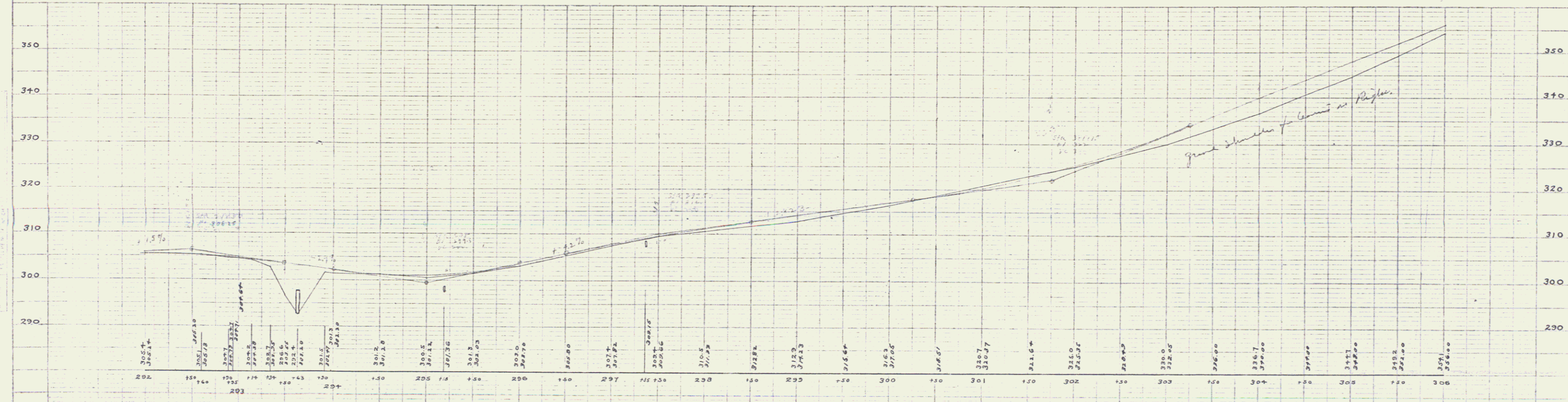
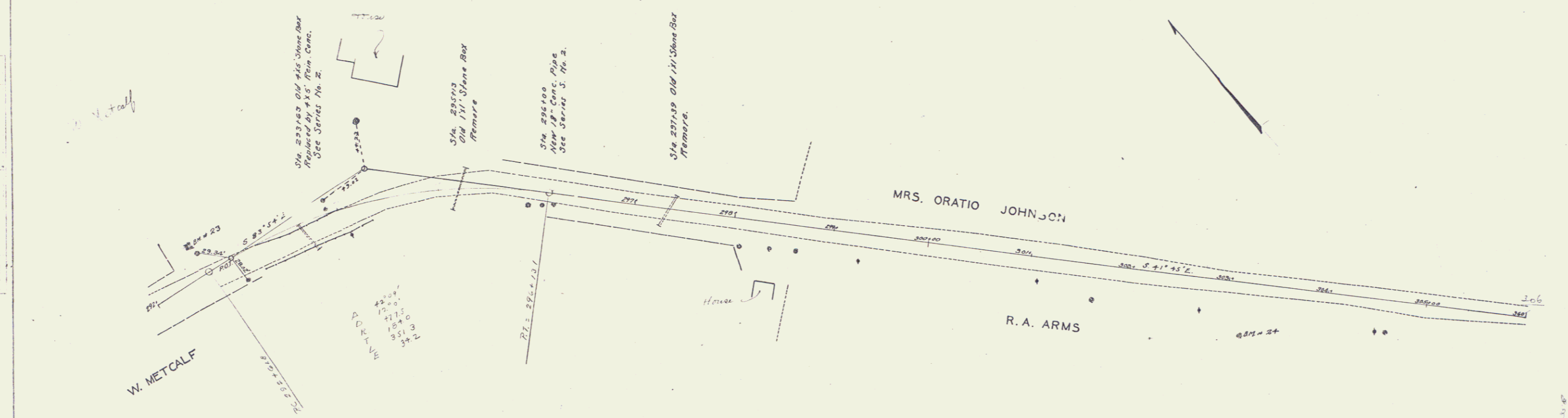


GUARD RAIL REQUIRED.
 ON LEFT.
 Sta. 293+34 to Sta. 294+22 Length 88 ft.
 " 295+88 " " 296+12 " 24 "
 ON RIGHT
 Sta. 292+52 to Sta. 296+16 Length 264 ft.
 Total This Sheet 376 "

NEW CULVERTS REQUIRED.
 Sta. 293+96 4'x5' Concrete Box Reinforced.
 1-2-4 Concrete 5.3 Cu Yds.
 1-2 1/2-5 Concrete 21.8 Cu Yds.
 Reinforcing Steel 351 #
 Sta. 296+00 18" Concrete Pipe 32 ft.
 1-2 1/2-5 Concrete 2.3 Cu Yds.

SUB-BASE REQUIRED.
 Sta. 292+00 to Sta. 293+02 Length 62 ft.
 " 296+13 " " 297+35 " 112 "
 Total on This Sheet 174 "

11. ROAD DISTRICT 4. SHEET NO. 12
 DISTRICT ENGINEER
 1917



B.M. 23 Drill Hole in ledge left of Sta. 292+16 Elev. 307.55
 B.M. 24 Spike in 2" Elm Right of Sta. 303+15 Elev. 332.23

Series F No. 60B
 Sheet 12 of 12