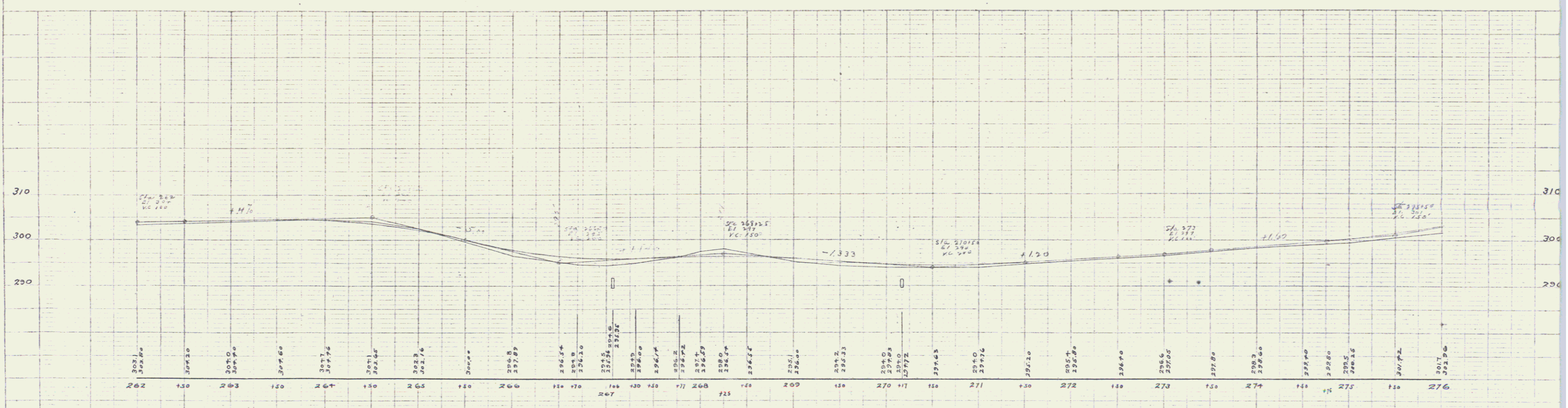
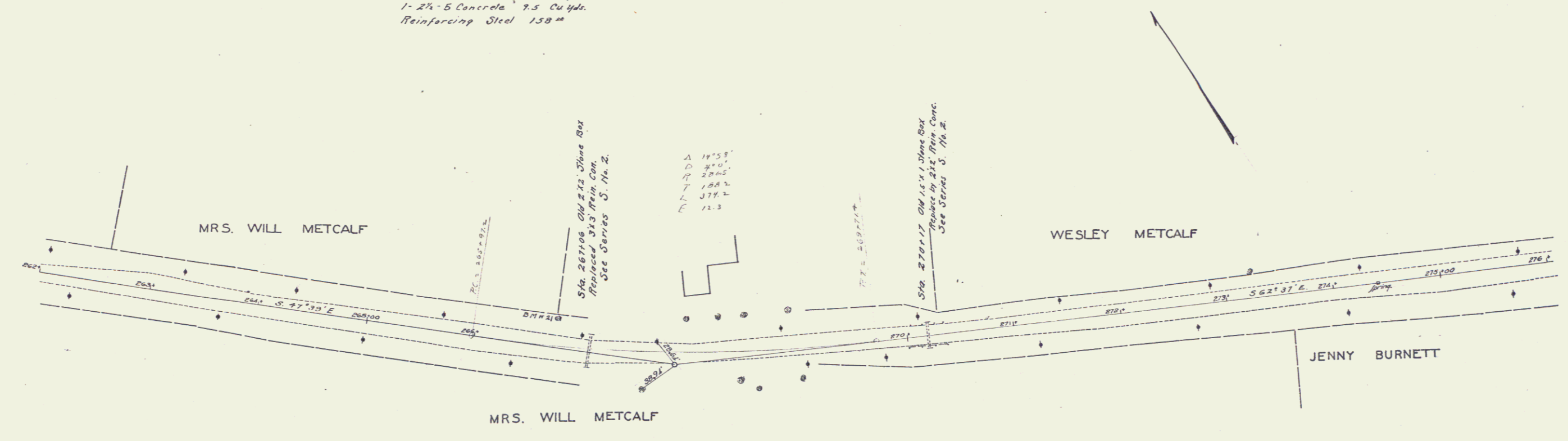


GUARD RAIL REQUIRED.
 ON LEFT
 Sta 266+76 to Sta 267+24 Length 48 ft
 " 270+05 " " 270+29 Length 24 ft
 ON RIGHT
 Sta 266+86 to Sta 267+18 Length 32 ft
 " 270+05 " " 270+29 " 24 ft
 Total This Street 128 "

NEW CULVERTS REQUIRED.
 Sta 267+06 3'x3' Conc. Box Reinforced
 1-2" Concrete 4.8 Cu Yds.
 1-2 1/2" Concrete 14.8 Cu Yds.
 Reinforcing Steel 290#
 Sta 270+17 2'x2' Conc. Box Reinforced
 1-2" Concrete 3.6 Cu Yds.
 1-2 1/2" Concrete 9.5 Cu Yds.
 Reinforcing Steel 150#

REVISION	DATE	BY	CHKD	APP'D



B.M. 21 Spike in 24" Elm 1011.1 Sta. 266+68 Elev. 293.42

Series F No. 600
 Sheet 9 of 10