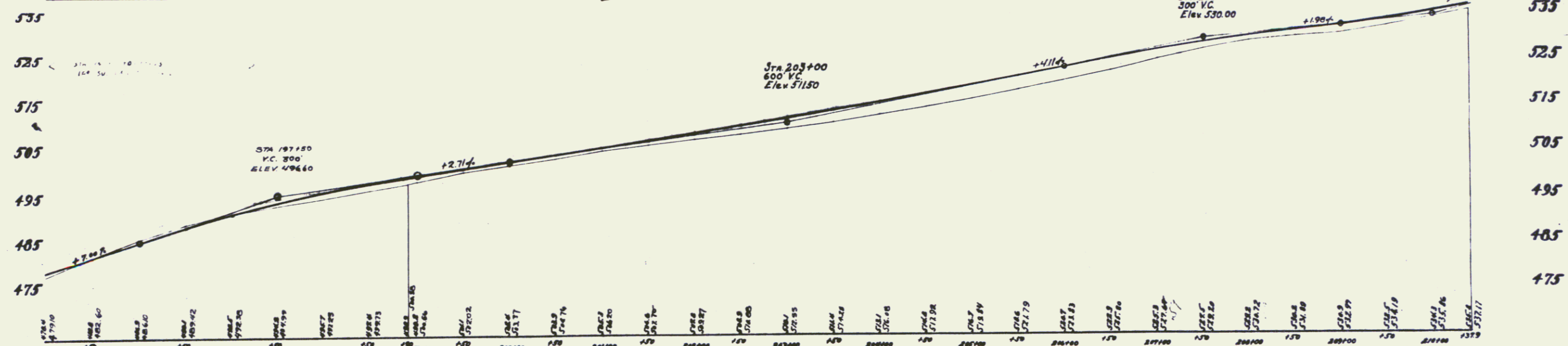
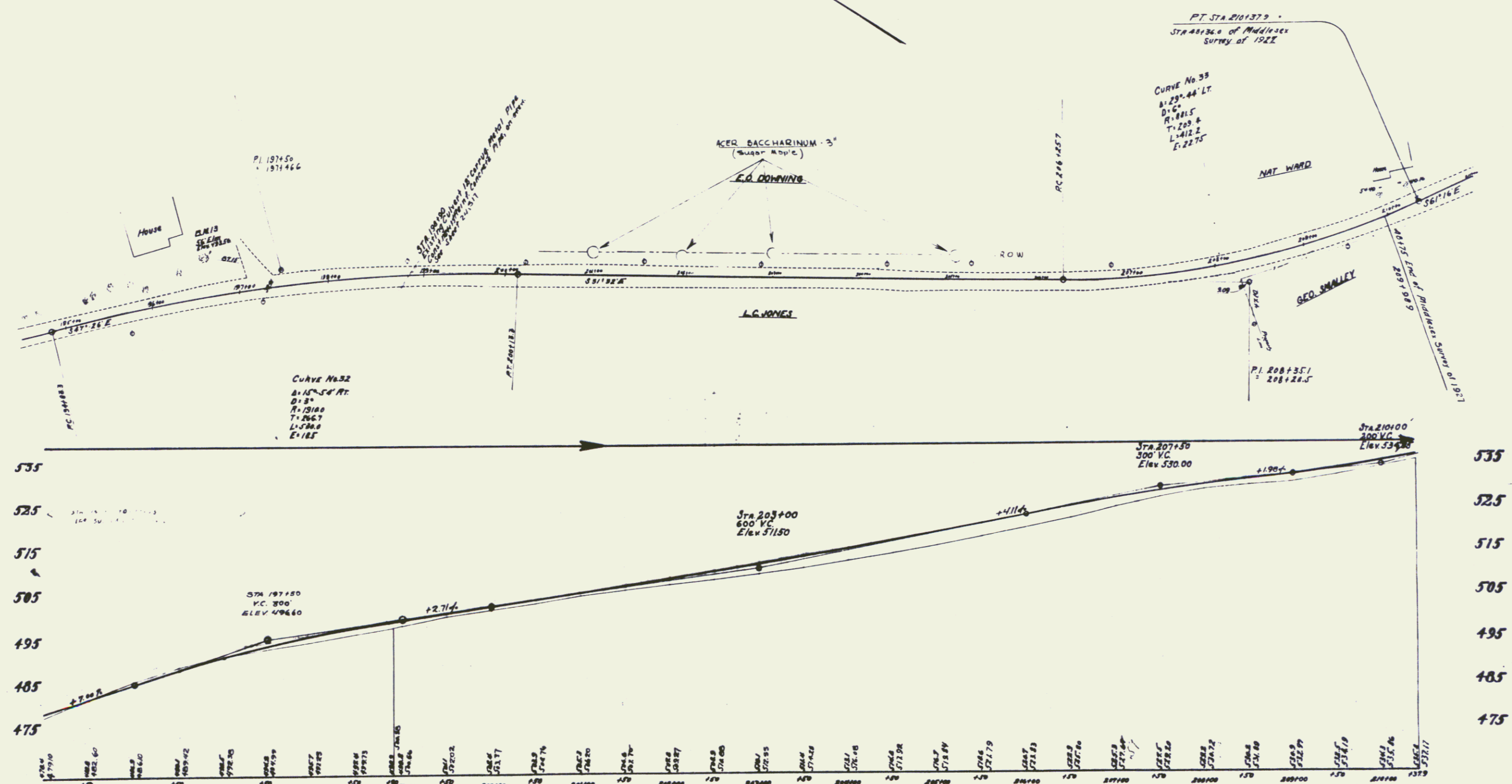
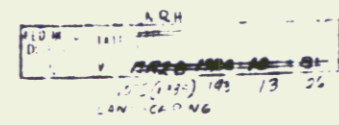


**CULVERTS REQUIRED**  
 STA. 199180 - 15" Rein. Conc. Pipe Length 44' 4"  
 Concrete Chest B (1-21-5) 44' x 4' 11"  
 Rein. Steel 27

**Yield Guard Rail**  
 80' LEET  
 STA. 199170 - 199180 Length 24'  
 1/2" x 2" x 1/4"  
 STA. 199176 - 199180 24'



DATA SPIKE IN ROAD OF 56" DIA. AT STA. 196+67. Elev. 493.56

SERIES NQA 107 C (1955)  
 LANDSCAPING  
 SHEET 20 OF 26

10