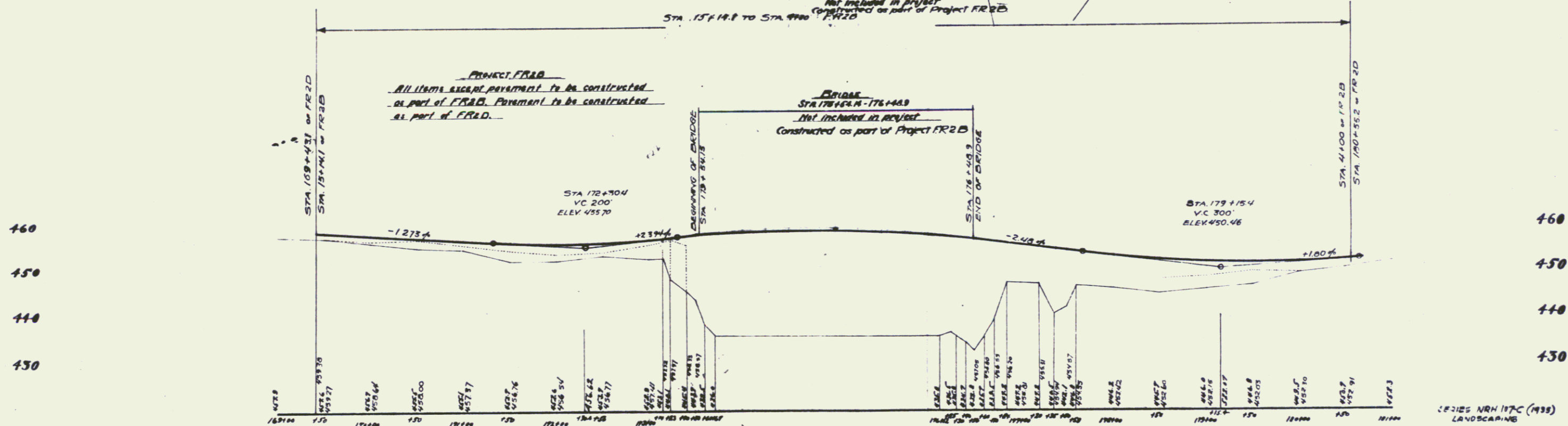
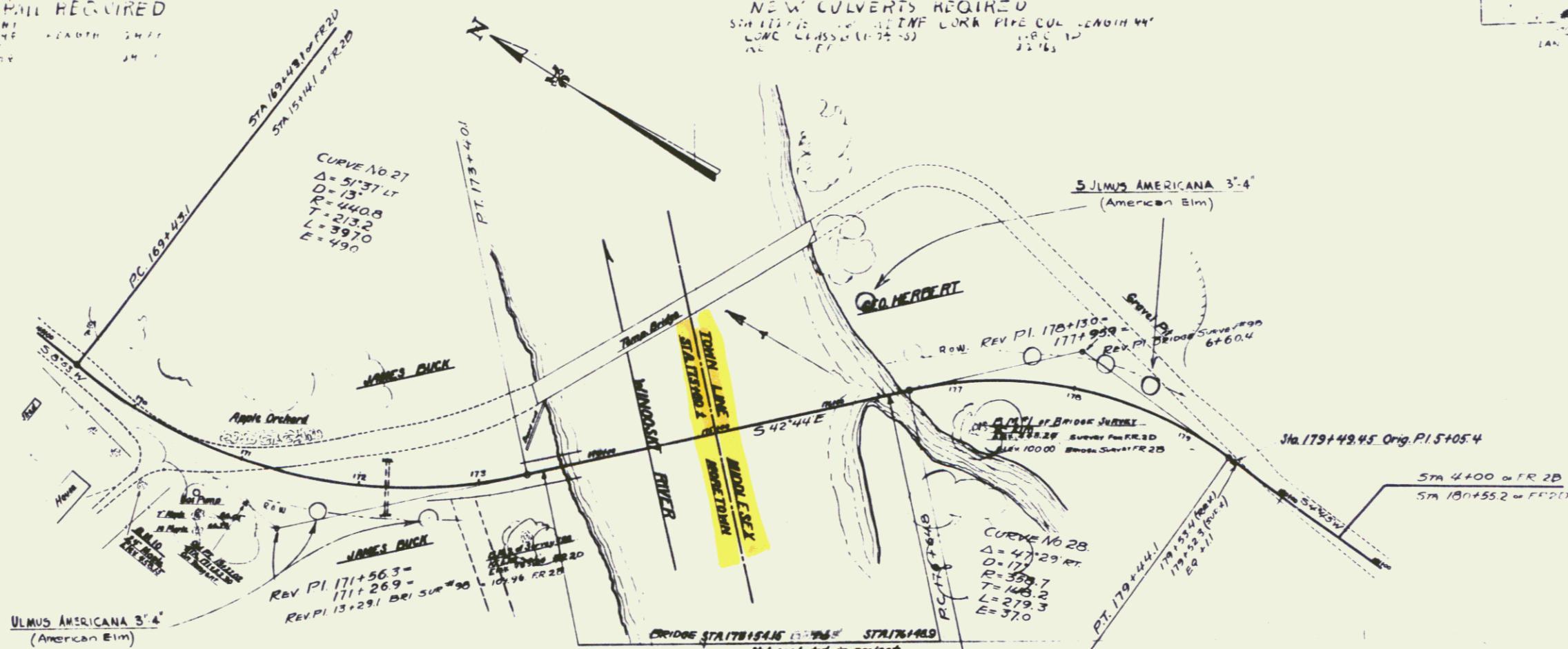
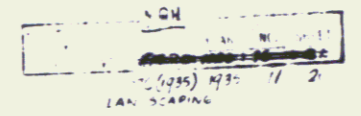


WOOD GRIND MILL REQUIRED
 OF RUMI
 1/4" = 10' HORIZ.
 1" = 10' VERT.

NEW CULVERTS REQUIRED
 STA 177+00 TO STA 177+50
 LOW CLASS (177+00)
 177+50



D.M. 10, split in road 24' North of Sta 176+48. Elev 458.15
 D.M. 1 of Bridge survey, 16' Elm at Sta 177+182. Elev 448.88
 D.M. 2 - 10' - 173+584 - 473.88 - 104.96

CRISIS NR 117C (433)
 LANDSCAPING
 SHEET NO. 25
 11