

INDEX OF SHEETS

SHEET NO.	TITLE PAGE
1	TITLE PAGE
2	TYPICAL CROSS-SECTION OF IMPROVEMENT (ONE COURSE CEMENT CONCRETE PAVEMENT, TYPE B)
3	PLAN AND PROFILE STA. 0+00-4+00
4	4+00-15+00
5	15+00-25+00
6	25+00-40+00
7	40+00-54+00
8	54+00-67+00
9	67+00-83+00
10	83+00-97+00
11	97+00-113+00
12	113+00-129+00
13	129+00-144+00
14	144+00-159+00
15	159+00-189+00
16	189+00-210+00
17	210+00-233+75
18	233+75-256+78.5
19	256+78.5-285+00
20	285+00-325+00
21	325+00-344+72.1
22	344+72.1-368+00
23	368+00-400+00
24	400+00-440+00
25	440+00-480+00
26	480+00-520+00
27	520+00-560+00
28	560+00-600+00
29	600+00-640+00
30	640+00-680+00
31	680+00-720+00
32	720+00-760+00
33	760+00-800+00
34	800+00-840+00
35	840+00-880+00
36	880+00-920+00
37	920+00-960+00
38	960+00-1000+00
39	1000+00-1040+00
40	1040+00-1080+00
41	1080+00-1120+00
42	1120+00-1160+00
43	1160+00-1200+00
44	1200+00-1240+00
45	1240+00-1280+00
46	1280+00-1320+00
47	1320+00-1360+00
48	1360+00-1400+00
49	1400+00-1440+00
50	1440+00-1480+00
51	1480+00-1520+00
52	1520+00-1560+00
53	1560+00-1600+00
54	1600+00-1640+00
55	1640+00-1680+00
56	1680+00-1720+00
57	1720+00-1760+00
58	1760+00-1800+00
59	1800+00-1840+00
60	1840+00-1880+00
61	1880+00-1920+00
62	1920+00-1960+00
63	1960+00-2000+00
64	2000+00-2040+00
65	2040+00-2080+00
66	2080+00-2120+00
67	2120+00-2160+00
68	2160+00-2200+00
69	2200+00-2240+00
70	2240+00-2280+00
71	2280+00-2320+00
72	2320+00-2360+00
73	2360+00-2400+00
74	2400+00-2440+00
75	2440+00-2480+00
76	2480+00-2520+00
77	2520+00-2560+00
78	2560+00-2600+00
79	2600+00-2640+00
80	2640+00-2680+00
81	2680+00-2720+00
82	2720+00-2760+00
83	2760+00-2800+00
84	2800+00-2840+00
85	2840+00-2880+00
86	2880+00-2920+00
87	2920+00-2960+00
88	2960+00-3000+00
89	3000+00-3040+00
90	3040+00-3080+00
91	3080+00-3120+00
92	3120+00-3160+00
93	3160+00-3200+00
94	3200+00-3240+00
95	3240+00-3280+00
96	3280+00-3320+00
97	3320+00-3360+00
98	3360+00-3400+00
99	3400+00-3440+00
100	3440+00-3480+00
101	3480+00-3520+00
102	3520+00-3560+00
103	3560+00-3600+00
104	3600+00-3640+00
105	3640+00-3680+00
106	3680+00-3720+00
107	3720+00-3760+00
108	3760+00-3800+00
109	3800+00-3840+00
110	3840+00-3880+00
111	3880+00-3920+00
112	3920+00-3960+00
113	3960+00-4000+00
114	4000+00-4040+00
115	4040+00-4080+00
116	4080+00-4120+00
117	4120+00-4160+00
118	4160+00-4200+00
119	4200+00-4240+00
120	4240+00-4280+00
121	4280+00-4320+00
122	4320+00-4360+00
123	4360+00-4400+00
124	4400+00-4440+00
125	4440+00-4480+00
126	4480+00-4520+00
127	4520+00-4560+00
128	4560+00-4600+00
129	4600+00-4640+00
130	4640+00-4680+00
131	4680+00-4720+00
132	4720+00-4760+00
133	4760+00-4800+00
134	4800+00-4840+00
135	4840+00-4880+00
136	4880+00-4920+00
137	4920+00-4960+00
138	4960+00-5000+00
139	5000+00-5040+00
140	5040+00-5080+00
141	5080+00-5120+00
142	5120+00-5160+00
143	5160+00-5200+00
144	5200+00-5240+00
145	5240+00-5280+00
146	5280+00-5320+00
147	5320+00-5360+00
148	5360+00-5400+00
149	5400+00-5440+00
150	5440+00-5480+00
151	5480+00-5520+00
152	5520+00-5560+00
153	5560+00-5600+00
154	5600+00-5640+00
155	5640+00-5680+00
156	5680+00-5720+00
157	5720+00-5760+00
158	5760+00-5800+00
159	5800+00-5840+00
160	5840+00-5880+00
161	5880+00-5920+00
162	5920+00-5960+00
163	5960+00-6000+00
164	6000+00-6040+00
165	6040+00-6080+00
166	6080+00-6120+00
167	6120+00-6160+00
168	6160+00-6200+00
169	6200+00-6240+00
170	6240+00-6280+00
171	6280+00-6320+00
172	6320+00-6360+00
173	6360+00-6400+00
174	6400+00-6440+00
175	6440+00-6480+00
176	6480+00-6520+00
177	6520+00-6560+00
178	6560+00-6600+00
179	6600+00-6640+00
180	6640+00-6680+00
181	6680+00-6720+00
182	6720+00-6760+00
183	6760+00-6800+00
184	6800+00-6840+00
185	6840+00-6880+00
186	6880+00-6920+00
187	6920+00-6960+00
188	6960+00-7000+00
189	7000+00-7040+00
190	7040+00-7080+00
191	7080+00-7120+00
192	7120+00-7160+00
193	7160+00-7200+00
194	7200+00-7240+00
195	7240+00-7280+00
196	7280+00-7320+00
197	7320+00-7360+00
198	7360+00-7400+00
199	7400+00-7440+00
200	7440+00-7480+00
201	7480+00-7520+00
202	7520+00-7560+00
203	7560+00-7600+00
204	7600+00-7640+00
205	7640+00-7680+00
206	7680+00-7720+00
207	7720+00-7760+00
208	7760+00-7800+00
209	7800+00-7840+00
210	7840+00-7880+00
211	7880+00-7920+00
212	7920+00-7960+00
213	7960+00-8000+00
214	8000+00-8040+00
215	8040+00-8080+00
216	8080+00-8120+00
217	8120+00-8160+00
218	8160+00-8200+00
219	8200+00-8240+00
220	8240+00-8280+00
221	8280+00-8320+00
222	8320+00-8360+00
223	8360+00-8400+00
224	8400+00-8440+00
225	8440+00-8480+00
226	8480+00-8520+00
227	8520+00-8560+00
228	8560+00-8600+00
229	8600+00-8640+00
230	8640+00-8680+00
231	8680+00-8720+00
232	8720+00-8760+00
233	8760+00-8800+00
234	8800+00-8840+00
235	8840+00-8880+00
236	8880+00-8920+00
237	8920+00-8960+00
238	8960+00-9000+00
239	9000+00-9040+00
240	9040+00-9080+00
241	9080+00-9120+00
242	9120+00-9160+00
243	9160+00-9200+00
244	9200+00-9240+00
245	9240+00-9280+00
246	9280+00-9320+00
247	9320+00-9360+00
248	9360+00-9400+00
249	9400+00-9440+00
250	9440+00-9480+00
251	9480+00-9520+00
252	9520+00-9560+00
253	9560+00-9600+00
254	9600+00-9640+00
255	9640+00-9680+00
256	9680+00-9720+00
257	9720+00-9760+00
258	9760+00-9800+00
259	9800+00-9840+00
260	9840+00-9880+00
261	9880+00-9920+00
262	9920+00-9960+00
263	9960+00-10000+00

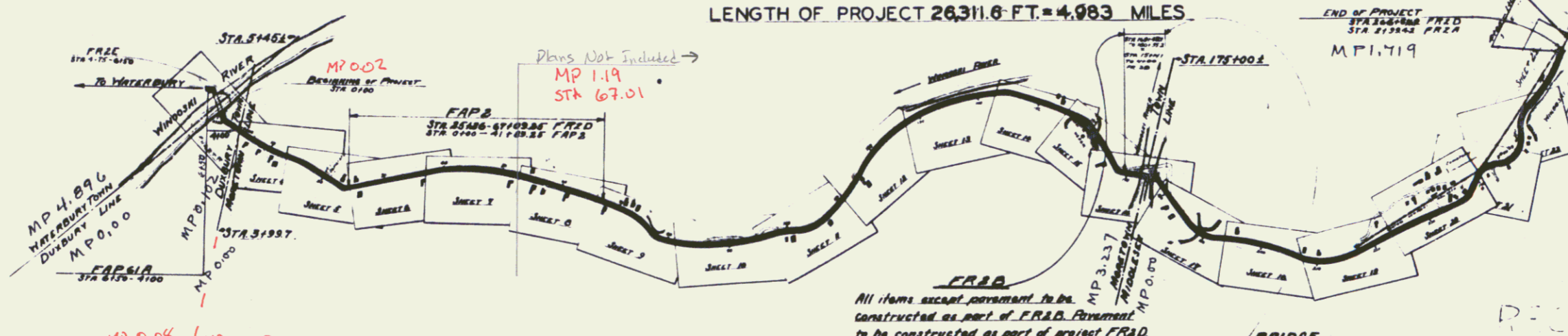
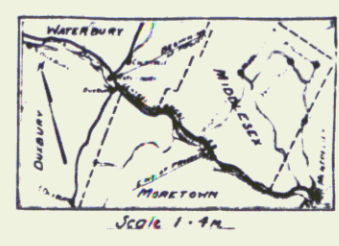
24-2536 Standard Structure Sheets S17-S19 S19
27-51 Cross Sections

STATE OF VERMONT
STATE HIGHWAY DEPARTMENT

PLAN AND PROFILE OF PROPOSED
STATE HIGHWAY **Plan # 991094**
FEDERAL AID PROJECT

TOWNS OF DUXBURY • MORETOWN • MIDDLESEX
WATERBURY • MONTPELIER ROAD
BEGINNING AT THE WINOOSKI RIVER STEEL BRIDGE AND EXTENDING TO
A POINT 2700 FT. EASTERLY FROM THE MIDDLESEX RAILROAD STATION.
LENGTH OF PROJECT 26.3116 FT. = 4.983 MILES

REV.	DATE	BY	DESCRIPTION
1	7/2/28	W. B. Burt	AS SHOWN



CONVENTIONAL SIGNS

COUNTY LINE	---
TOWN LINE	---
FENCE WALL	---
STONE WALL	---
UNFENCED PROPERTY	---
GUARD RAIL	---
TRAVELED WAY	---
RAILROAD	---
RETAINING WALL	---
CENTER LINE	---
SURVEY LINE	---
CULVERT	---
DROP INLET	---
TROLLEY POLE	---
POWER POLE	---
TELEPHONE POLE	---
TRUSS	---
WEDGE	---

CURVE DATA	
DEFLECTION ANGLE	Δ
DEGREE OF CURVE	D
RADIUS OF CURVE	R
TANGENT DISTANCE	T
LENGTH OF CURVE	L
EXTERNAL DISTANCE	E
POINT OF INTERSECTION	P. I.
POINT OF CURVE	P. C.
POINT OF TANGENT	P. T.
POINT ON TANGENT	P. O. T.

FRRA
All items except pavement to be constructed as part of FRRA. Pavement to be constructed as part of project FRAD.

BRIDGE
Sta 175+415 - STA 176+525
Not included in project FRAD. To be constructed as part of project FRBB.

LAYOUT SCALE
1 inch = 1000 ft.

SCALES
Plan: 50 ft. = 1 inch
Vertical: 10' = 1 inch
Cross Sections: 5 ft. = 1 inch

These plans subject to such revisions as may be required by the Bureau of Public Roads, or the Chief Engineer.

This project to be constructed in accordance with Standard Specifications on file with the U.S. Bureau of Public Roads as approved July 7, 1926.

FRRA
All items except pavement to be constructed as part of project FRRA. Pavement to be constructed to west end of bridge as part of project FRAD.

RIGHT-OF-WAY DIVISION
TOWN FILE
PERPETUAL

RECORD PLANS

July 2, 1928
W. B. Burt
July 2, 1928

RECOMMENDED
DISTRICT ENGINEER
BUREAU OF PUBLIC ROADS

RECOMMENDED FOR APPROVAL
CHIEF ENGINEER
BUREAU OF PUBLIC ROADS

APPROVED
DIRECTOR
BUREAU OF PUBLIC ROADS

Route: US 2
Project: SERIES P.R. NO. 20 FILED
SHEET (1) OF 21

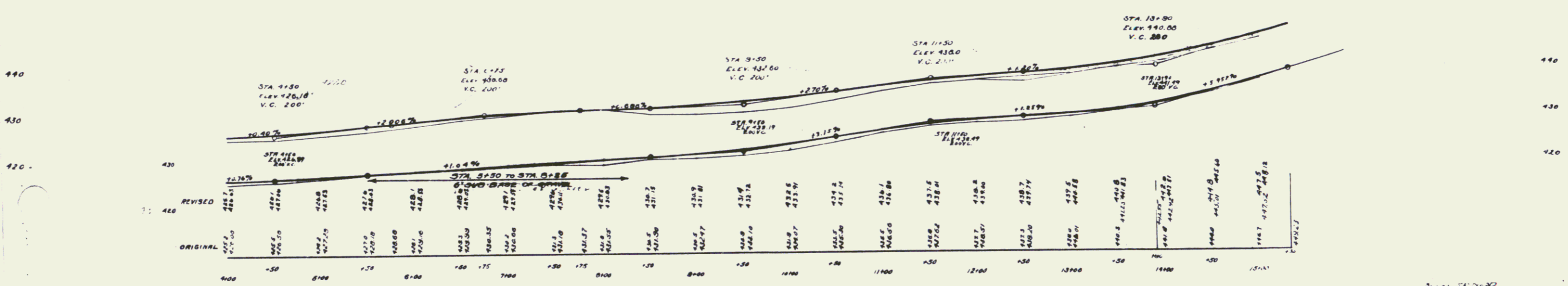
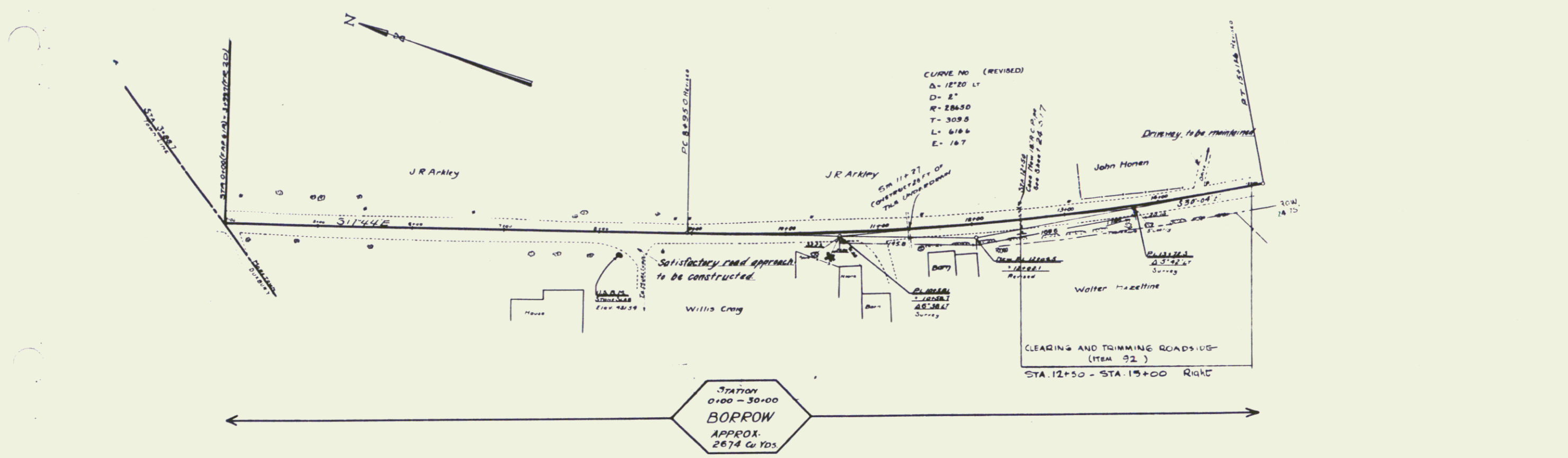
NEW CABLE GUARD RAIL REQUIRED
 STA 11+00 TO STA 11+15
 LENGTH 15 FEET

NEW WOOD GUARD RAIL REQUIRED
 STA 11+15 TO STA 11+27
 LENGTH 12 FEET

TILE UNDERDRAIN REQUIRED
 STA 11+27 LENGTH 20 FEET

NEW CULVERTS REQUIRED
 STA 12+00 TO STA 12+15
 LENGTH 15 FEET

4 91



U.S. R.T. 310 & 312A Point Mass on Curve: STA 10.21 Elev 431.34

4

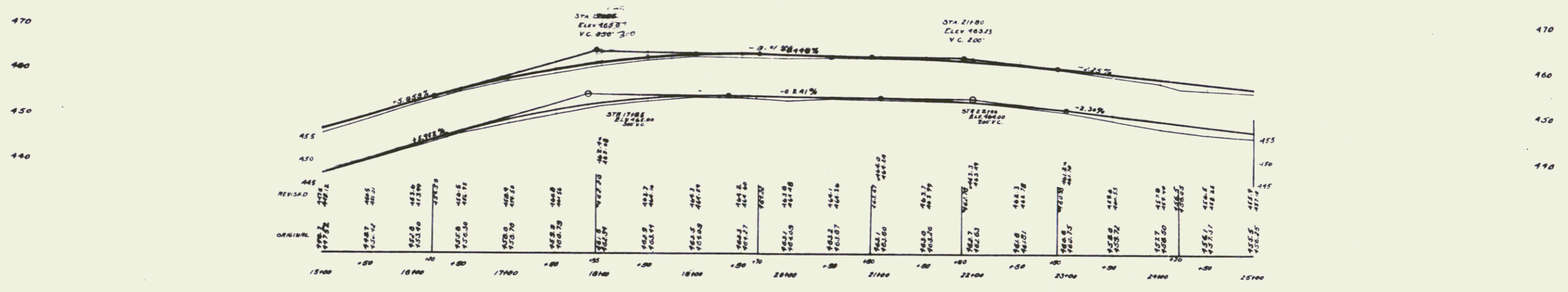
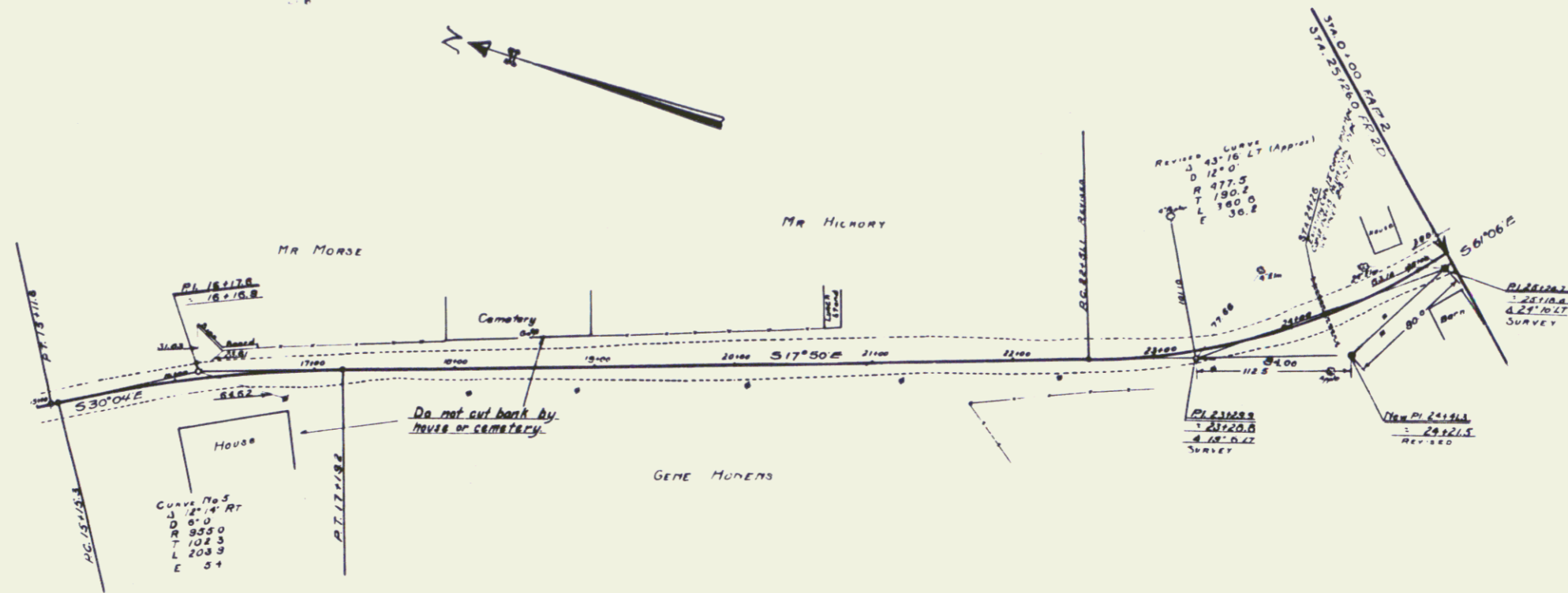
3

NEW CABLE GUARD RAIL REQUIRED
 - ON L&P -
 STA 15100 TO STA 15400 LENGTH 300 LF

NEW WOOD GUARD RAIL REQUIRED
 - ON R&P -
 STA 20000 TO STA 20500 LENGTH 500 LF

NEW CULVERTS REQUIRED
 STA 21100 15" Reinforced Concrete Pipe Length 165 FT
 Concrete Class B (U-29-3)
 Reinforcing Steel 3.00 Cu Yd

11-21-1928 S 47



11-21-1928 S 47

4

NEW CABLE GUARD RAIL REQUIRED

STA 29+00 TO STA 30+00 LENGTH 100 LF
 STA 30+00 TO STA 36+75 LENGTH 66 LF
 STA 36+75 TO STA 38+75 LENGTH 20 LF
 TOTAL FOR SHEET 186 LF

NEW WOOD GUARD RAIL REQUIRED

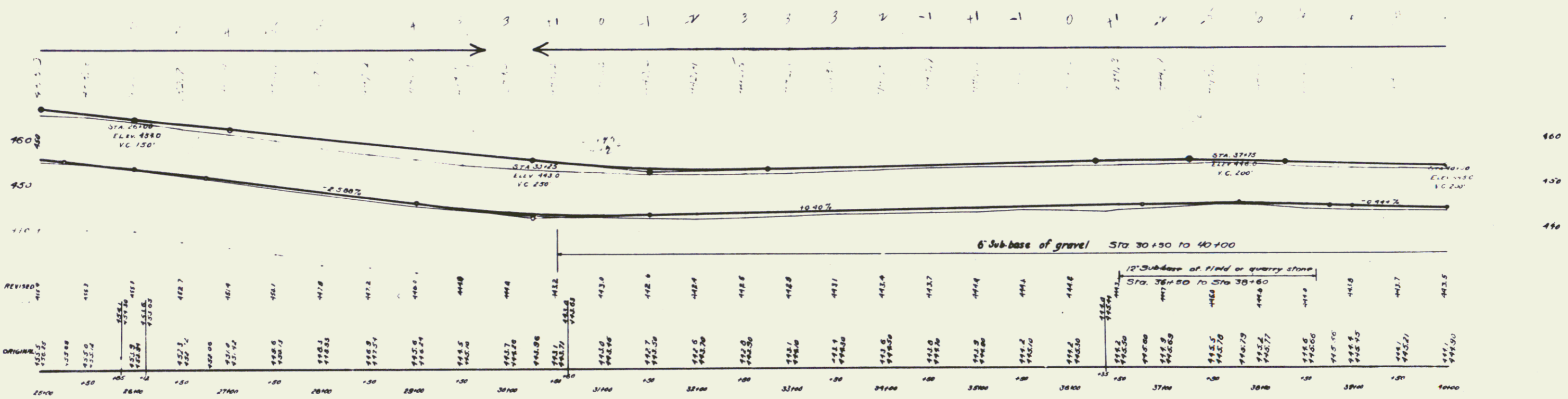
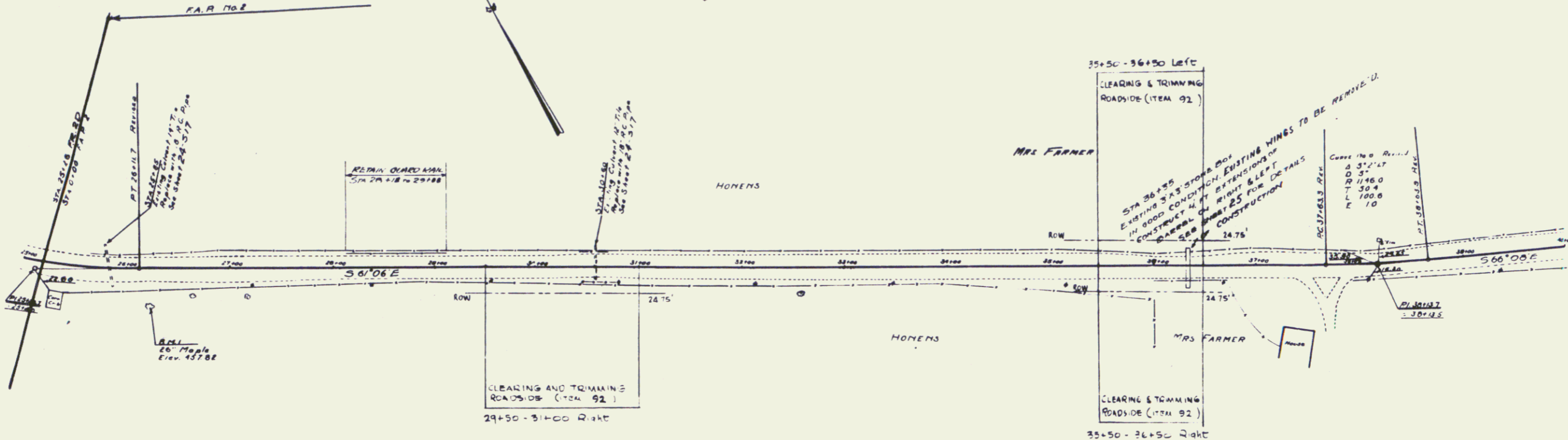
STA 27+00 TO STA 28+75 LENGTH 175 LF
 STA 28+75 TO STA 31+75 LENGTH 300 LF
 STA 31+75 TO STA 33+00 LENGTH 125 LF
 STA 33+00 TO STA 34+00 LENGTH 100 LF
 TOTAL FOR SHEET 600 LF

NEW CULVERTS REQUIRED

STA 25+85 6" Reinforced Concrete Pipe Length 100 FT
 Concrete Class A (12" R) Reinforcing Steel 34.100
 STA 30+60 6" Reinforced Concrete Pipe Length 100 FT
 Concrete Class A (12" R) Reinforcing Steel 34.100

CULVERT REPAIRS REQUIRED

STA 36+75 Present 36" Box in good condition
 Concrete Class A (12" R) Reinforcing Steel 426 lbs
 Rusting wires to be removed



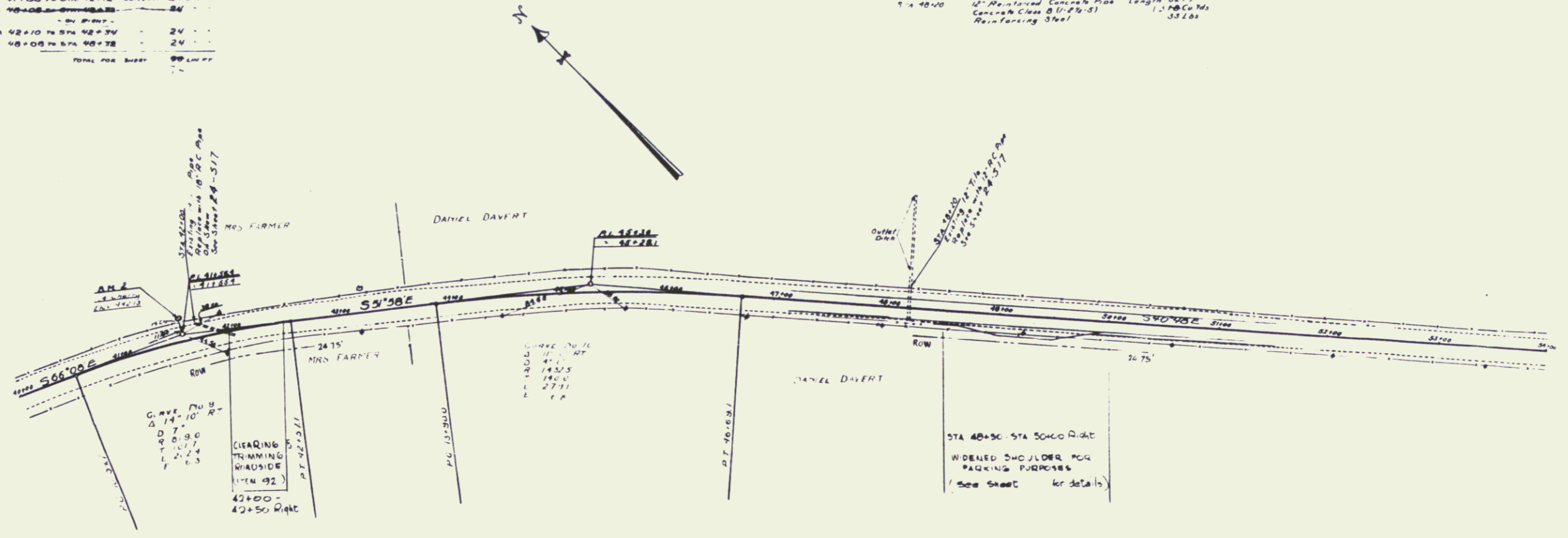
B.M. Spike in 2nd Map Ref. STA 29+00 Elev. 457.82

Sheet 186 of 20
 6-01

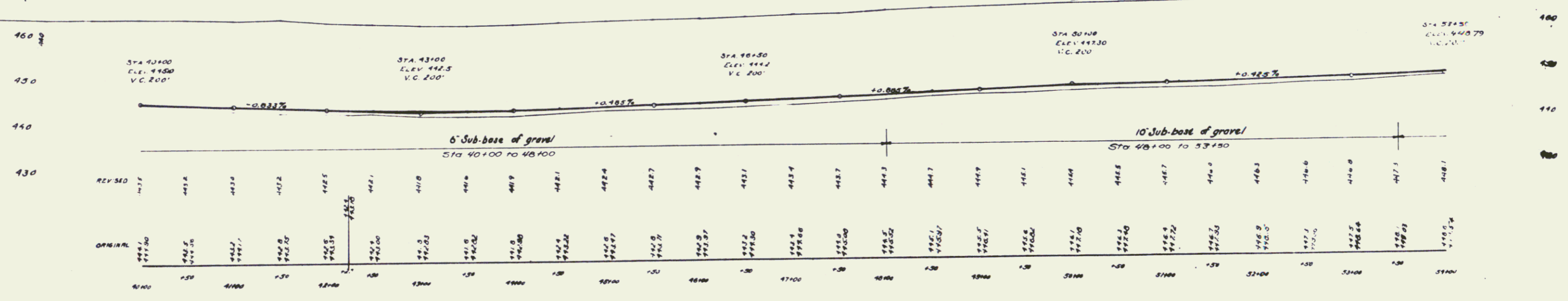
5

NEW WOOD GUARD RAIL REQUIRED
 - BLKPT -
 STA 41+00 TO STA 42+12 LENGTH 24 LIN FT
 STA 48+00 TO STA 48+38 38
 STA 42+10 TO STA 42+30 20
 STA 48+00 TO STA 48+38 38
 TOTAL FOR BLKPT 100 LIN FT

NEW CULVERTS REQUIRED
 STA 41+00 18" Reinforced Concrete Pipe Length 60 FT
 Concrete Class A (11/2") Reinforcing Steel 120 Cu Yds
 STA 48+00 18" Reinforced Concrete Pipe Length 38 FT
 Concrete Class B (11/2") Reinforcing Steel 38 Cu Yds



STATION
 30+00 - 75+00
BORROW
 APPROX -
 17.32 Cu Yds



B.M. 2 Spike in 14" Cherry 47+87.41 ELEV 442.18

Scale 1" = 20' HORIZ
 1" = 5' VERT

6

NEW CABLE GUARD RAIL REQUIRED

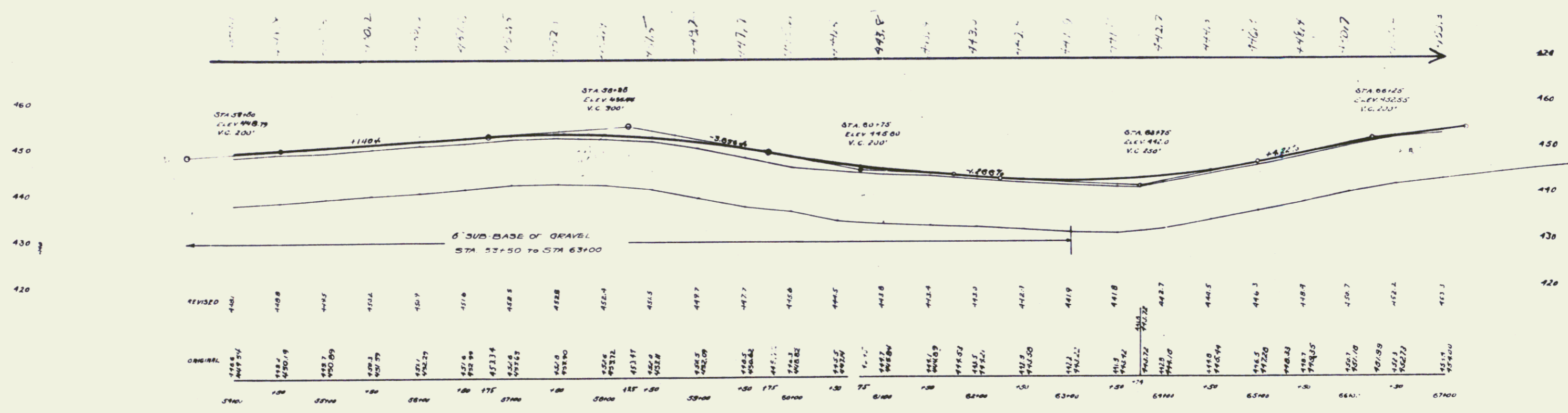
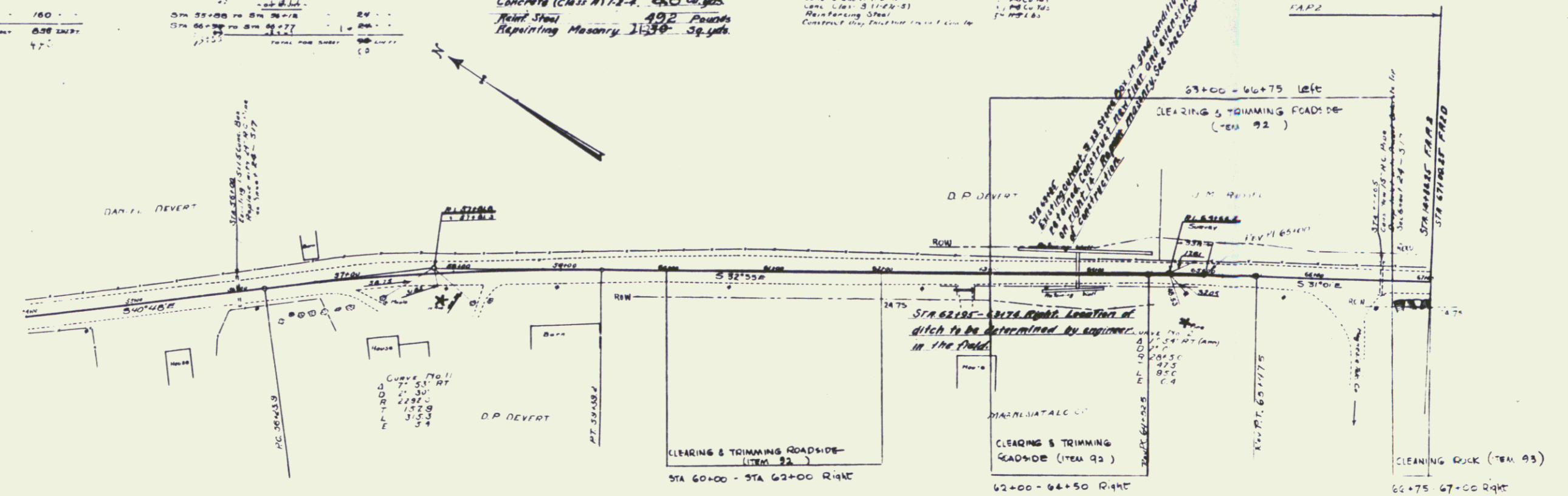
STATION	LENGTH	REMARKS
STA 58+00 TO STA 58+95	95	2.0'
STA 58+00 TO STA 59+00	100	1.60
TOTAL FOR BRIDGE	195	

NEW WOOD GUARD RAIL REQUIRED

STATION	LENGTH	REMARKS
STA 59+00 TO STA 59+18	18	24
STA 59+00 TO STA 59+77	77	24
STA 59+00 TO STA 59+77	77	24
TOTAL FOR BRIDGE	172	

CULVERT REPAIRS REQUIRED
 STA 62+00 - 3 18" Stone Box Culvert
 New flow and extension of barrel
 on right side
 Concrete (Class A) 1-2-4
 Rebar Steel
 Repairing Masonry 11-300 Sq. yds.

NEW CULVERTS REQUIRED
 STA 58+00
 18" Reinforced Concrete Pipe
 Concrete Class A (1-2-4)
 Rebar Steel
 STA 59+00
 18" Reinforced Concrete Pipe
 Concrete Class A (1-2-4)
 Rebar Steel
 STA 60+00
 18" Reinforced Concrete Pipe
 Concrete Class A (1-2-4)
 Rebar Steel



FIELD 1928 B 81