

WOOD GUARD RAIL REQUIRED

CULVERT STATION	LEFT	RIGHT
463+63	24'	
471+38	24'	
476+75	26'	24'

CABLE GUARD RAIL REQUIRED

STATION	LEFT	RIGHT
461+00-465+43	19'	
466+25-467+77	152'	
468+50-472+76	416'	

NEW REINF CONCRETE PIPE CULVERTS REQUIRED

STATION	DIAM	LENG	CONC-A	CONC-C	REINF STEEL
469+68	30"	40'	24 CY		54#
471+58	30"	36'	32 CY		58#
474+75	15"	36'		23 CY	33#

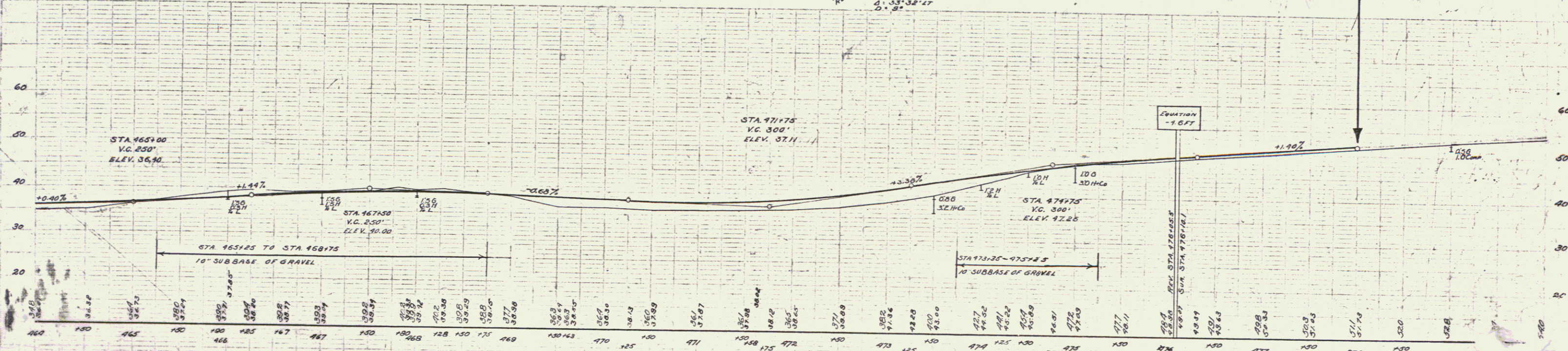
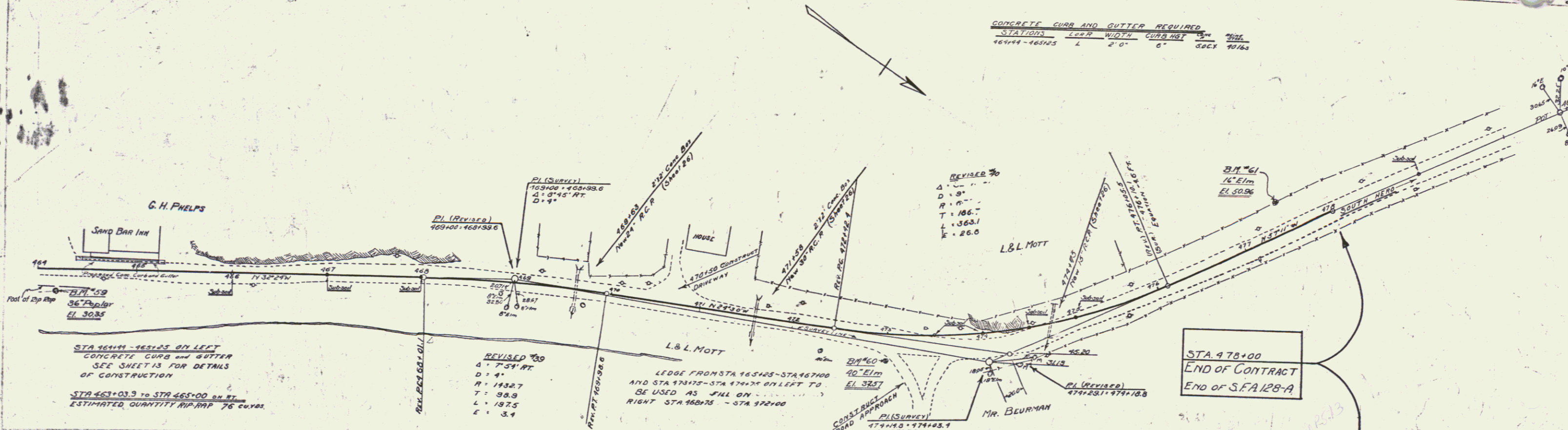
GROUTED COBBLE GUTTER REQUIRED

STATION	LENG	WIDTH	LEVS	AREA
464+50-464+99	49'	3'-0"	6"	236.7 sq. ft.
465+24-465+30	6'	3'-0"	6"	206.1 sq. ft.

CONCRETE CURB AND GUTTER REQUIRED

STATION	LENG	WIDTH	CURB HT	AREA
464+44-465+25	81'	2'-0"	6"	306.1 sq. ft.

FED. ROAD DIST. NO. STATE VT. S.F.A. 128-A



- B.M. No. 59 spike in root 36" poplar 11 STA 448+45 ELEV. 30.35
- B.M. No. 60 spike in root 40" Elm 22 1/2 STA 473+02 ELEV. 37.57
- rod 16" Elm 33 1/2 STA 477+47 ELEV. 50.96

7
SERIES SFA No 128-A
SHEET 63 OF 65