

INDEX OF SHEETS

SHEET NO. 1 TITLE PAGE

- 2 AND 3 ATYPICAL CROSS-SECTION OF IMPROVEMENT (ONE COURSE CEMENT CONCRETE PAVEMENT)
- 3 DETAILS OF CONSTRUCTION (CONCRETE PAVEMENT)
- 4-25 PLAN AND PROFILE SHEETS
- 26 STANDARD STRUCTURE SHEET-5-20-PIPE CULVERTS
- 27 STANDARD STRUCTURE SHEET-5-21-BOX CULVERTS
- 28 STANDARD STRUCTURE SHEET-5-22-GUARD RAIL, ETC.
- 28-A CONCRETE CRIBBING
- 29 STANDARD APPROACH SLAB WITH DROP INLET-S.B.-B
- 30 APPROACH SLAB FOR BRIDGE, STA. 437+78-STA. 438+20
- 31-65 CROSS SECTIONS

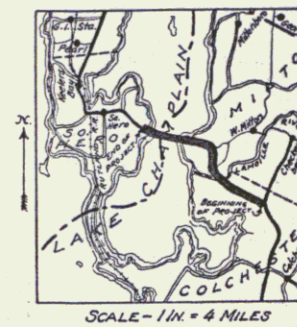
**STATE OF VERMONT
STATE HIGHWAY DEPARTMENT**

**PLAN AND PROFILE OF PROPOSED
STATE HIGHWAY**

FEDERAL AID PROJECT

TOWNS OF COLCHESTER-MILTON-SO. HERO
ISLAND ROAD
FROM "OLD CHIMNEY CORNER," WEST 6.751 MILES

| FED. ROAD DIST. NO. | STATE | PROJ. NO. | PLAN YEAR | SHEET NO. | TOTAL SHEETS |
|---------------------|-------|--|-----------|-----------|--------------|
| 9 | VT. | F.A.P. 106A-106B-106C-106D-106E-106F-106G-106H-106I-106J-106K-106L-106M-106N-106O-106P-106Q-106R-106S-106T-106U-106V-106W-106X-106Y-106Z | 1930 | 7 | 63 |

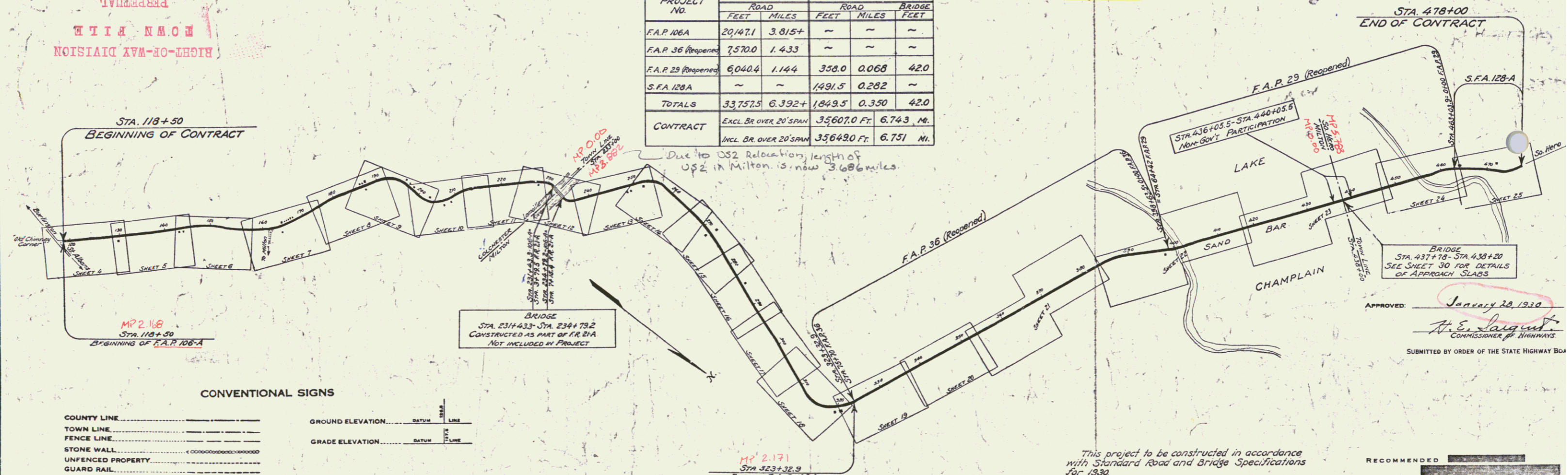


(To Be Returned to R.O.M. Division)
US 2
PERMANENT
RIGHT-OF-WAY DIVISION

RE. US 2
P.O. # 99R091

| PROJECT NO. | GOV'T PARTICIPATION | | NON-GOV'T PARTICIPATION | | BRIDGE FEET |
|----------------------|--------------------------------|---------------------|-------------------------|--------------|-------------|
| | ROAD FEET | MILES | ROAD FEET | MILES | |
| F.A.P. 106A | 20,147.1 | 3.815+ | ~ | ~ | ~ |
| F.A.P. 36 (Reopened) | 7,570.0 | 1.433 | ~ | ~ | ~ |
| F.A.P. 29 (Reopened) | 6,040.4 | 1.144 | 358.0 | 0.068 | 42.0 |
| S.F.A. 128A | ~ | ~ | 1491.5 | 0.282 | ~ |
| TOTALS | 33,757.5 | 6.392+ | 1,849.5 | 0.350 | 42.0 |
| CONTRACT | EXCL. BR. OVER 20' SPAN | 3,5607.0 FT. | 6.743 MI. | | |
| | INCL. BR. OVER 20' SPAN | 3,5649.0 FT. | 6.751 MI. | | |

Due to US2 Relocation, length of US2 in Milton is now 3.686 miles.



CONVENTIONAL SIGNS

| | |
|-------------------|------------------|
| COUNTY LINE | GROUND ELEVATION |
| TOWN LINE | GRADE ELEVATION |
| FENCE LINE | |
| STONE WALL | |
| UNFENCED PROPERTY | |
| GUARD RAIL | |
| TRAVELED WAY | |
| RAILROAD | |
| RETAINING WALL | |
| CENTER LINE | |
| SURVEY LINE | |
| CULVERT | |
| DROP INLET | |
| TROLLEY POLE | |
| POWER POLE | |
| TELEPHONE POLE | |
| TREES | |
| HEDGE | |

CURVE DATA

| | |
|-----------------------|----------|
| DEFLECTION ANGLE | Δ |
| DEGREE OF CURVE | D |
| RADIUS OF CURVE | R |
| TANGENT DISTANCE | T |
| LENGTH OF CURVE | L |
| EXTERNAL DISTANCE | E |
| POINT OF INTERSECTION | P. I. |
| POINT OF CURVE | P. C. |
| POINT OF TANGENT | P. T. |
| POINT ON TANGENT | P. O. T. |

~ SCALES ~
Layout - 1 in. = 1000 ft.
Plan - 1 in. = 50 ft.
Profile - Hor. - 1 in. = 50 ft.
Vert. - 1 in. = 10 ft.
Sections - 1 in. = 5 ft.

This project to be constructed in accordance with Standard Road and Bridge Specifications for 1930.

These plans are subject to such revisions as may be required by the Bureau of Public Roads or the Chief Engineer.

APPROVED: January 28, 1930
H. E. Sargent
COMMISSIONER OF HIGHWAYS

SUBMITTED BY ORDER OF THE STATE HIGHWAY BOARD

RECOMMENDED _____ DISTRICT ENGINEER BUREAU OF PUBLIC ROADS

RECOMMENDED FOR APPROVAL _____ CHIEF ENGINEER

APPROVED _____ DIRECTOR - BUREAU OF PUBLIC ROADS

Project No. F.A.P. 106A-106B-106C-106D-106E-106F-106G-106H-106I-106J-106K-106L-106M-106N-106O-106P-106Q-106R-106S-106T-106U-106V-106W-106X-106Y-106Z

PLANS COMPLETED JAN. 27, 1930

SERIES F. NO. 1 FILED

SHEET 7 OF 63

DIST. # 5 PLANS

WOOD SHARD RAIL REQUIRED
 CURVE STATION LEFT RIGHT
 121+50 24' 24'

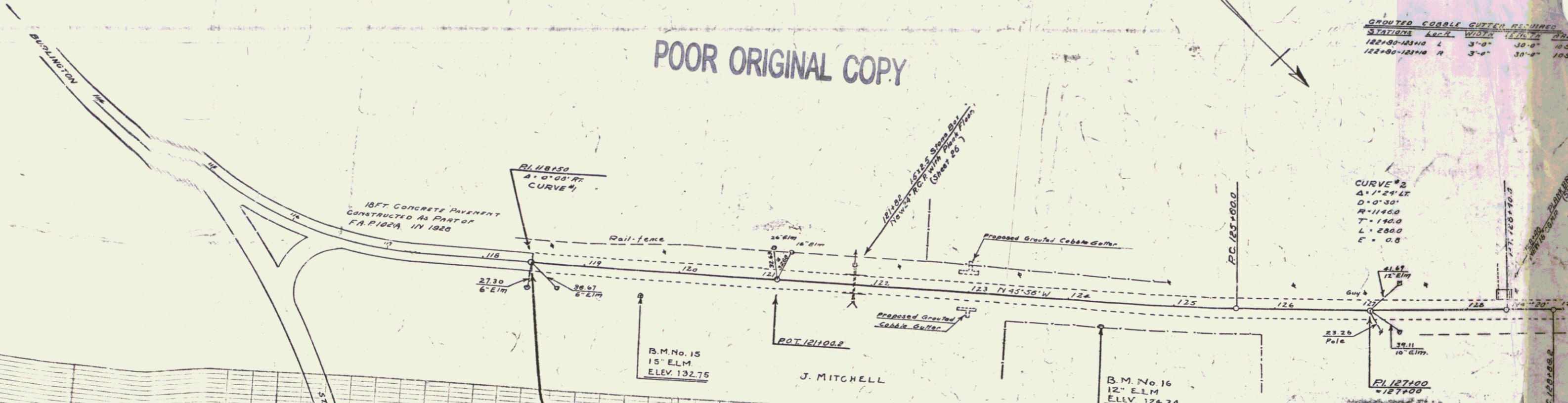
NEW REIN. CONCRETE PIPE CULVERTS REQUIRED
 STATION DIA. LENO CONC. CEMENT REINFORCED
 121+02 24' 40' 24" 34"

DRIVEWAY PIPE CULVERTS REQUIRED
 CON. ONLY METAL PIPE
 STATION DIA. LENO CONC. CEMENT REINFORCED
 123+00 4' 18" 20' 33" 33" 33"

| PER. ROAD DIST. NO. | STATE | PROJ. NO. | YEAR | SHEET NO. | TOTAL SHEETS |
|---------------------|-------|-----------|------|-----------|--------------|
| 3 | VT | 106-A | 1930 | 4 | 65 |

| STATION | LANE | WIDTH | AREA | AREA |
|---------------|------|-------|--------|---------|
| 122+80-123+10 | L | 3'-0" | 10'-0" | 30.00 |
| 122+80-123+10 | R | 3'-0" | 30'-0" | 1050.00 |

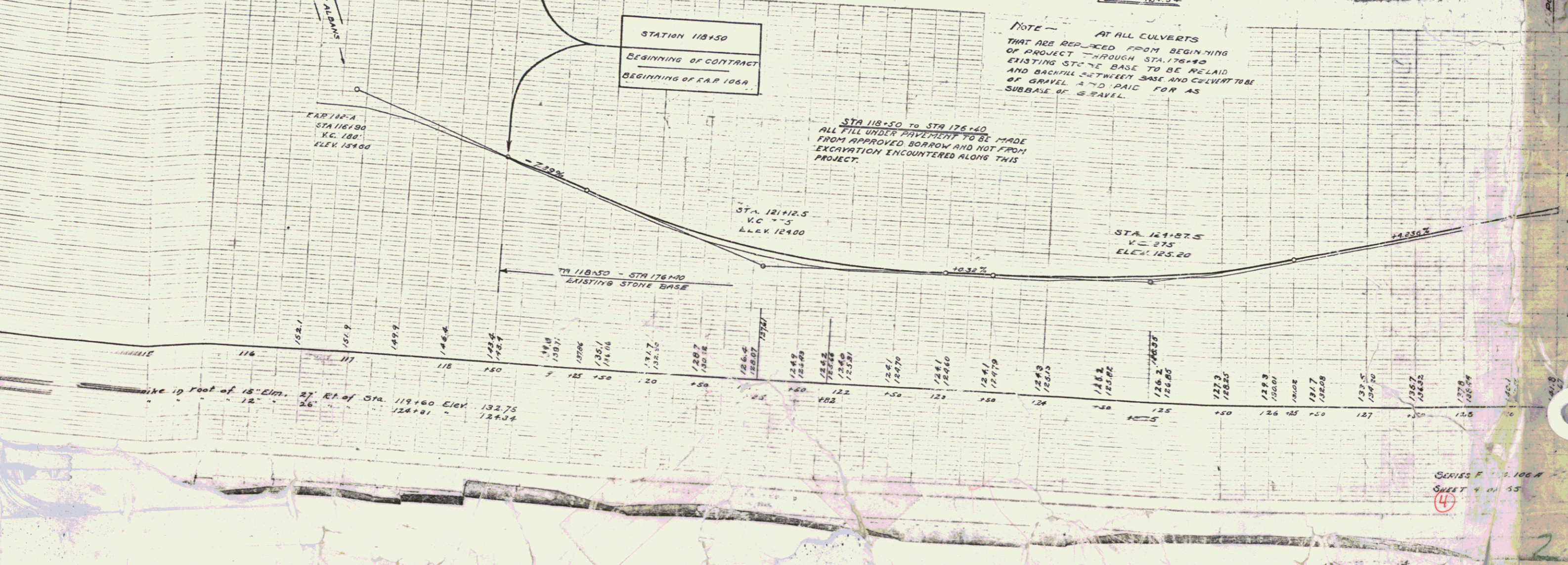
POOR ORIGINAL COPY



STATION 118+50
 BEGINNING OF CONTRACT
 BEGINNING OF F.A.R. 106A

NOTE - AT ALL CULVERTS THAT ARE REPLACED FROM BEGINNING OF PROJECT THROUGH STA. 176+40 EXISTING STONE BASE TO BE RELAID AND BACKFILL BETWEEN BASE AND CULVERTS TO BE GRAVEL 3\"/>

STA 118+50 TO STA 176+40 ALL FILL UNDER PAVEMENT TO BE MADE FROM APPROVED BORROW AND NOT FROM EXCAVATION ENCOUNTERED ALONG THIS PROJECT.



SERIES F 106-A
 SHEET 4 OF 55
 4

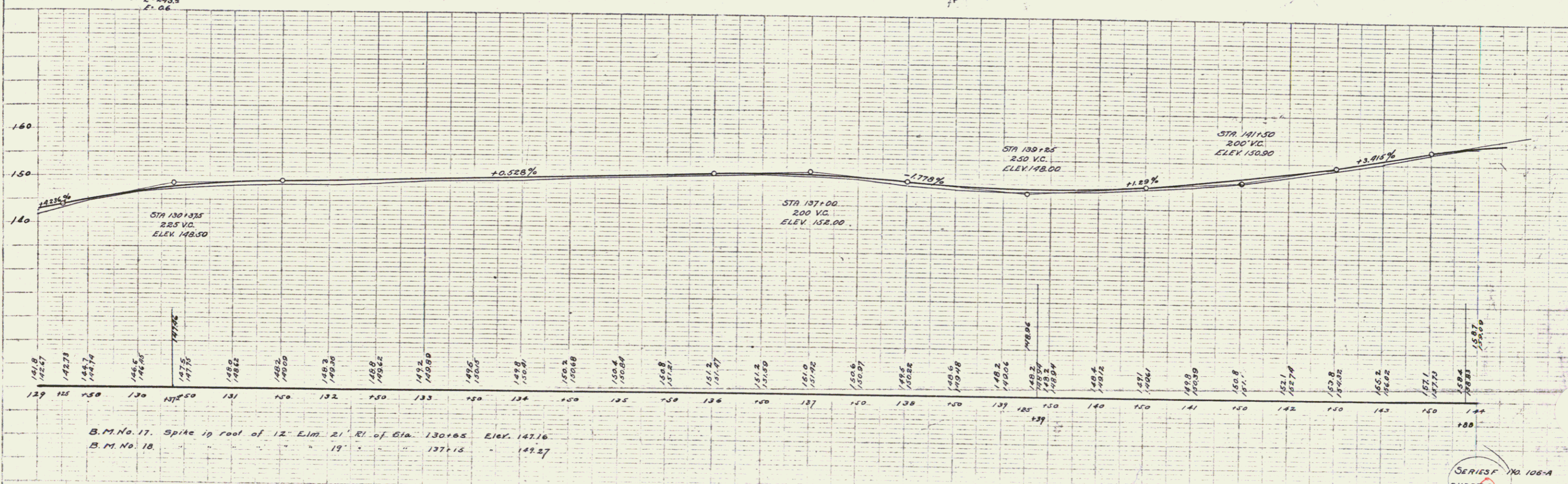
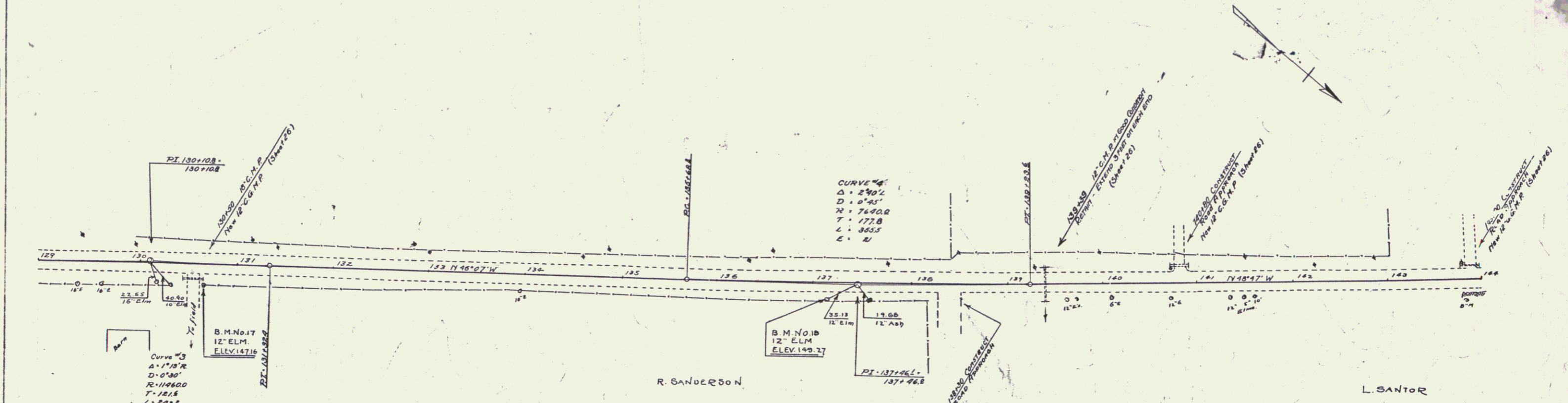
WOOD GUARDRAIL REQUIRED
 CULVERT STATION LEFT RIGHT
 130+30 24' 24'

CULVERT BEARINGS REQUIRED C&G
 DISTANCE DIAM. LENG. C&G C. RUFF STEEL
 139+30 12" 6' 30" 33"

DRIVEWAY PIPE CULVERTS REQUIRED
 CORR. GALV. METAL PIPE

| STATION | LEN. | DIAM. | LENG. | CEMENT RUBLE MASONRY |
|---------|------|-------|-------|----------------------|
| 130+80 | R | 12" | 20' | 23 CY |
| 140+80 | L | 12" | 20' | 23 CY |
| 143+30 | L | 12" | 20' | 23 CY |

| | | | |
|------|-------|-------------|-----------|
| DATE | STATE | PROJECT NO. | SHEET NO. |
| 9 | VT | 106-A | 65 |



B.M. No. 17. Spike in roof of 12' Elm 21' RI of Sta. 130+85 ELEV. 147.16
 B.M. No. 18. " " " " 19' " " 137+15 " 149.27

SERIES NO. 106-A
 SHEET 65 OF 65

WOOD GUARD RAIL REQUIRED

| CULVERT STATION | LEFT | RIGHT |
|-----------------|------|-------|
| 149+05 | 24' | 24' |
| 154+43 | 24' | 24' |

CULVERT REINFS REQUIRED C.E.M.P.

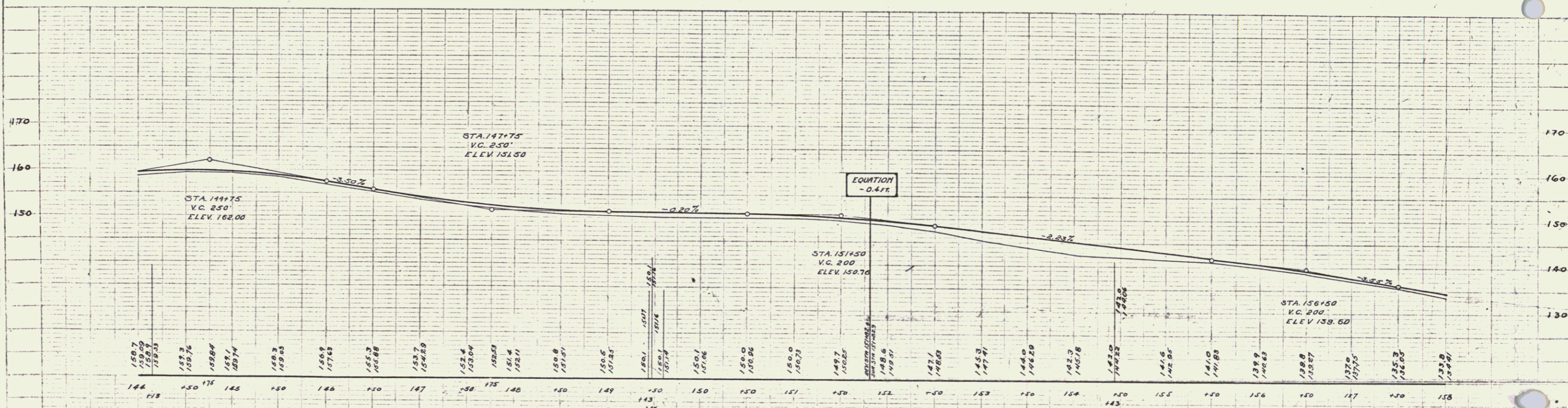
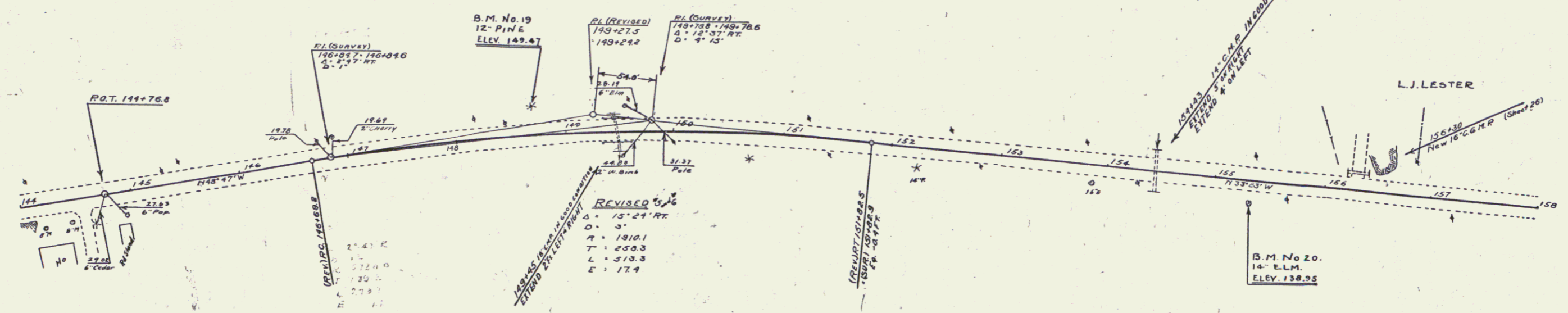
| STATION | DIAM | LENGTH | CONC | MINI STEEL |
|---------|------|--------|--------|------------|
| 149+05 | 18" | 47' | 3.0 cf | 33 LB. |
| 154+43 | 18" | 47' | 3.0 cf | 33 LB. |

DRIVEWAY PIPE CULVERTS REQUIRED

| STATION | LENGTH | DIAM | TYPE |
|---------|--------|------|----------------------|
| 156+30 | 10' | 18" | CEMENT RUBLE MASONRY |
| 156+30 | 10' | 20" | 27 CY. |

FED. ROAD DIST. NO. STATE PROJ. NO. FISCAL YEAR SHEET NO. TOTAL SHEETS

9 VT 106-A 1930 6 65



B.M. No. 19, Root, Brookside, 12' Pine, 26 ft. Lt. of Sta. 148+73 Elev. 149.47
 B.M. No. 20, Spike in roof of 14' Elm, 21 ft. Rht. of Sta. 155+33 Elev. 138.95

SERIES F NO. 106-A
 SHEET 6 OF 65

WOOD GUARD RAIL REQUIRED

| CULVERT STATION | LEFT | RIGHT |
|-----------------|------|-------|
| 163+05 | 24' | 24' |
| 172+34 | 24' | 24' |

NEW REINFORCED CONCRETE PIPE CULVERTS REQUIRED

| STATION | DIAM | LENG | CONC-A | CONC-C | REINFC STEEL |
|---------|------|------|--------|--------|--------------|
| 163+05 | 30" | 40' | 38CY | | 58' |

CULVERT REPAIRS REQUIRED G.G.M.S.

| STATION | DIAM | LENG | CONC-C | REINFC STEEL |
|---------|------|------|--------|--------------|
| 172+34 | 42" | 0' | 30CY | 33' |

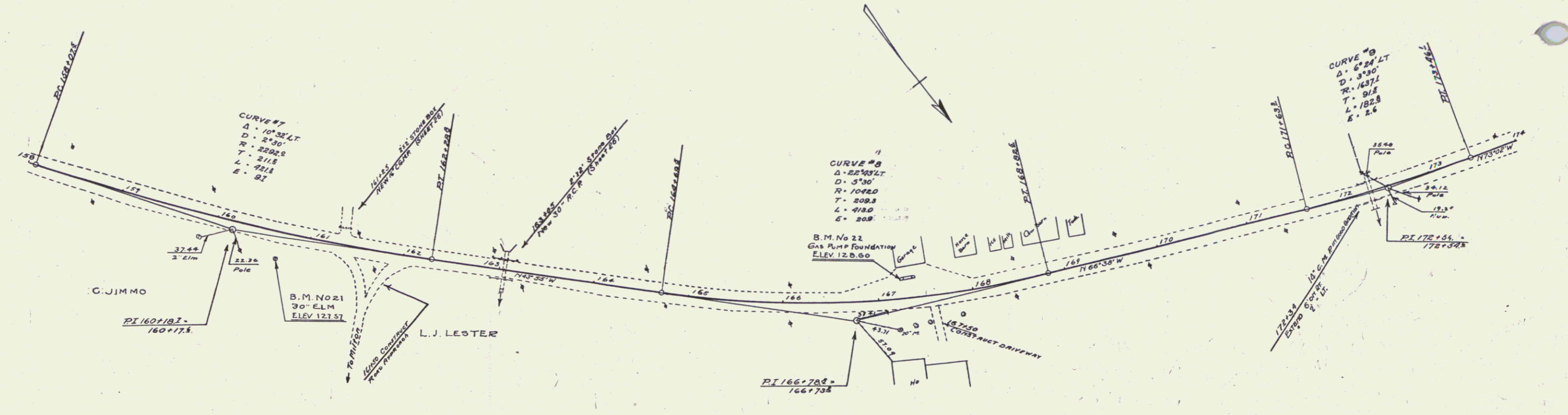
DRIVEWAY PIDS CULVERTS REQUIRED

| STATION | DIAM | LENG | CONC | PURPOSE |
|---------|------|------|-------|---------|
| 161+55 | 16" | 20' | 2.7CY | |

| FED. ROAD DIST. NO. | STATE | FED. AID PROJ. NO. | FISCAL YEAR | SHEET NO. | TOTAL SHEETS |
|---------------------|-------|--------------------|-------------|-----------|--------------|
| 9 | VT. | 106A | 1930 | 7 | 63 |

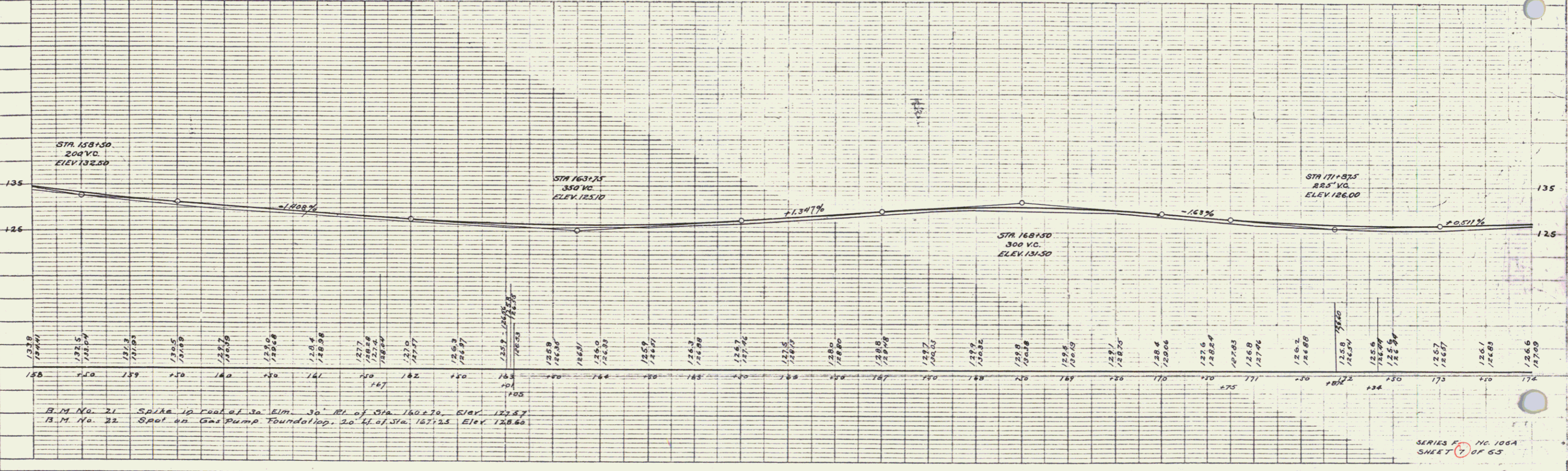
PLAN

DESIGNED BY: _____
 DRAWN BY: _____
 CHECKED BY: _____
 DATE: _____



PROFILE

DESIGNED BY: _____
 DRAWN BY: _____
 CHECKED BY: _____
 DATE: _____



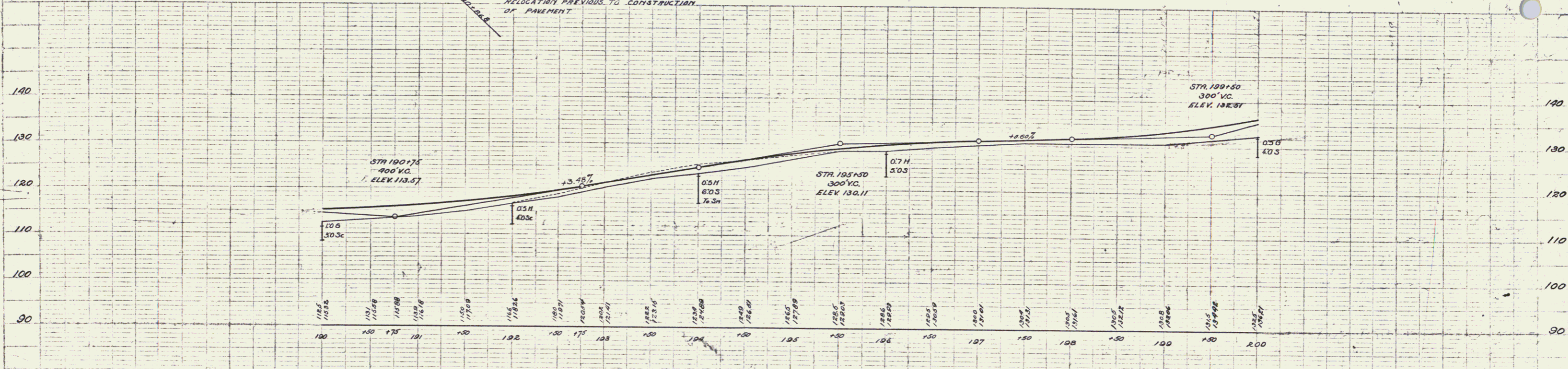
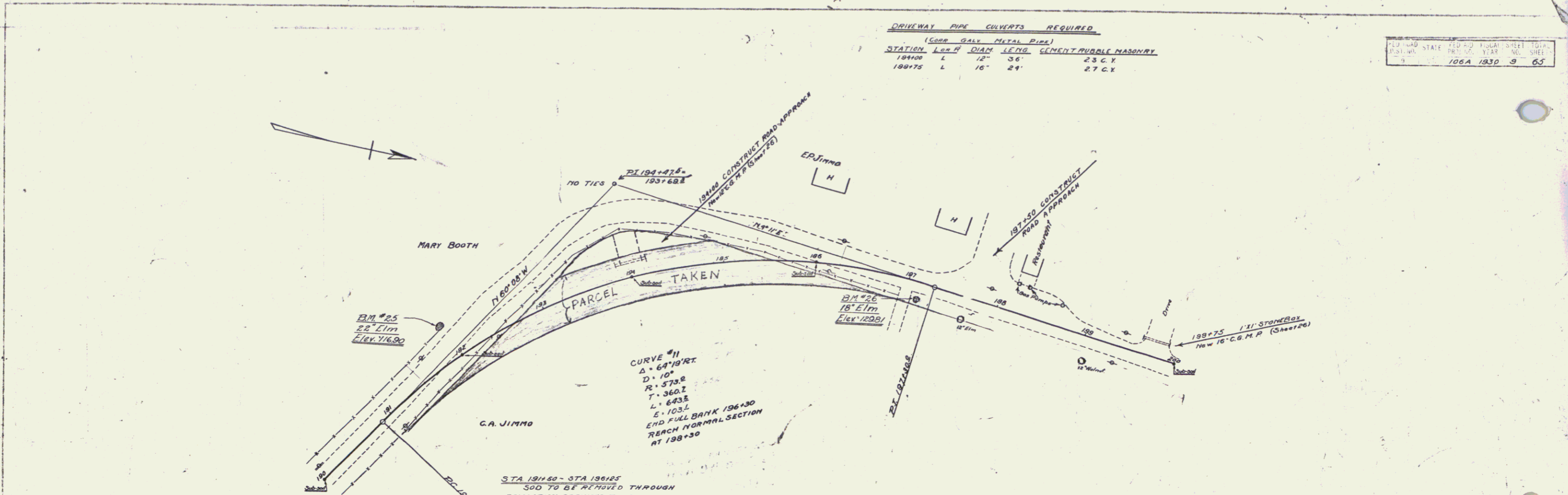
B.M. No. 21 Spike 10 feet of 30' ELM 30' RL of Sta 160+70. ELEV 122.57
 B.M. No. 22 Spot on Gas Pump Foundation, 20' Lt. of Sta. 167+25. ELEV 128.60

6

DRIVEWAY PIPE CULVERTS REQUIRED

| STATION | LEN | DIAM | LENG | GENERT | MURBLE MASONRY |
|---------|-----|------|------|--------|----------------|
| 184+08 | L | 18" | 36' | 2.3 CY | |
| 188+75 | L | 16" | 24' | 2.7 CY | |

| NO. | DATE | BY | REVISION |
|-----|------|------|----------|
| 1 | 106A | 1930 | 9 63 |



B.M. No. 25 SPIKE IN ROOT ELM. 37' LT STA 192+0 ELEV. 116.90
B.M. No. 26 SPIKE IN ROOT 18" ELM 17' RT STA 197+8 ELEV. 129.81

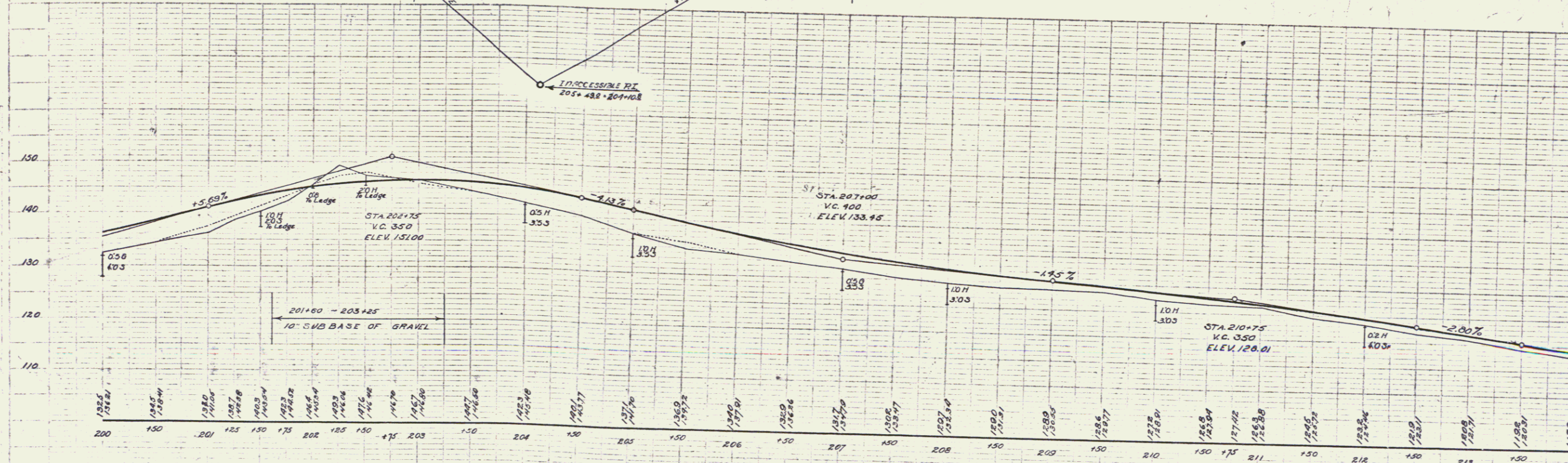
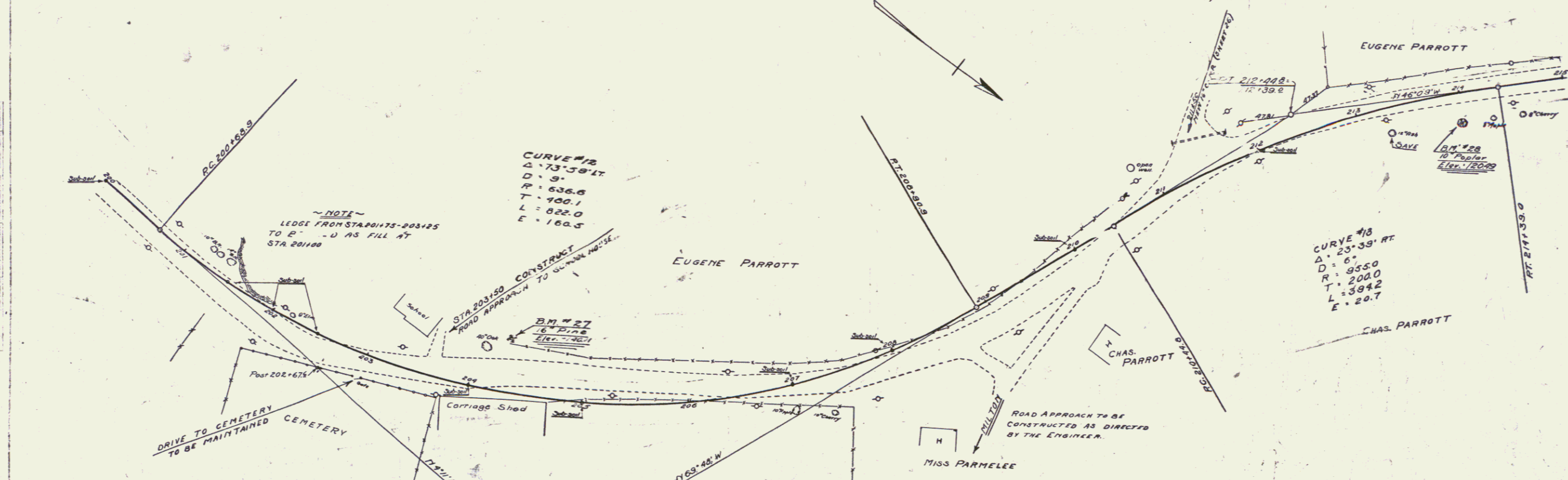
3 Plans

8

CABLE GUARD RAIL REQUIRED
 STATIONS LEFT RIGHT
 200+00-201+36 136'

DRIVEWAY SIDE CULVERTS REQUIRED
 16" DIA. CONC. PIPE
 16' 50" 2.7' C.V.

NO. 106A 1830 70 65



B.M. No 27 - spike in root 15" pine 45' left 510 204+31 ELEV. 140.11
B.M. No 28 - spike in root 10" poplar 26' Rt 510 214+00 ELEV. 120.19

SERIES F 110.106A SHEET 10 OF 65

9

CABLE GUARD RAIL REQUIRED

| STATION | LEFT | RIGHT |
|-----------------|------|-------|
| 214+00 - 218+36 | 266' | |
| 219+00 - 218+70 | | 330' |
| 223+80 - 225+00 | 112' | 112' |

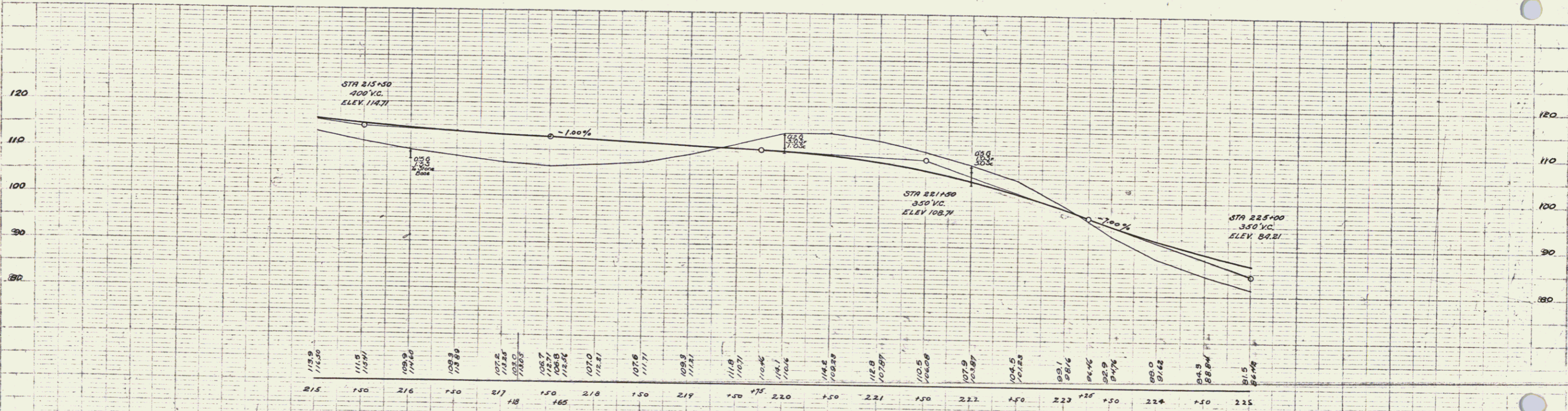
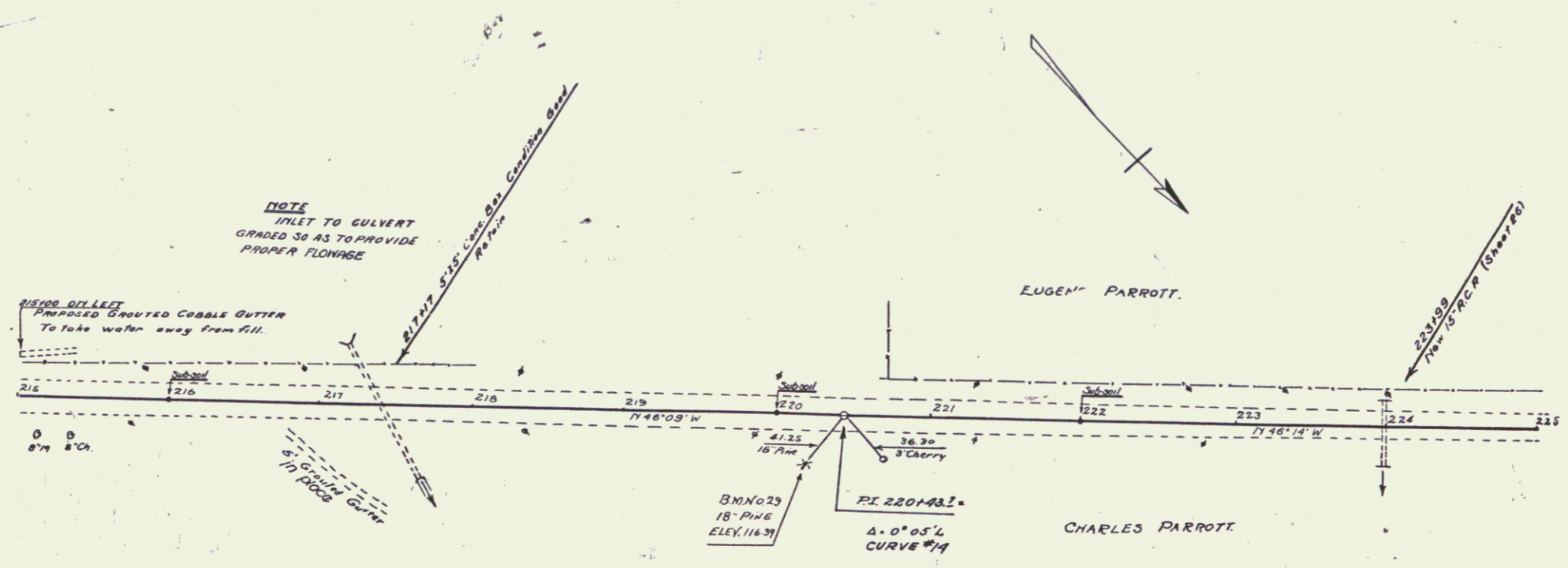
NEW REIN. CONCRETE PIPE CULVERTS REQUIRED

| STATION | DIAM | LENG | CONC'R | CONC'Q | REIN. STEEL |
|---------|------|------|--------|--------|-------------|
| 223+99 | 15" | 44' | 2.3 CK | | 33# |

GRADED COBBLE GUTTER REQUIRED

| STATION | LENG | WIDTH | LENG | AREA |
|---------|------|----------|----------|----------------------|
| 213+00 | 2' | Variable | Variable | 50 Sq. Yds. (approx) |

DATE: 10/10/50
 DRAWN BY: [unclear]
 CHECKED BY: [unclear]
 106A 1930 11 65



B.M. No. 29 Spike 19 14" Pine 23' Rt. of Sta. 220+10 Elev. 116.31

SERIES F 710 106A
 SHEET 11 OF 65

WOOD GUARDRAIL REQUIRED

| CULVERT STATION | LEFT | RIGHT |
|-----------------|------|-------|
| 230+03 | 84' | |
| 231+43 Bridge | 24' | |
| 234+79 Bridge | 20' | |

CABLE GUARDRAIL REQUIRED

| STATIONS | LEFT | RIGHT |
|-----------------|------|-------|
| 225+00 - 225+60 | 64' | 60' |
| 229+43 - 231+43 | 200' | |
| 234+79 - 235+99 | 120' | |

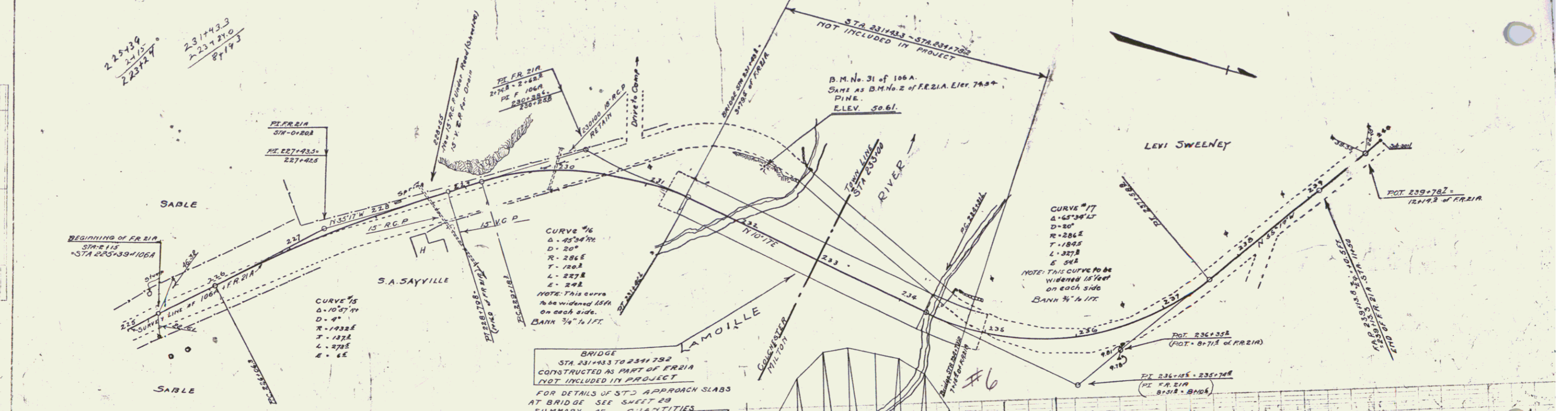
NEW REINFORCED CONCRETE PIPE CULVERTS REQUIRED

| STATION | DIAM. | LENG. | CONG. A | CONG. C | REIN. STEEL #1 | PRECAST |
|---------|-------|-------|---------|---------|----------------|---------|
| 228+18 | 15" | 40' | 1.5CY | 12CK | 77# | |

VITRIFIED CLAY PIPE REQUIRED

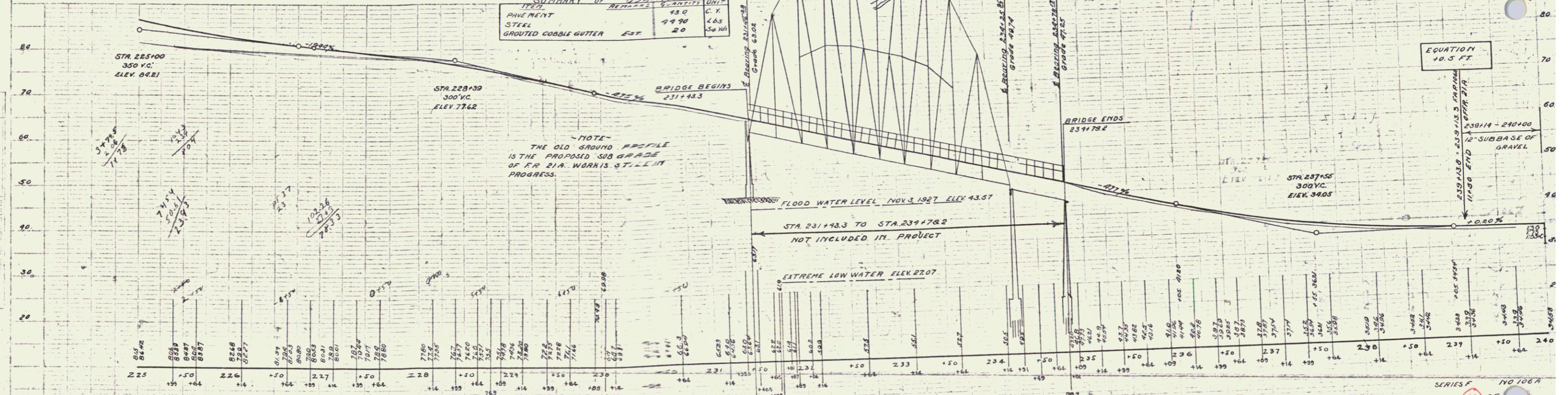
| STATION | DIAM. | LENG. | CONG. C | REIN. STEEL |
|---------|-------|-------|---------|-------------|
| 231+55 | 15" | 60' | 1.2CY | 17# |

STATE OF CALIFORNIA
 COUNTY OF LOS ANGELES
 PROJECT NO. 106A 1930 12 65



SUMMARY OF QUANTITIES

| ITEM | QUANTITY | UNIT |
|----------|----------|---------|
| PAVEMENT | 43.0 | SQ. YD. |
| STEEL | 99.90 | LBS. |
| GRAVEL | 20 | CY |



B.M. No. 31 of 106A. Elev. 50.61 of Pipe.
 Same as B.M. No. 2 of F.R. 21A. Elev. 74.54

SERIES F
 SHEET 12 OF 106A

WOOD GUARD RAIL REQUIRED

| CULVERT STATION | LEFT WIDTH | RIGHT WIDTH |
|-----------------|------------|-------------|
| 252+16 | 24' | 24' |
| 255+05 | 24' | 24' |

CABLE GUARD RAIL REQUIRED

| STATION | LEFT WIDTH | RIGHT WIDTH |
|-----------------|------------|-------------|
| 252+00 - 253+52 | 14' | 14' |

NEW REINF CONCRETE PIPE CULVERTS REQUIRED

| STATION | DIAM | LENG | CONC-A | CONC-C | STEEL DL | REINFORC TOP |
|---------|------|------|--------|--------|----------|--------------|
| 252+16 | 24" | 40' | 2.3 CY | 1.0 CY | 1.0 CY | 1 |
| 255+05 | 18" | 32' | 1.0 CY | 1.3 CY | 3.31" | 2 |

DRIVEWAY PIPE CULVERTS REQUIRED

| STATION | LENG | DIAM | LENG | CEMENT RUBBLE MASONRY |
|---------|------|------|------|-----------------------|
| 257+00 | R | 18" | 40' | 3.3 CY |
| 260+00 | R | 12" | 60' | 2.3 CY |

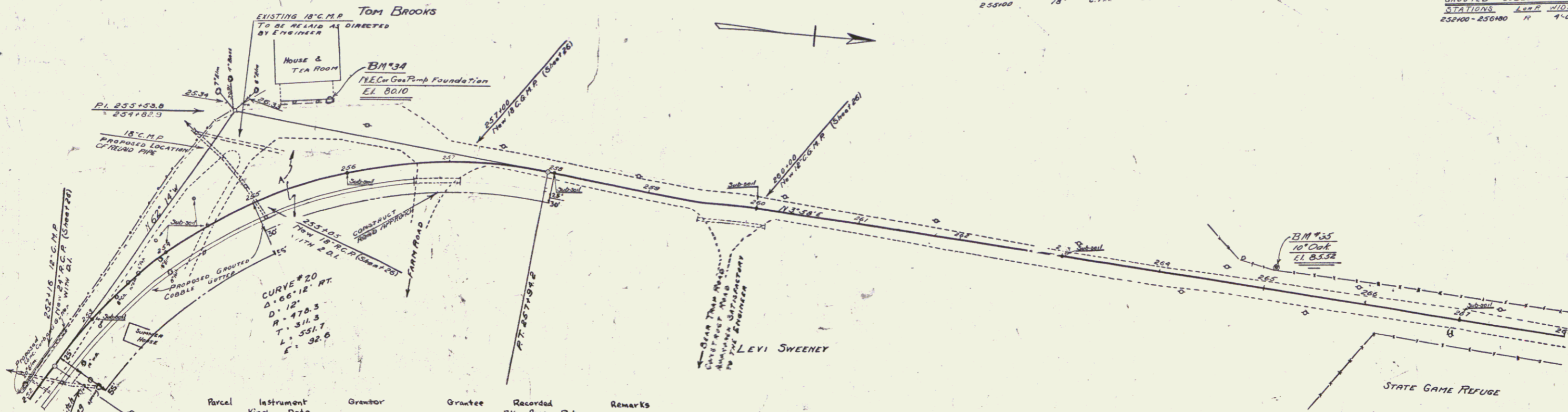
RELAYING PIPE CULVERTS REQUIRED

| STATION | DIAM | TYPE | LENG |
|---------|------|--------|------|
| 255+00 | 18" | C.M.P. | 60' |

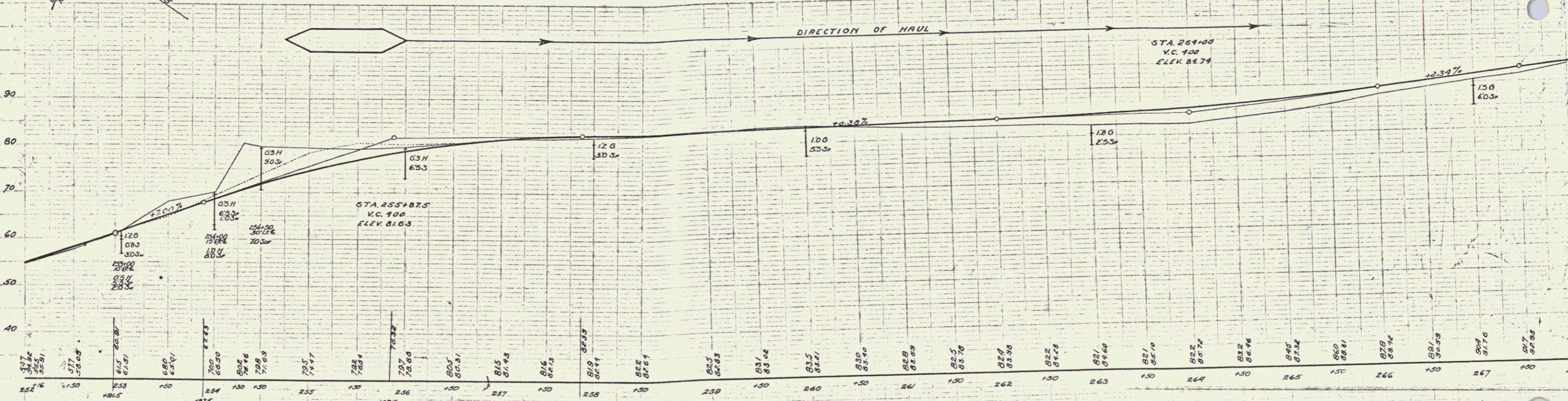
| FED. ROAD DIST. NO. | STATE | FED. AID PROJ. NO. | FISCAL YEAR | SHEET NO. | TOTAL SHEETS |
|---------------------|-------|--------------------|-------------|-----------|--------------|
| 4 | VT | 106A | 1930 | 19 | 63 |

GRADED COBBLE GUTTER REQUIRED

| STATIONS | LENG | WIDTH | LENGTH | AREA |
|-----------------|------|-------|--------|------|
| 252+00 - 253+00 | R | 4'-0" | 100' | 400 |



| Parcel | Instrument Kind | Date | Grantor | Grantee | Recorded BK | Page | Date | Remarks |
|--------|-----------------|---------|------------------------|------------|-------------|------|--------|---------|
| A | W.D. | 2-25-30 | Levi & Matilda Sweeney | St. of Vt. | 26 | 6-7 | 3-3-30 | |



B.M. No. 34 N.E. cor. Gas pump foundation 73' x 510' 256+00 Elev. 80.10
 B.M. No. 35 spike in floor 10' oak 28' x 510' 265+07 Elev. 85.52

SERIES F No. 106A
 SHEET 19 OF 63

WOOD GUARD RAIL REQUIRED
 CULVERT STATION LEFT RIGHT
 276+42 26' 26'

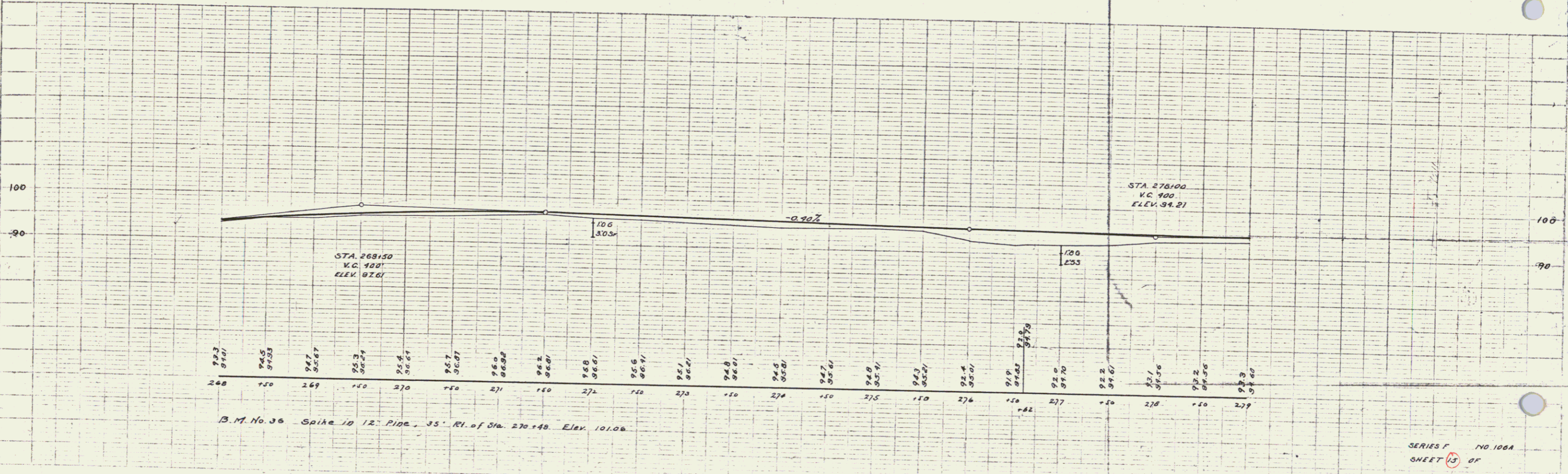
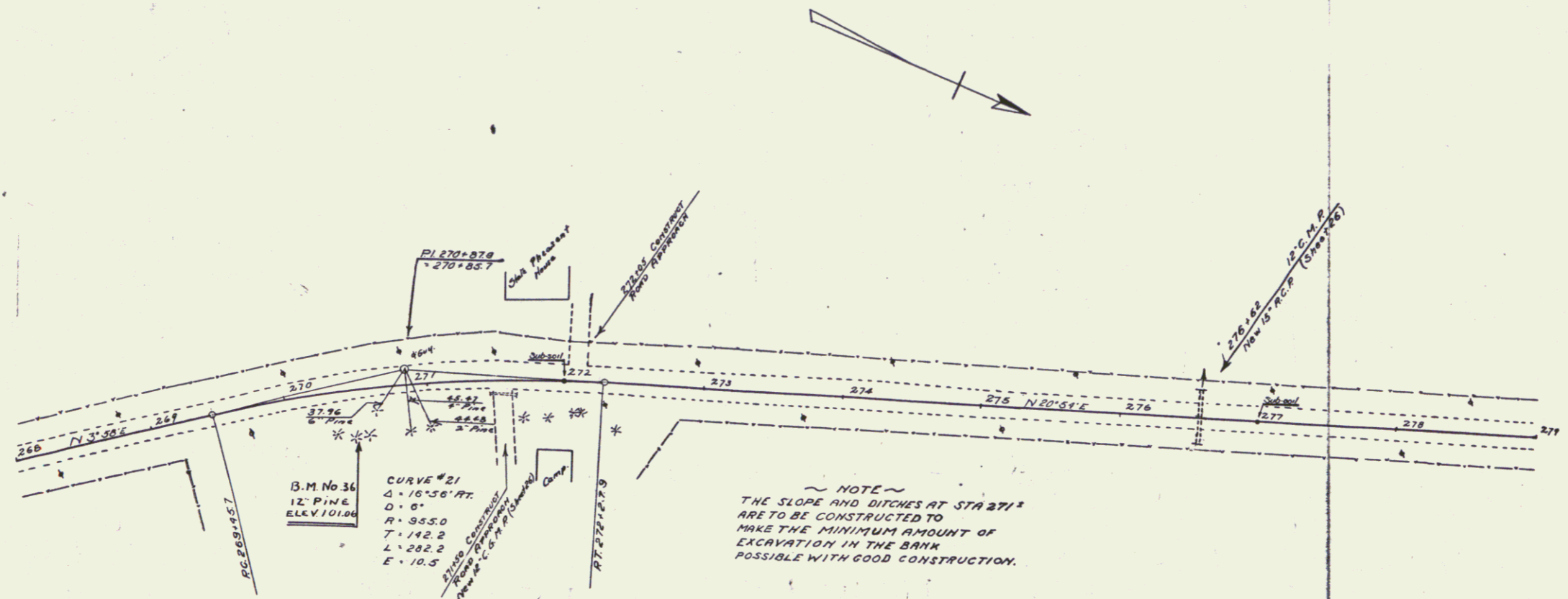
NEW REINFORCED CONCRETE PIPE CULVERTS REQUIRED
 STATION DIRT LEAD CONC. Q. CONC. S. REINFC. STALL
 276+42 15' 40' 23CY. 33'

DRIVEWAY CULVERTS REQUIRED
 (CERR. GR. METAL PIPE)
 STATION LEAD DIAM. LENGTH CEMENT RUBBLE MASONRY
 271+50 18' 20' 23CY.

| FED. AID DIST. NO. | FED. AID YEAR | FISCAL YEAR | SHEET NO. | TOTAL SHEETS |
|--------------------|---------------|-------------|-----------|--------------|
| VT 106A | 1930 | 14 | 65 | |

| | | | |
|------|------|----|---------|
| PLAN | DATE | BY | CHECKED |
| | | | |

| | | |
|------|----|---------|
| DATE | BY | CHECKED |
| | | |

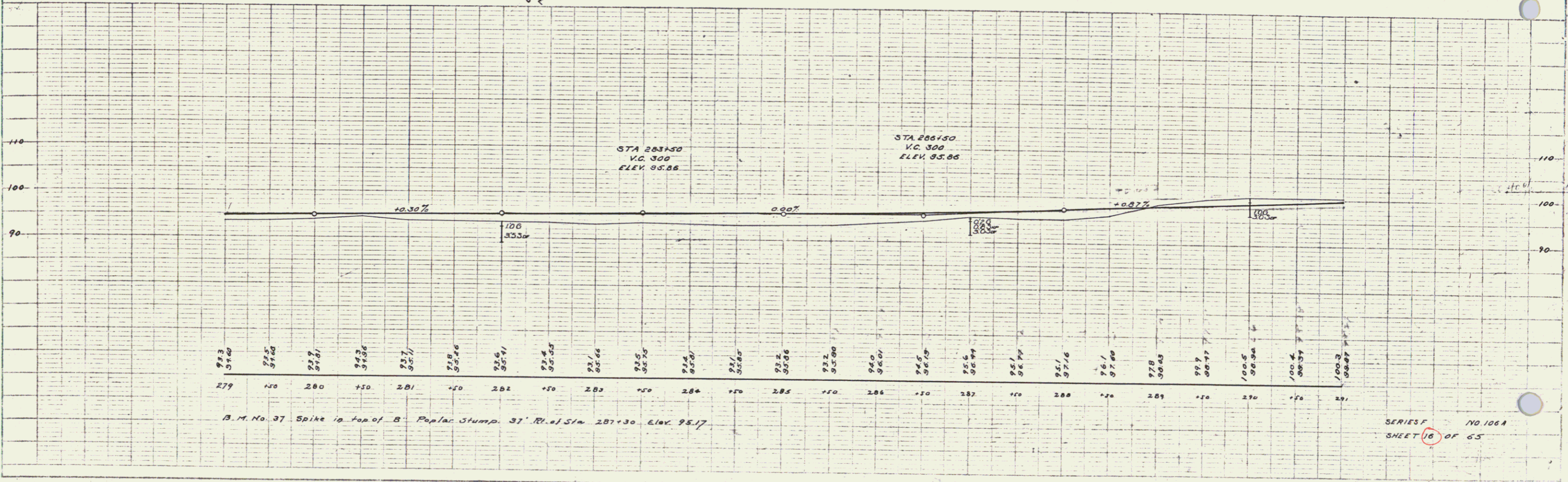
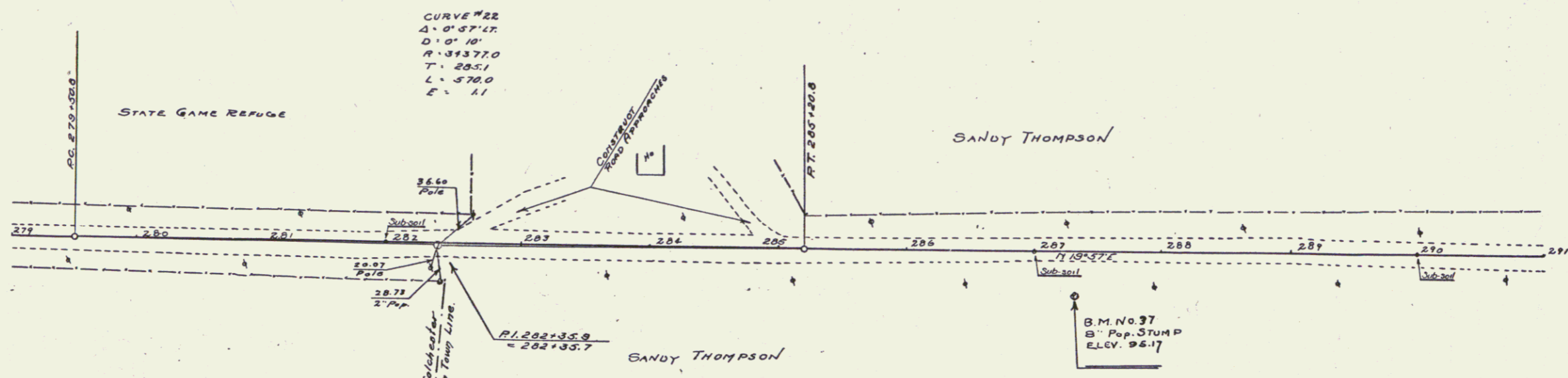


B.M. No. 36 Spike 10 12" Pipe, 35' RI. of Sta. 270+40. Elev. 101.08

SERIES F NO. 106A
 SHEET 13 OF 67

PLAN
 DATE
 DRAWN BY
 CHECKED BY
 IN CHARGE
 NO.

PROJ. NO.
 DATE
 DRAWN BY
 CHECKED BY
 IN CHARGE
 NO.



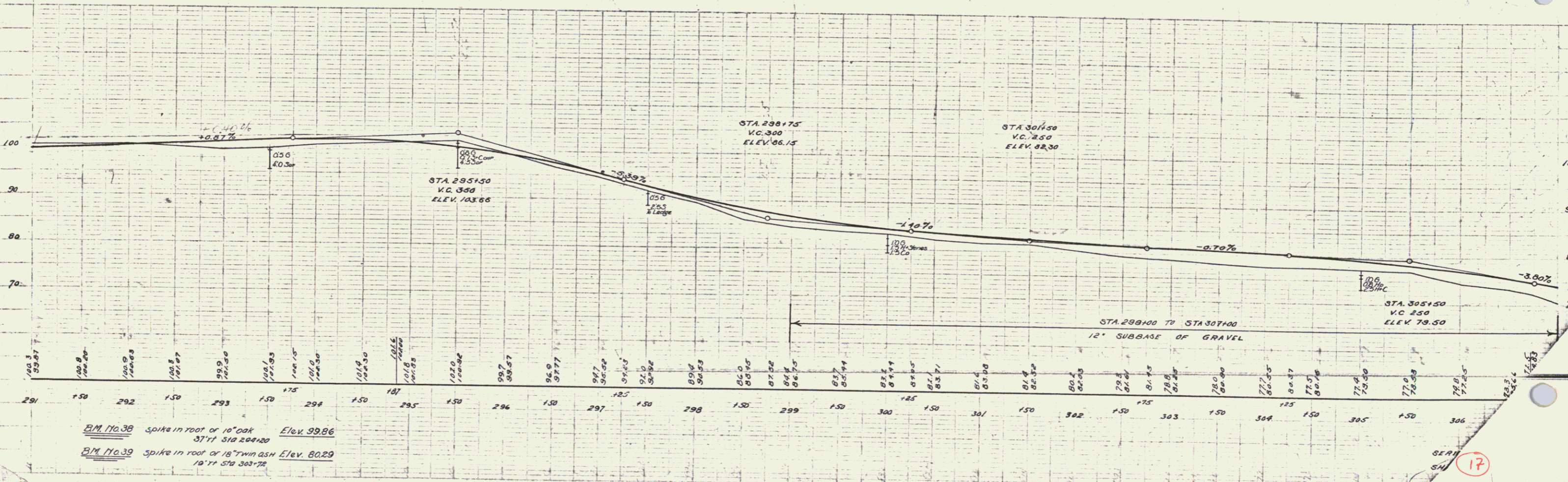
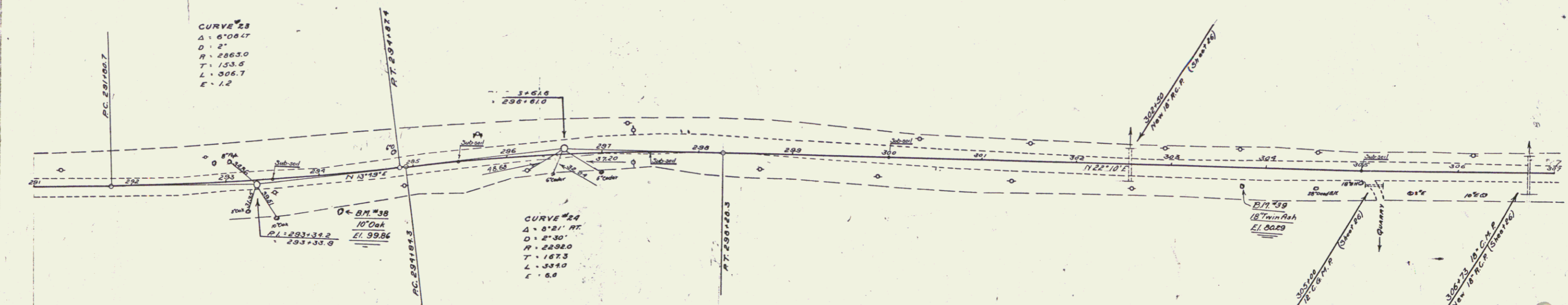
| WOOD GUARD RAIL REQUIRED | |
|--------------------------|------------|
| CULVERT STATION | LEFT/RIGHT |
| 302+50 | 24' 24' |
| 306+73 | 24' |

| CABLE GUARD RAIL REQUIRED | |
|---------------------------|------------|
| STATIONS | LEFT/RIGHT |
| 306+53-307+00 | 41' |

| NEW REINF. CONCRETE PIPE CULVERTS REQUIRED | | | |
|--|------|-------|----------------|
| STATION | DURM | LENG. | CONCR. CONC'D. |
| 302+50 | 18" | 36' | 30 CY |
| 306+73 | 18" | 40' | 33 CY |

| DRIVEWAY PIPE CULVERTS REQUIRED | | | |
|---------------------------------|-------|-------|-----------------------|
| STATION | LENG. | DIAM. | CONSTR. |
| 305+00 | 4' | 20" | CEMENT PUMBLE MASONRY |

| STATE | FED. AID | FISCAL YEAR | SHEET NO. | TOTAL SHEETS |
|-------|----------|-------------|-----------|--------------|
| VT. | 100% | 1930 | 17 | 65 |



B.M. 170.38 spike in root of 10' oak Elev. 99.86
 37' 11\"/>

SEARCH SHEET 17

WOOD GUARD RAIL REQUIRED

| CULVERT STATION | LEFT WIDTH | RIGHT |
|-----------------|------------|-------|
| 313+00 | 24' | 24' |

CABLE GUARD RAIL REQUIRED

| STATIONS | LEFT | RIGHT |
|--------------|------|-------|
| 307+00-318+5 | 6.5' | |

NEW REIN. CONCRETE PIPE CULVERTS REQUIRED

| STATION | DIAM | LEN | CONC. A | REIN. STEEL | DT |
|---------|------|-----|---------|-------------|----|
| 316+00 | 18" | 08' | 28CY | 15CY | 7 |

GROUTED COBBLE GUTTER REQUIRED

| STATIONS | LEN | WIDTH | LENGTH | AREA |
|---------------|-----|-------|--------|-----------|
| 313+30-316+30 | R | 3'-6" | 300' | 1173q Yds |

CONCRETE CRIBBING REQUIRED

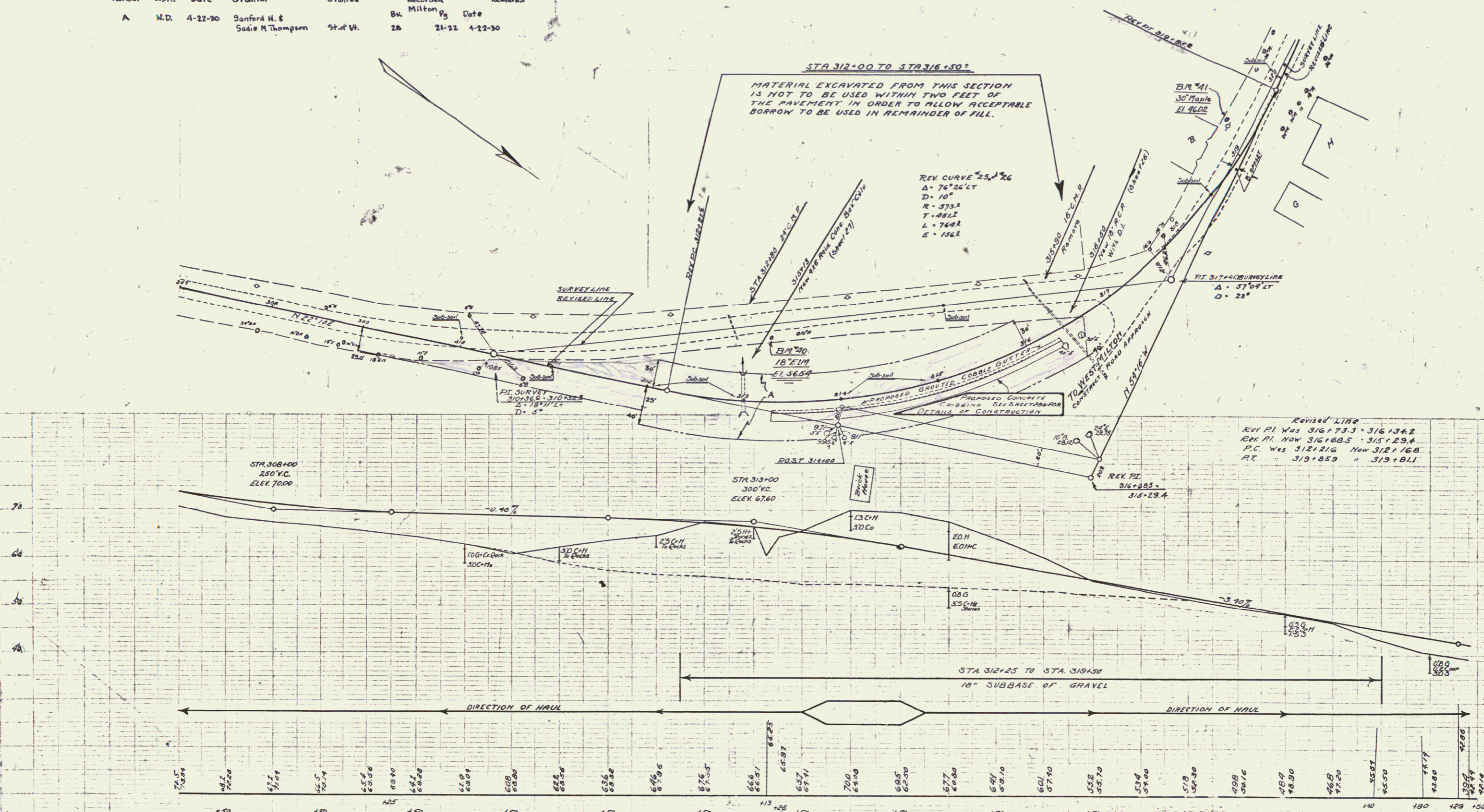
| STATIONS | LEN | WIDTH | LENGTH | QUANTITY |
|---------------|-----|-------|--------|-------------|
| 313+30-316+30 | R | | 300' | 1343 Cu Yds |

| FED. ROAD DIST. NO. | STATE | FED. AID PROJ. NO. | FISCAL YEAR | SHEET NO. | TOTAL SHEETS |
|---------------------|-------|--------------------|-------------|-----------|--------------|
| 9 | VT | 106A | 1930 | 18 | 65 |

NEW REIN. CONCRETE BOX CULVERTS REQUIRED

| STATION | SIZE | CONC. A | REIN. STEEL |
|---------|------|---------|-------------|
| 313+13 | 9x6 | 21CY | 260' |

| Parcel | Instr. | Date | Grantor | Grantee | Recorded Bk. | Milton Vg. | Date | Remarks |
|--------|--------|---------|--------------------------------|--------------|--------------|------------|---------|---------|
| A | M.D. | 4-22-30 | Sanford H. & Sadie M. Thompson | State of Vt. | 2b | 21-21 | 4-22-30 | |



Revised LINE
 Key PI was 316+73.3 - 316+134.8
 Key PI Now 316+85.5 - 316+29.4
 P.C. Was 312+216 Now 312+16.8
 P.T. 319+85.9 - 319+81.1

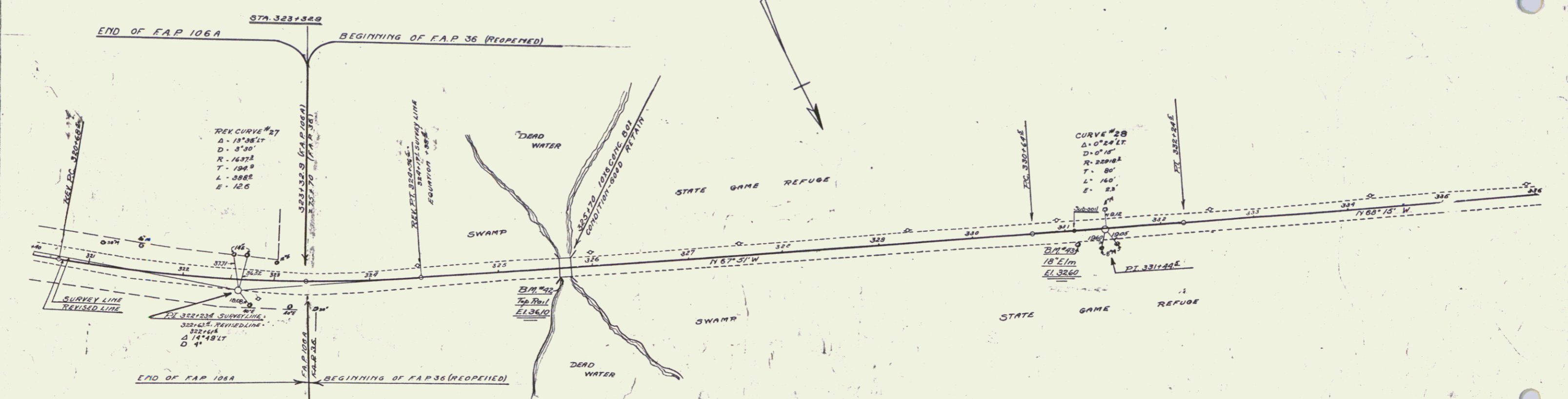
BM 1040 spike in root of 18\" E1m 17\" 11\" STA 313+00 Elev. 56.54
 BM 1041 spike in root of soft maple 27\" 11\" STA 318+02 Elev. 46.02

SERIES F 170/000
 SHEET 18 OF 65

WOOD GUARDRAIL REQUIRED

| STATION | LEFT | RIGHT |
|-----------------|------|-------|
| 325+00 - 325+75 | 24' | 24' |
| 325+75 - 326+00 | 24' | 20' |

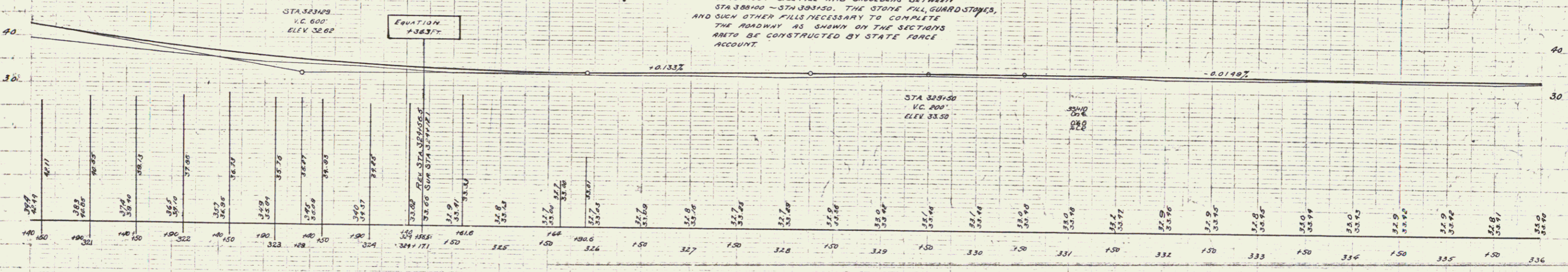
| FED. ROAD DIST. NO. | STATE | FISCAL YEAR | SHEET NO. | TOTAL SHEETS |
|---------------------|-------|-------------|-----------|--------------|
| 108A | MD | 1930 | 19 | 65 |



Revised Curve No 27
 P.I. 322+23.4 Sup. Line = P.I. 322+6.34 End Line = 322+41.6
 N.W. P.I. 322+23.4 - P.I. 322+59.3 - P.I. 322+57.4
 Δ was 13°35' Now 13°36' PC was 320+68.5 Now 320+64.1
 D = 37.30 Same PT = 324+16.5 Now 324+52.6
 R = 1632.9 Same
 T = 194.9 Same
 L = 50.00 Same
 E = 12.6 Same

NOTE
 STA 323+32.9 TO STA 328+63.5
 ALL NECESSARY EXCAVATION THAT IS MADE UNDER THE PAVEMENT IS TO BE USED AS FILL MATERIAL UNDER THE SLAB. ALL ADDITIONAL MATERIAL THAT MAY BE REQUIRED AS A WRAPING COURSE TO BRING THE SUB GRADE UNDER THE PAVEMENT TO FINISHED SUB GRADE SHALL BE OF GRAVEL AND PAID FOR AS SUB BASE OF GRAVEL.

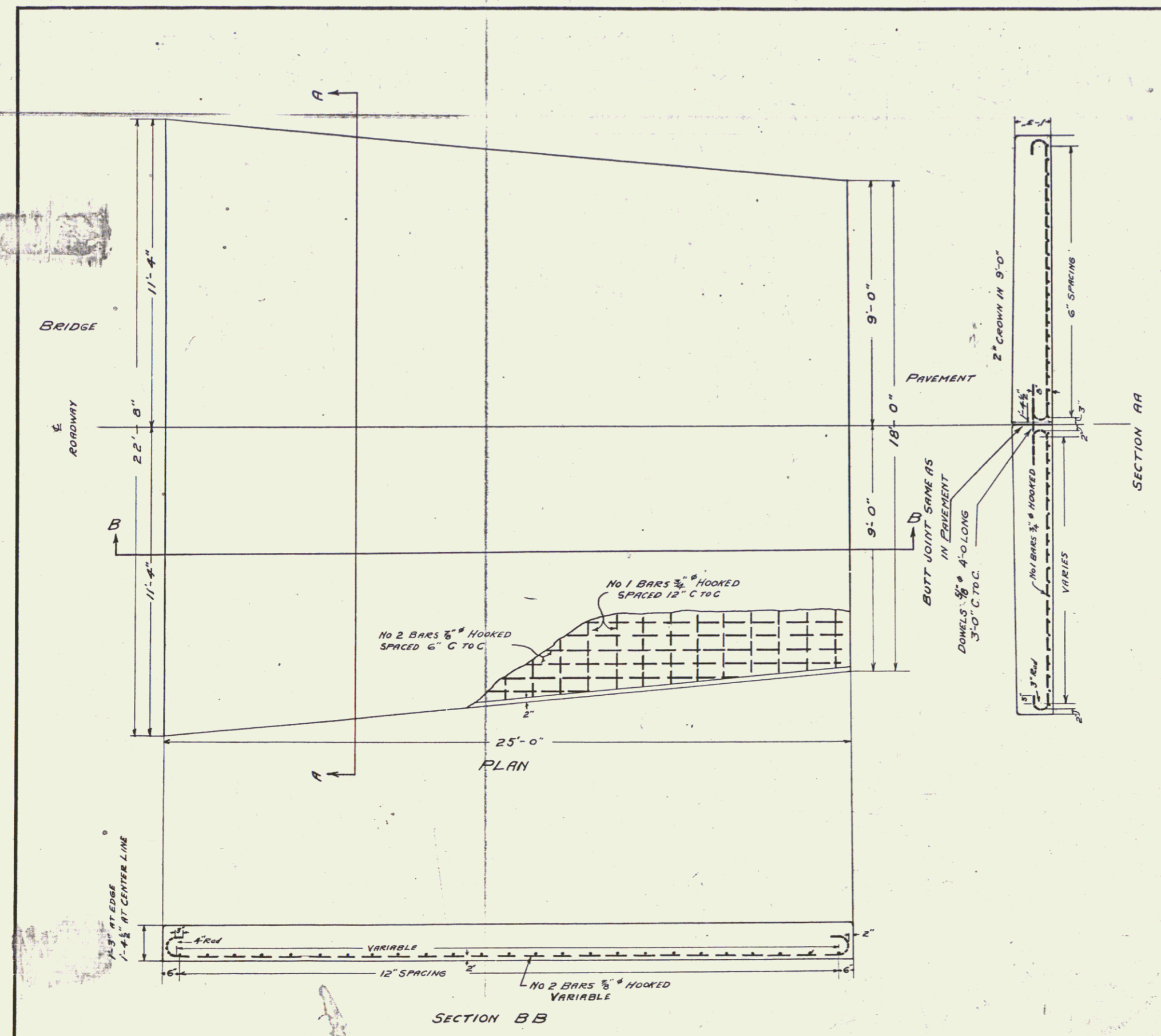
NOTE
 ON F.A.P. 36 + F.A.P. 29 (REOPENED)
 THE QUANTITIES OF BORROW AS GIVEN ON THE EARTHWORK SHEETS ARE ONLY APPROXIMATE. THE INTENT OF THE PLANS IS THAT THE CONTRACTOR IS TO CONSTRUCT SUCH SIDE FILLS AND SHOULDERS AS ARE NECESSARY TO HOLD FORMS AND PAVEMENT. THE CONTRACTOR IS ALSO EXPECTED TO CONSTRUCT SIDE FILL AND SHOULDERS BETWEEN STA 328+00 - STA 328+50. THE STONE FILL GUARDSTONES AND SUCH OTHER FILLS NECESSARY TO COMPLETE THE ROADWAY AS SHOWN ON THE SECTIONS ARE TO BE CONSTRUCTED BY STATE FORCE ACCOUNT.



B.M. No. 42 Top of concrete bridge rail 11 ft. Sta 325+64 Elev. 36.10
 B.M. No. 43 spike in roof 18" Elm 13 ft. Sta 331+12 Elev. 32.60

SERIES F NOS 108A-36
 SHEET 19 OF 65

| | | | | | |
|-----------|-------|-----------|------|-----|-------|
| DIST. NO. | STATE | PROJ. NO. | YEAR | NO. | SHEET |
| 1 | VT. | 106A | 1930 | 30 | 65 |



DETAILS
OF
APPROACH SLAB
FOR
BRIDGE AT STA 438+00
FAP29 REOPENED
NON-GOV'T PARTICIPATION
SCALE 1/2" = 1'-0"

Reinforcing in slab to be paid
for as Reinforcing Steel - Item 35.

| | |
|---|-----------|
| QUANTITIES FOR TWO APPROACH SLABS | |
| ONE COURSE CEMENT CONCRETE PAVEMENT | 49.4 C.Y. |
| REINFORCING STEEL | 6060 LBS. |

| | |
|-------------|----------|
| Surveyed by | |
| Designed by | |
| Drawn by | H.W.M. |
| Traced by | R.J.M. |
| Checked by | M.W.D. |
| Series | TA |
| No. | 106A |
| Filed | |
| Sheet | 30 of 65 |