

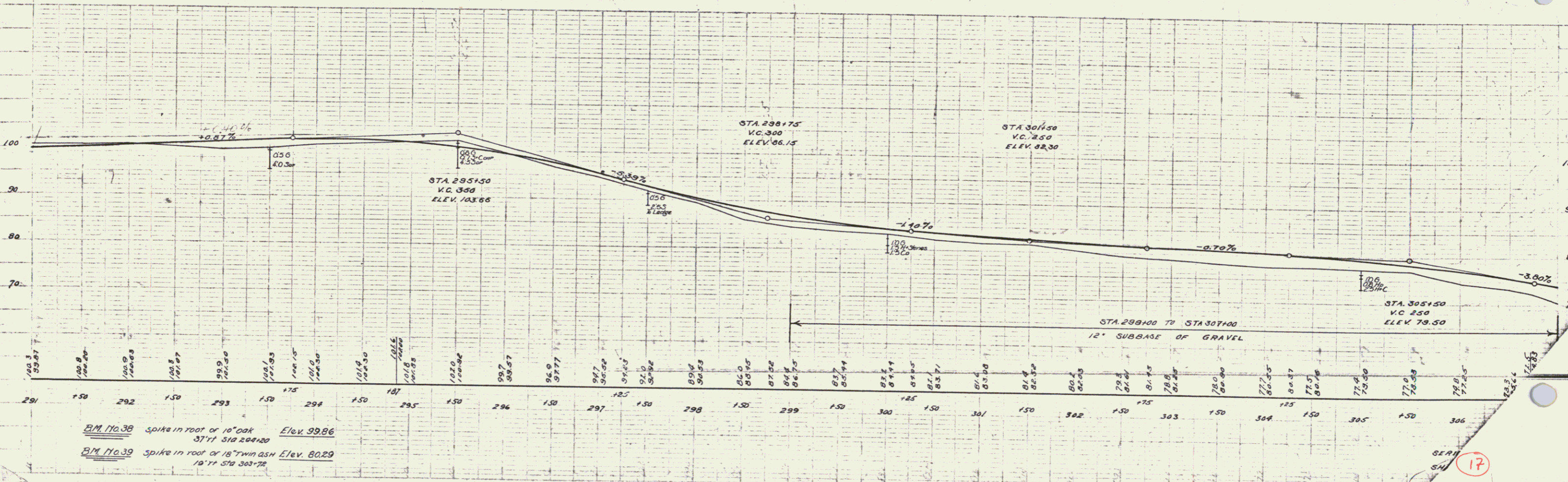
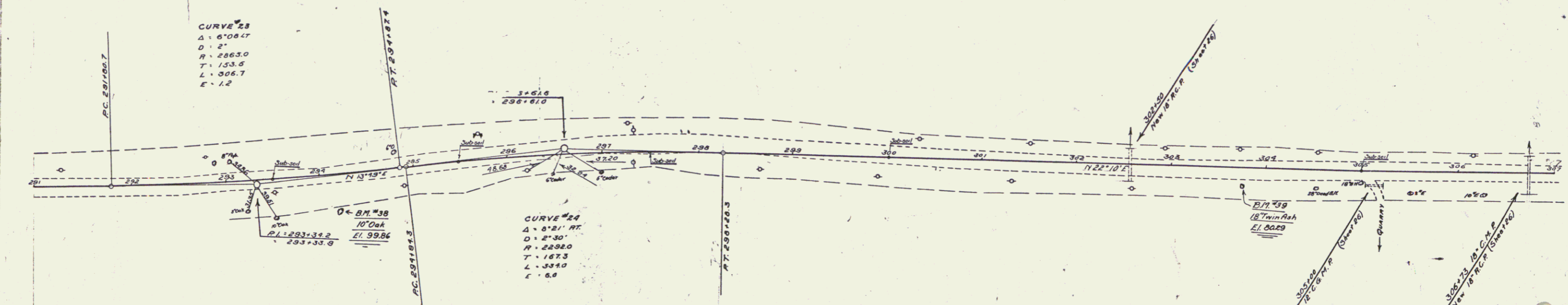
WOOD GUARD RAIL REQUIRED	
CULVERT STATION	LEFT/RIGHT
302+50	24' 24'
306+73	24'

CABLE GUARD RAIL REQUIRED	
STATIONS	LEFT/RIGHT
306+53-307+00	41'

NEW REINF. CONCRETE PIPE CULVERTS REQUIRED			
STATION	DURM	LENG.	CONCR. CONC'D.
302+50	18"	36'	30 CY
306+73	18"	40'	33 CY

DRIVEWAY PIPE CULVERTS REQUIRED			
STATION	LENG.	DIAM.	CONSTR.
305+00	4'	20"	CEMENT PUMBLE MASONRY

STATE	FED. AID	FISCAL YEAR	SHEET NO.	TOTAL SHEETS
VT.	100%	1930	17	65



B.M. 170.38 spike in root of 10' oak Elev. 99.86
 37' 11\"/>

SEARCH SHEET 17

16