

WOOD GUARD RAIL REQUIRED  
 CULVERT STATION LEFT RIGHT  
 276+42 26' 26'

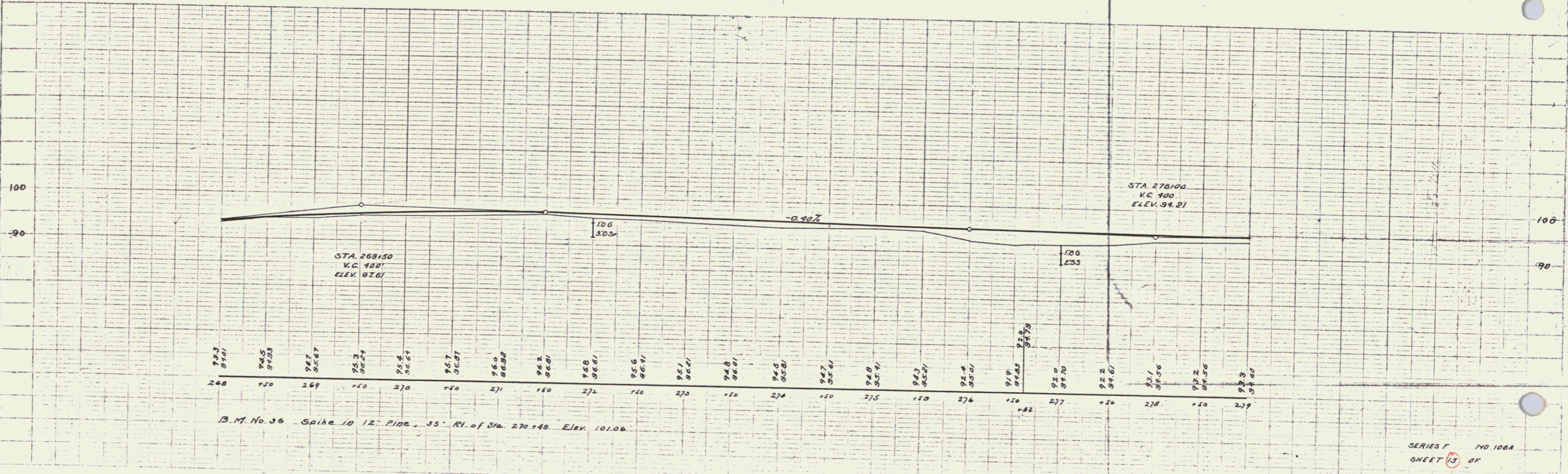
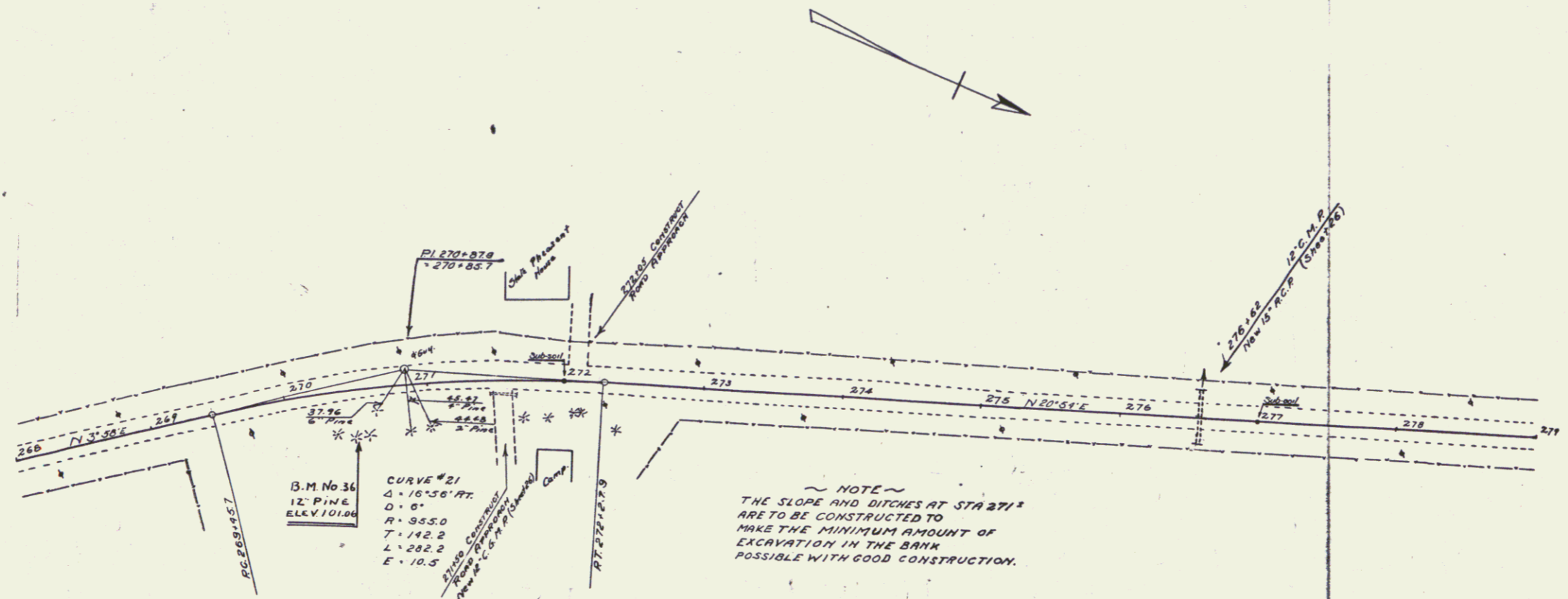
NEW REINFORCED CONCRETE PIPE CULVERTS REQUIRED  
 STATION DIRT LEAD CONC. DIA. CONC. L.S. REINFC. STALL  
 276+42 15' 40' 23CY. 33"

DRIVEWAY CULVERTS REQUIRED  
 (CERR. GR. OR METAL PIPE)  
 STATION LEAD DIA. LENGTH CEMENT RUBBLE MASONRY  
 271+50 12' 20' 23CY.

FED. AID DIST. NO.	FED. AID YEAR	FISCAL YEAR	SHEET NO.	TOTAL SHEETS
VT 106A	1930	14	65	

PLAN	DATE	BY	CHECKED

DATE	BY	CHECKED



SERIES F NO. 106A  
 SHEET 13 OF 67

14