

WOOD GUARDRAIL REQUIRED

CULVERT STATION	LEFT	RIGHT
230+03	84'	
231+43 Bridge	24'	
234+79 Bridge	20'	

CABLE GUARDRAIL REQUIRED

STATIONS	LEFT	RIGHT
225+00 - 225+60	64'	60'
229+43 - 231+43	200'	
234+79 - 235+99	120'	

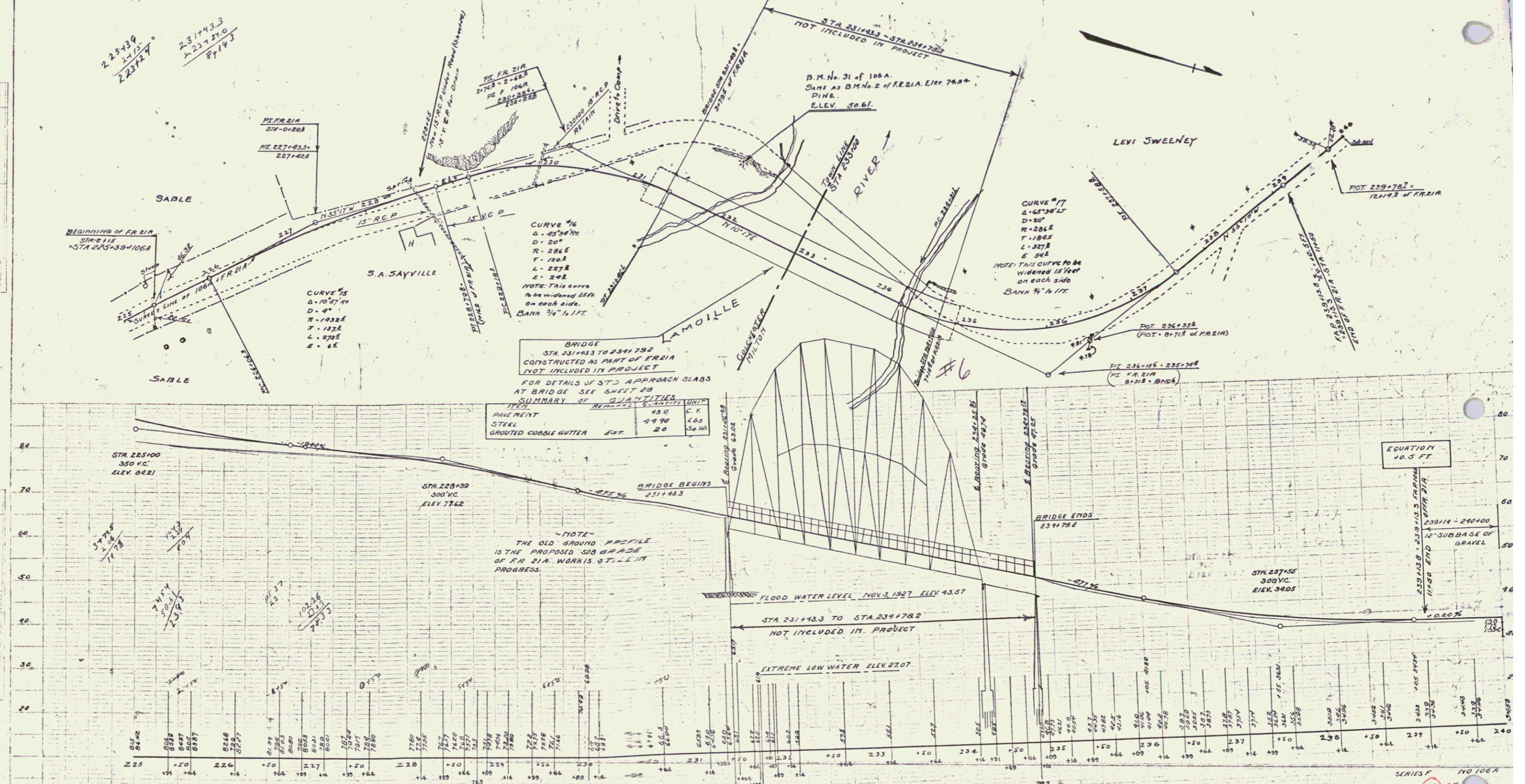
NEW REINFORCED CONCRETE PIPE CULVERTS REQUIRED

STATION	DIAM.	LENG.	CONG. A	CONG. C	REIN. STEEL #1	PRECAST
228+18	15"	40'	1.5CY	12CK	77#	

VITRIFIED CLAY PIPE REQUIRED

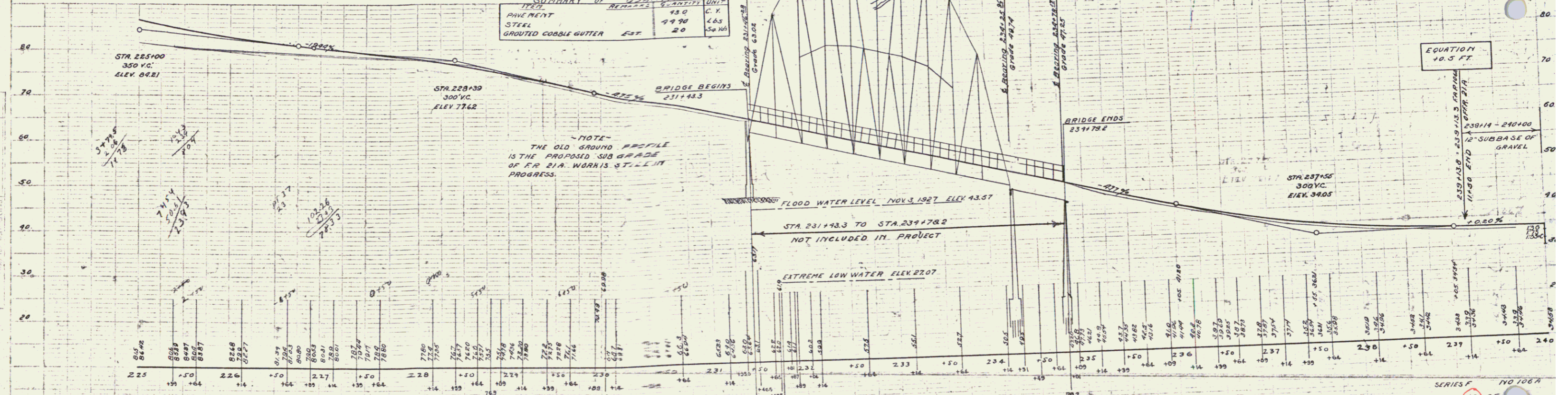
STATION	DIAM.	LENG.	CONG. C	REIN. STEEL
221+55	15"	60'	1.2CY	17#

STATE OF CALIFORNIA
 COUNTY OF LOS ANGELES
 PROJECT NO. 106A 1930 12 65



BRIDGE STA 231+43.3 TO 234+79.2
 CONSTRUCTED AS PART OF F.R. 21A
 NOT INCLUDED IN PROJECT
 FOR DETAILS OF STD. APPROACH SLABS
 AT BRIDGE SEE SHEET 29
 SUMMARY OF QUANTITIES

ITEM	QUANTITY	UNIT
PAVEMENT	43.0	SQ. YD.
STEEL	99.90	LBS.
GRADED COBBLE GUTTER	20	LINEAL FEET



B.M. No. 31 of 106A. Elev. 50.61 of Pipe
 Same as B.M. No. 2 of F.R. 21A. Elev. 74.54

SERIES F
 SHEET 12 OF 106A