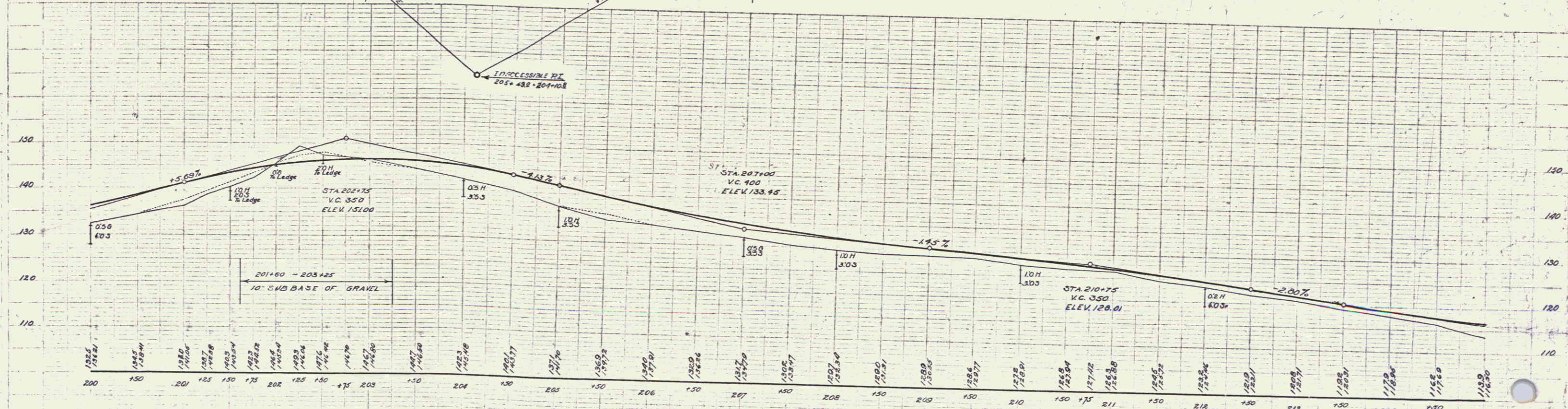
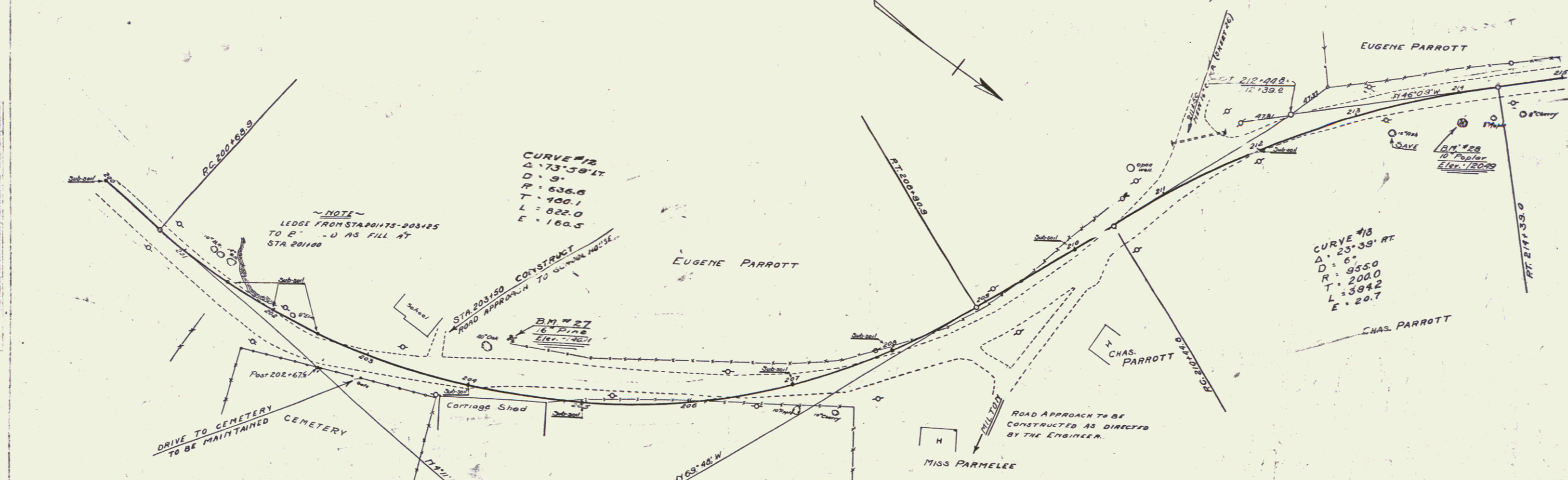


CABLE GUARD RAIL REQUIRED
 STATIONS LEFT RIGHT
 200+00-201+36 136'

DRIVEWAY SIDE CULVERTS REQUIRED
 16" DIA. CONC. PIPE
 16' 50" 2.7' C.V.

NO. 106A 1830 70 65



B.M. No 27 - spike in root 15" pine 45' left 510 204+31 ELEV. 140.11
B.M. No 28 - spike in root 10" Poplar 26' Rt 510 214+00 ELEV. 120.19

SERIES F 110.106A
 SHEET 10 OF 65

9