

**WOOD GUARDRAIL REQUIRED**

CULVERT STATION	LEFT	RIGHT
189+18	24'	24'

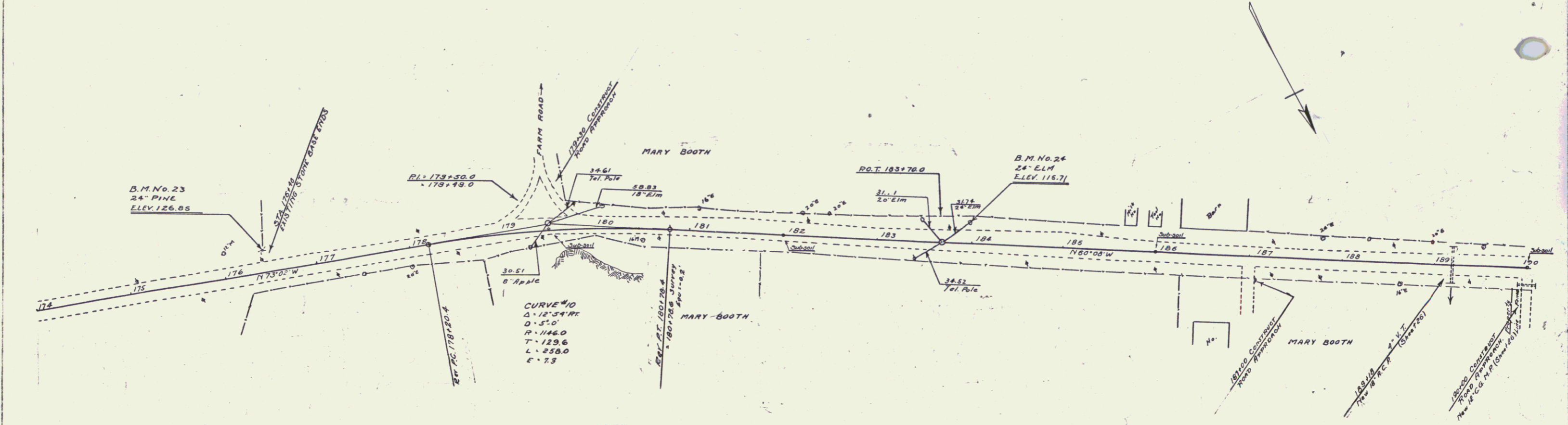
**NEW REINF CONCRETE PIPE CULVERTS REQUIRED**

STATION	DIAM.	LENG.	CONC. A	CONC. C	REINF. STEEL
189+18	18"	36'	30 C.Y.	30 C.Y.	33'

**DRIVEWAY PIPE CULVERTS REQUIRED**

STATION	LEN. R.	DIAM.	LENG.	CEMENT RUMBLE MASONRY
180+00	R	18"	28'	23 C.Y.

FED. ROAD DIST. NO.	STATE	FED. AID PROJ. NO.	FISCAL YEAR	SHEET NO.	TOTAL SHEETS
9	VT.	106A	1956	61	65



**SUB-SOIL CLASSIFICATION**

Humus	H
Gravel	G
Sand	S
Silt	St.
Clay	C
Quicksand	Q
Ledge	L

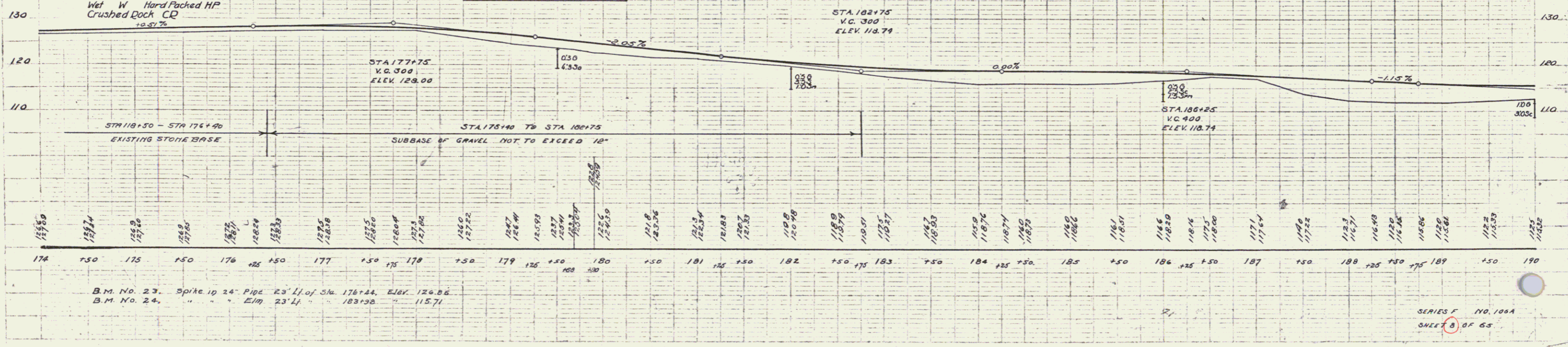
**LEGEND**

Dry	D	Pine	F
Moist	M	Coarse	C
Wet	W	Hard Packed	HP
Crushed Rock	CR		

10.57%

Date of Investigation  
Nov. 20, 22-23-27  
Dec. 2-3, 1929

Curve No. 10 Revised  
 $PI = 179+50.0 = 179+49.0$   
 $PI = 179+50.0 = 179+48.8$   
 $\Delta = 12^\circ 34' 18'' = 12^\circ 34'$   
 $D = 6' 0'' = 5' 0''$   
 $R = 1146.0 = 1146.0$   
 $T = 129.6 = 129.6$   
 $L = 259.0 = 259.0$   
 $E = 7.3 = 7.3$   
 $PC = 178+50.0 = 178+50.0$   
 $PT = 180+125.0 = 180+125.0$   
 $Equ = -0.2 = -0.2$



B.M. No. 23. Spike in 24" Pipe 23' 11" of Sta. 176+44. Elev. 126.85  
 B.M. No. 24. " " " ELM 23' 11" " 183+36 " 116.71

SERIES F NO. 106A  
SHEET 61 OF 65