

**WOOD GUARD RAIL REQUIRED**

CULVERT STATION	LEFT	RIGHT
163+05	24'	24'
172+34	24'	24'

**NEW REIN. CONCRETE PIPE CULVERTS REQUIRED**

STATION	DIAM	LENG	CONC-A	CONC-C	REIN. STEEL
163+05	30"	40'	382X		5#

**CULVERT REPAIRS REQUIRED G.G.M.S.**

STATION	DIAM	LENG	CONC-C	REIN. STEEL
172+34	42"	0'	302X	3#

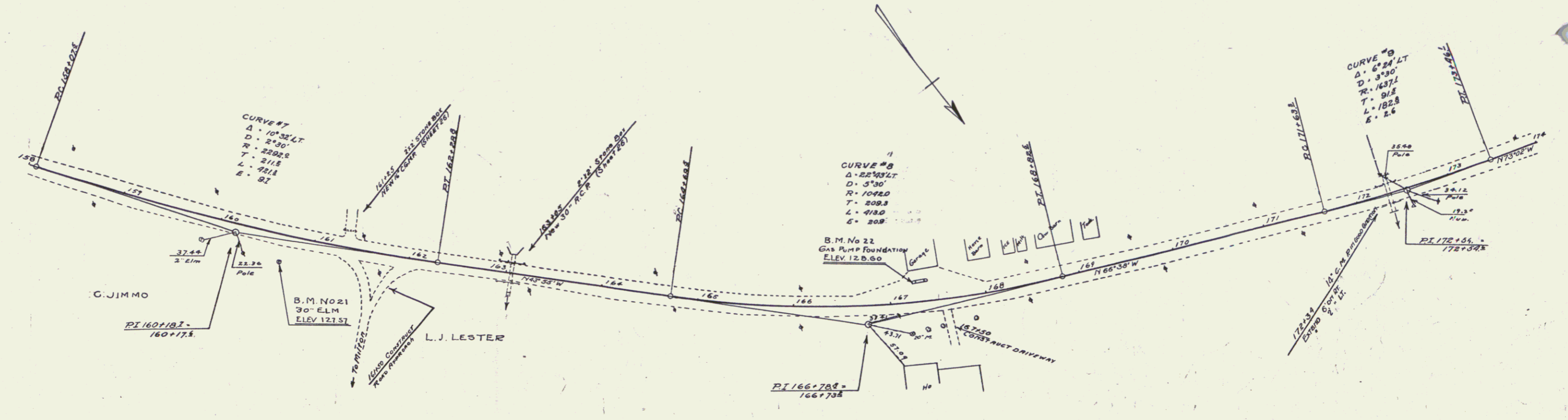
**DRIVEWAY PIDS CULVERTS REQUIRED**

STATION	DIAM	LENG	CONC	REIN. STEEL
161+55	16"	20'	270X	

FED. ROAD DIST. NO.	STATE	FED. AID PROJ. NO.	FISCAL YEAR	SHEET NO.	TOTAL SHEETS
9	VT.	106A	1930	7	63

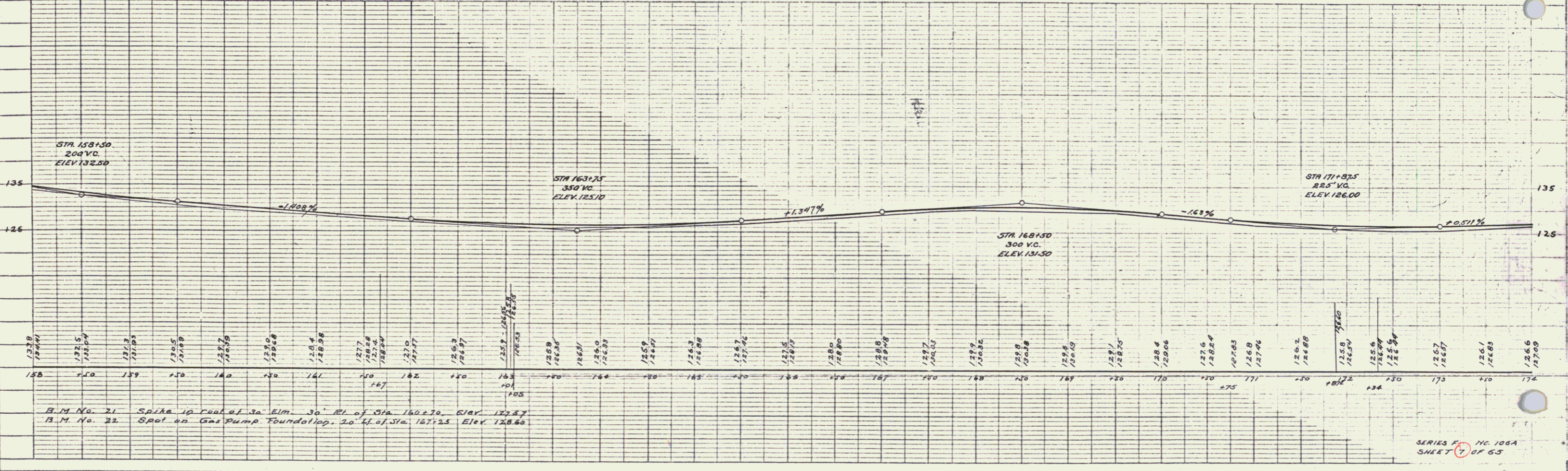
**PLAN**

DESIGNED BY: \_\_\_\_\_  
 DRAWN BY: \_\_\_\_\_  
 CHECKED BY: \_\_\_\_\_  
 DATE: \_\_\_\_\_



**PROFILE**

DESIGNED BY: \_\_\_\_\_  
 DRAWN BY: \_\_\_\_\_  
 CHECKED BY: \_\_\_\_\_  
 DATE: \_\_\_\_\_



B.M. No. 21 Spike 10' from 30' Elm 30' RI of Sta 160+70. Elev 122.57  
 B.M. No. 22 Spot on Gas Pump Foundation, 20' LI of Sta. 167+25 Elev 128.60

6