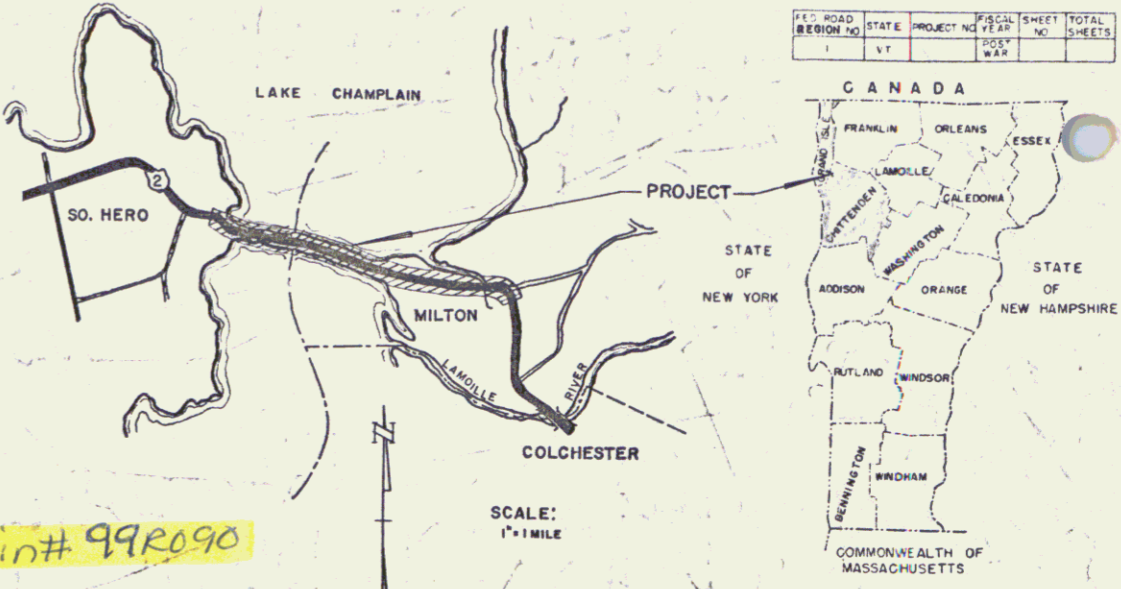


INDEX OF SHEETS

SHEET NO	TITLE PAGE NAME
1	TITLE PAGE
2	TYPICAL CROSS SECTIONS OF IMPROVEMENT.
3	QUANTITY SHEET-ITEMS.
4	QUANTITY SHEET-DRAINAGE.
5-8	EARTHWORK SHEETS.
9-21	PLAN AND PROFILE SHEETS.
22	PLAN AND ELEVATION OF 16'-7"x10'-1"x102' COMPPA.
23	DETAIL SHEET OF WEIR.
24	STEEL DETAIL SHEET OF WEIR.
25	RS-56-1 BANKING TABLES.
26	RS-56-3 BOUNDARY MARKERS AND PLANK GUARD RAIL.
27	RS-56-4 DRAINAGE.
28	C-1 CURBS.
29	RS-56-6 TYPICAL GRADING AND TURNOUTS.
30	A-EI DRILLING AND BLASTING-SOLID ROCK SUB-GRADE.
31	RS-56-II 3 CABLE GUARD RAIL WITH STEEL POSTS.
32	RS-56-12 BARRICADES, SIGNS AND LIGHTS.
33	BRIDGE PLAN AND PROFILE SHEET.
34	SUPERSTRUCTURE DETAIL SHEET.
35	ABUTMENT NO. 1 AND NO. 2 DETAIL SHEET.
36	APPROACH SLAB DETAIL SHEET.
37	REINFORCING STEEL DETAIL SHEET.
38	SB-20-56 DETAILS A, B, C, F, G, H, K.
39	SB-50-57 SHEETS 1 & 2, RAILING.
40	SCB-42-58 SHEETS 1 & 2, STANDARD SUPERSTR.
41	SB-AS-50-57 APPROACH SLAB (AS MODIFIED).
42	BS-56-2 BARRICADES, SIGNS AND LIGHTS.
43-104	CROSS SECTION SHEETS.

(To Be Returned To R.O.W. Division)
 Form of U.S. 2
 PERPETUAL
 TOWN FILE
 RIGHT-OF-WAY DIVISION

STATE OF VERMONT
 DEPARTMENT OF HIGHWAYS
PROPOSED IMPROVEMENT
 FEDERAL AID PROJECT
TOWNS OF MILTON-SO. HERO
COUNTIES OF CHITTENDEN-GRAND ISLE
U.S. ROUTE 2
COLCHESTER-SO. HERO ROAD



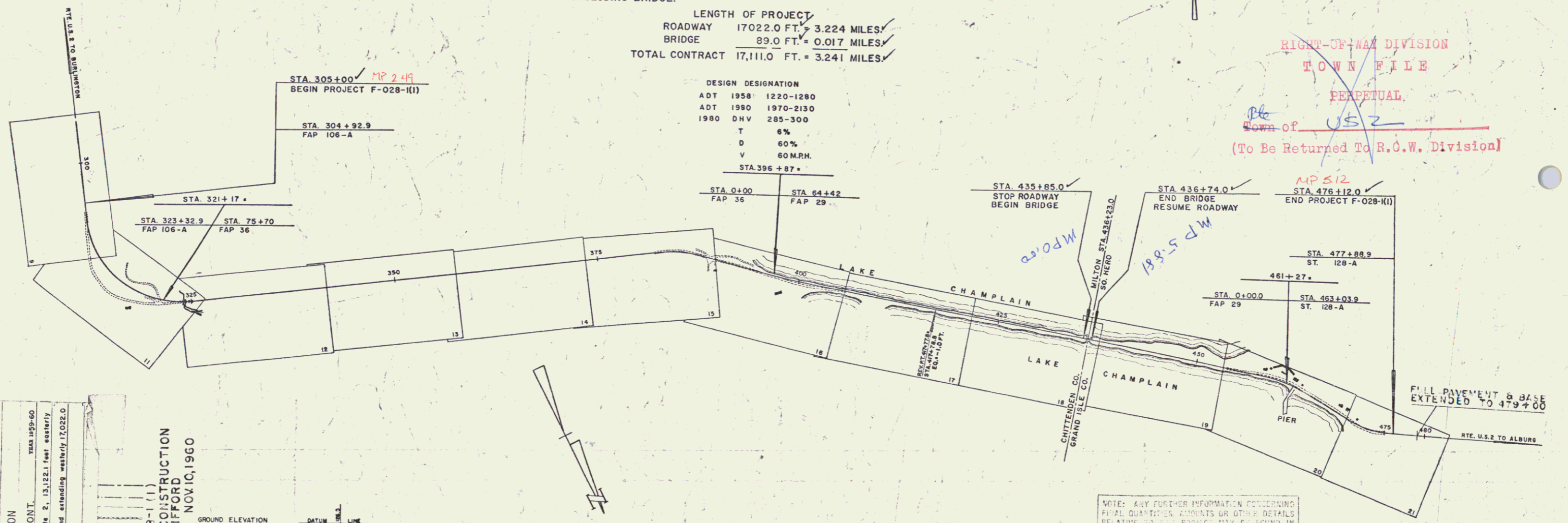
BEGINNING AT A POINT ON U.S. ROUTE 2, 1,3122.1 FT. EASTERLY OF THE MILTON-SOUTH HERO TOWN LINE, AND EXTENDING WESTERLY 17022.0 FT. EXCLUDING BRIDGE.

LENGTH OF PROJECT
 ROADWAY 17022.0 FT. = 3.224 MILES
 BRIDGE 89.0 FT. = 0.017 MILES
 TOTAL CONTRACT 17,111.0 FT. = 3.241 MILES

DESIGN DESIGNATION

ADT 1958	1220-1280
ADT 1980	1970-2130
1980 DNV	285-300
T	6%
D	60%
V	60 M.P.H.
STA. 396 + 87 *	

RIGHT-OF-WAY DIVISION
 TOWN FILE
 PERPETUAL
 Form of U.S. 2
 (To Be Returned To R.O.W. Division)



MILTON-SO. HERO
 PROJECT F-028-1(1)
 LENGTH 3.241 MI.
 3" BITUMINOUS CONCRETE PAVEMENT

CONTRACTOR
 OLSON CONSTRUCTION
 MONTPELIER, VERMONT.
 Location Beginning at a point on U.S. Route 2, 13,122.1 feet easterly of the Milton-South Hero Town Line, and extending westerly 17,022.0 feet, including bridge.

MILTON-SO. HERO F-028-1(1)
 RECORD PLANS, OLSON CONSTRUCTION
 CONTRACTOR SV. CLIFFORD
 CONTRACT COMPLETED NOV 10, 1958

GROUND ELEVATION DATUM 1975 LINE
 GRADE ELEVATION DATUM 1975 LINE

CURVE DATA
 DEFLECTION OF ANGLE Δ
 DEGREE OF CURVE D
 RADIUS OF CURVE R
 TANGENT DISTANCE T
 LENGTH OF CURVE L
 EXTERNAL DISTANCE E
 POINT OF INTERSECTION P.I.
 POINT OF CURVE P.C.
 POINT OF TANGENT P.T.
 POINT ON TANGENT POT
 POINT ON SUB-TANGENT POST

SCALES

TITLE	1" = 800'
TYPICAL	1" = 3'
PLAN	1" = 50'
PROFILE HORIZONTAL	1" = 50'
PROFILE VERTICAL	1" = 10'
CROSS-SECTIONS	1" = 5'

NOTE: ANY FURTHER INFORMATION CONCERNING FINAL QUANTITIES, ACCOUNTS OR OTHER DETAILS RELATIVE TO THIS PROJECT MAY BE FOUND IN EITHER THE FIELD BOOKS OR THE ESTIMATE FILE.

THESE PLANS ARE SUBJECT TO SUCH REVISIONS AS MAY BE REQUIRED BY THE BUREAU OF PUBLIC ROADS OR THE COMMISSIONER OF HIGHWAYS.

CONSTRUCTION IS TO BE CARRIED ON IN ACCORDANCE WITH THE PLANS AND THE STANDARD SPECIFICATIONS FOR HIGHWAY AND BRIDGE CONSTRUCTION OF JANUARY 1956 SUBMITTED TO THE BUREAU OF PUBLIC ROADS AS APPROVED JULY 5, 1956 INCLUDING ALL SUBSEQUENT APPROVED REVISIONS AND SUCH REVISED SPECIFICATIONS AND SPECIAL PROVISIONS AS ARE SUBMITTED WITH THE PLANS.

DEPARTMENT OF COMMERCE
 BUREAU OF PUBLIC ROADS

APPROVED _____ DATE _____

DIVISION _____ ENGINEER _____ DATE _____

PROJECT F NO. 028-1(1)

SHEET 1 OF 104 SHEETS

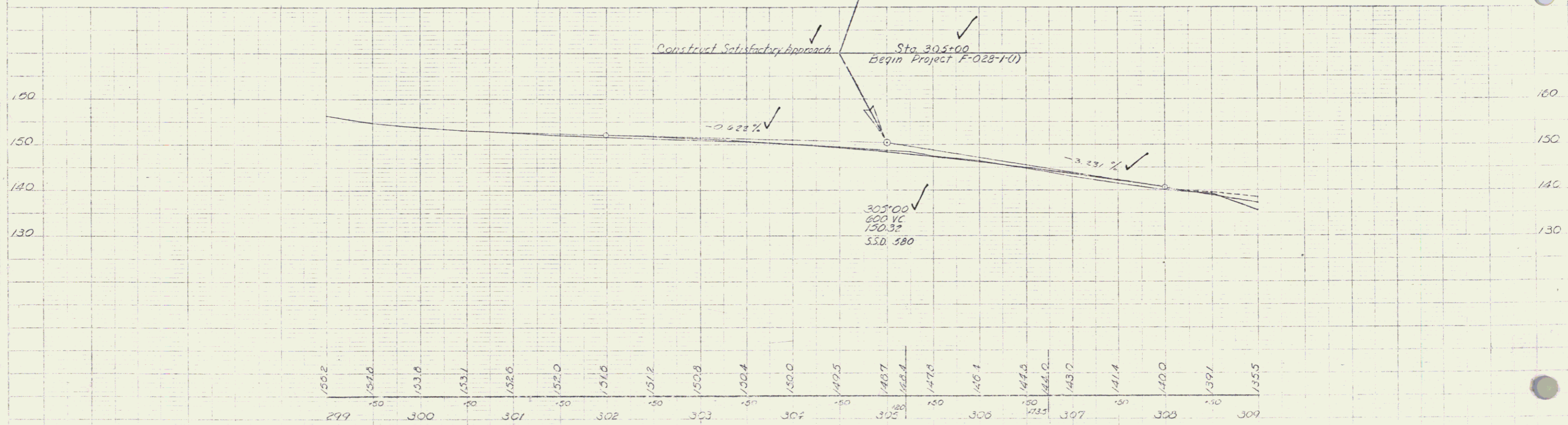
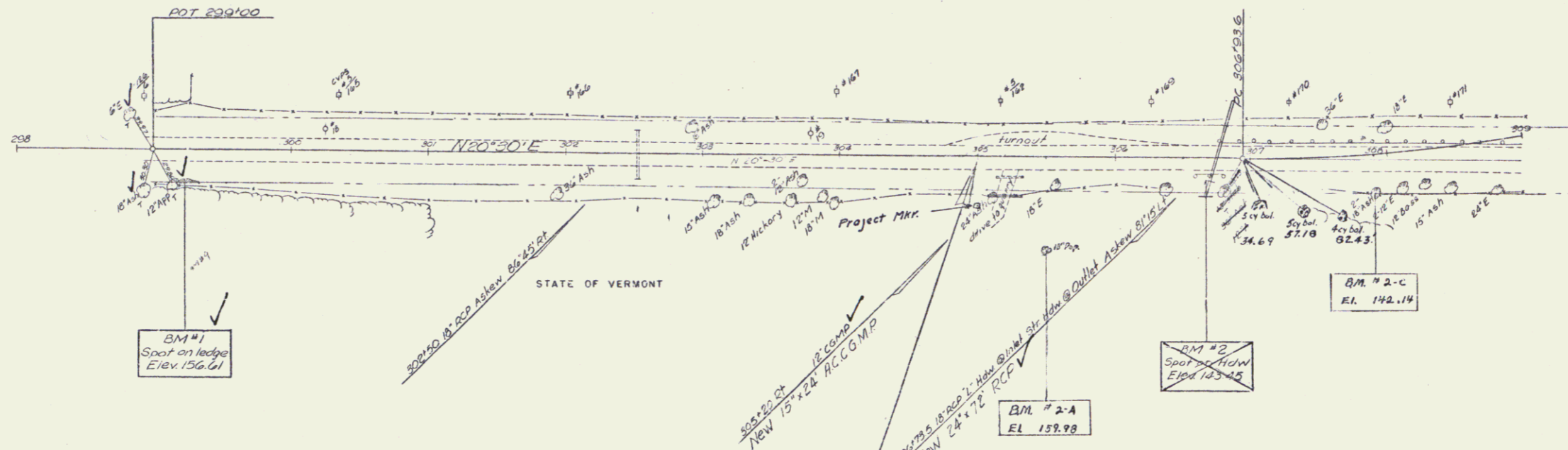
APPROVED <i>G.M. Lane</i> HIGHWAY ENGINEER DATE Nov 6, 1958	APPROVED <i>H. J. Lester</i> CONSTRUCTION ENGINEER DATE Nov 14, 1958	APPROVED <i>A. D. Smith</i> BRIDGE ENGINEER DATE NOV 12, 1958	APPROVED <i>E. H. Steinhilber</i> DISTRICT ENGINEER DATE 10/24/58	APPROVED <i>B. M. O'Connell</i> SUPERVISOR DATE 10/25/58	APPROVED <i>H. E. Sargent</i> CHIEF ENGINEER DATE NOV 6, 1958
---	--	---	---	--	---

Removal & Disposal of Present Guard Rail
 306+60 to 306+82 Rt. 21'
 306+78 to 308+60 Lt. 182'
 308+60 to 309+00 Rt. 40'

Three Cable Guard Rail
 with Steel Posts 11mm 343
 5 ft. Anchors
 306+35-309+00 Lt. ✓

Construct Drive
 305+20 Rt. ✓

STATE OF VERMONT



BM #1 Spot on ledge 17' Rt Sta 299+22 Elev. 152.01
 BM #2 Spot on Conc Hdwr 17' Rt Sta 306+67 Elev. 143.45

BM #2-A S.I.E. 18" Pop. 10 Rt. Sta 305+50 El. 152.90
 BM #2-C S.I.E. 36" Bul. Mt. 30 Rt. Sta. 307+90 El. 142.17

MILTON-SOUTH HERO
 SAND BAR BRIDGE
 Proj. F-028-1(1)
 Sheet 2 of 10

JUL - 8 1974 2

Removal & Disposal of Present
 Guard Rail Item 550
 306+00 - 306+82 Rt
 306+78 - 303+60 Lt
 306+60 - 312+85 Rt
 312+60 - 312+85 Rt

Construct Approaches
 316+50 Rt
 319+50 Rt

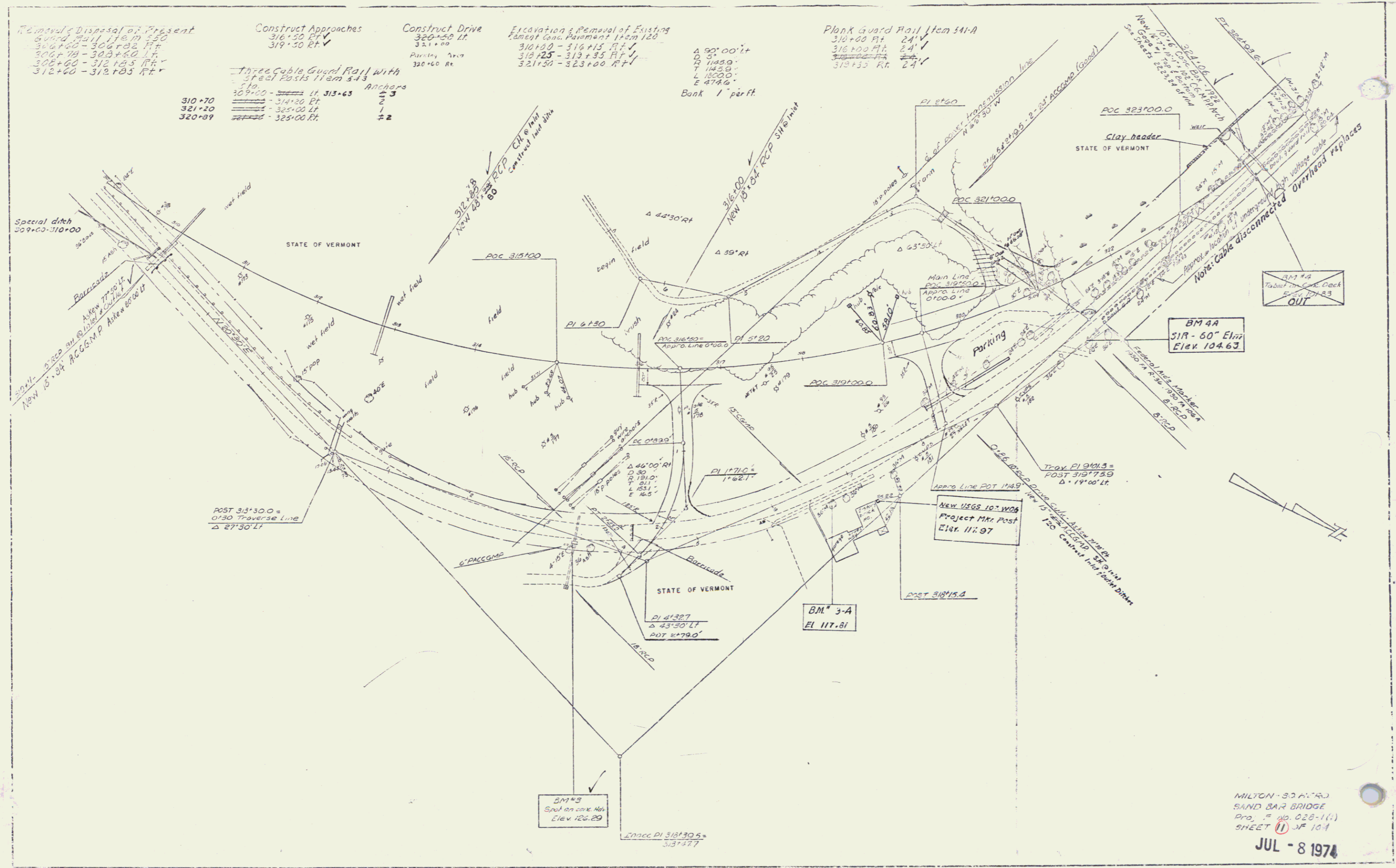
Construct Drive
 320+50 Lt
 321+00
 Parking Area
 320+60 Rt

Excavation & Removal of Existing
 Cement Concrete Pavement 1+5m 122
 310+00 - 316+15 Rt
 318+25 - 319+35 Rt
 321+50 - 323+00 Rt

Plank Guard Rail Item 541-A
 310+00 Rt 24'
 316+00 Rt 24'
 319+35 Rt 24'

Three Cable Guard Rail with
 Steel Posts Item 543
 310+70
 321+20
 320+89

Bank 1' per ft
 Δ 90° 00' Lt
 D 5'
 T 1145.0'
 L 1800.0'
 E 474.6'



MILTON - S.D.A.R.J.
 SAND BAR BRIDGE
 Proj. No. 028-1(1)
 SHEET 1 OF 104
 JUL - 8 1974

3

Removal & Disposal of Present
Guard Rail 1 1/2 m 550
306+60 - 306+82 RT
306+70 - 308+60 LF
308+60 - 312+85 RT
312+60 - 312+85 RT

Construct Approaches
316+50 RT
319+30 RT

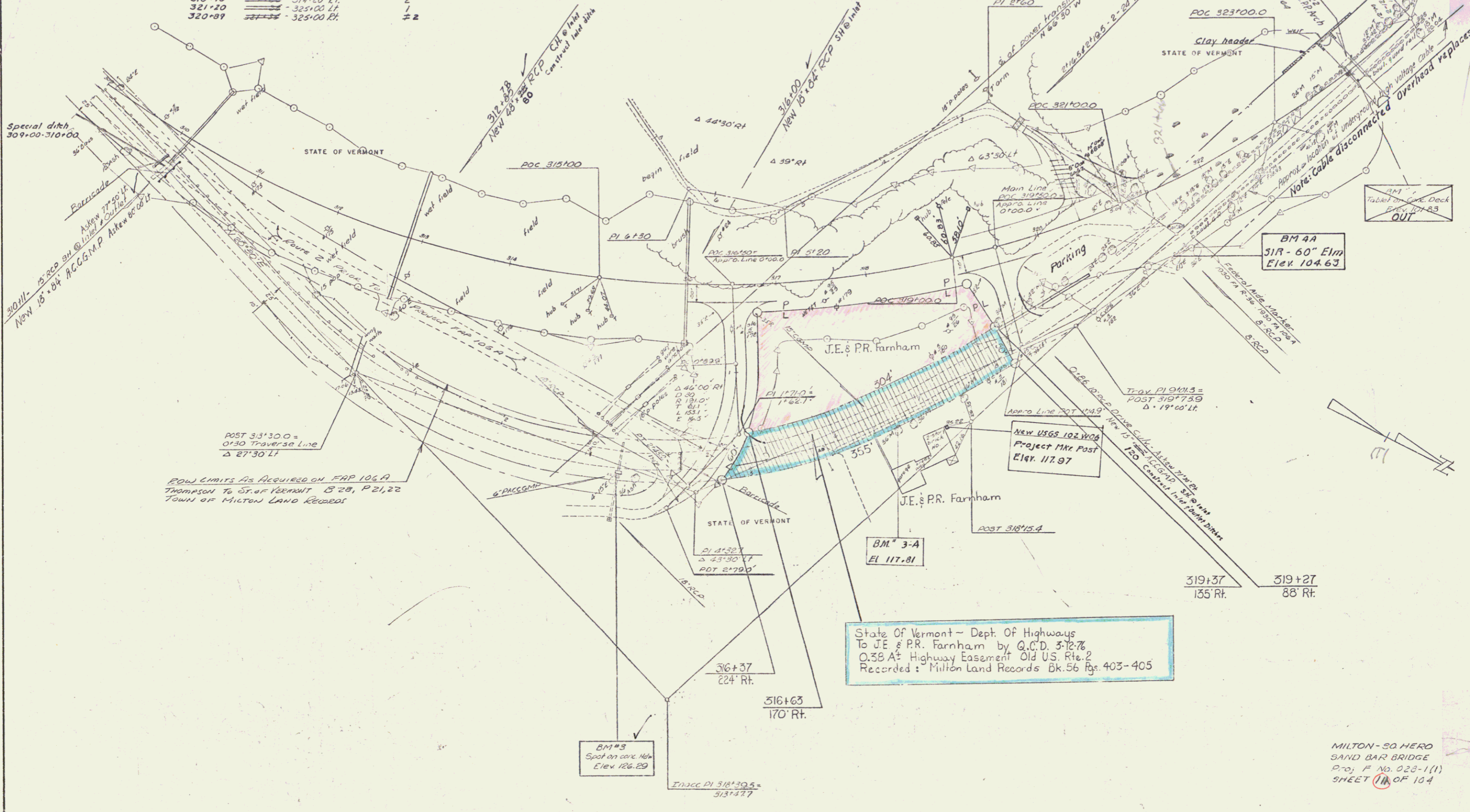
Construct Drive
320+50 LF
321+00
320+60 RT

Excavation & Removal of Existing
Concrete Pavement Item 120
310+00 - 316+15 RT
310+25 - 313+35 RT
321+50 - 323+00 RT

Bank 1' per ft
A 90° 00' LT
D 5'
R 1145.0'
L 1820.0'
E 474.6'

Plank Guard Rail Item 341-A
310+00 RT 24'
316+00 RT 24'
319+35 RT 24'

Three Cable Guard Rail with
Steel Posts Item 343
310+70
321+20
320+89



POW LIMITS AS ACQUIRED ON MAP 106A
THOMPSON TO ST. OF VERMONT B 20, P 21, 22
TOWN OF MILTON LAND RECORDS

State of Vermont - Dept. Of Highways
To J.E. & P.R. Farnham by Q.C.D. 3-12-76
0.38 A Highway Easement Old US. Rte. 2
Recorded in Milton Land Records Bk. 56 Pgs. 403-405

MILTON - SO HERO
SAND BAR BRIDGE
Proj. F No. 023-1(1)
SHEET 11A OF 104

POOR ORIGINAL COPY

GRANTEE J.E. & P.R. FARNHAM
GRANTOR ST. OF VT. DEPT. OF FISH & GAME
RECORDED BK. 35, PG. 579 MAY 1, 1962
M.P. 0224

J.E. & P.R. FARNHAM



OLD U.S. 2

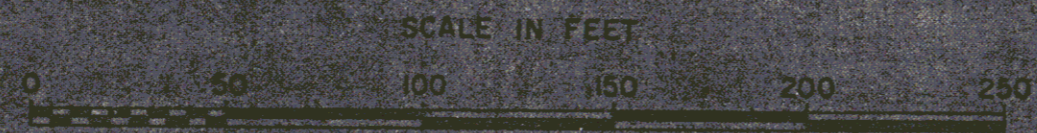
J.E. & P.R. FARNHAM

U.S. ROUTE 2

FOX HILL

TO S. HERO

TO COLCHESTER



STATE OF VERMONT
DEPT. OF HIGHWAYS

Plot for Quit Claim Jeopard from Hwy Dept. to J.E. & P.R. Farnham

TOWN OF MILTON

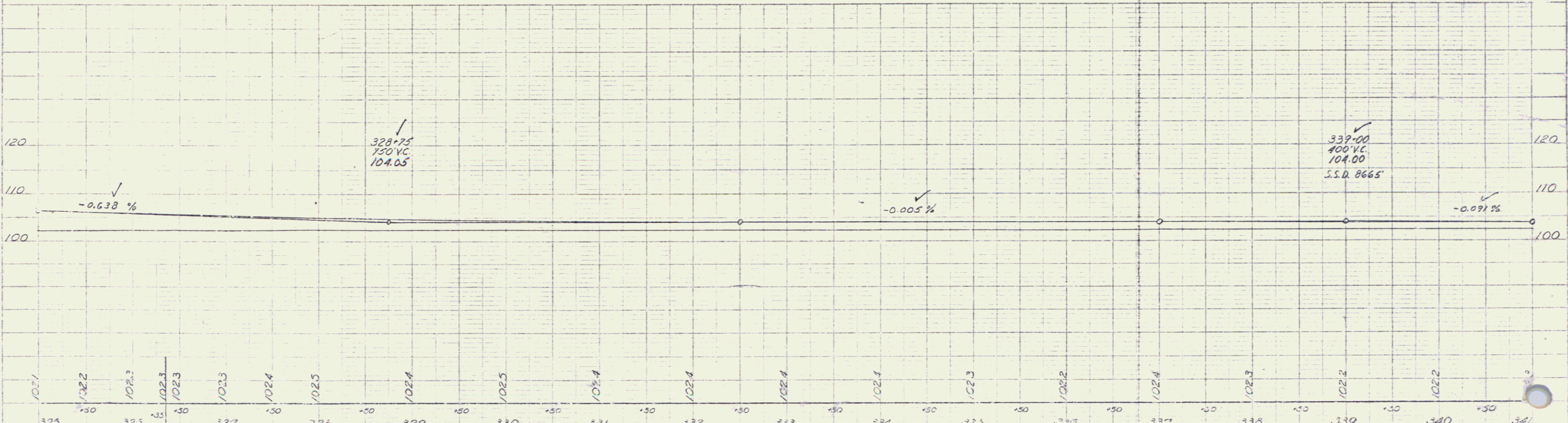
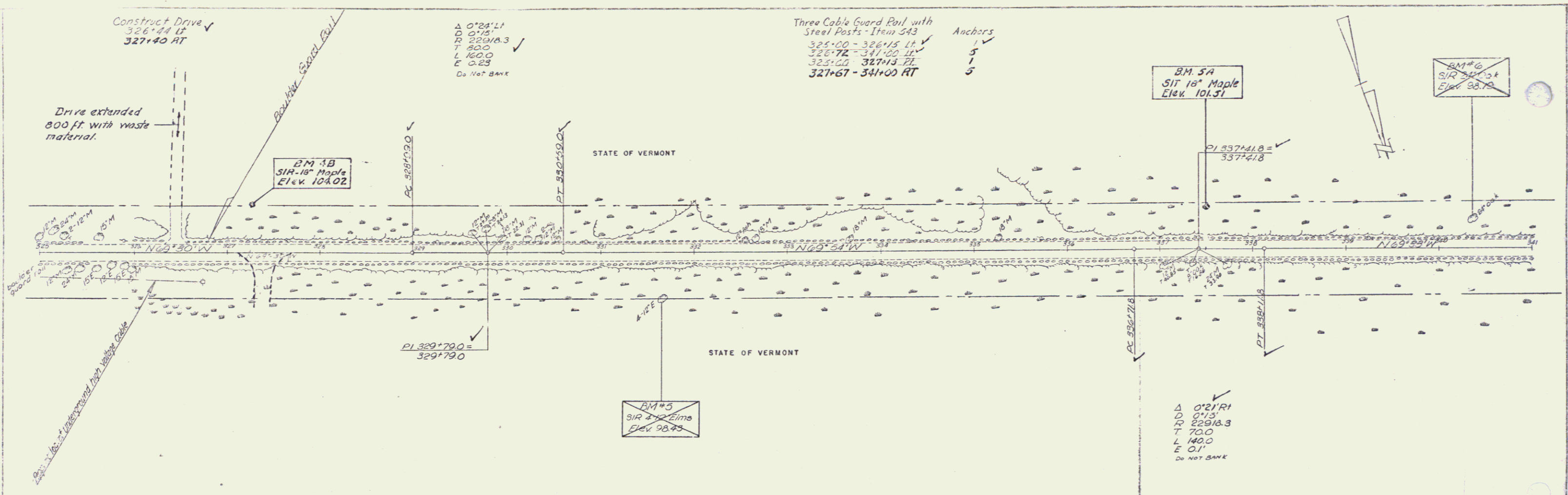
0.38 A² Hwy Easement Old U.S. Route 2

PROJECT Milton - So. Hero - F. 028 - 110

APPROX. SCALE 1" = 50' DATE 1/15/76 DRAWN BY J.D.P.



5



BM #5 - SIR 18" Elm 50' Lt. 7" Elev. 98.25
 BM #6 - SIR 18" Maple 45' Lt. 1" Elev. 98.75
 BM #3B - SIR 18" Maple 50' Lt. 7" Elev. 104.02
 BM #5A - SIR 18" Maple 45' Lt. 1" Elev. 101.51

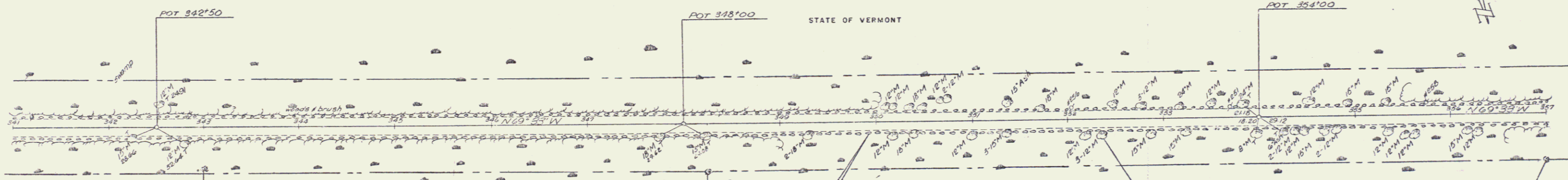
MILTON - SOUTH HERO
SAND BAR BRIDGE
Proj. No. 029-1(1)

JUL - 8 1974

6

Three Cable Guard Rail with
Steel Posts - Item 543

Station	Item	Anchors
341+00 - 343+00	LT	1
343+36 - 347+00	LT	5
347+00 - 349+43	RT	3
349+75 - 349+00	RT	3

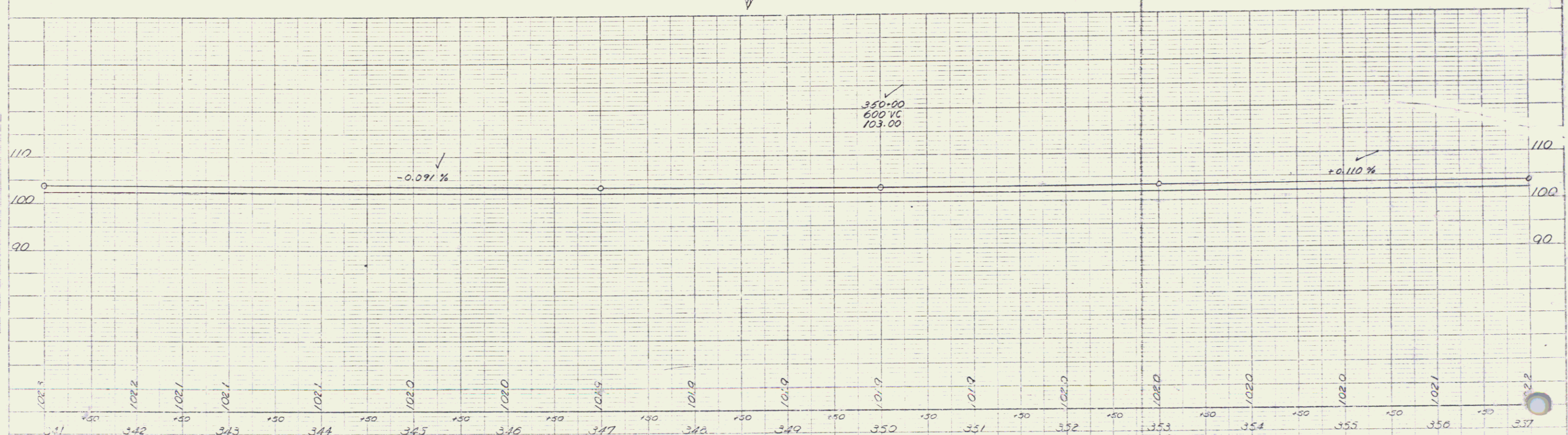


BM 6A
SIT 14" ELM
Elev. 102.00

BM 7A
SIT 20" Maple
Elev. 102.99

BM 7
SIT 20" Maple
Elev. 103.00

BM 8A
SIT 20" OAK
Elev. 103.82

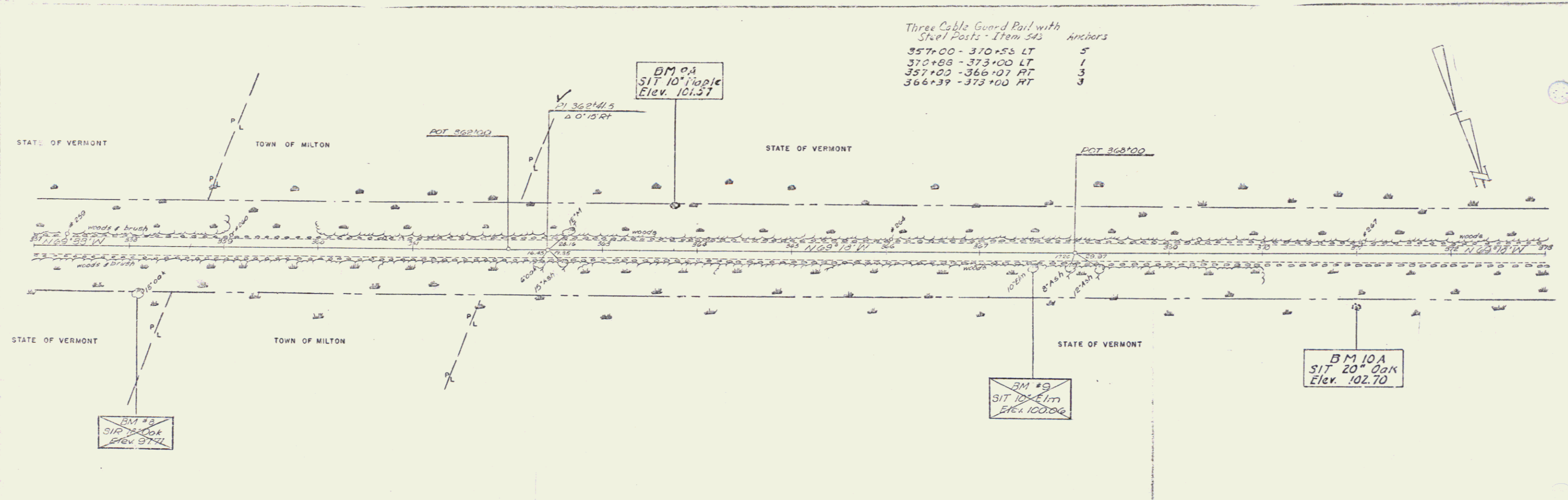


BM 6A SIT 14" ELM 45' RT Sta. 343+00 Elev. 102.00
 BM 7A SIT 20" Maple 50' RT Sta. 348+25 Elev. 102.99
 BM 8A SIT 20" Oak 30' RT Sta. 354+00 Elev. 103.82

MILTON - 80 HERO
SAND BAR BRIDGE
Pr-2 E. No. 028-1(1)
Sheet 6 of 104

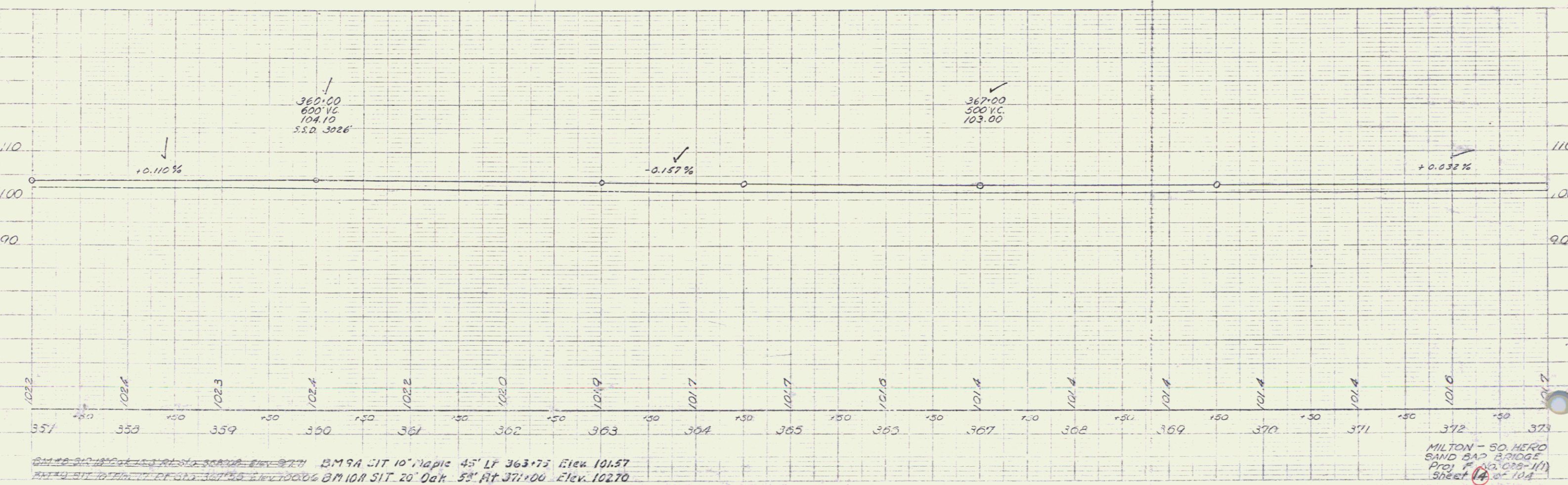
JUL '8 1974 7

Project: F. No. 1111
 Date: 8-57
 Scale: 1" = 40'
 Drawing No.: 102-104-1(1)
 Sheet 6 of 104



Three Cable Guard Rail with
Steel Posts - Item 543

Station	Item	Quantity
357+00 - 370+55	LT	5
370+55 - 373+00	LT	1
357+00 - 366+07	RT	3
366+39 - 373+00	RT	3



MILTON - SO HERO
SAND BAR BRIDGE
Proj # 80-089-111
Sheet 104

JUL - 8 1974

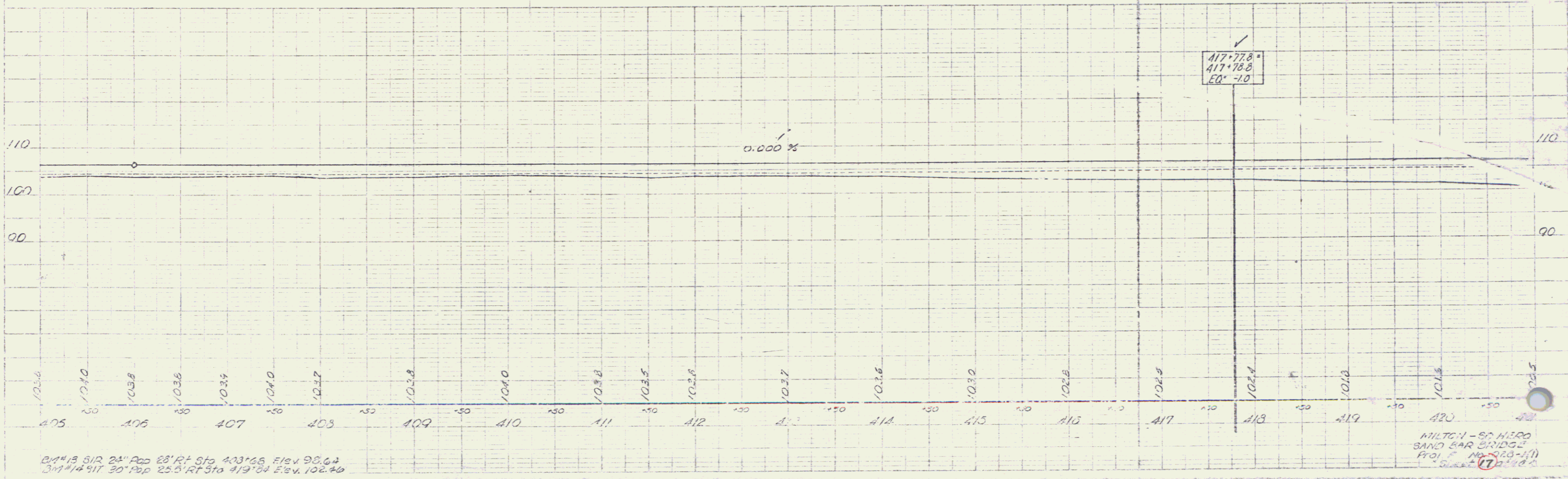
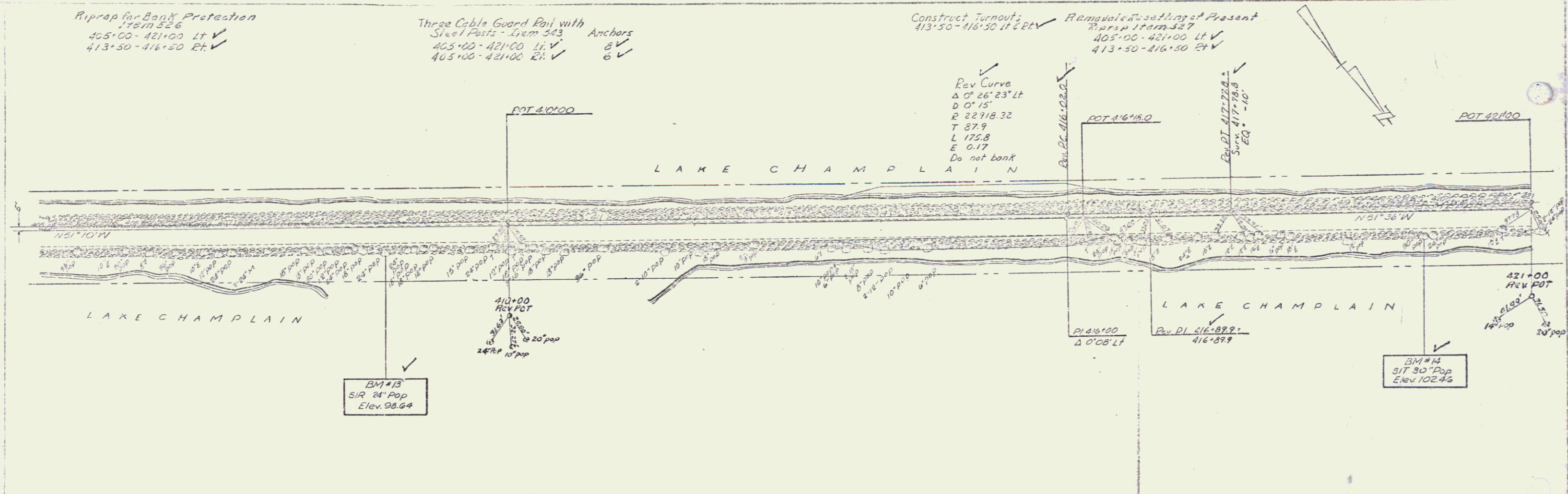
Riprap for Bank Protection
Item 526
405+00 - 421+00 Lt ✓
413+50 - 416+50 Rt ✓

Three Cable Guard Rail with
Steel Posts - Item 343 Anchors
405+00 - 421+00 Lt ✓ 8 ✓
405+00 - 421+00 Rt ✓ 6 ✓

Construct Turnout;
413+50 - 416+50 Lt & Rt ✓

Remove & Re-setting of Present
Riprap Item 327
405+00 - 421+00 Lt ✓
413+50 - 416+50 Rt ✓

Rev Curve
Δ 0° 26' 23" Lt
D 0' 15"
R 22918.32
T 87.9
L 175.8
E 0.17
Do not bank



BM #13 SIR 24" Pop 28' Rt S/O 403+66 Elev 98.64
BM #14 SIR 30" Pop 25' Rt S/O 419+74 Elev 102.40

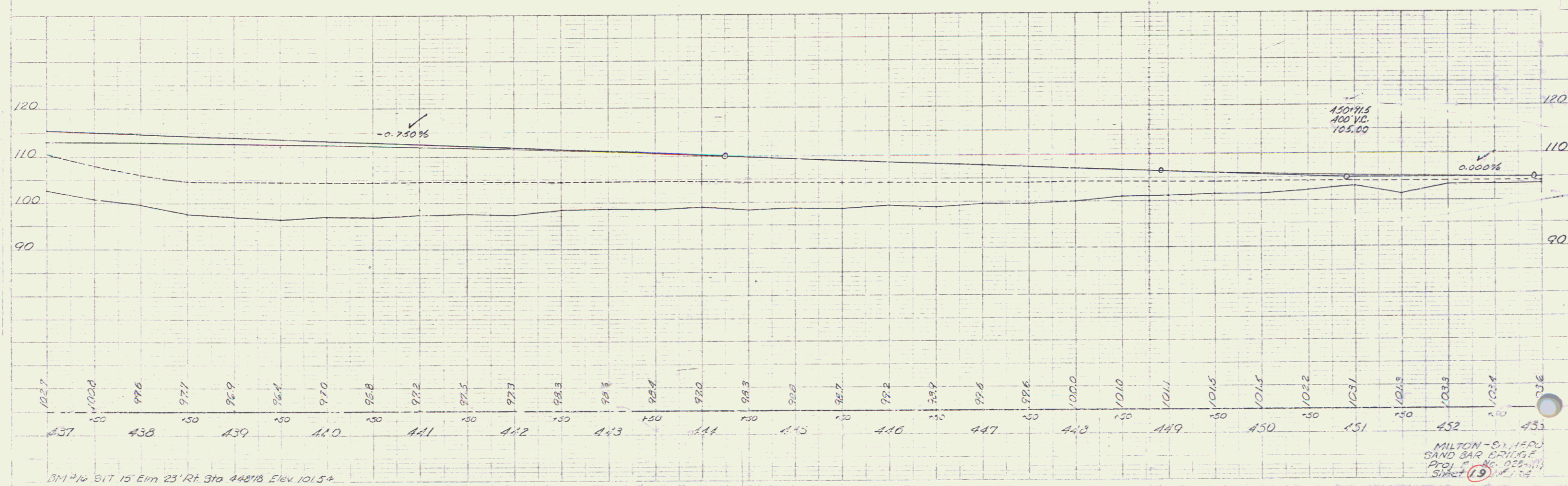
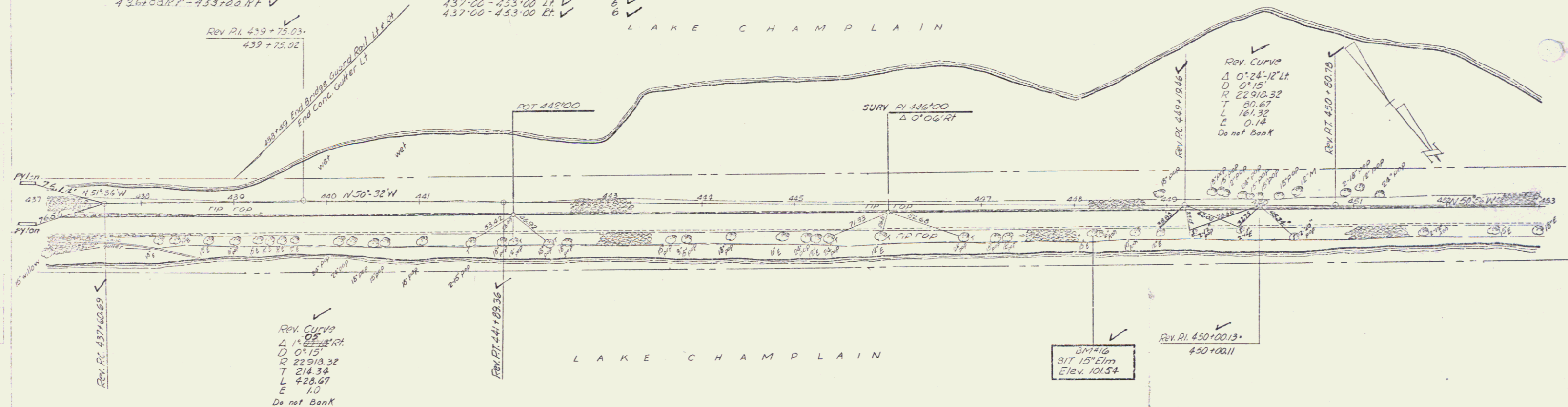
MILTON - SAND HERR
SAND BAR BRIDGE
PROJ. NO. 920-1(1)
Sheet 17 of 20

JUL 8 1974

Pilecap for Bank Protection
 120' 5.26
 436+89.17 - 453+00 Lt ✓
 436+89.17 - 453+00 Rt ✓

Three Cable Guard Rail with
 Steel Posts Item 543 Anchors
 437+00 - 453+00 Lt ✓ 6 ✓
 437+00 - 453+00 Rt ✓ 6 ✓

LAKE CHAMPLAIN



MILTON - SAND BAR BRIDGE
 PROJ. NO. 028-111
 SHEET 13

JUL - 8 1974

13

Three Cable Guard Rail with Steel Posts, Item 543

453+00 - 453+70 LT	1
453+70 - 458+32 RT	3
458+32 - 462+28 RT	2
462+28 - 468+72 RT	2
468+72 - 471+59 RT	2

Construct Drives

459+13 LT	✓
461+85 LT	✓
462+40 RT	✓
462+65 LT	✓
463+65 LT	✓
467+95 LT	✓
468+95 LT	✓
468+20 LT	✓

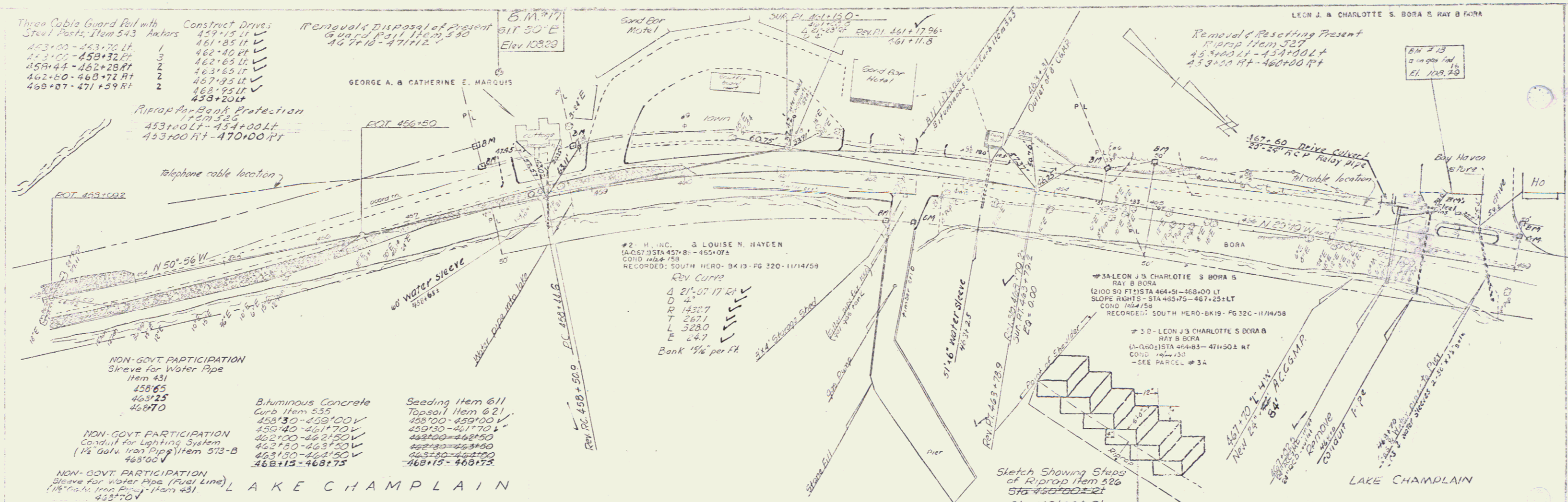
Removal & Disposal of Present Guard Rail, Item 540

467+16 - 471+12	✓
-----------------	---

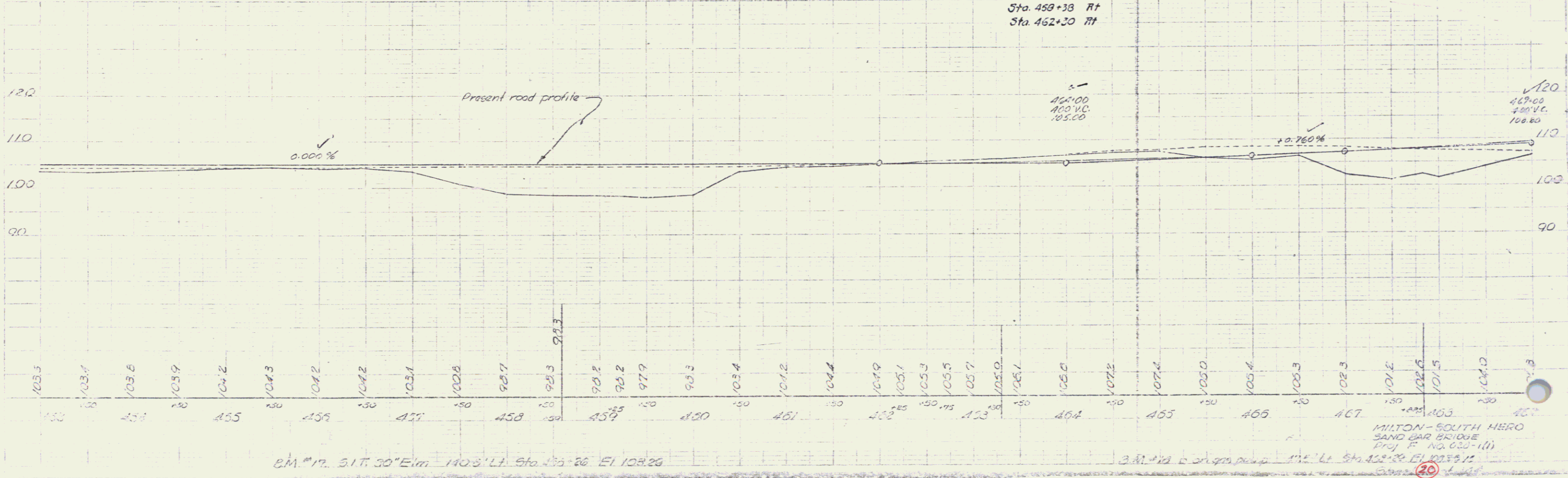
Riprap for Bank Protection

453+00 LT - 454+00 LT	✓
453+00 RT - 470+00 RT	✓

8/5/77
 S. Cummings 9/2/77
 17



- NON-GOVT PARTICIPATION
Sleeve for Water Pipe
Item 431
458+65
463+25
468+70
- NON-GOVT PARTICIPATION
Conduit for Lighting System
(1/2 Galv. Iron Pipe) Item 573-B
468+00
- NON-GOVT PARTICIPATION
Sleeve for Water Pipe (PVC Line)
(1/2 Galv. Iron Pipe) Item 431
458+70
- Bituminous Concrete
Curb, Item 455
458+30 - 459+00 V
459+00 - 461+70 V
462+00 - 462+50 V
462+50 - 463+50 V
463+50 - 464+00 V
464+00 - 468+75
- Seeding Item 611
Topsoil Item 621
458+00 - 459+00 V
459+30 - 461+70 V
462+00 - 463+50 V
463+50 - 464+00 V
464+00 - 468+75



B.M. #17, S.I.T. 30° E, 140.8' LT, Sta. 453+26, El. 108.26

B.M. #12, S.I.T. 30° E, 112' LT, Sta. 452+30, El. 108.12

MILTON - SOUTH HERO
SAND BAR BRIDGE
Proj. P. NO. 035-1(1)

JUL - 8 1974 14

PLAN
 DATE: 10/24/58
 DRAWN BY: S. Cummings
 CHECKED BY: S. Cummings
 PROJECT: 8157

Three Cable Guard Rail with
 Steel Posts, Item 543 Anchors
 469+00 - 471+59.4 ft

Construct Drives
 470+75 Lt ✓
 471+50 Rt ✓

Riprap for Bank Protection
 Item 526
 463+00 Rt - 470+00 Rt

Demolition and Removal
 of Building Item 386
 470+25 Rt

#3C- LEON J & CHARLOTTE S BORA &
 RAY B BORA
 (A-05) STA 469+00-479+00± LT
 SLOPE RIGHTS - STA 471+70-475+00± LT
 COND 1/12/58
 - SEE PARCEL #3A

Sleeve for Water Pipe
 Item 431
 470+32

LEON J. & CHARLOTTE S. BORA
 RAY B. BORA

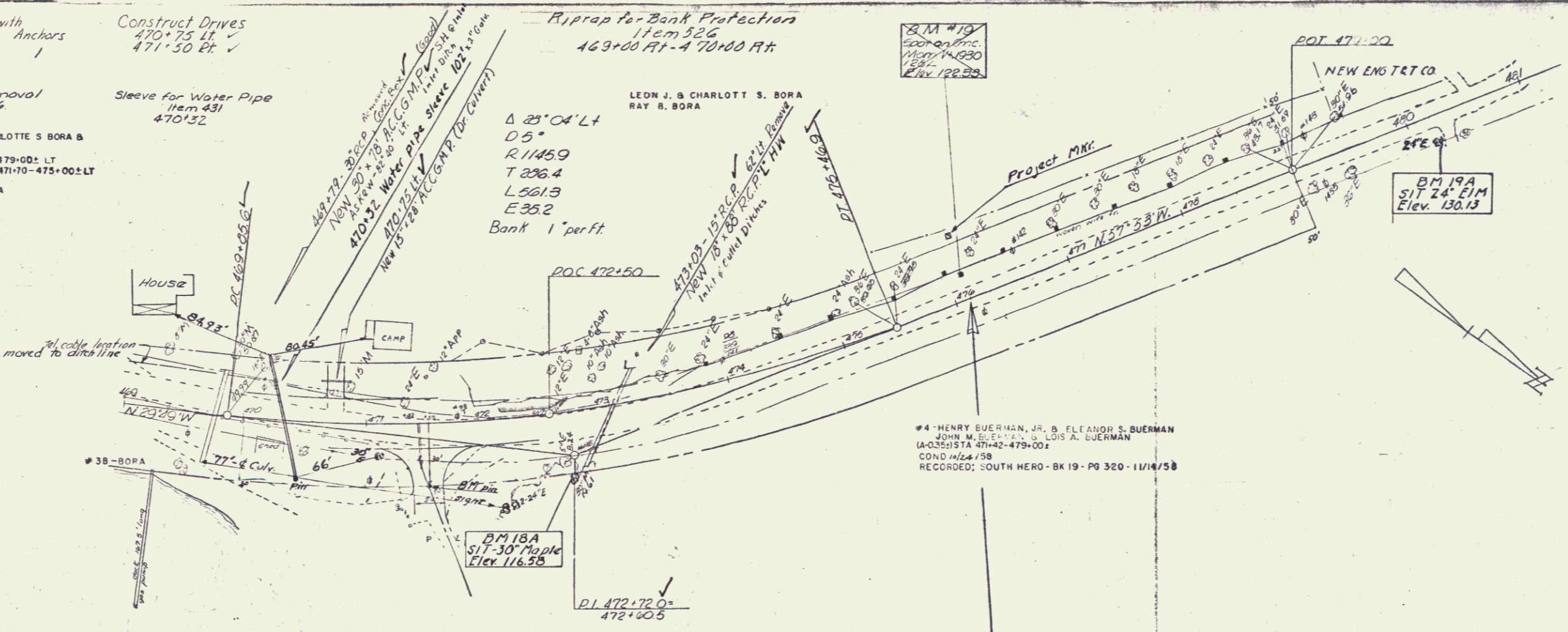
$\Delta 25^{\circ} 04' Lt$
 05°
 $R 11459$
 $T 226.4$
 $L 561.3$
 $E 35.2$
 Bank 1' per ft.

BM #19
 500' on Etc.
 11/14/230
 122.89

POT 471+00

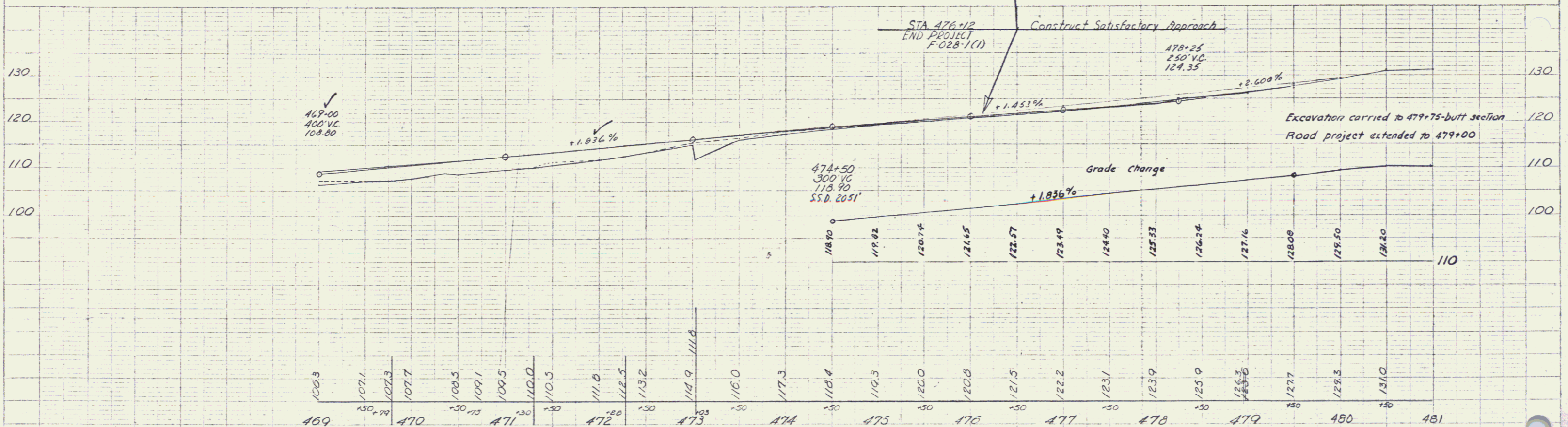
NEW ENG T & CO

BM 19A
 SIT 24' Elm
 Elev. 130.13



#4- HENRY BUERMAN, JR. & ELEANOR S. BUERMAN
 JOHN M. BUERMAN & LOIS A. BUERMAN
 (A-05) STA 474+00-479+00±
 COND 1/24/58
 RECORDED: SOUTH HERO - BK 19 - PG 320 - 11/14/58

P.O.C. 472+50
 472+00



BM 18A SIT 30' Maple 50' Rt 472+60 Elev. 116.58
 BM 19A SIT 24' Elm 20' Rt 480+20 Elev. 130.13

BM #19 500' on Etc. 11/14/230 STA 476+10 21' Lt Elev. 122.89

MILTON - SOUTH HERO
 SAND BAR BRIDGE
 Proj. F. No. 023-1(1)
 Sheet 21 of 104