

Three Cable Guard Rail with Steel Posts, Item 543

453+00 - 453+70 LT	1
453+70 - 458+32 RT	3
458+32 - 462+28 RT	2
462+28 - 468+72 RT	2
468+72 - 471+59 RT	2

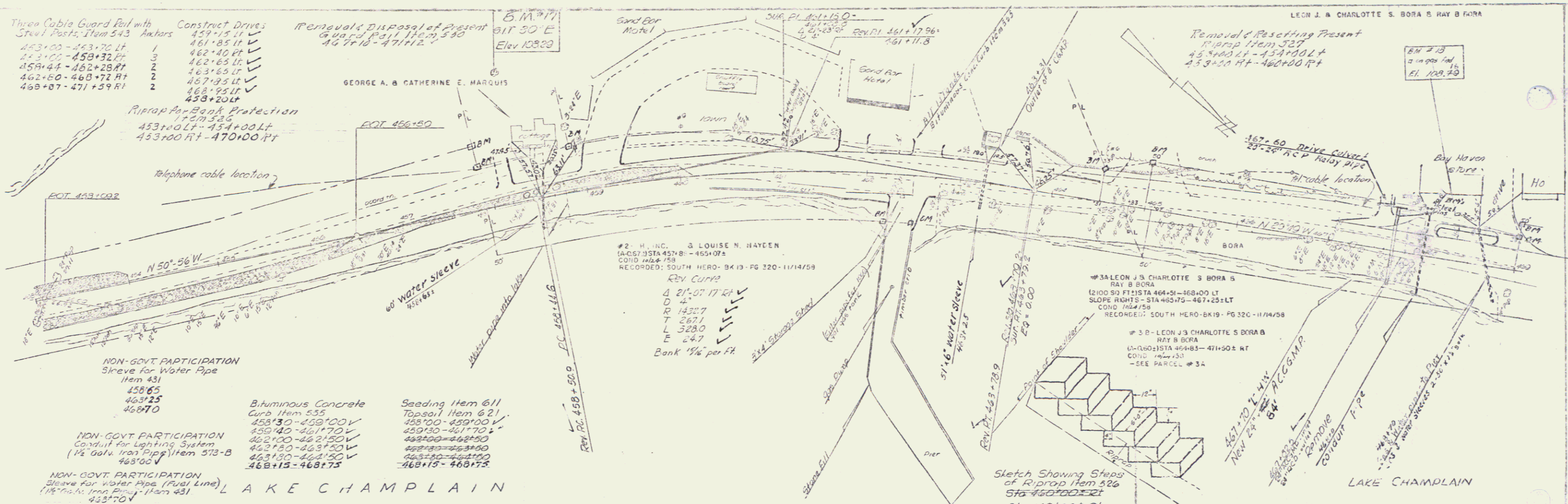
Construct Drives

459+13 LT	✓
461+85 LT	✓
462+40 RT	✓
462+65 LT	✓
463+65 LT	✓
467+95 LT	✓
468+95 LT	✓
468+20 LT	✓

Removal & Disposal of Present Guard Rail, Item 540
467+16 - 471+12 ✓

Riprap for Bank Protection
453+00 LT - 454+00 LT
453+00 RT - 470+00 RT

8/5/77
 S. Cummings 9/2/77
 17

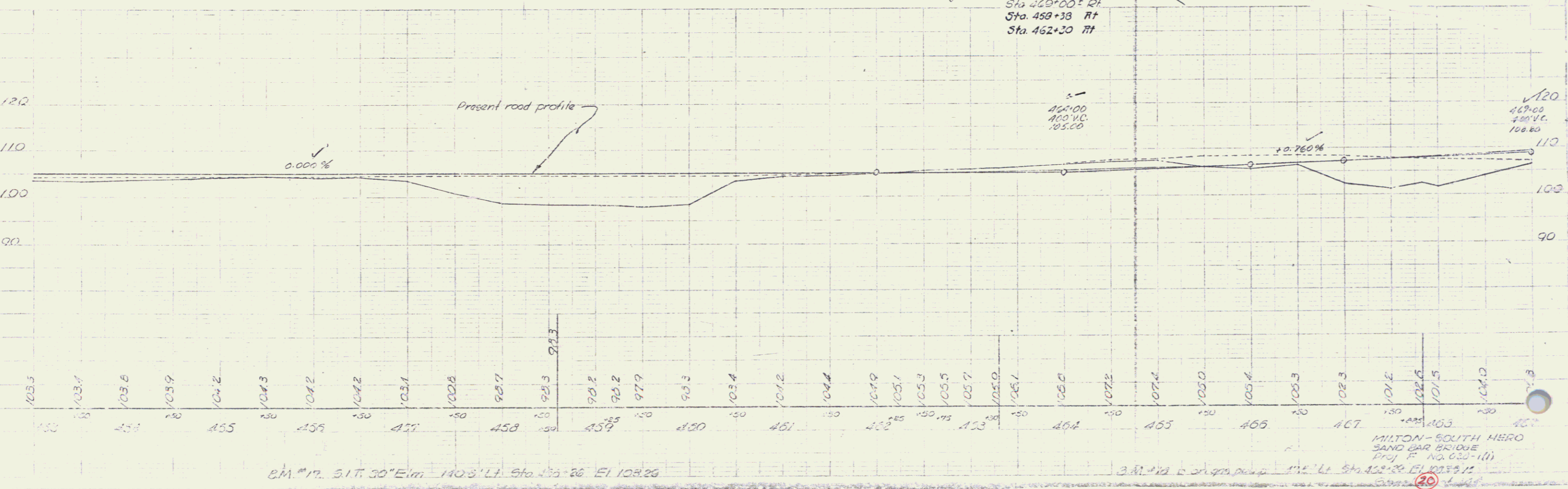


NON-GOVT PARTICIPATION
Sleeve for Water Pipe
Item 431
458+65
463+25
468+70

NON-GOVT PARTICIPATION
Conduit for Lighting System
(1/2 Galv. Iron Pipe) Item 573-B
468+00

Bituminous Concrete
Curb, Item 455
458+30 - 459+00 V
459+00 - 461+70 V
462+00 - 462+50 V
462+50 - 463+50 V
463+50 - 464+00 V
464+00 - 468+75

Seeding Item 611
Topsoil Item 621
458+00 - 459+00 V
459+30 - 461+70 V
462+00 - 463+50 V
463+50 - 464+00 V
464+00 - 468+75



B.M. #17, S.I.T. 30° E, 140.8' LT, Sta. 453+26, El. 108.26

B.M. #18, S.I.T. 30° E, 112.1' LT, Sta. 462+30, El. 108.26

MILTON - SOUTH HERO
SAND BAR BRIDGE
Proj. P. NO. 035-1(1)
JUL - 8 1974 14