

SHEET NO.

1.	Title Page	
2-3.	Typical Sheets of Improvement, 3" Bit. Conc. Pavt., Mod.	
4-5.	Summary-Items	
6-7.	Item Detail and Drainage Sheet	
8-11.	Grades & Easements	
12-20.	P.O.W. Detail Sheets	
21-30.	Plan & Profile Sheets	
31.	AsD Drilling Blasting of Solid Rock	1/17/69 R
32.	Sinking Tables	7/17/67 R
33.	2-5 Typical Slope Grading	3/10/65
34.	3-6 Muck Excavation	3/10/65
35.	8-10 Embankment on a Slope	3/10/65
36.	2-11 Slope Stabilization	3/10/65
37.	C-1 Curbs & Bit. Conc. Sidewalk	10/23/68 R
38.	C-1a Precast Reinf. Cement Conc. Curb	3/10/65
39.	C-2a Granite Curb Drive Entrance	3/10/65
40.	D-2 Cement Rubble Masonry, Underdrain	4/18/69 R
41.	D-3 Jute Matting, Gutters	7/13/67 R
42.	D-4 Underdrain Flushing Basin	12/2/68 R
43.	D-6 Reinf. Conc. Drop Inlet in Branches	12/23/68
44.	D-8 Reinf. Conc. Drop Inlets	3/10/65
45.	D-9 Drop Inlet Tops	3/10/65
46.	D-10 Drop Inlet Tops	3/10/65
47.	D-11 Drop Inlet Tops	3/10/65
48.	D-16 Precast Drop Inlets	7/18/67 R
49.	E-31 Fed. Aid Const. Identification Sign	8/21/67 R
50.	E-32 Road Const. Approach Sign	1/1/67
51.	E-33 On-Project Construction Sign	5/13/67 R
52.	G-4 Marker Posts, Plank Guardrail	12/30/65 R
53.	G-6 Three Cable Gr/W/Lt. Steel Posts	3/21/68 R
54.	G-1 Project and Boundary Markers	3/10/65
55-60.	Blank	
61-64.	Mainline Cross Sections	
65.	60±50 Lt. Approach X-Secs.	
66.	52±48 Lt. Approach X-Secs.	
67-69.	52±48 Lt. Approach X-Secs.	

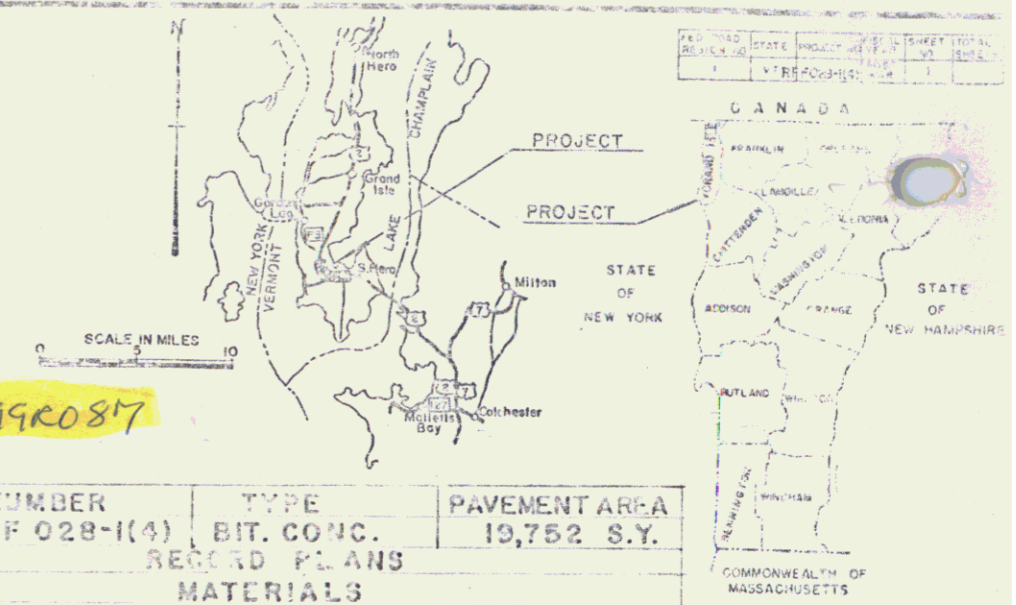
STATE OF VERMONT
DEPARTMENT OF HIGHWAYS

PROPOSED IMPROVEMENT

FEDERAL AID PROJECT

TOWN OF SOUTH HERO
COUNTY OF GRAND ISLE
U.S. ROUTE 2
BURLINGTON-ALBURG ROAD

Pin # 99R087



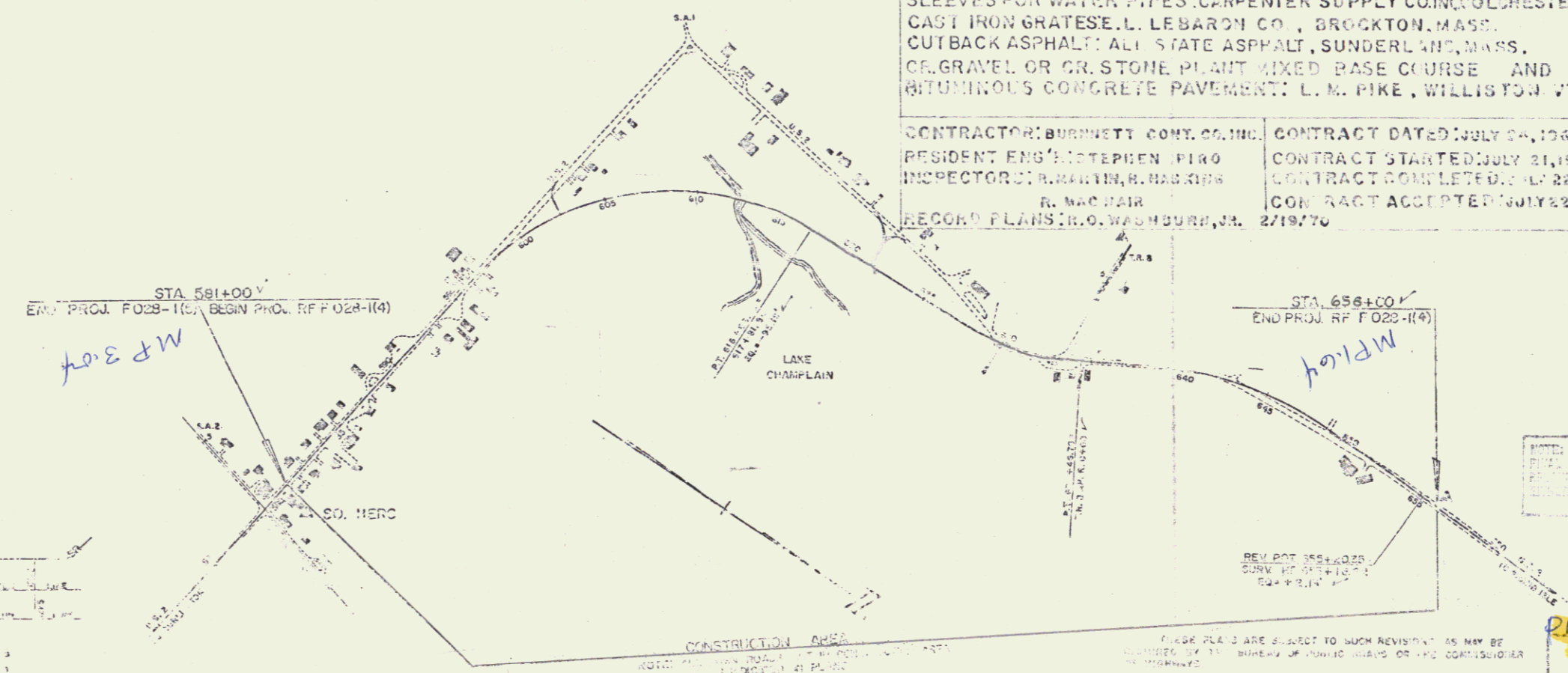
(To Be Returned to R.O.W. Division)
Town of South Hero
PERMIT
FROM FILE
RIGHT-OF-WAY DIVISION

BEGINNING AT A POINT 2.742 MILES WESTERLY OF THE MILTON-SO HERO TOWN LINE AT THE SO CALLED 'SAND BAR BRIDGE' AND EXTENDING WESTERLY AND NORTHERLY 1.403 MILES

LENGTH OF PROJECT 7,406.95 FEET=1.403 MILES

ADT 1968	2520-2720
ADT 1988	3910-4250
DHV 1988	590-540
D	60%
T	5%
V	50 MPH

PROJECT NAME & NUMBER	TYPE	PAVEMENT AREA
SOUTH HERO RFF-028-1(4)	BIT. CONC.	19,752 S.Y.
RECORD PLANS		
MATERIALS		
SUB-BASE OF SAND: MC DONALD PIT, MILTON, VT.		
SUB-BASE OF CRUSHED GRAVEL: LESSOR QUARRY,		
SUB-BASE OF CRUSHED ROCK: SOUTH HERO, VT.		
R.C.M. & CEMENT: S.T. GRISWOLD,		
CABLE FOR GUARD RAIL: WILLISTON, VT.		
C.A.A.C.B., C.G.M.R., A.C.C.G.M.P. & R.C.G.M.P.: NORTHEASTERN CULVERT CORP., WESTMINSTER, VT.		
REINFORCING STEEL: V.T. STRUCTURAL STEEL CO., BURLINGTON, VT.		
VITRIFIED CLAY PIPE: R. BINSON CLAY PRODUCTS, ALBANY, VT.		
SLEEVES FOR WATER PIPES: CARPENTER SUPPLY CO. INC. COLCHESTER, VT.		
CAST IRON GRATES: L.L. LEBARON CO., BROCKTON, MASS.		
CUTBACK ASPHALT: ALL STATE ASPHALT, SUNDERLAND, MASS.		
CR. GRAVEL OR CR. STONE PLANT MIXED BASE COURSE AND BITUMINOUS CONCRETE PAVEMENT: L.M. PIKE, WILLISTON, VT.		
CONTRACTOR: BURNETT CONY. CO. INC.		CONTRACT DATED: JULY 24, 1968
RESIDENT ENG: STEPHEN PIRO		CONTRACT STARTED: JULY 21, 1968
INSPECTOR: R. MARTIN, R. HASBINS		CONTRACT COMPLETED: 12/22, 1968
R. MAC NAIR		CONTRACT ACCEPTED: JULY 22, 1968
RECORD PLANS: R.O. WASHBURN, JR.		2/19/70



ADT 1968	2520-2720
ADT 1988	3910-4250
DHV 1988	590-540
D	60%
T	5%
V	50 MPH

CONTRACTOR: BURNETT CONY. CO. INC.
RESIDENT ENGINEER: STEPHEN PIRO
INSPECTOR: R. MARTIN, R. HASBINS
R. MAC NAIR
RECORD PLANS: R.O. WASHBURN, JR.

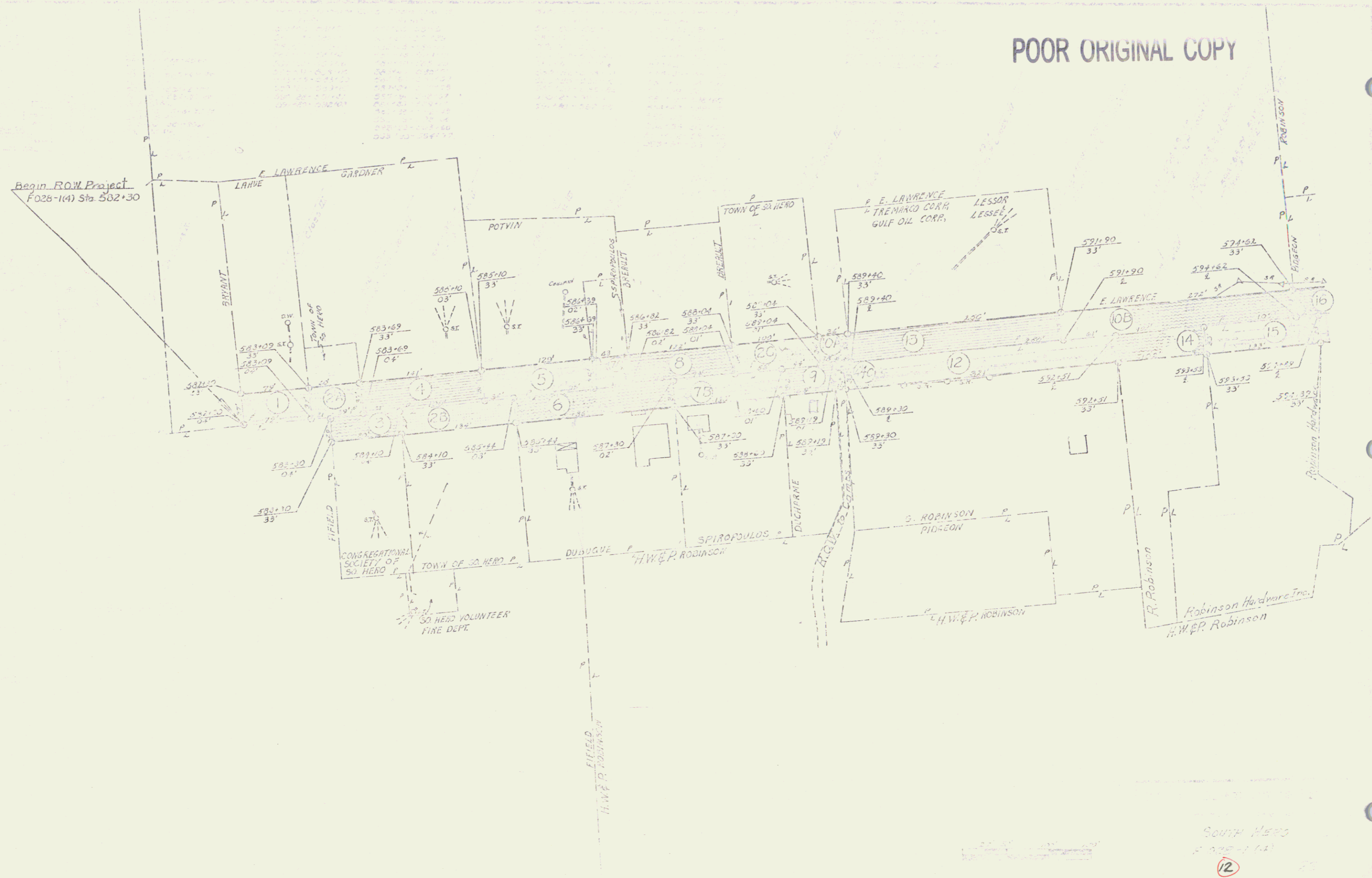
POOR ORIGINAL COPY

PROJECT NO. RFF-028-1(4)
JUL - 8 1974

2.6/66

POOR ORIGINAL COPY

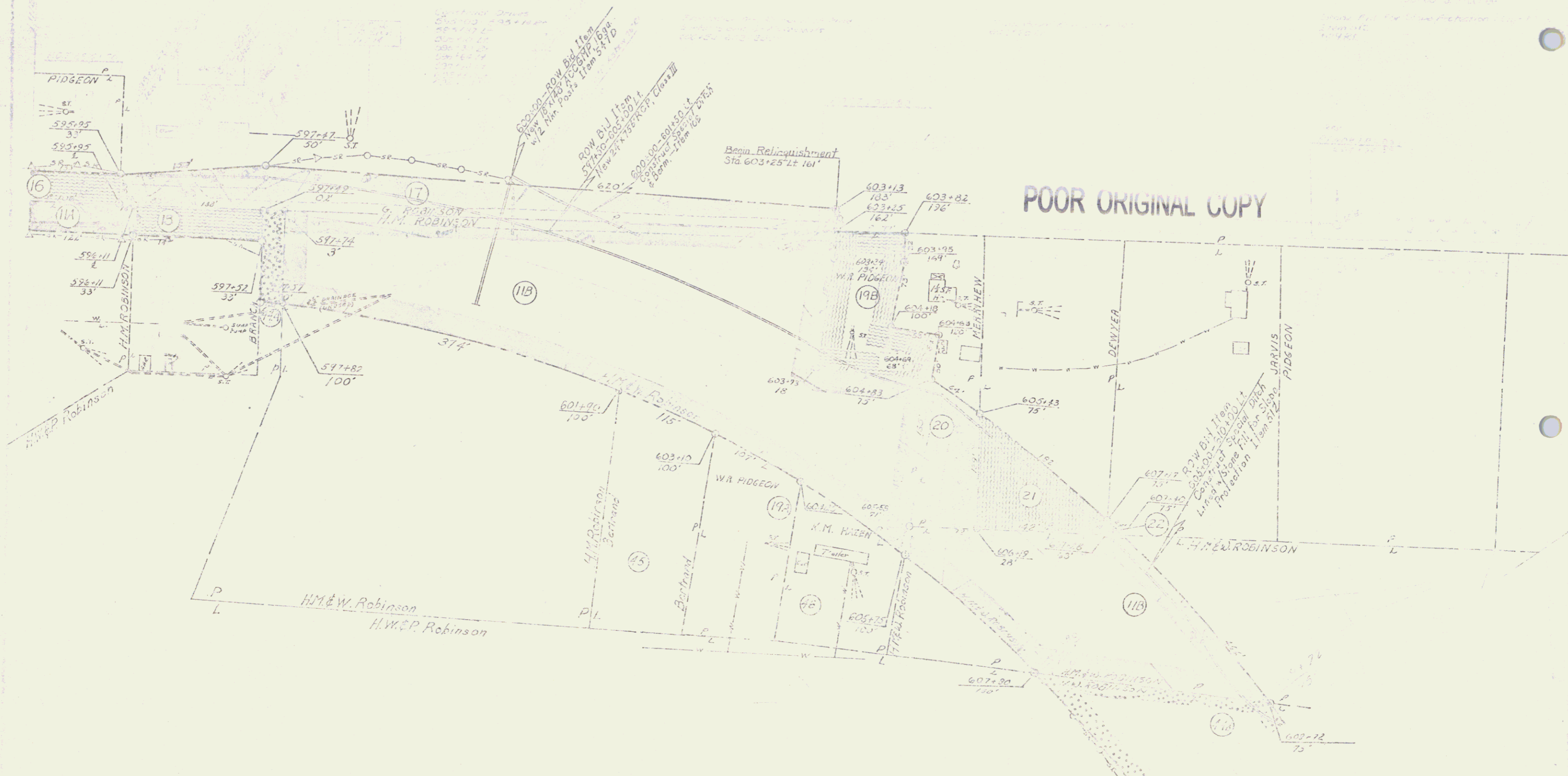
Begin ROW Project
F026-1(4) Sta. 502+30



SOUTH HERO
F 026-1 (4)

12

2



POOR ORIGINAL COPY

DEPARTMENT OF HIGHWAYS
 SOUTH HERO
 F. 224-11(1)
 13

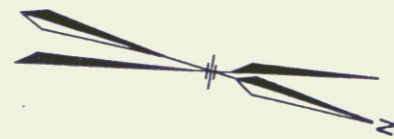
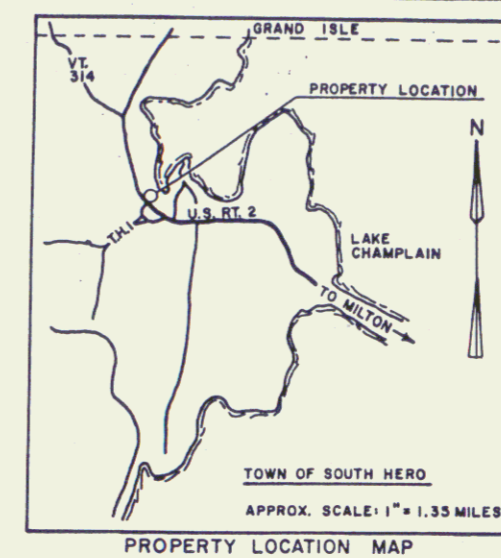
POOR ORIGINAL COPY



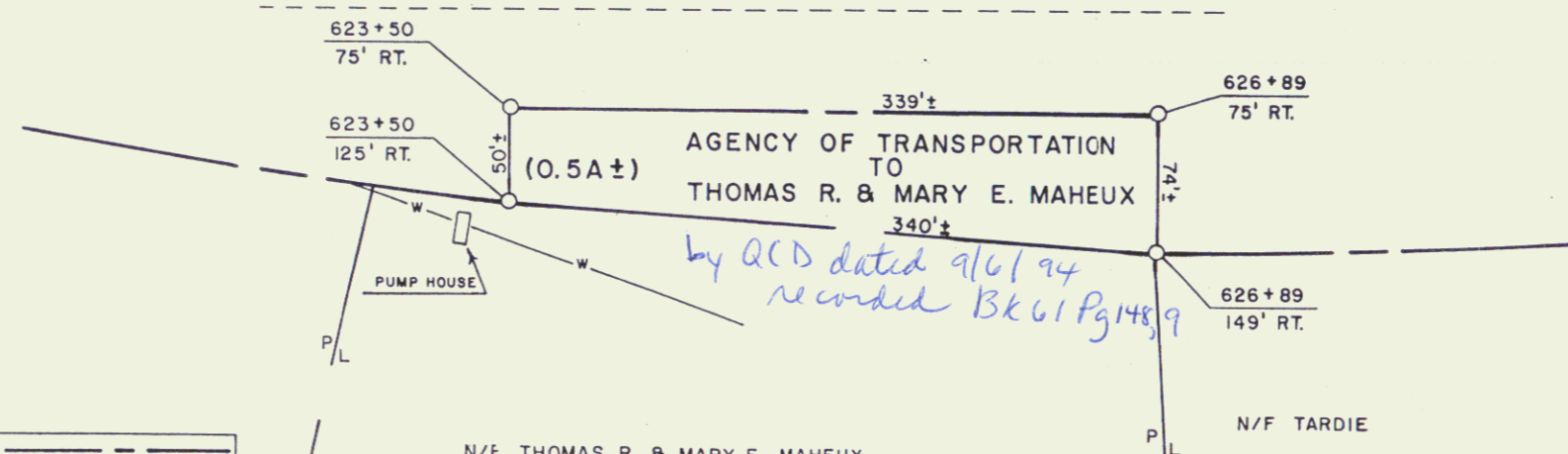
14

4

THIS IS PART OF THE SAME LAND AND PREMISES, ACQUIRED BY THE DEPARTMENT OF HIGHWAYS FROM THE DEPARTMENT OF FORESTS AND PARKS BY EXECUTIVE ORDER DATED OCT. 3, 1966 AND RECORDED IN BOOK 41, PAGES 30 & 31 OF THE SOUTH HERO LAND RECORDS.



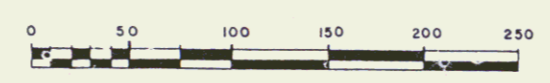
← TO MILTON 623+00 624+00 U.S. RTE. 2 626+00 TO GRAND ISLE →



by QCD dated 9/6/94 recorded Bk 61 Pg 148, 9

THIS IS AN ORIGINAL MYLAR.

LEGEND
EXISTING R.O.W. AFTER CONVEYANCE



REF: SOUTH HERO - E 028-1(4)
SHEET 14 P. 15 OF 23
STATE OF VERMONT
AGENCY OF TRANSPORTATION
TOWN OF SOUTH HERO
APPROX. SCALE 1" = 50' DATE: 7-20-94 DRAWN BY M.R.

14A

5

ACQUIRED FROM THE RUTLAND RAILROAD BY Q.C.D. DATED 3/3/65 RECORDED IN BK. 22 PG. 129-130

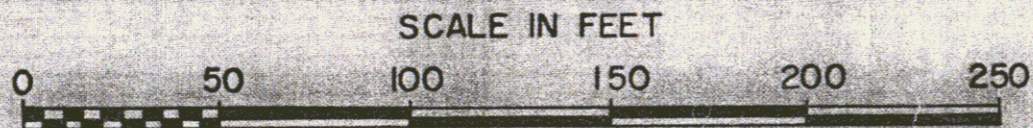
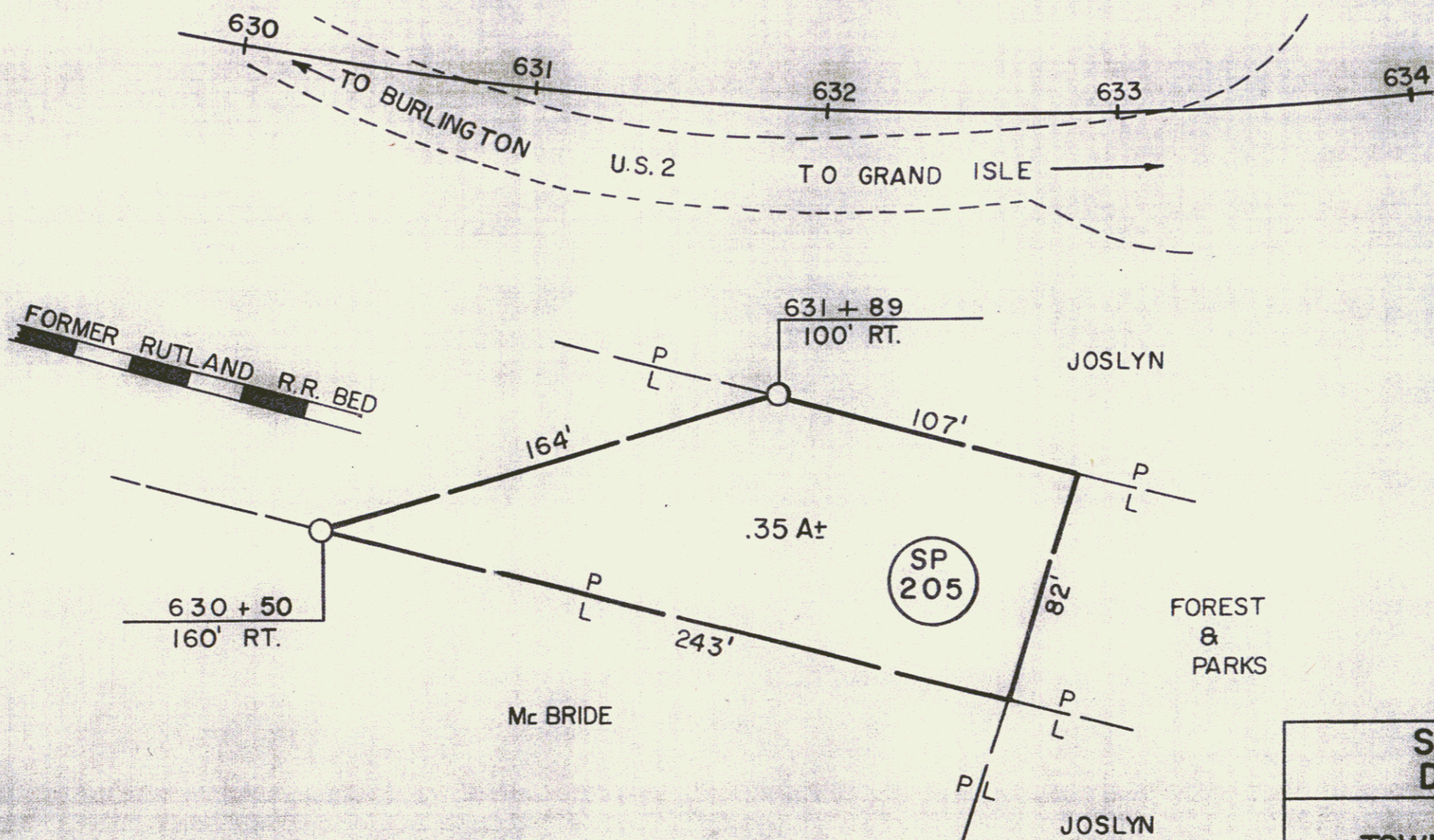
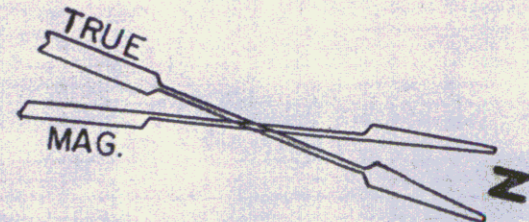
TRANSFERRED TO THE STATE HIGHWAY DEPT. BY EXECUTIVE ORDER DATED 10/3/66

PLAT RECORDED IN MAP 28/22 ON 2/14/75

STATE OF VERMONT TO MYRLE K. McBRIDE BY QCD 1/29/75

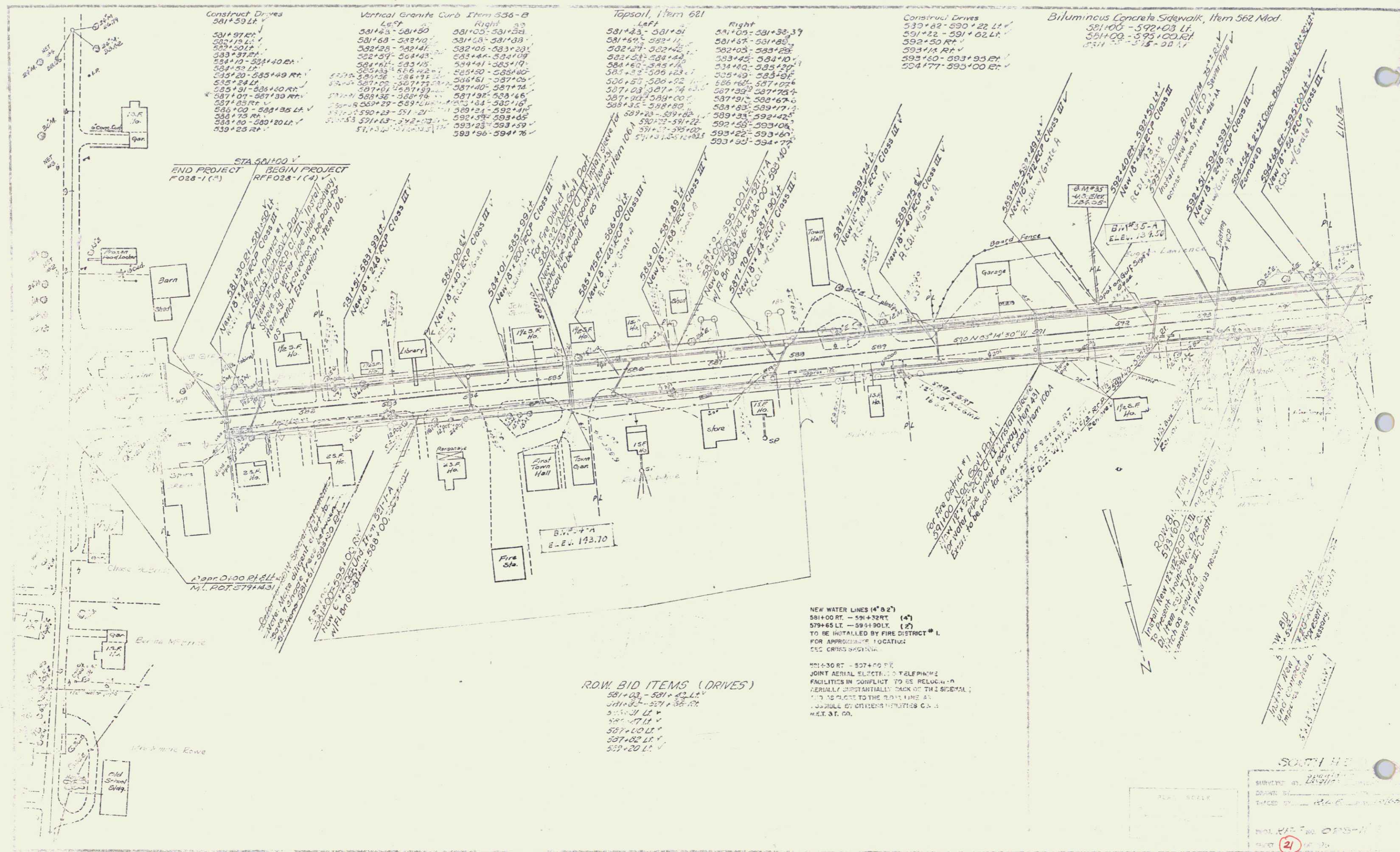
REC'D IN 32/367-59 M.P.

MTD
2/14/75



S-2718

STATE OF VERMONT DEPT. OF HIGHWAYS		
TOWN OF SOUTH HERO 15A		
PROJECT SOUTH HERO	F028-1(4)	7
APPROX. SCALE 1"=50'	DATE 10-3-74	DRAWN BY KDP



Construct Drives
581+59.24 V

581+97 RT
582+19 LT
582+50 RT
583+37 RT
584+19 - 584+40 RT
584+52 LT
585+20 - 585+49 RT
585+24 LT
585+31 - 585+60 RT
587+01 - 587+30 RT
587+35 RT
588+00 - 588+35 LT
588+75 RT
588+80 - 588+20 LT
589+25 RT

Vertical Granite Curb Item 556-B

Left	Right
581+63 - 581+69	581+05 - 581+33
581+69 - 581+98	581+33 - 581+39
582+28 - 582+41	582+06 - 582+29
582+59 - 582+63	583+46 - 584+09
584+61 - 585+15	584+91 - 585+19
585+22 - 585+26	585+20 - 585+26
585+26 - 585+28	586+51 - 587+09
585+28 - 585+29	587+40 - 587+74
585+29 - 585+29	587+92 - 588+66
585+29 - 585+29	588+84 - 588+16
585+29 - 585+29	589+21 - 589+49
585+29 - 585+29	589+59 - 589+65
585+29 - 585+29	589+23 - 589+59
585+29 - 585+29	589+56 - 589+76

Topsoil, Item 681

Left	Right
581+23 - 581+51	581+05 - 581+33
581+51 - 581+51	581+33 - 581+39
582+27 - 582+42	582+06 - 582+29
582+52 - 582+63	583+45 - 584+09
584+60 - 585+15	584+90 - 585+19
585+22 - 585+26	585+20 - 585+26
585+26 - 585+28	586+50 - 587+09
585+28 - 585+29	587+39 - 587+74
585+29 - 585+29	587+92 - 588+66
585+29 - 585+29	588+83 - 589+17
585+29 - 585+29	589+33 - 589+42
585+29 - 585+29	589+22 - 589+65
585+29 - 585+29	589+53 - 589+77

Construct Drives

589+82 - 590+22 LT
591+22 - 591+02 LT
592+50 RT
593+14 RT
593+60 - 593+95 RT
594+77 - 595+00 RT

Biluminous Concrete Sidewalk, Item 562 Mod.

581+06 - 592+03 LT
581+00 - 595+00 LT
591+22 - 595+00 LT

END PROJECT STA. 581+00 V
F028-1 (C)

BEGIN PROJECT STA. 581+00 V
RFF028-1 (4)

ROW BID ITEMS (DRIVES)

581+03 - 581+42 LT
581+42 - 581+81 RT
581+81 LT
581+81 RT
581+81 LT
581+81 RT
581+81 LT
581+81 RT
581+81 LT
581+81 RT

NEW WATER LINES (4" & 2")
581+00 RT - 591+32 RT (4")
579+65 LT - 594+90 LT (2")
TO BE INSTALLED BY FIRE DISTRICT #1.
FOR APPROXIMATE LOCATING
SEE CRISIS REPORT.

581+30 RT - 587+00 RT
JOINT AERIAL ELECTRIC & TELEPHONE
FACILITIES IN CONFLICT TO BE RELOCATED
APPROXIMATELY 10' BACK OF THE SIDEWALK
& TO BE CLOSE TO THE ROW LINE AS
FEASIBLE BY UTILITIES COMPANIES
MET. ST. CO.

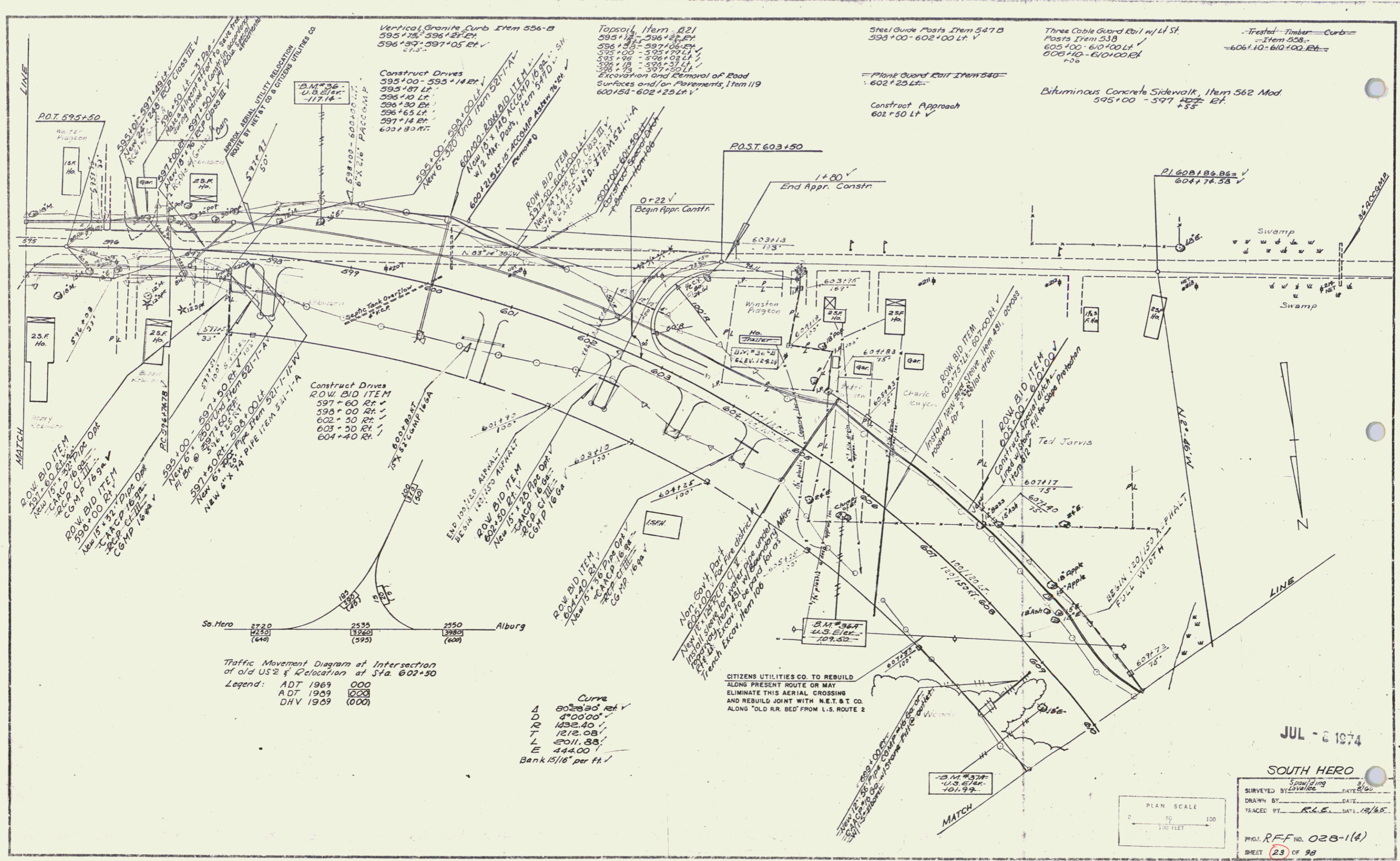
SOUTH

DATE: 11/11/00

SCALE: 1" = 40'

PROJECT: 21

9

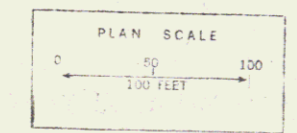


Traffic Movement Diagram of Intersection
of old US 2 & Relocation at Sta. 602+30

Legend: ADT 1969 000
ADT 1969 000
DHV 1969 (000)

Curve
A 30° 28' 30" RCV
D 400.00'
R 1432.40'
T 1212.08'
L 2011.88'
E 444.00'
Bank 1 1/2' per ft.

CITIZENS UTILITIES CO. TO REBUILD
ALONG PRESENT ROUTE OR MAY
ELIMINATE THIS AERIAL CROSSING
AND REBUILD JOINT WITH N.E.T. & T. CO.
ALONG 'OLD RR. BED' FROM L.S. ROUTE 2



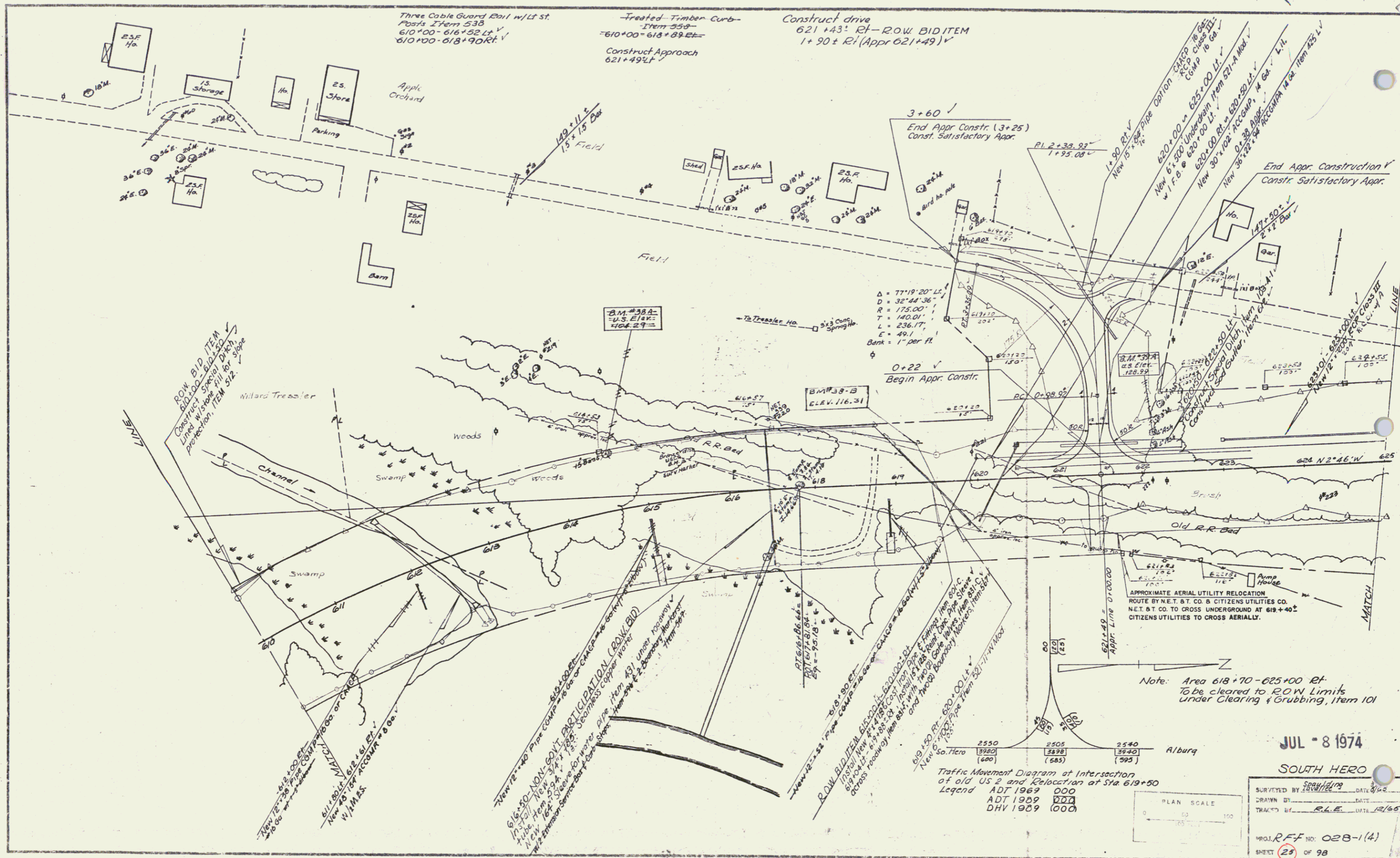
JUL - 6 1974

SOUTH HERO

Surveyed by L. J. Lavelle DATE 8/65
DRAWN BY DATE
TRACED BY R.L.E. DATE 12/65

Proj. R.F.F. No. 028-1(4)
SHEET 23 OF 98

10



Three Cable Guard Rail w/ LT ST.
 Posts Item 538
 610+00 - 616+52 Lt ✓
 610+00 - 618+90 Rt ✓

Treated Timber Curb -
 Item 558
 610+00 - 618+89 Rt ✓
 Construct Approach
 621+49 Lt ✓

Construct drive
 621+43' Rt - ROW BID ITEM
 1+90 ± Rt (Appr 621+49) ✓

3+60 ✓
 End Appr Constr. (3+25)
 Const. Satisfactory Appr.

End Appr. Construction ✓
 Const. Satisfactory Appr.

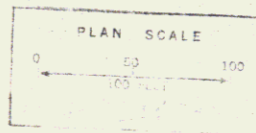
ROW BID ITEM ✓
 Construct
 610+00 - 610+50
 Line w/ slope fill for slope
 protection, Item 512.

Δ = 77°19'20" Lt
 D = 32'44"36"
 R = 175.00'
 T = 140.01'
 L = 236.17'
 C = 49.1'
 Bank = 1" per ft.

APPROXIMATE AERIAL UTILITY RELOCATION
 ROUTE BY N.E.T. & CO. & CITIZENS UTILITIES CO.
 N.E.T. & CO. TO CROSS UNDERGROUND AT 619+40 ✓
 CITIZENS UTILITIES TO CROSS AERIALY.

Note: Area 618+70 - 625+00 Rt
 to be cleared to ROW Limits
 under Clearing & Grubbing, Item 101

Traffic Movement Diagram at Intersection
 of old US 2 and Relocation at Sta 619+50
 Legend
 ADT 1969 000
 ADT 1959 000
 DHV 1959 000



JUL - 8 1974

SOUTH HERO

Surveyed by [Signature] DATE 6/68
 DRAWN BY [Signature] DATE 12/68
 TRACED BY R.H.E. DATE 12/68
 PROJ. R.F.F. NO. 02B-1(4)
 SHEET 25 OF 98
 0-7

Demolition & Disposal of Building
Item 538
No. 1 Sta. 630+75 Lt. V

Three Cable Guard Rail w/Lt. St. Posts
Item 538
625+00 - 627+00 Lt. V
(along old US Rt 2)

Drilling & Blasting of Solid
Rock Subgrade Item 115
625+50 - 634+00 V

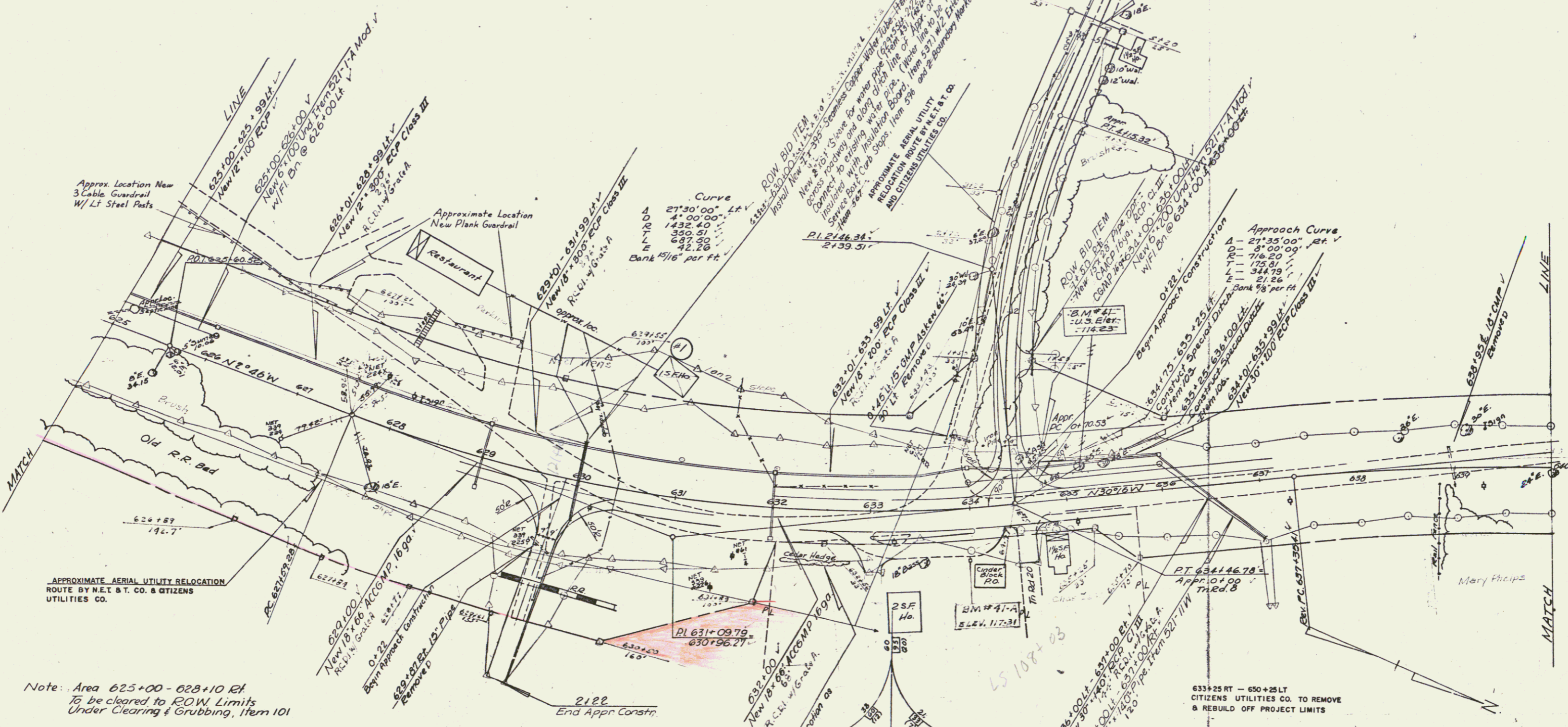
Plank Guard Rail Item 540
626+42 - 627+14 Lt. V
628+30 - 629+00 Lt. V

Construct Drives
632+66 - 633+02 Rt. V
634+01 - 634+35 Rt. V
+150 Rt. Th. Rd. S. ROW-BID ITEM

Vertical Granite Curb Item 556 B
633+03 - 634+03 Rt. Island
C.S. 116

Construct Approach
629+87 Rt. V
634+46.76 Lt. V
634+36 - Rt. V
Removal of Present Superstructure
Item 442
629+87 Rt. V

Bituminous Concrete Surface For
Gutters & Traffic Islands, Item 554, Mod
633+03 - 634+03 Rt. (Island)
16

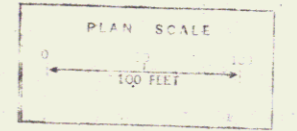


APPROXIMATE AERIAL UTILITY RELOCATION
ROUTE BY N.E.T. & C. & CITIZENS
UTILITIES CO.

Note: Area 625+00 - 628+10 Rt.
To be cleared to ROW Limits
Under Clearing & Grubbing, Item 101

Traffic Movement Diagram at Intersection
of Tr Rd #3 US 2 at Sta. 634+46.78

Legend	ADT 1969	000
	ADT 1989	000
	DHV 1989	(000)



JUL - 8 1974

SOUTH HERO

Surveyed by Spaulding DATE 7/24/74

Drawn by RLE DATE 7/24/74

Traced by RLE DATE 7/24/74

Proj. RFF No. 028-1(4)

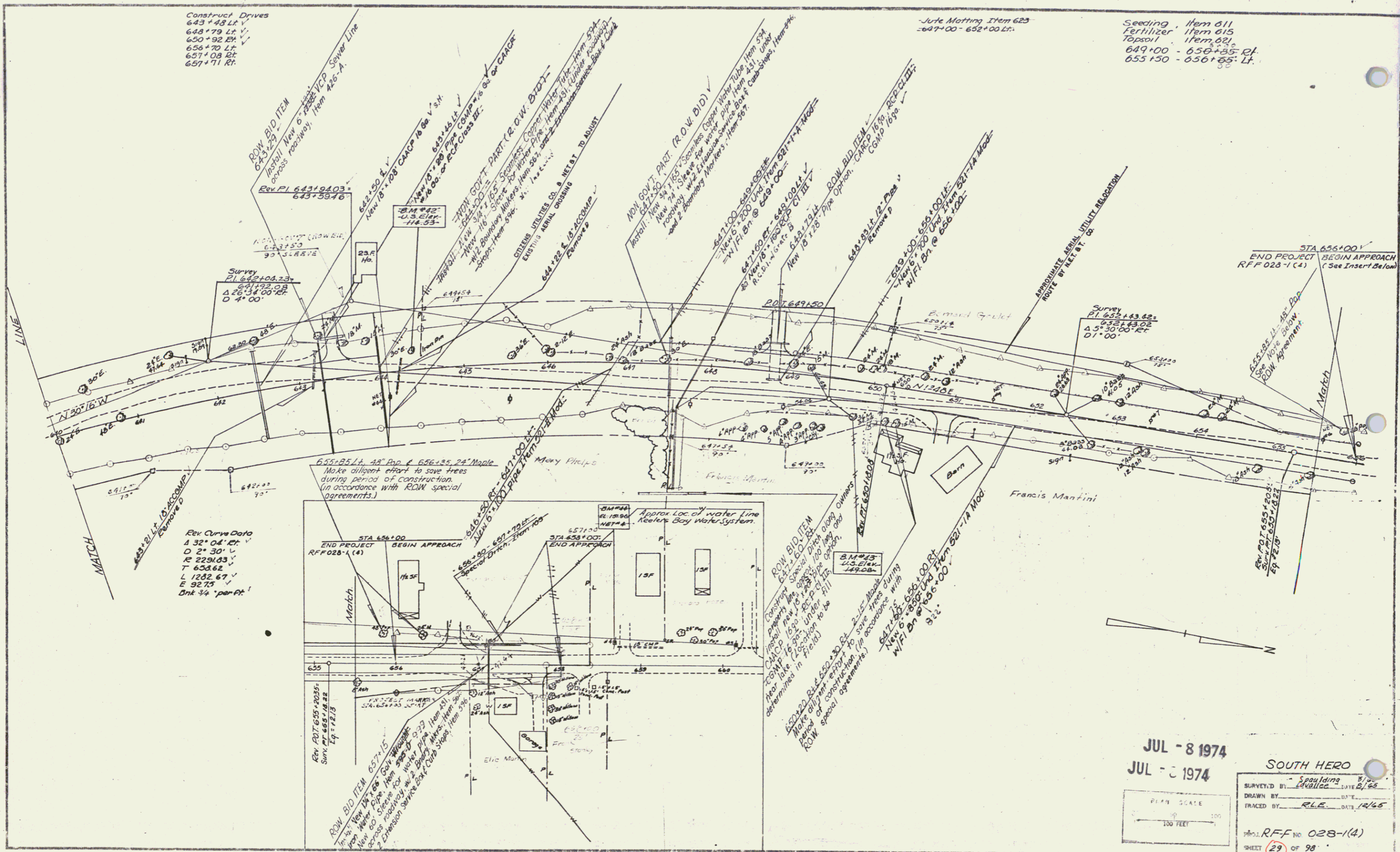
Sheet 27 of 98

12

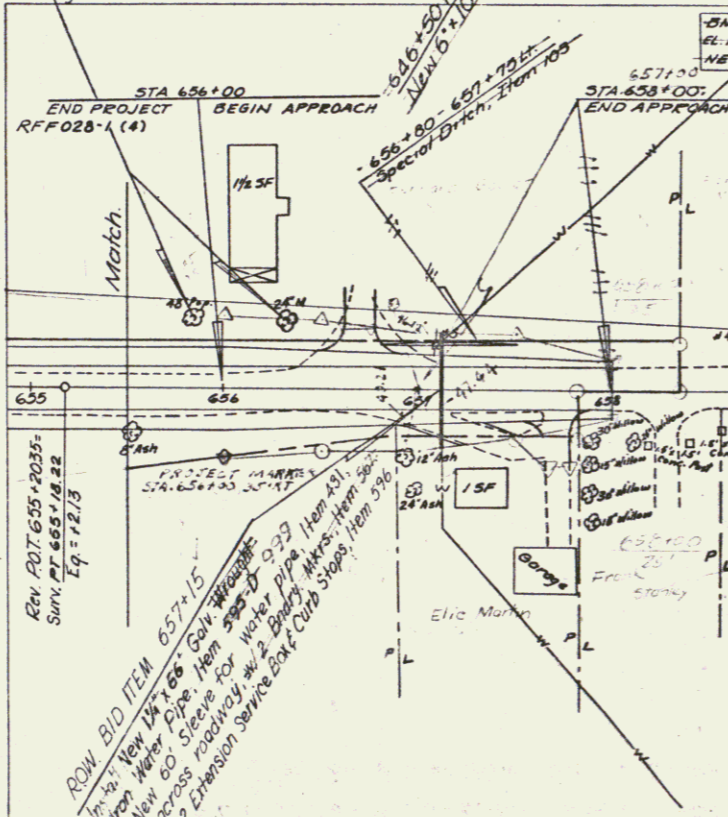
Construct Drives
 643+48 Lt. V
 648+79 Lt. V
 650+92 Rt. V
 656+70 Lt. V
 657+08 Rt. V
 657+71 Rt. V

Jute Matting Item 623
 -647+00 - 652+00 Lt.

Seeding Item 611
 Fertilizer Item 615
 100001 Item 621
 649+00 - 650+85 Rt.
 655+50 - 656+85 Lt.



Rev Curve Data
 Δ 32° 04' Cr.
 D 2° 30' Cr.
 R 229.03
 T 638.62
 L 1282.67
 E 92.75
 Bnk 3/4' per Ft.



JUL - 8 1974
 JUL - 8 1974

SOUTH HERO

SURVEYED BY Spaulding 8/65
 DRAWN BY RLE DATE 1/65
 TRACED BY RLE DATE 1/65

Proj. R.F.F. No 028-1(4)
 SHEET 29 of 98

13