

Demolition & Disposal of Building
Item 538
No. 1 Sta. 630+75 Lt. V

Drilling & Blasting of Solid
Rock Subgrade Item 115
625+50 - 634+00 V

Plank Guard Rail Item 540
626+42 - 627+14 Lt. V
628+30 - 629+00 Lt. V

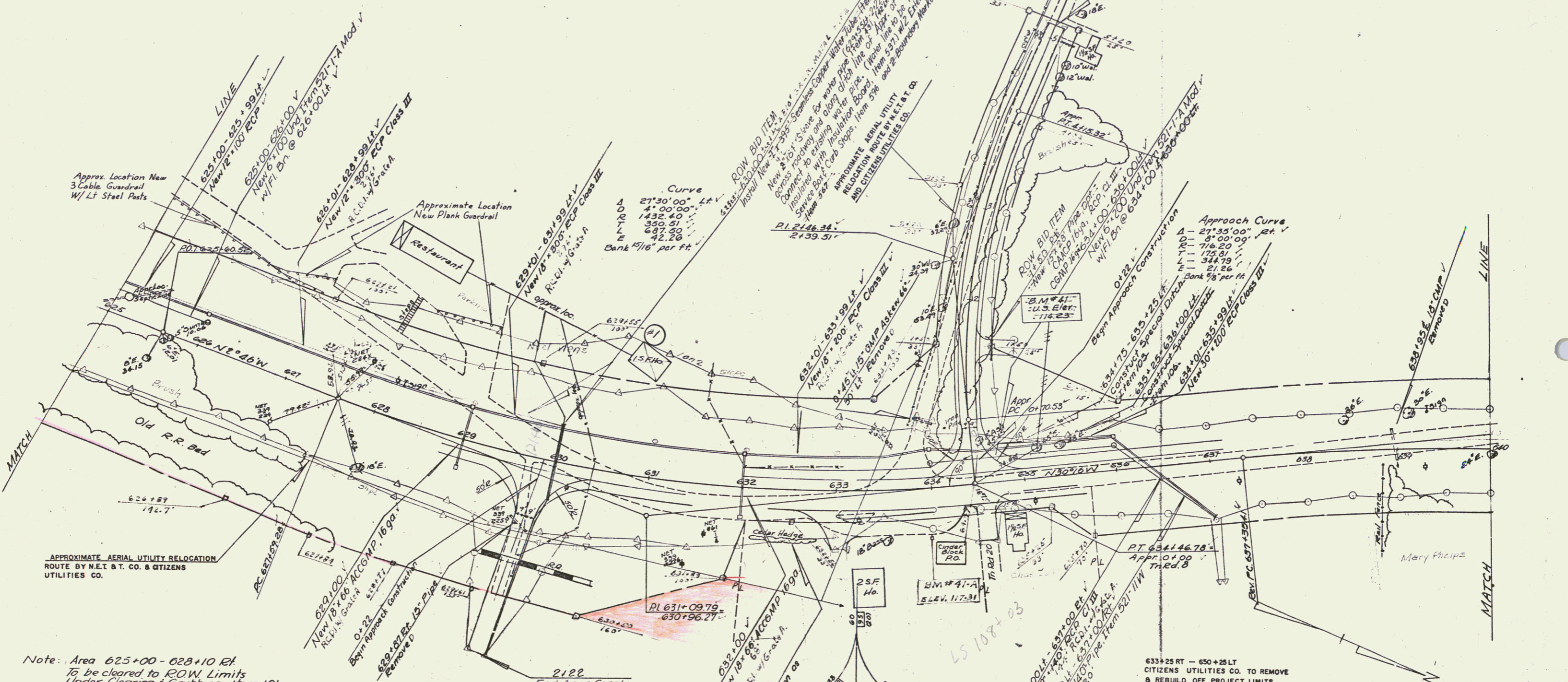
Vertical Granite Curb Item 556 B
633+03 - 634+03 Rt. Island
C.S. 11.6

Bituminous Concrete Surface For
Gutters & Traffic Islands, Item 554, Mod
633+03 - 634+03 Rt. (Island)
1.6

Three Cable Guard Rail w/Lt. St. Posts
Item 538
625+00 - 627+00 Lt. V
(along old US Rt 2)

Construct Drives
632+66 - 633+02 Rt. V
634+01 - 634+35 Rt. V
1.50 Rt. Th. Rd. S. ROW-BID ITEM

Construct Approach
629+87 Rt. V
634+46.70 Lt. V
634+36 - Rt. V
Removal Of Present Superstructure
Item 442
629+87 Rt. V

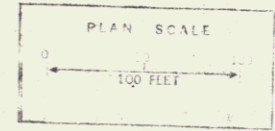


APPROXIMATE AERIAL UTILITY RELOCATION
ROUTE BY N.E.T. & C. & CITIZENS
UTILITIES CO.

Note: Area 625+00 - 628+10 Rt.
To be cleared to ROW Limits
Under Clearing & Grubbing, Item 101

Traffic Movement Diagram at Intersection
of Tr Rd #3 US 2 at Sta. 634+46.70

Legend	ADT 1969	000
	ADT 1969	000
	DHV 1969	(000)



JUL - 8 1974

SOUTH HERO

SURVEYED BY Spaulding DATE 7/24/74

DRAWN BY RLE DATE 7/24/74

TRACED BY RLE DATE 7/24/74

FIG. RFF NO. 028-1(4)

SHEET 27 OF 98

12