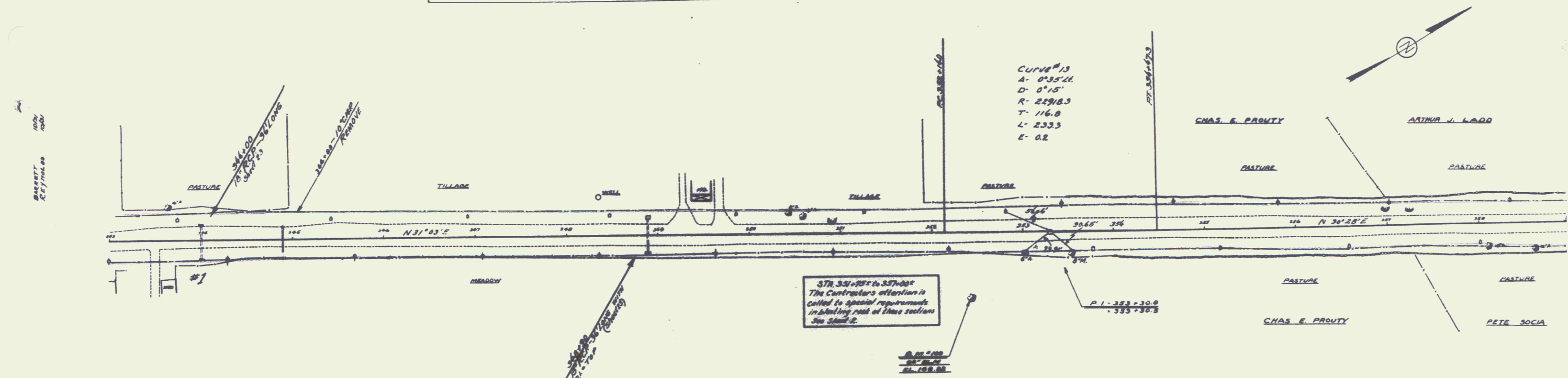
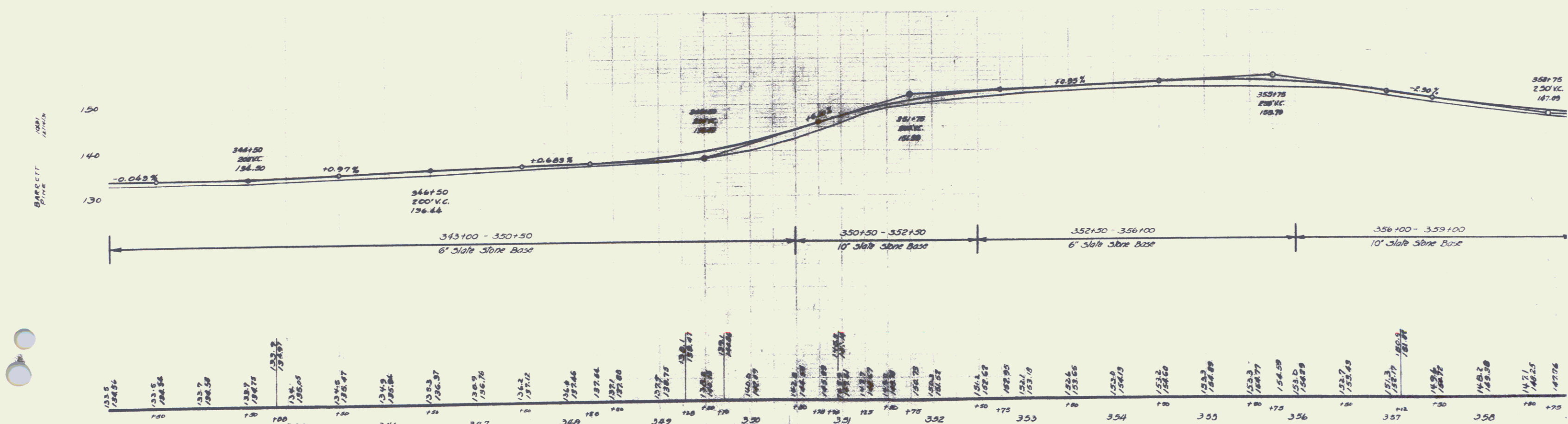


Parcel	Kind of Instrument	Date of Instrument	Grantor	Grantee	Received Grand Total	Remarks
Curv #1	Q.C.D.	8-12-32	C.E. Prouty & wife	Staff V. H.	3.86	8-15-34 Curv. Sta. 344+00

120-M, 1932 15



POOR ORIGINAL COPY



B.M. # 100 SPIKE IN ROOT 24" BLM 6.6 FT. AT STA. 352+63 ELEV. 149.22